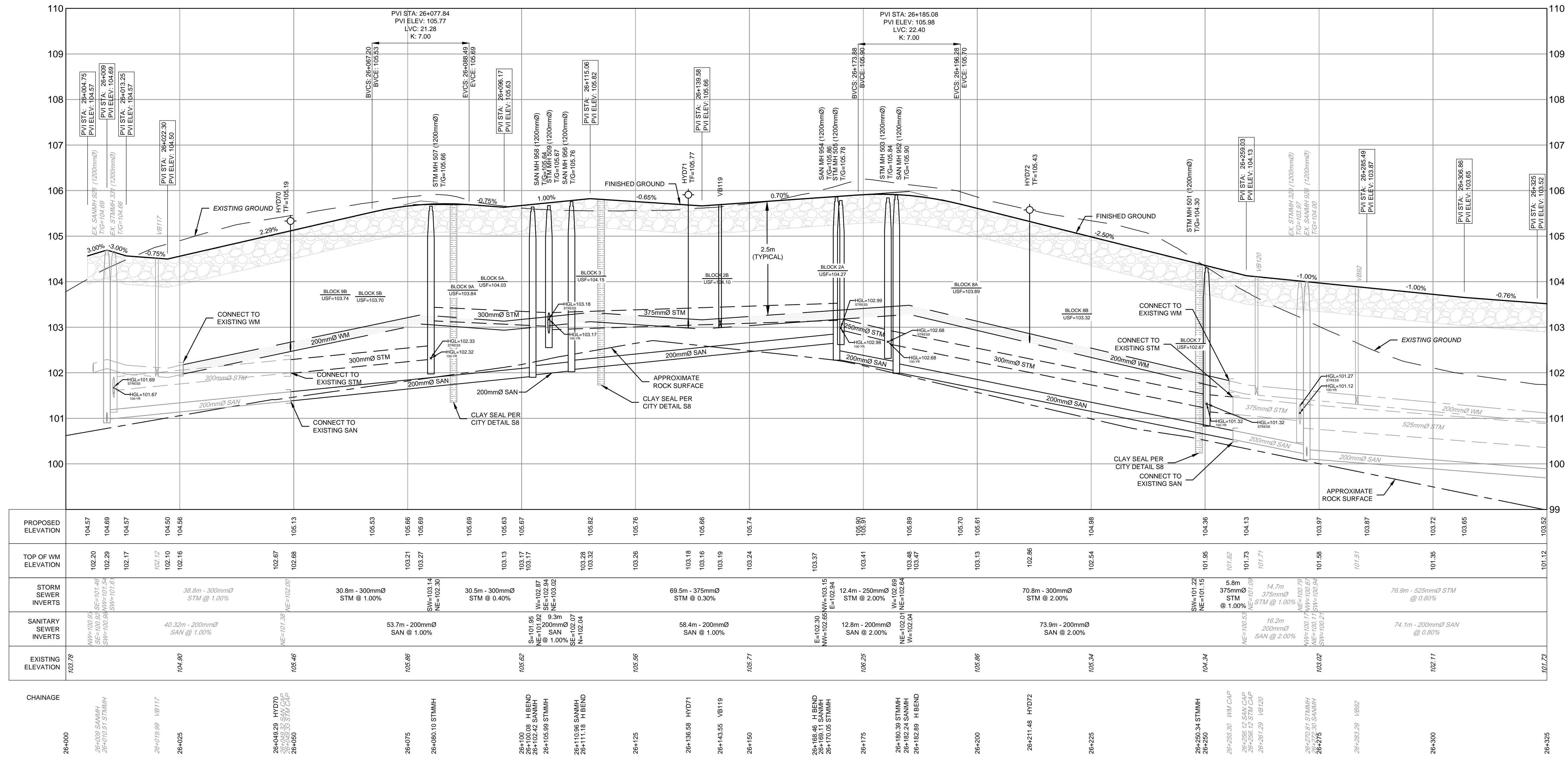


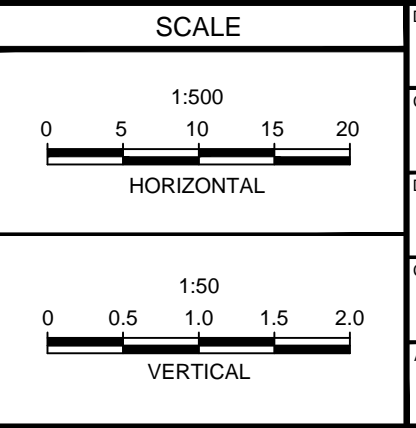
STREET 1



C:\Users\108180-19-PR1\Desktop\108180-19-PR1\108180-19-PR1.dwg, PLOT1, Dec-07, 2019, 8:52:26 AM, outwin

NOTE:
 THE POSITION OF ALL POLE LINES, CONDUITS,
 WATERMANS, SEWERS AND OTHER
 UNDERGROUND AND OVERGROUND UTILITIES AND
 STRUCTURES IS NOT NECESSARILY SHOWN ON
 THE CONTRACT DRAWINGS, AND WHERE SHOWN,
 THE ACCURACY OF THE POSITION OF SUCH
 UTILITIES AND STRUCTURES IS NOT GUARANTEED.
 BEFORE STARTING WORK, DETERMINE THE EXACT
 LOCATION OF ALL SUCH UTILITIES AND
 STRUCTURES AND ASSUME ALL LIABILITY FOR
 DAMAGE TO THEM.

No.	REVISION	DATE	BY
1.	ISSUED FOR APPROVAL	DEC 7/18	MAB



FOR REVIEW ONLY

CHECKED: LRW
 DRAWN: MAB
 CHECKED: JMM
 APPROVED: MAB
 JGR

LICENSED PROFESSIONAL ENGINEER
 L.R. WILSON
 10160905
 PROVINCE OF ONTARIO

LICENSED PROFESSIONAL ENGINEER
 M.A. BISSETT
 PROVINCE OF ONTARIO

NOVATECH
 Engineers, Planners & Landscape Architects
 Suite 200, 240 Michael Cowpland Drive
 Ottawa, Ontario, Canada K2M 1P6
 Telephone: (613) 254-9643
 Facsimile: (613) 254-5867
 Website: www.novatech-eng.com

CITY OF OTTAWA
 FERNBANK CROSSING - PHASE 5
 PLAN AND PROFILE
 STREET 1
 STATION 26+000 TO 26+325

PROJECT No.	108180-19
REV	REV # 1
DRAWING No.	108180-19-PR1