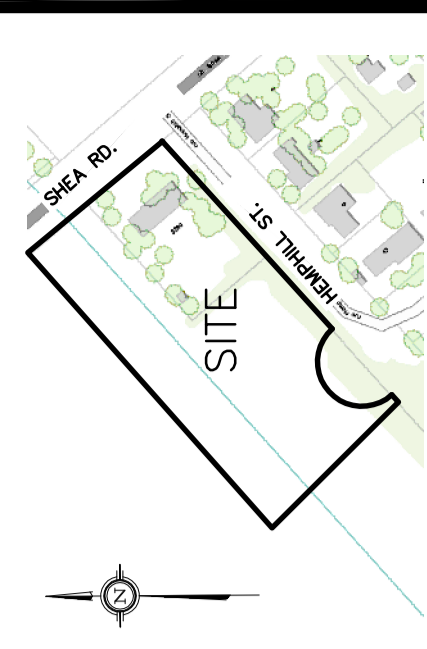


**DRAWING LEGEND**

- CB CATCH BASIN
- MH MANHOLE
- CB/MH CATCH BASIN/MANHOLE
- W/SAN WATER SERVICE / WATERMAIN
- ST STORM SEWER
- FI FIRE HYDRANT
- UP UTILITY POLE
- EXISTING GRADE ELEVATION
- + 93.79 PROPOSED GRADE ELEVATION
- 0.2% EXISTING SLOPE OF GRADE
- 0.5% SLOPE OF GRADE
- SWALE/DITCH (CENTERLINE)
- 1.0% TOP OF SLOPE
- 0.5% BOTTOM OF SLOPE
- PROPERTY LINE
- FFL FIRST FLOOR ELEVATION
- TOP OF FOUNDATION ELEVATION
- BFL BASEMENT FLOOR ELEVATION
- USF UNDERSIDE OF FOOTING ELEVATION

**KEY PLAN**

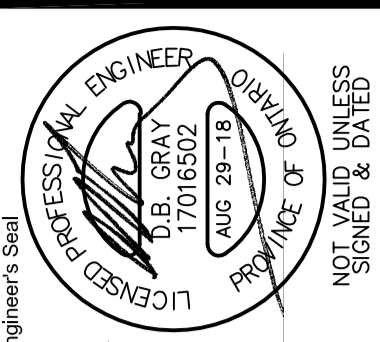


No.	Date	REVISION
2	AUG 29-18	ISSUED FOR APPROVAL
1	DEC 15-17	ISSUED FOR CLIENT REVIEW

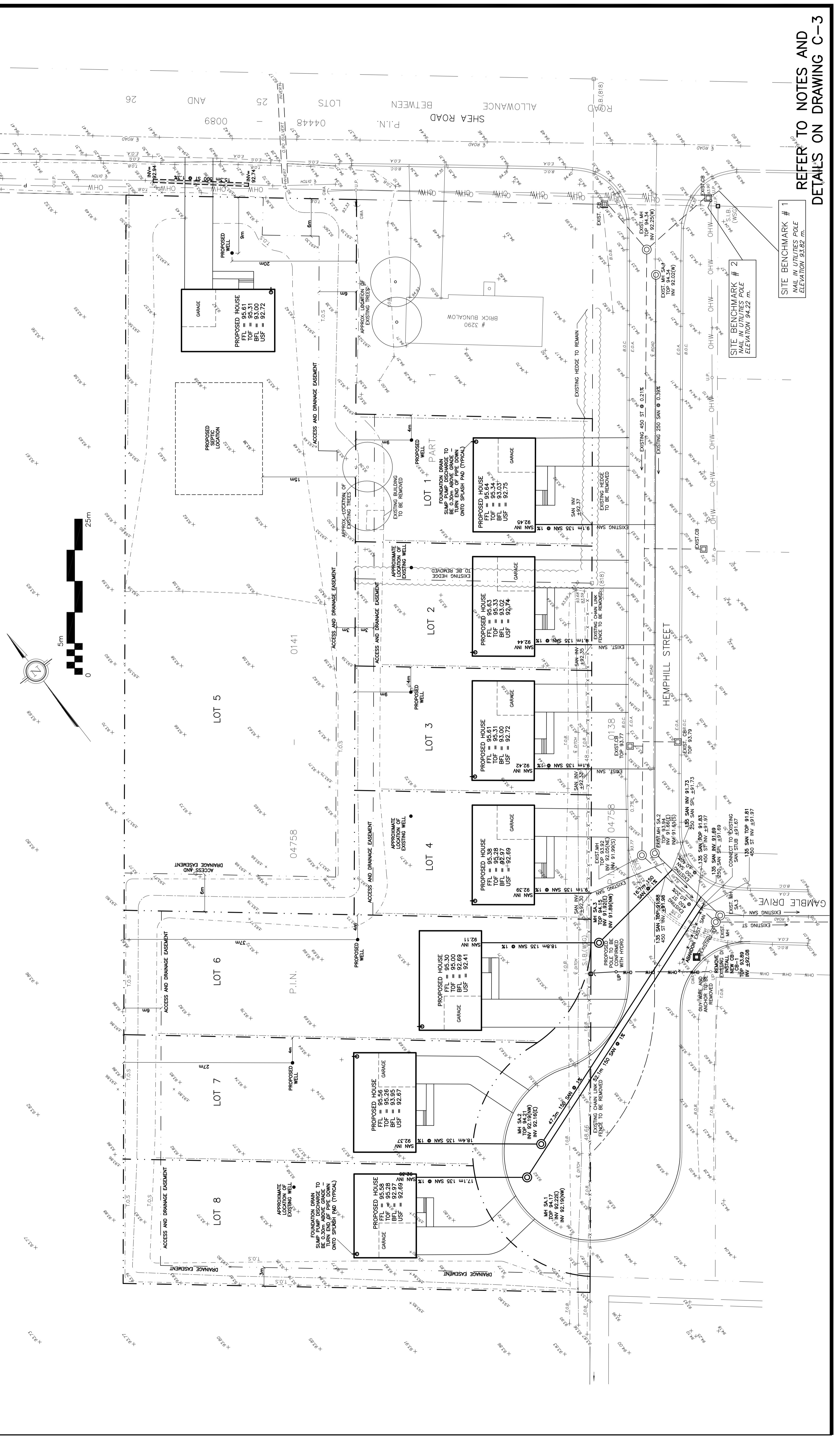
**D. B. GRAY ENGINEERING INC.**  
700 Long Point Circle  
Ottawa, Ontario K1T 4E9  
Tel: 613-425-8044  
dgray@engr.com

**PROPOSED 8-LOT  
RESIDENTIAL DEVELOPMENT  
HEMPHILL STREET/SHEA ROAD  
RICHMOND, ONTARIO**

**SERVICING PLAN**



Drawing No. **C-1**  
of **2**



REFER TO NOTES AND  
DETAILS ON DRAWING C-3

SITE BENCHMARK # 1  
MAIL IN UTILITIES POLE  
ELEVATION 93.82 m.

SITE BENCHMARK # 2  
MAIL IN UTILITIES POLE  
ELEVATION 94.22 m.

