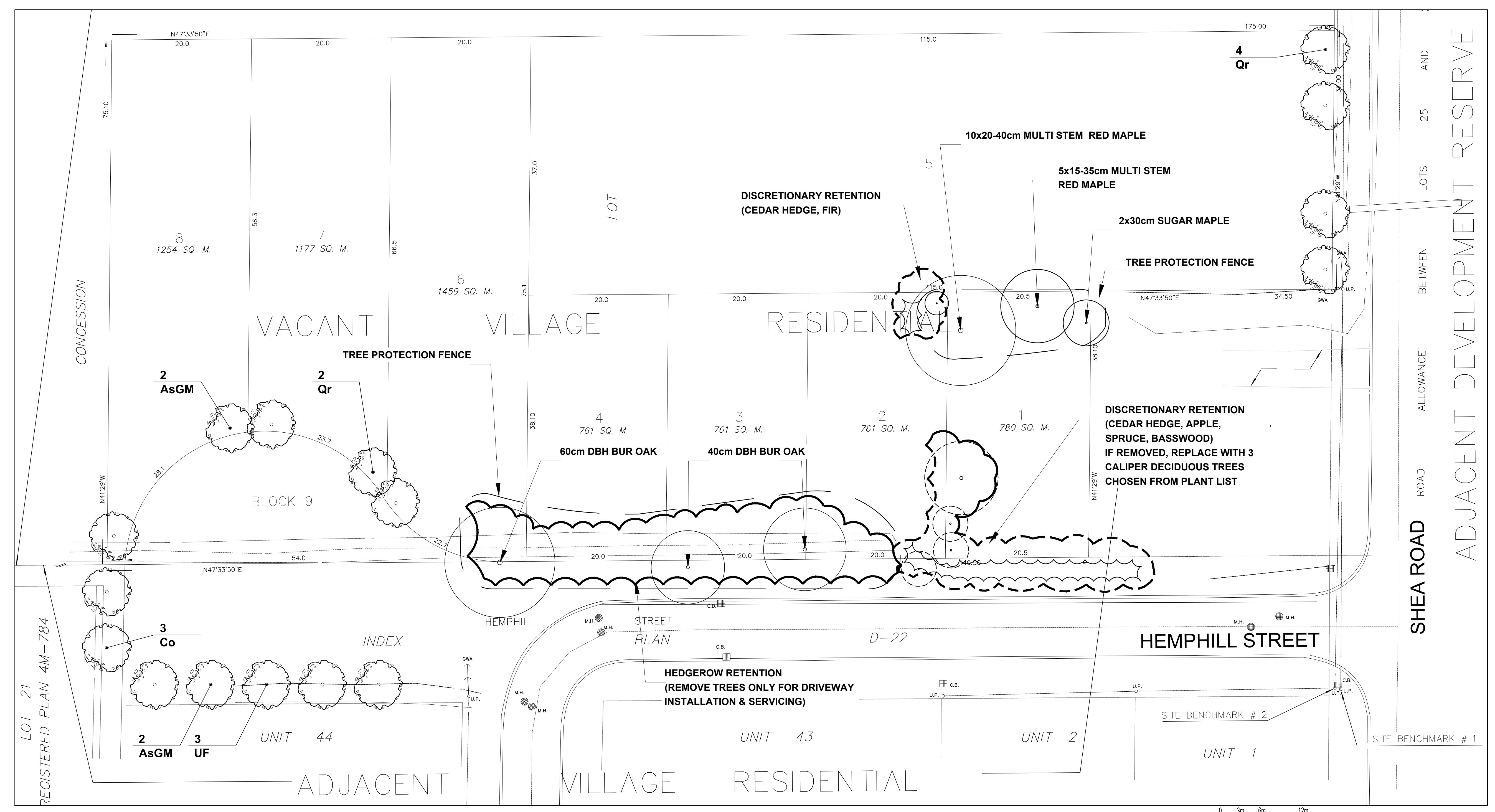
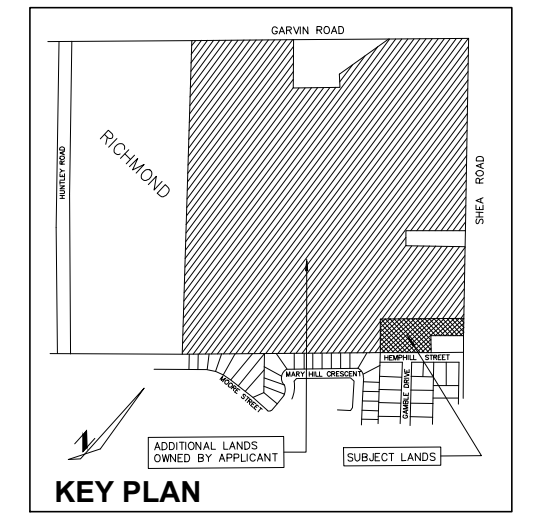
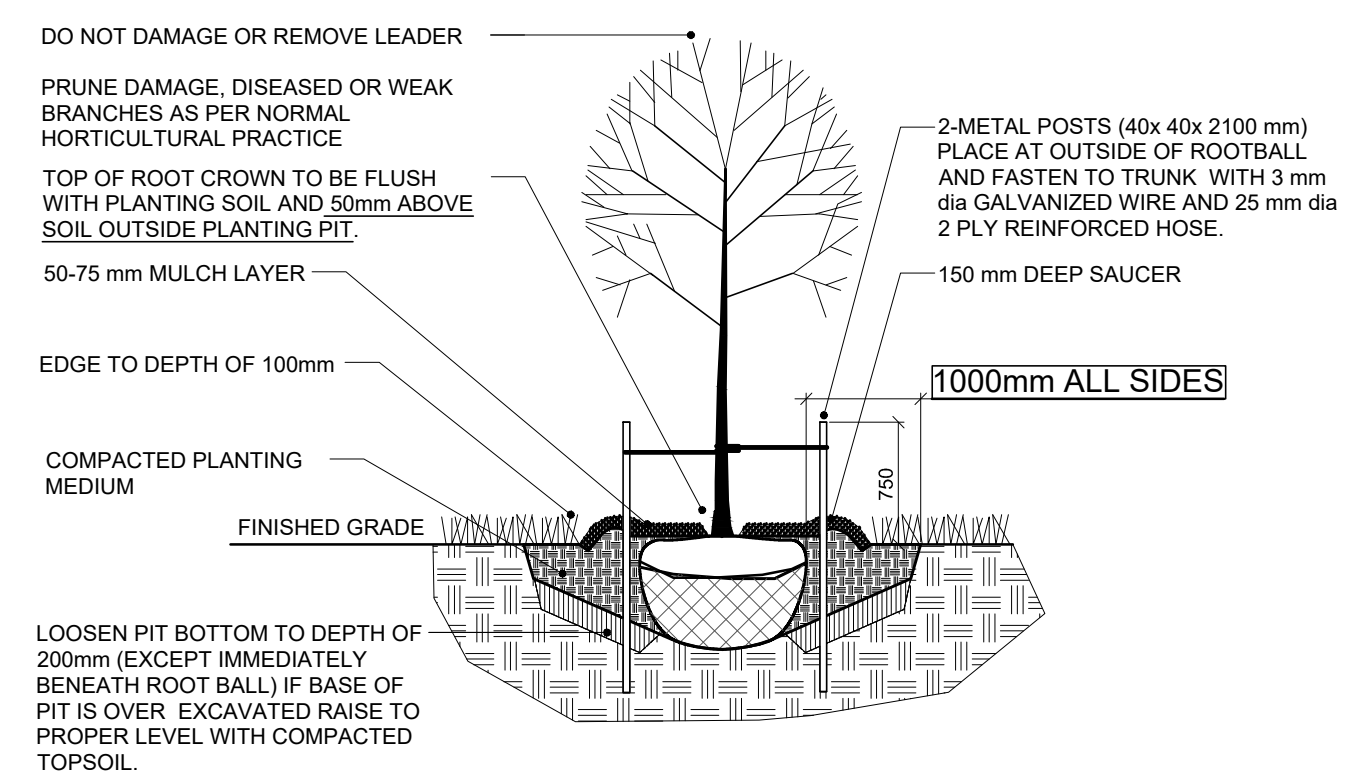


THIS PLAN IS ISSUED FOR SITE PLAN CONTROL ONLY. ADDITIONAL DETAILING AND SPECIFICATIONS ARE REQUIRED PRIOR TO TENDERING AND CONSTRUCTION.



NOTE:
DRAWING TO BE READ IN CONJUNCTION WITH TREE CONSERVATION REPORT. REFER TO TREE CONSERVATION REPORT FOR TREE PROTECTION MEASURES AND DETAILS.

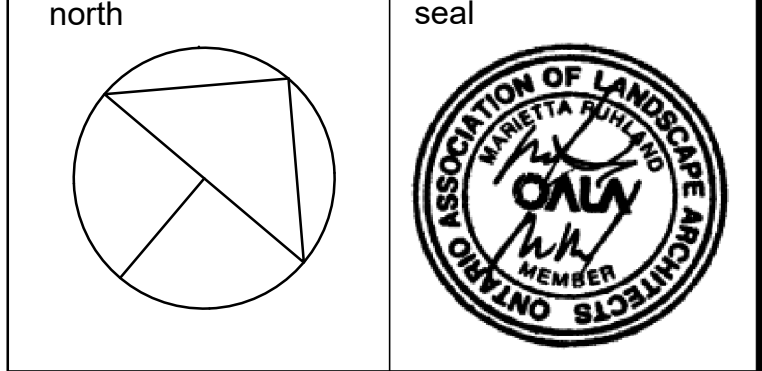


- TREE PLANTING:
- CUT AND REMOVE TOP 1/3 OF BURLAP AND WIRE BASKET FROM ROOTBALL.
 - WATER THOROUGHLY SUBSEQUENT TO PLANTING.
 - WRAP TREE TRUNK AFTER INSPECTION OF TREES BY LANDSCAPE ARCHITECT.
 - PROTECT TREE FROM RODENT DAMAGE.
 - REMOVE TREE RINGS, STAKES AND TRUNK WRAPPING AFTER WARRANTY PERIOD.

B&B / WIRE BASKET TREE PLANTING DETAIL
(FOR CONIFEROUS & DECIDUOUS TREES)

ID	Qty	Botanical Name	Common Name	Scheduled Size	Remarks
TREES					
AsGM	4	Acer saccharum 'Green Mountain'	Green Mountain Sugar Maple	70mm caliper	WB, Staked
Co	2	Celtis occidentalis	Hackberry	70mm caliper	Wire Basket, Staked
Qr	6	Quercus rubra	Northern Red Oak	70mm caliper	Wire Basket, Staked
UF	3	Ulmus 'Frontier'	Frontier Elm	70mm caliper	Wire Basket, Staked

1	Issued for Site Plan Control	Nov. 24/17
no.	issue / revision	date



Ruhland & Associates Ltd
200-1750 Courtwood Crescent, Ottawa, Ontario K3C 2B5
P (613) 234-4741 x 302 F (613) 234-1131 info@rala.ca www.rala.ca

HEMPHILL SUBDIVISION

LANDSCAPE PLAN

scale 1:300	drawn by M. Malkov	designed by R. Ruhland
date November 2017	checked by R. Ruhland	plot date Nov. 24/17
project number 17 - 1542	drawing number L - 01	

Contractor to check and verify all dimensions on the job