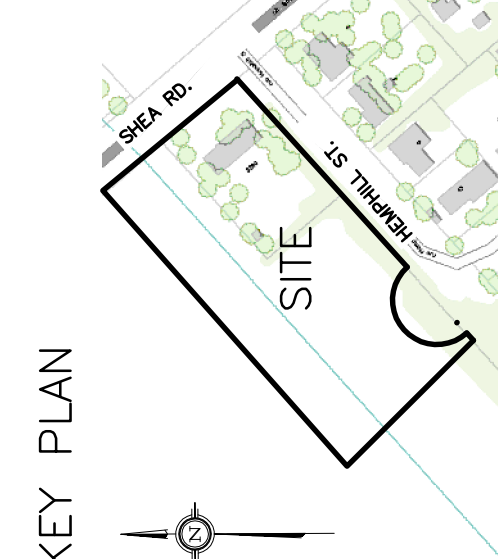


DRAWING LEGEND	
CB	CATCH BASIN
MH	MANHOLE
CB/MH	CATCH BASIN/MANHOLE
W/S	WATER SERVICE / WATERMAIN
S/S	SANITARY SEWER
S	STORM SEWER
FT	FIRE HYDRANT
UP	UTILITY POLE
E	EXISTING GRADE ELEVATION
+P	PROPOSED GRADE ELEVATION
S	SLOPE OF GRADE
C	CENTERLINE OF SWALE/DITCH (CENTERLINE)
L	LINE OF SLOPE
B	BOTTOM OF SLOPE
P	PROPERTY LINE
F	FIRST FLOOR ELEVATION
T	TOP OF FOUNDATION ELEVATION
B	BASMENT FLOOR ELEVATION
U	UNDERSIDE OF FOOTING ELEVATION



No.	Date	REVISION
1	DEC 15-17	ISSUED FOR CLIENT REVIEW
2	AUG 29-18	ISSUED FOR APPROVAL

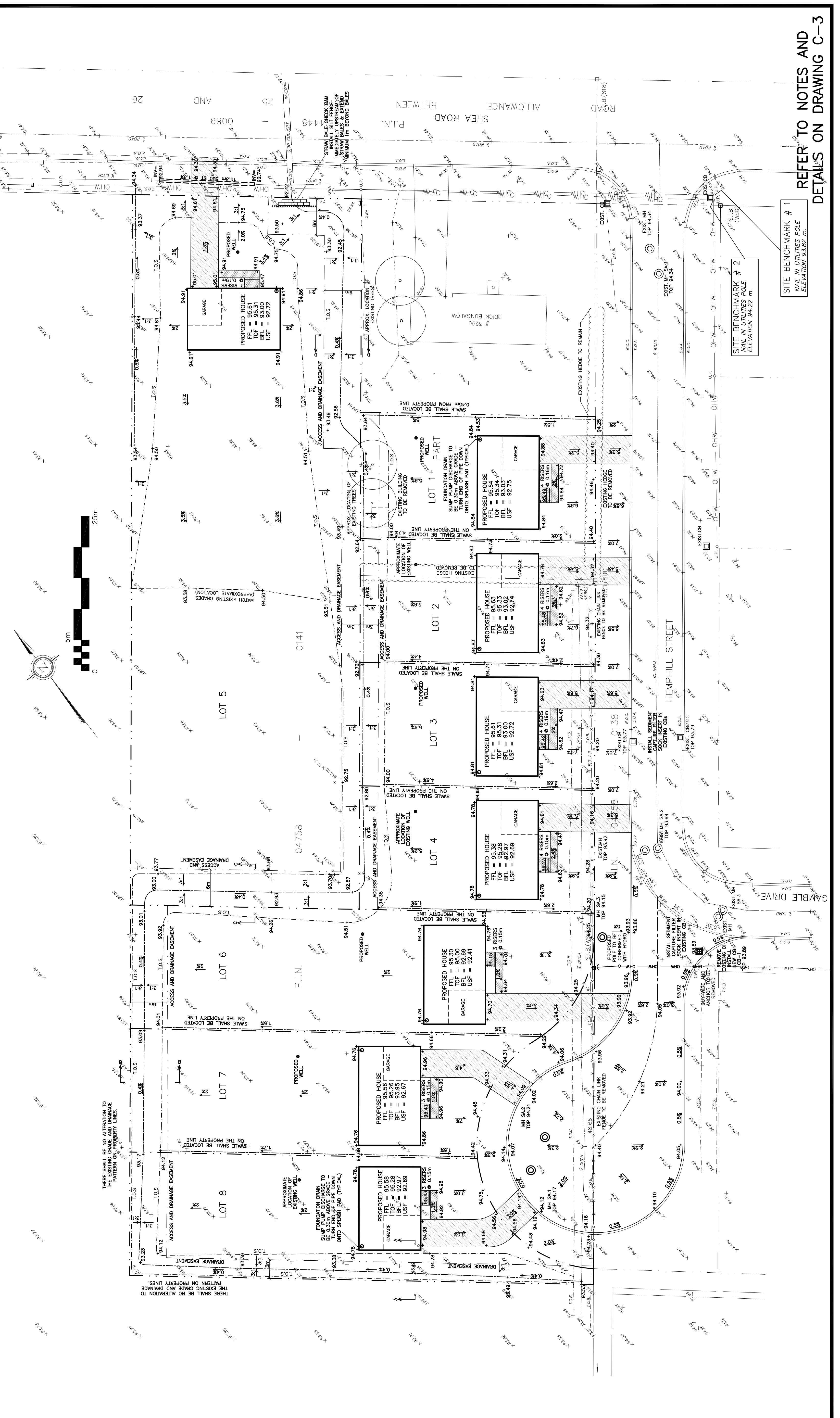
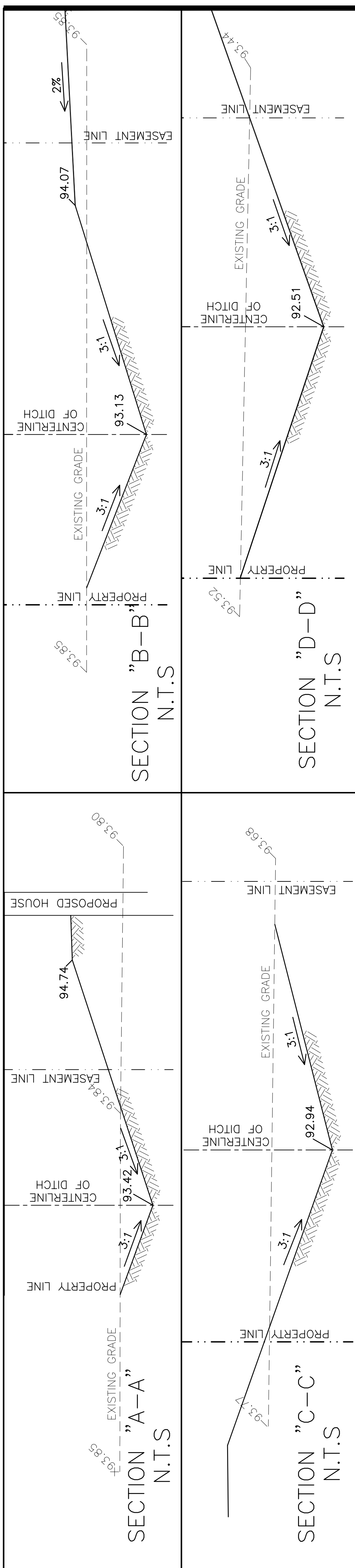
D. B. GRAY ENGINEERING INC.
 700 Long Point Circle
 Ottawa, Ontario K1T 4E9
 Tel: 613-425-8044
 dgray@dbgray.com

Project
PROPOSED 8-LOT RESIDENTIAL DEVELOPMENT
 HEMPHILL STREET/SHEA ROAD
 RICHMOND, ONTARIO

Drawing Title
GRADING PLAN AND EROSION & SEDIMENT CONTROL PLAN

Engineer's Seal

 D.B. GRAY
 17016502
 AUG 29-18
 NOT VALID UNLESS SIGNED & DATED
 Drawing No. **C-2** of **3**



SITE BENCHMARK # 1
 NAIL IN UTILITIES POLE
 ELEVATION 93.82 m.

SITE BENCHMARK # 2
 NAIL IN UTILITIES POLE
 ELEVATION 94.22 m.

REFER TO NOTES AND
 DETAILS ON DRAWING C-3