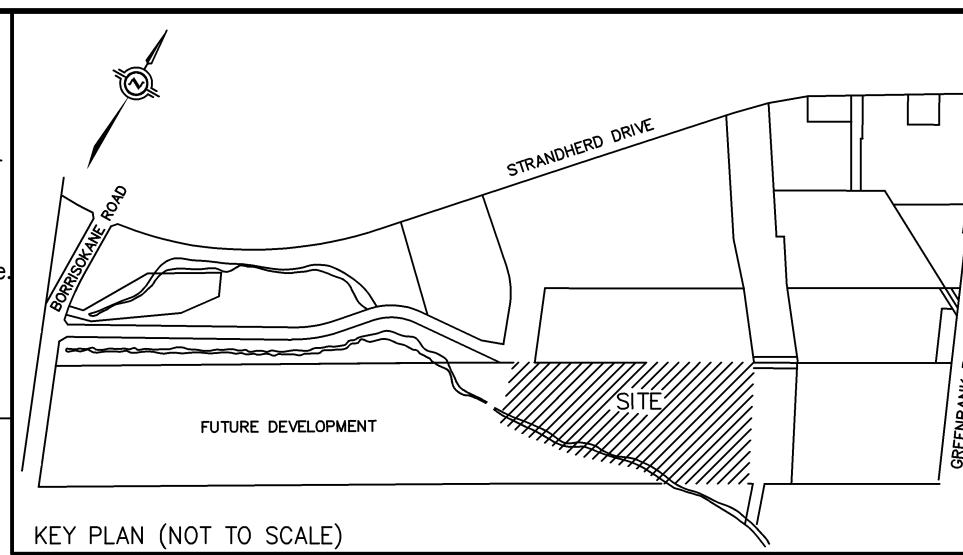


SUBJECT TO THE CONDITIONS, IF ANY, SET FORTH IN OUR LETTER DATEDTHIS DRAFT PLAN IS APPROVED BY THE CITY OF OTTAWA UNDER SECTION 51 OF THE PLANNING ACT THIS DAY OF, 2018.

DON HERWEYER, MCIP RPP, ACTING MANAGER
DEVELOPMENT REVIEW, URBAN SERVICES
PLANNING AND GROWTH MANAGEMENT DEPARTMENT
PLANNING AND INFRASTRUCTURE PORTFOLIO
CITY OF OTTAWA

ADDITIONAL INFORMATION
As required under section 51(17) of the Planning Act R.S.O. 2001

(a)(b)(e)(f)(g)(i) and (l) - As shown on this Plan.
(c) - As shown on this Draft and Key Plan
(d) - Land to be used in accordance with the Schedule of Land Use
(h)(k) - Full Municipal Services
(j) - Offshore Marine Deposits of clay, silty clay and silt, Bedrock Ottawa Formation, limestone



DRAFT PLAN OF SUBDIVISION OF
PART OF LOT 14
CONCESSION 3 (RIDEAU FRONT)
GEOGRAPHIC TOWNSHIP OF NEPEAN
NOW IN THE
CITY OF OTTAWA

SCALE 1 : 1000

METRIC DISTANCES AND/OR COORDINATES SHOWN ON THIS PLAN ARE IN METRES AND CAN BE CONVERTED TO FEET BY DIVIDING BY 0.3048.

Schedule of Land Use

Land Use	Lots/Blocks	Units	Area
Singles Detached	4 to 9, 12 to 17, 19, 21 and 27 to 29		3.75 ha.
Rear Lane Townhome	10, 11, 25 and 26		0.42 ha.
Park	2		0.46 ha.
SWM Block	18		0.04 ha.
Streets	1 to 7		2.43 ha.
Lanes	1		0.09 ha.
Reserves	23 and 24		0.02 ha.
Future Street	CHAPMAN MILLS DRIVE		0.94 ha.
Vista/Walkway	20		0.01 ha.
Natural Heritage System	22		1.73 ha.
Future Development	1		1.28 ha.
Future Park	3		0.21 ha.
Total			11.38 ha.

OWNER'S CERTIFICATE

BARRHAVEN CONSERVANCY EAST INC., BEING THE REGISTERED OWNER OF THE SUBJECT LANDS HEREBY AUTHORIZES J. D. BARNES LIMITED TO PREPARE AND SUBMIT THIS DRAFT PLAN OF SUBDIVISION FOR APPROVAL.

DATE: _____ FRANK CAIRO
PRESIDENT
(I HAVE THE AUTHORITY TO BIND THE CORPORATION)

SURVEYOR'S CERTIFICATE

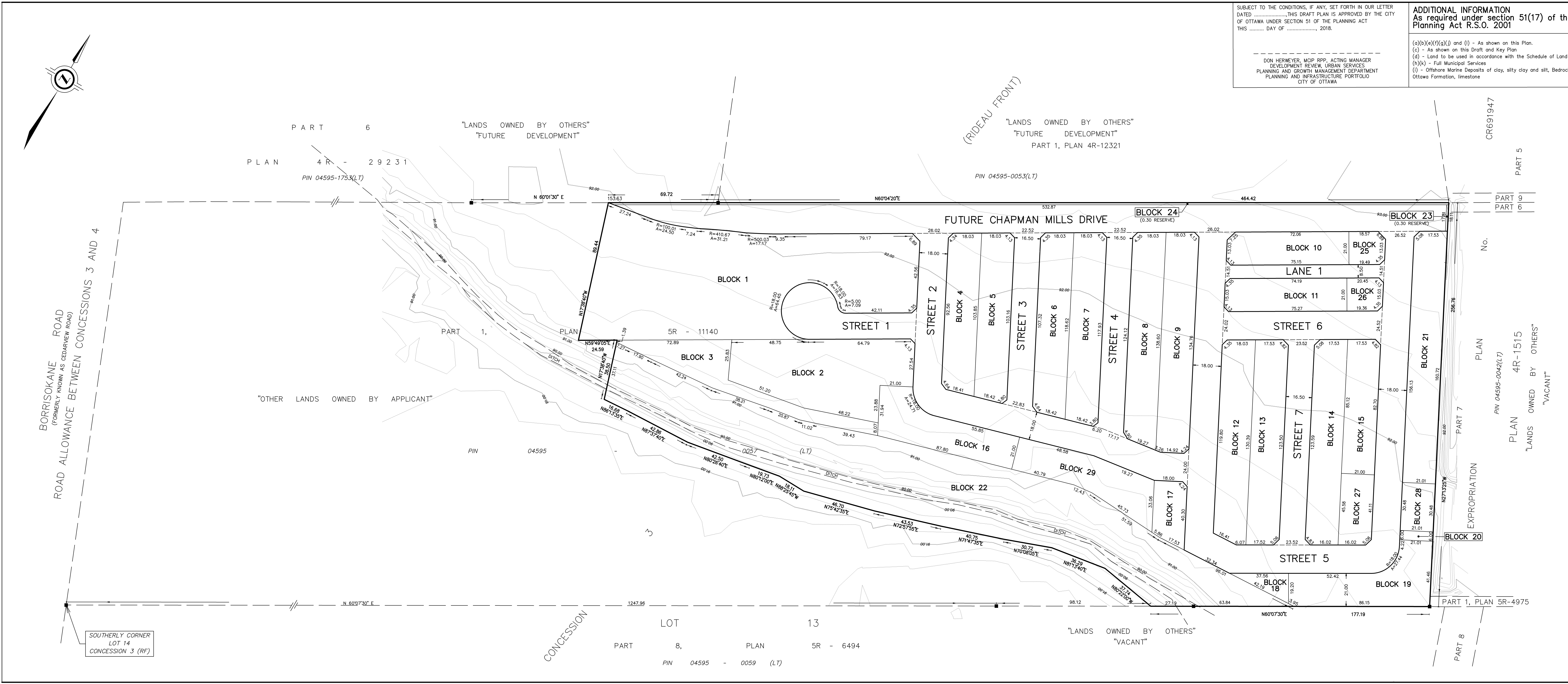
I HEREBY CERTIFY THAT THE BOUNDARIES OF THE LAND TO BE SUBDIVIDED ARE CORRECTLY SHOWN.

DATE: _____ C. M. FOX
ONTARIO LAND SURVEYOR

NOTE: BOUNDARY INFORMATION IS COMPILED FROM REFERENCE PLANS WHICH HAS NOT BEEN VERIFIED BY FIELD SURVEY.

J.D.BARNES SURVEYING MAPPING G.I.S. LIMITED
LAND INFORMATION SPECIALISTS
2430 DON REID DRIVE, SUITE 204, OTTAWA, ON K1H 1E1
T: (613) 731-7244 F: (613) 731-8955 www.jdbarnes.com

DRAWN BY: CE/RA CHECKED BY: CF REFERENCE NO.: 16-10-127-00
FILE: G:\16-10-127\00\Drawings\16-10-127-00DraftPlanA.dgn DATED: SEPT 10, 2018
PLOTTED: 9/10/2018



SOUTHERLY CORNER
LOT 14
CONCESSION 3 (RF)

CONCESSION 8
LOT 13
PART 8, PLAN 5R - 6494
PIN 04595 - 0059 (LT)

CR691947
PART 5
PART 6
PART 7
PART 8

No.
PLAN 4R-1515
"LANDS OWNED BY OTHERS"
"VACANT"

PART 1, PLAN 5R-4975