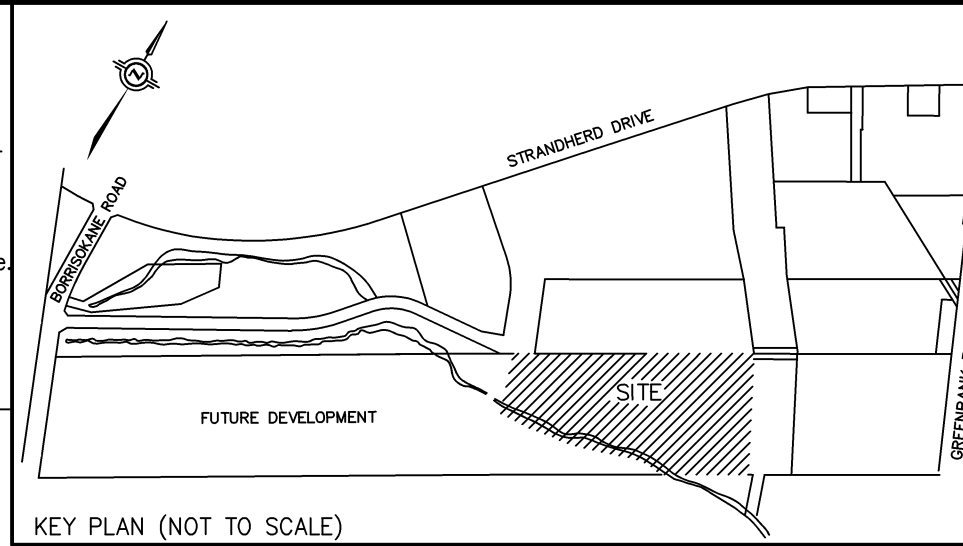


SUBJECT TO THE CONDITIONS, IF ANY, SET FORTH IN OUR LETTER DATEDTHIS DRAFT PLAN IS APPROVED BY THE CITY OF OTTAWA UNDER SECTION 51 OF THE PLANNING ACT THIS DAY OF, 2018.

DON HERWEYER, MCIP RPP, ACTING MANAGER
DEVELOPMENT REVIEW, URBAN SERVICES
PLANNING AND GROWTH MANAGEMENT DEPARTMENT
PLANNING AND INFRASTRUCTURE PORTFOLIO
CITY OF OTTAWA

ADDITIONAL INFORMATION
As required under section 51(17) of the Planning Act R.S.O. 2001

(a)(b)(e)(f)(g)(i) and (l) - As shown on this Plan.
(c) - As shown on this Draft and Key Plan
(d) - Land to be used in accordance with the Schedule of Land Use
(h)(k) - Full Municipal Services
(j) - Offshore Marine Deposits of clay, silty clay and silt, Bedrock Ottawa Formation, limestone



DRAFT PLAN OF SUBDIVISION OF
PART OF LOT 14
CONCESSION 3 (RIDEAU FRONT)
GEOGRAPHIC TOWNSHIP OF NEPEAN
NOW IN THE
CITY OF OTTAWA

SCALE 1 : 1000

METRIC DISTANCES AND/OR COORDINATES SHOWN ON THIS PLAN ARE IN METRES AND CAN BE CONVERTED TO FEET BY DIVIDING BY 0.3048.

Schedule of Land Use			
Land Use	Lots/Blocks	Units	Area
Singles Detached	5 to 10, 13 to 16, 18, 19, 21, 23, 29 and 30		3.74 ha.
Rear Lane Townhome	1 to 4, 11, 12, 27 and 28		1.14 ha.
Park	17		0.67 ha.
SWM Block	20		0.04 ha.
Streets	1 to 8		2.64 ha.
Lanes	1 to 3		0.24 ha.
Reserves	25 and 26		0.02 ha.
Future Street	CHAPMAN MILLS DRIVE		1.15 ha.
Vista/Walkway	22		0.01 ha.
Natural Heritage System	24		1.73 ha.
Total			11.38 ha.

OWNER'S CERTIFICATE
BARRHAVEN CONSERVANCY EAST INC., BEING THE REGISTERED OWNER OF THE SUBJECT LANDS HEREBY AUTHORIZES J. D. BARNES LIMITED TO PREPARE AND SUBMIT THIS DRAFT PLAN OF SUBDIVISION FOR APPROVAL.

DATE FRANK CAIRO
PRESIDENT
(I HAVE THE AUTHORITY TO BIND THE CORPORATION)

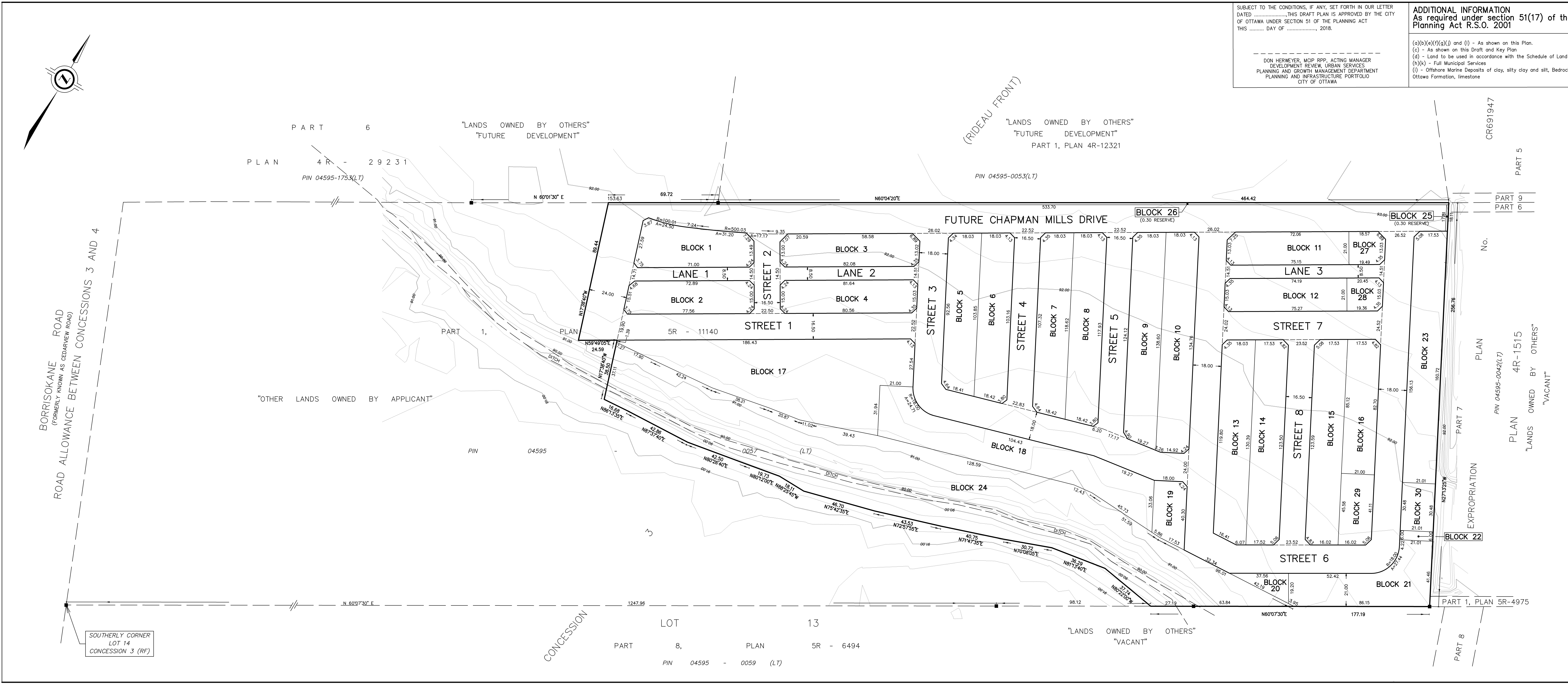
SURVEYOR'S CERTIFICATE
I HEREBY CERTIFY THAT THE BOUNDARIES OF THE LAND TO BE SUBDIVIDED ARE CORRECTLY SHOWN.

DATE C. M. FOX
ONTARIO LAND SURVEYOR

NOTE BOUNDARY INFORMATION IS COMPILED FROM REFERENCE PLANS WHICH HAS NOT BEEN VERIFIED BY FIELD SURVEY.

J.D. BARNES LIMITED SURVEYING MAPPING GIS
LAND INFORMATION SPECIALISTS
2430 DON REID DRIVE, SUITE 204, OTTAWA, ON K1H 1E1
T: (613) 731-7244 F: (613) 731-8955 www.jdbarnes.com

DRAWN BY: CE/RA CHECKED BY: CF REFERENCE NO.: 16-10-127-00
FILE: G:\16-10-127\00\Drawings\16-10-127-00DraftPlanA.dgn DATED: AUG 30, 2018
PLOTTED: 8/30/2018



SOUTHERLY CORNER
LOT 14
CONCESSION 3 (RF)

CONCESSION PART 8, LOT 13, PLAN 5R - 6494, PIN 04595 - 0059 (LT)

BORRISOKANE ROAD
(FORMERLY KNOWN AS CEDARVIEW ROAD)
ROAD ALLOWANCE BETWEEN CONCESSIONS 3 AND 4

No. PLAN 4R-1515
"LANDS OWNED BY OTHERS" "VACANT"

EXPROPRIATION PLAN 5R-4975

PART 6 "LANDS OWNED BY OTHERS" "FUTURE DEVELOPMENT"
PLAN 4R - 29231 PIN 04595-1753(LT)
PART 9 "LANDS OWNED BY OTHERS" "FUTURE DEVELOPMENT"
PART 1, PLAN 4R-12321 PIN 04595-0053(LT)

PART 1, "OTHER LANDS OWNED BY APPLICANT"
PIN 04595

PART 8, "LANDS OWNED BY OTHERS" "VACANT"
PART 1, PLAN 5R-4975