




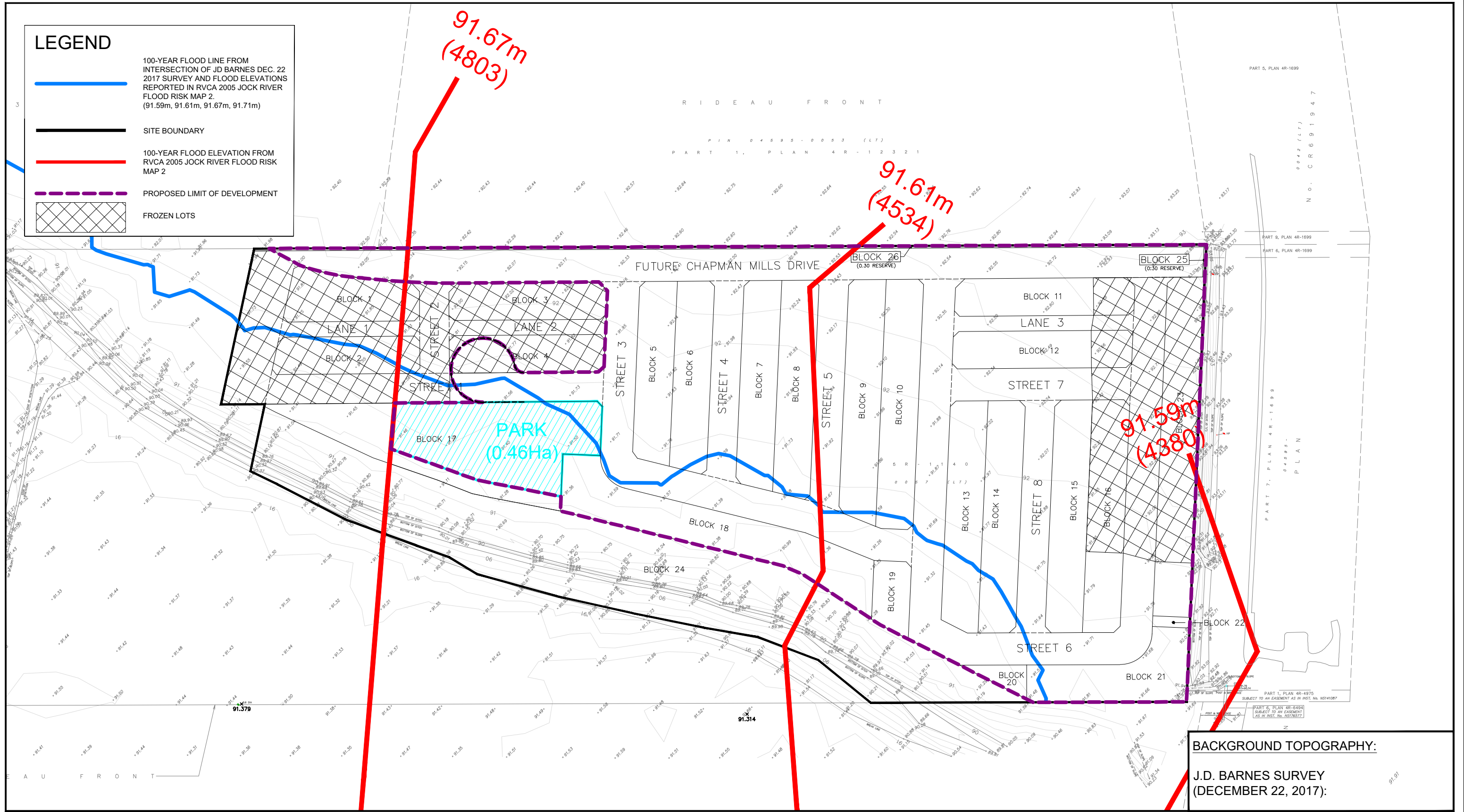


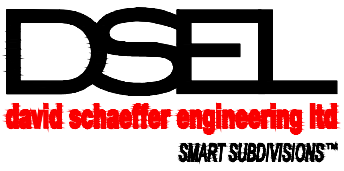
LEGEND

-  100-YEAR FLOOD LINE FROM INTERSECTION OF JD BARNES DEC. 22 2017 SURVEY AND FLOOD ELEVATIONS REPORTED IN RVCA 2005 JOCK RIVER FLOOD RISK MAP 2 (91.59m, 91.61m, 91.67m, 91.71m)
-  SITE BOUNDARY
-  100-YEAR FLOOD ELEVATION FROM RVCA 2005 JOCK RIVER FLOOD RISK MAP 2
-  PROPOSED LIMIT OF DEVELOPMENT
-  FROZEN LOTS



BACKGROUND TOPOGRAPHY:

J.D. BARNES SURVEY
(DECEMBER 22, 2017):



120 Iber Road, Unit 103
Stittsville, ON K2S 1E9
TEL: (613) 836-0856
FAX: (613) 836-7183
www.DSEL.ca

**BARRHAVEN CONSERVANCY
FLOODPLAIN LIMIT BASED ON
RVCA JOCK RIVER 1:100 FLOOD RISK ELEVATIONS**

PROJECT No.:	16-891
SCALE:	1:2000
DATE:	AUGUST 30, 2018
FIGURE:	2