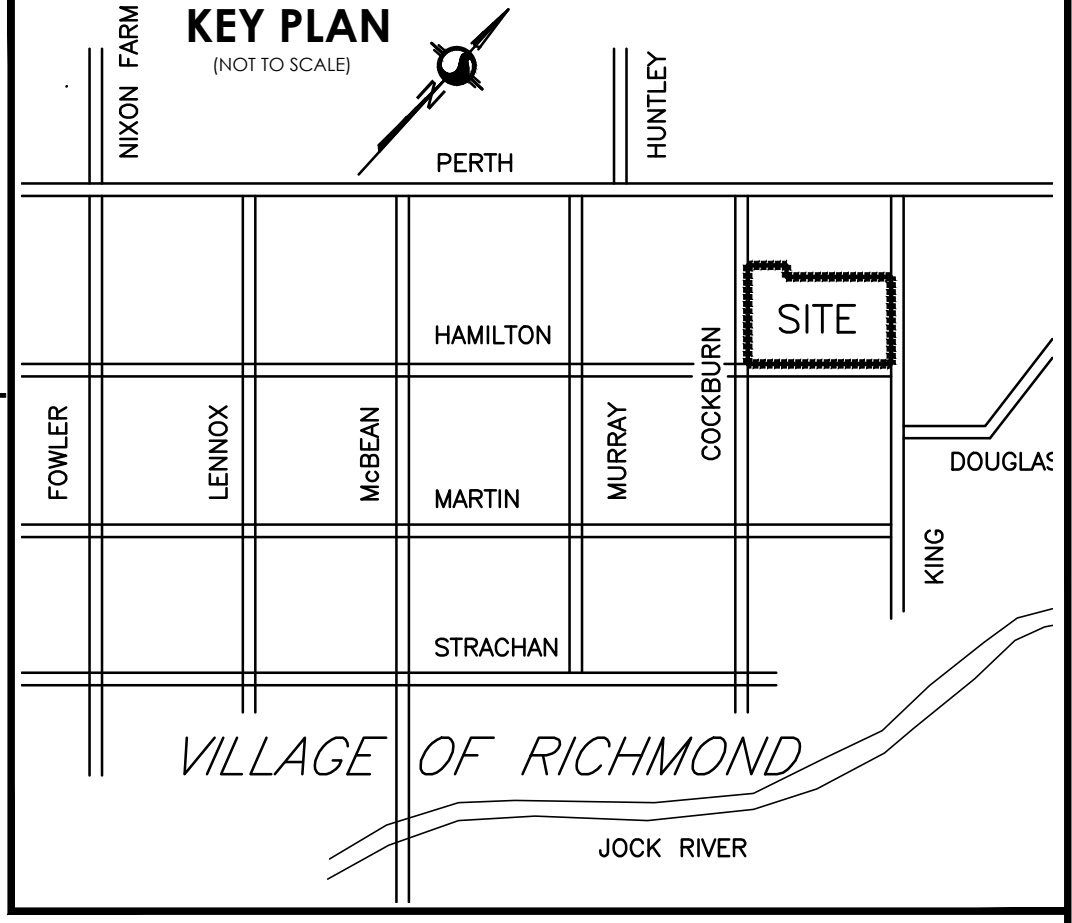


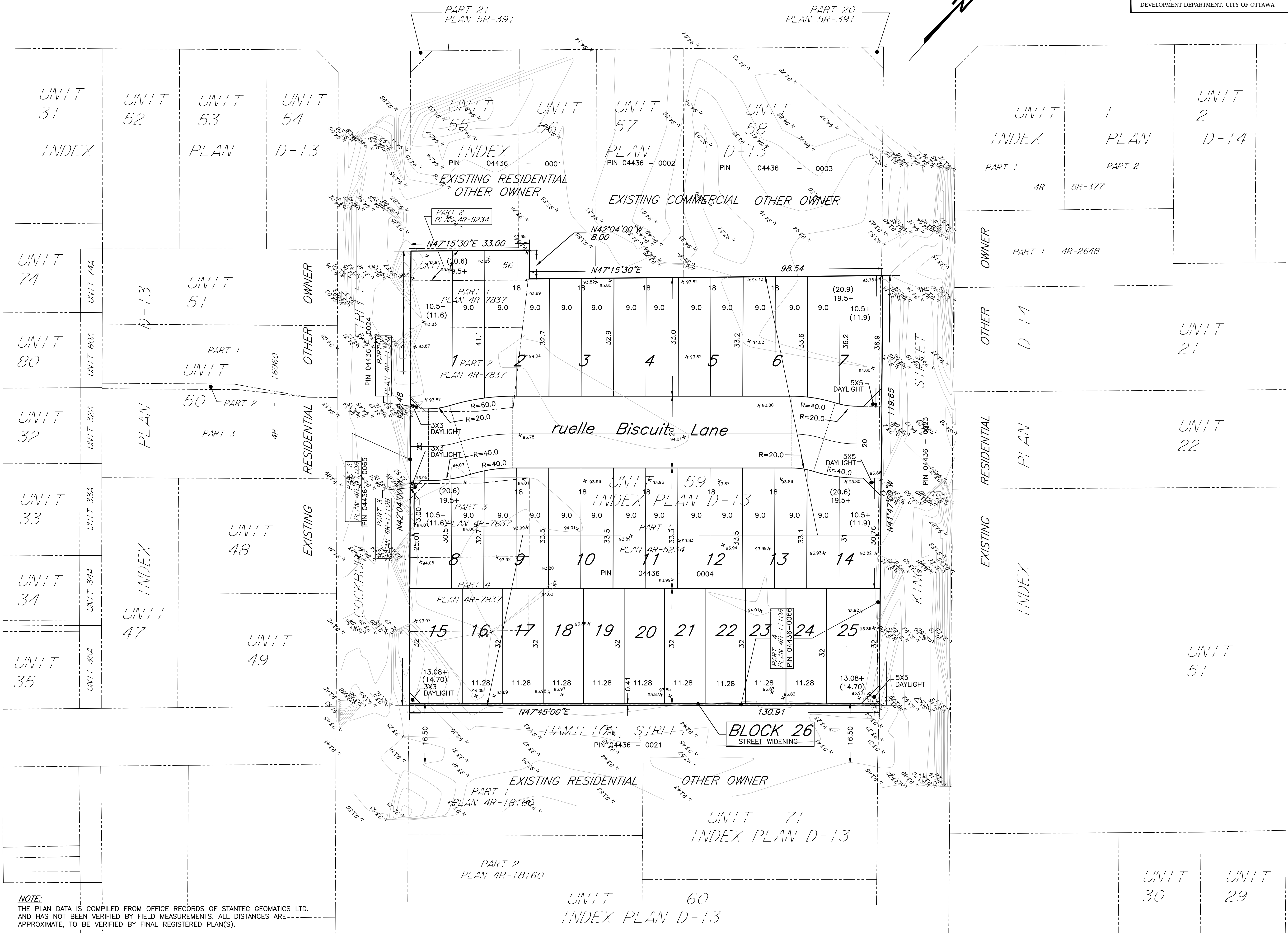
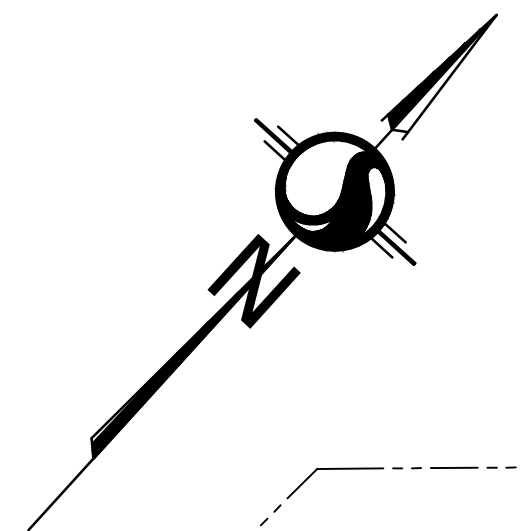
20 May 2018 10:22 AM

SUBJECT TO THE CONDITIONS, IF ANY, SET FORTH IN OUR LETTER DATED _____ 20 ____ THIS DRAFT PLAN IS APPROVED BY THE CITY OF OTTAWA UNDER SECTION 51 OF THE PLANNING ACT. THIS ____ DAY OF _____ 2018.

ADAM BROWN, MANAGER
DEVELOPMENT REVIEW, RURAL PLANNING, INFRASTRUCTURE AND ECONOMIC DEVELOPMENT DEPARTMENT, CITY OF OTTAWA



PERTH STREET
(ROAD ALLOWANCE BETWEEN THE 3RD AND 4TH CONCESSION OF GOULBOURN TOWNSHIP (AS WIDENED))



**DRAFT PLAN OF SUBDIVISION OF
UNIT 59 AND PART OF UNIT 56
INDEX PLAN D-13
(GEOGRAPHIC TOWNSHIP OF GOULBOURN)
CITY OF OTTAWA**

Scale 1:500
10 0 10 20 30 METRES

METRIC CONVERSION
DISTANCES AND COORDINATES SHOWN ON THIS PLAN ARE IN METRES AND CAN BE CONVERTED TO FEET BY DIVIDING BY 0.3048

**ADDITIONAL INFORMATION REQUIRED
UNDER SECTION 51 OF THE PLANNING ACT.**

- (A)-AS SHOWN ON DRAFT PLAN
- (B)-AS SHOWN ON DRAFT PLAN
- (C)-AS SHOWN ON DRAFT AND KEY PLANS
- (D)-RESIDENTIAL
- (E)-AS SHOWN ON DRAFT PLAN
- (F)-AS SHOWN ON DRAFT PLAN
- (G)-AS SHOWN ON DRAFT PLAN
- (H)-PRIVATE WELL
- (I)-SEE SOIL REPORT
- (J)-AS SHOWN ON DRAFT PLAN
- (K)-CITY STORM/SANITARY SERVICES AVAILABLE
- (L)-NONE KNOWN

LAND USE
AREA OF LOTS = 1.32 Hectares (3.26 Acres)
AREA OF BLOCK 26 = 0.23 Hectares (0.56 Acres)
AREA OF ROADS = 0.24 Hectares (0.60 Acres)
TOTAL AREA OF SUBDIVISION = 1.59 Hectares (3.92 Acres)

OWNER'S CERTIFICATE

I HEREBY AUTHORIZE STANTEC GEOMATICS LTD. TO SUBMIT THIS DRAFT PLAN OF SUBDIVISION ON MY BEHALF

DATE _____ DAVID TOSCANO, PRESIDENT
TOSCANO LAND CORP.
I HAVE THE AUTHORITY TO BIND THE CORPORATION

SURVEYOR'S CERTIFICATE

I HEREBY CERTIFY THAT THE BOUNDARIES OF THE SUBJECT LANDS AND THEIR RELATIONSHIP TO ADJOINING LANDS HAVE BEEN ACCURATELY AND CORRECTLY SHOWN.

DATE _____ I. HARTWICK
ONTARIO LAND SURVEYOR

NOTE:
THE PLAN DATA IS COMPILED FROM OFFICE RECORDS OF STANTEC GEOMATICS LTD. AND HAS NOT BEEN VERIFIED BY FIELD MEASUREMENTS. ALL DISTANCES ARE APPROXIMATE, TO BE VERIFIED BY FINAL REGISTERED PLAN(S).

Stantec Geomatics Ltd.
ONTARIO LAND SURVEYORS
CANADA LANDS SURVEYORS
1331 CLYDE AVENUE, SUITE 400
OTTAWA, ONTARIO K2C 3G4
TEL: (613) 722-4420 FAX: (613) 722-2799
stantec.com

DRAWN: CS/CEC CHECKED: KJ PM: KJ FIELD: * PROJECT NO.: 161611899-130