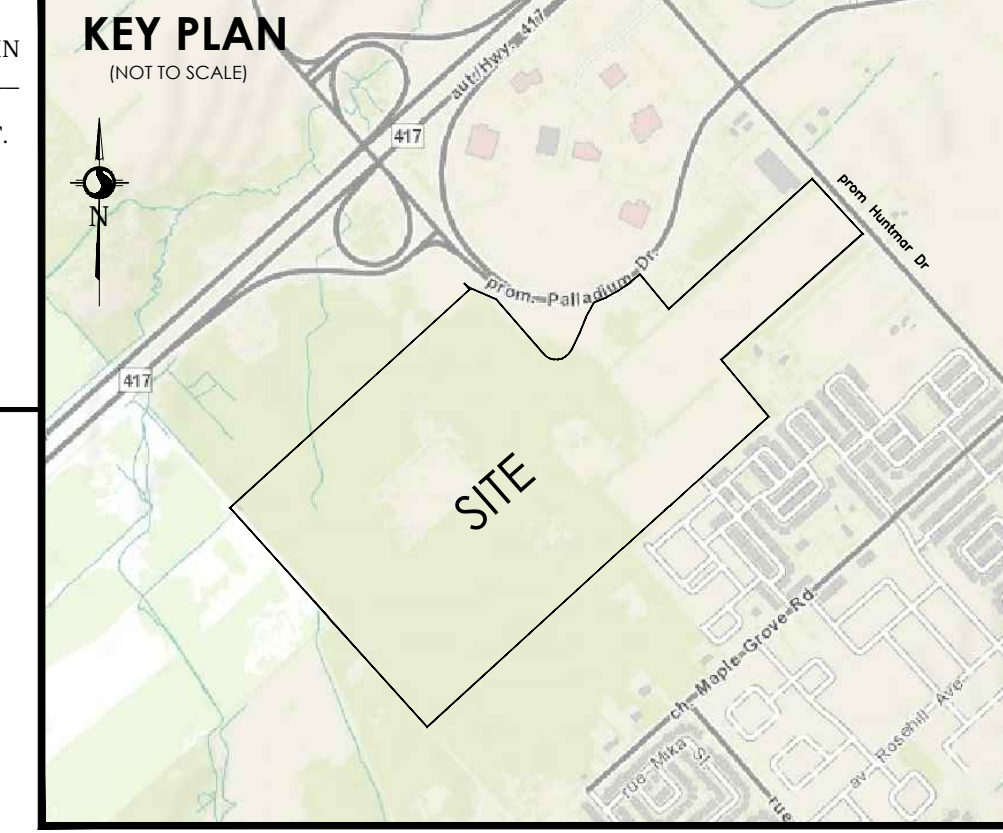


SUBJECT TO THE CONDITIONS, IF ANY, SET FORTH IN OUR LETTER DATED _____ 2017.
 THIS DRAFT PLAN IS APPROVED BY THE CITY OF OTTAWA UNDER SECTION 51 OF THE PLANNING ACT.
 THIS _____ DAY OF _____ 2017.

DERRICK MOODIE
 MANAGER, DEVELOPMENT REVIEW-WEST
 PLANNING, INFRASTRUCTURE AND ECONOMIC
 DEVELOPMENT DEPARTMENT, CITY OF OTTAWA



**DRAFT PLAN OF SUBDIVISION OF
 PART OF LOTS 1 AND 2
 CONCESSION 1
 (GEOGRAPHIC TOWNSHIP OF HUNTLEY)
 CITY OF OTTAWA**

Scale 1:1250
 METRIC CONVERSION
 DISTANCES AND COORDINATES SHOWN ON THIS PLAN ARE IN METRES
 AND CAN BE CONVERTED TO FEET BY DIVIDING BY 0.3048

LOT/BLOCK	USE	UNITS	AREA (Ha/ac)
1 TO 131	RESIDENTIAL SINGLES	131	4.13 / 10.06
132 TO 228	RESIDENTIAL TOWNS	432	8.19 / 20.24
229	RESIDENTIAL STACKED TOWNS	128	1.72 / 4.25
230 AND 231	PARK	637	19.23
232 AND 241	SCHOOL	2	7.42 / 18.38
233 TO 237	COMMERCIAL	12	30.41
238	S.W.P.	4	4.49 / 11.10
239	WALKWAY	1	0.02 / 0.04
240	OPEN SPACE	1	0.36 / 0.89
STREETS			13.12 / 32.42
TOTAL		691	58.12 / 145.42

INFORMATION REQUIRED UNDER SECTION 51 (7) OF THE PLANNING ACT R.S.O. 1990

P. SEE PLAN
 A. SEE PLAN
 R. SEE PLAN
 E. SEE PROPOSED LAND USE SCHEDULE (ABOVE)
 P. SEE PLAN
 S. SEE PLAN
 B. SEE PLAN
 H. CITY WATER AVAILABLE: WELL
 I. SEE SOIL REPORT
 J. SEE TOPOGRAPHICAL INFORMATION
 K. ALL CITY SERVICES AVAILABLE
 L. NO EASEMENTS REGISTERED ON TITLE

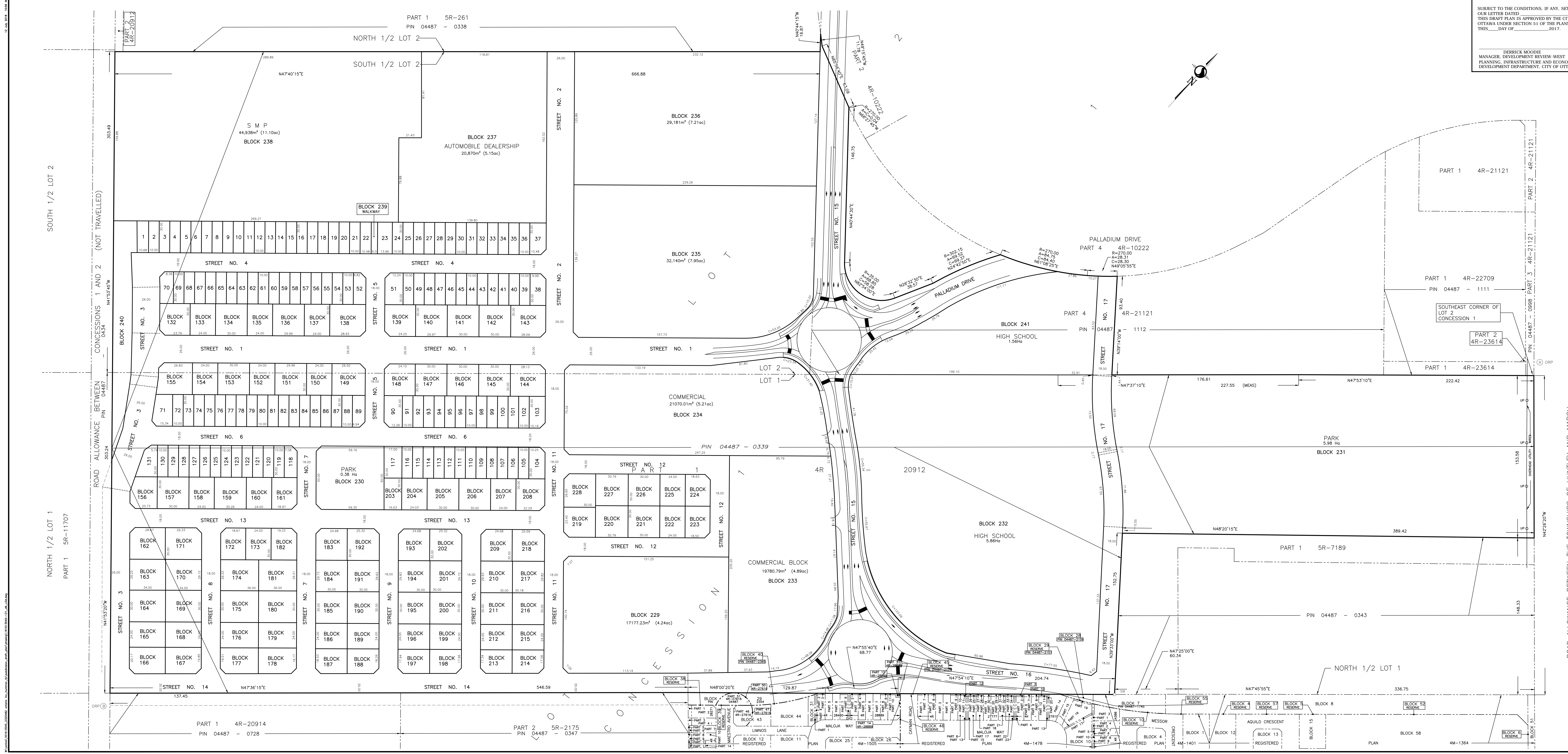
OWNER'S CERTIFICATE
 I HEREBY AUTHORIZE STANTEC GEOMATICS LTD. TO SUBMIT THIS DRAFT PLAN OF SUBDIVISION ON MY BEHALF.

DATE _____ KEVIN MCCRANN
 2325482 ONTARIO INC.

SURVEYOR'S CERTIFICATE
 I HEREBY CERTIFY THAT THE BOUNDARIES OF THE SUBJECT LANDS AND THEIR RELATIONSHIP TO ADJOINING LANDS HAVE BEEN ACCURATELY AND CORRECTLY SHOWN.

DATE _____ BRIAN J. WEBSTER
 ONTARIO LAND SURVEYOR

Stantec Geomatics Ltd.
 CANADA LANDS SURVEYORS
 ONTARIO LAND SURVEYORS
 1331 CLYDE AVENUE, SUITE 400
 OTTAWA, ONTARIO, K2C 3G4
 TEL: (613) 724-4400 FAX: (613) 724-5779
 stantec.com



SOUTH 1/2 LOT 2
 NORTH 1/2 LOT 1
 CONCESSIONS 1 AND 2 (NOT TRAVELLED)
 ROAD ALLOWANCE BETWEEN CONCESSIONS 1 AND 2 (NOT TRAVELLED)
 ROAD ALLOWANCE BETWEEN THE TOWNSHIPS OF HUNTLEY AND MARCH (KNOW AS HUNTMAR ROAD)
 SOUTH 1/2 LOT 1
 NORTH 1/2 LOT 2