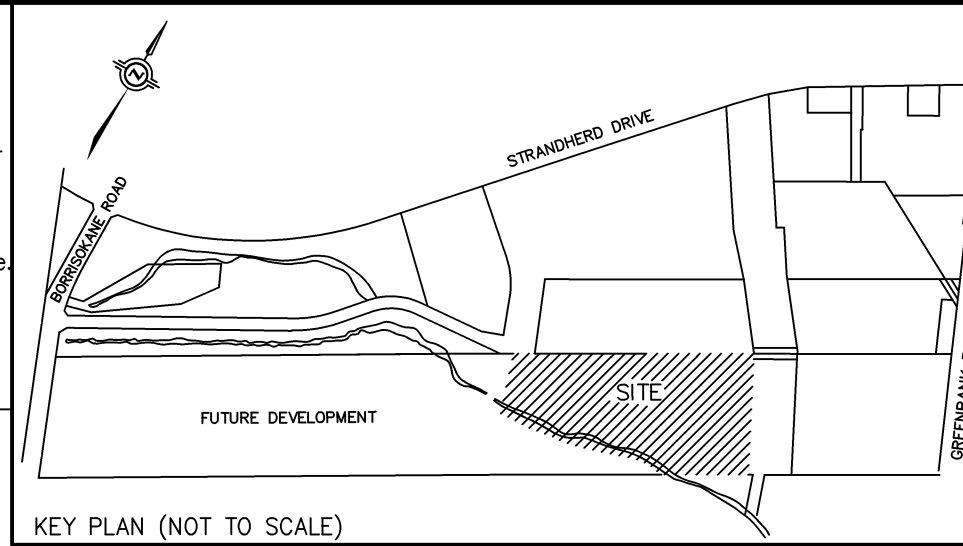


SUBJECT TO THE CONDITIONS, IF ANY, SET FORTH IN OUR LETTER DATED ..... THIS DRAFT PLAN IS APPROVED BY THE CITY OF OTTAWA UNDER SECTION 51 OF THE PLANNING ACT THIS ..... DAY OF ....., 2018.

DON HERWEYER, MCIP RPP, ACTING MANAGER  
DEVELOPMENT REVIEW, URBAN SERVICES  
PLANNING AND GROWTH MANAGEMENT DEPARTMENT  
PLANNING AND INFRASTRUCTURE PORTFOLIO  
CITY OF OTTAWA

**ADDITIONAL INFORMATION**  
As required under section 51(17) of the Planning Act R.S.O. 2001

(a)(b)(e)(f)(g)(i) and (l) - As shown on this Plan.  
(c) - As shown on this Draft and Key Plan  
(d) - Land to be used in accordance with the Schedule of Land Use  
(h)(k) - Full Municipal Services  
(j) - Offshore Marine Deposits of clay, silty clay and silt, Bedrock Ottawa Formation, limestone



DRAFT PLAN OF SUBDIVISION OF  
**PART OF LOT 14**  
**CONCESSION 3 (RIDEAU FRONT)**  
GEOGRAPHIC TOWNSHIP OF NEPEAN  
NOW IN THE  
CITY OF OTTAWA

SCALE 1 : 1000  
METRIC DISTANCES AND/OR COORDINATES SHOWN ON THIS PLAN ARE IN METRES AND CAN BE CONVERTED TO FEET BY DIVIDING BY 0.3048.

Schedule of Land Use			
Land Use	Lots/Blocks	Units	Area
Singles Detached	3 to 13, 18 to 23		3.84 ha.
Rear Lane Townhome	1, 2, 14 to 17		1.14 ha.
Park	24		0.39 ha.
SWM Block	26		0.06 ha.
Streets	1 to 8		2.65 ha.
Lanes	1 to 3		0.23 ha.
Reserves	30 to 34		0.02 ha.
Future Street	CHAPMAN MILLS DRIVE		0.93 ha.
Vista/Walkway	27 to 29		0.07 ha.
Natural Heritage System	25		1.83 ha.
<b>Total</b>			<b>11.16 ha.</b>

**OWNER'S CERTIFICATE**  
BARRHAVEN CONSERVANCY EAST INC., BEING THE REGISTERED OWNER OF THE SUBJECT LANDS HEREBY AUTHORIZES J. D. BARNES LIMITED TO PREPARE AND SUBMIT THIS DRAFT PLAN OF SUBDIVISION FOR APPROVAL.

DATE ..... FRANK CAIRO  
PRESIDENT  
(I HAVE THE AUTHORITY TO BIND THE CORPORATION)

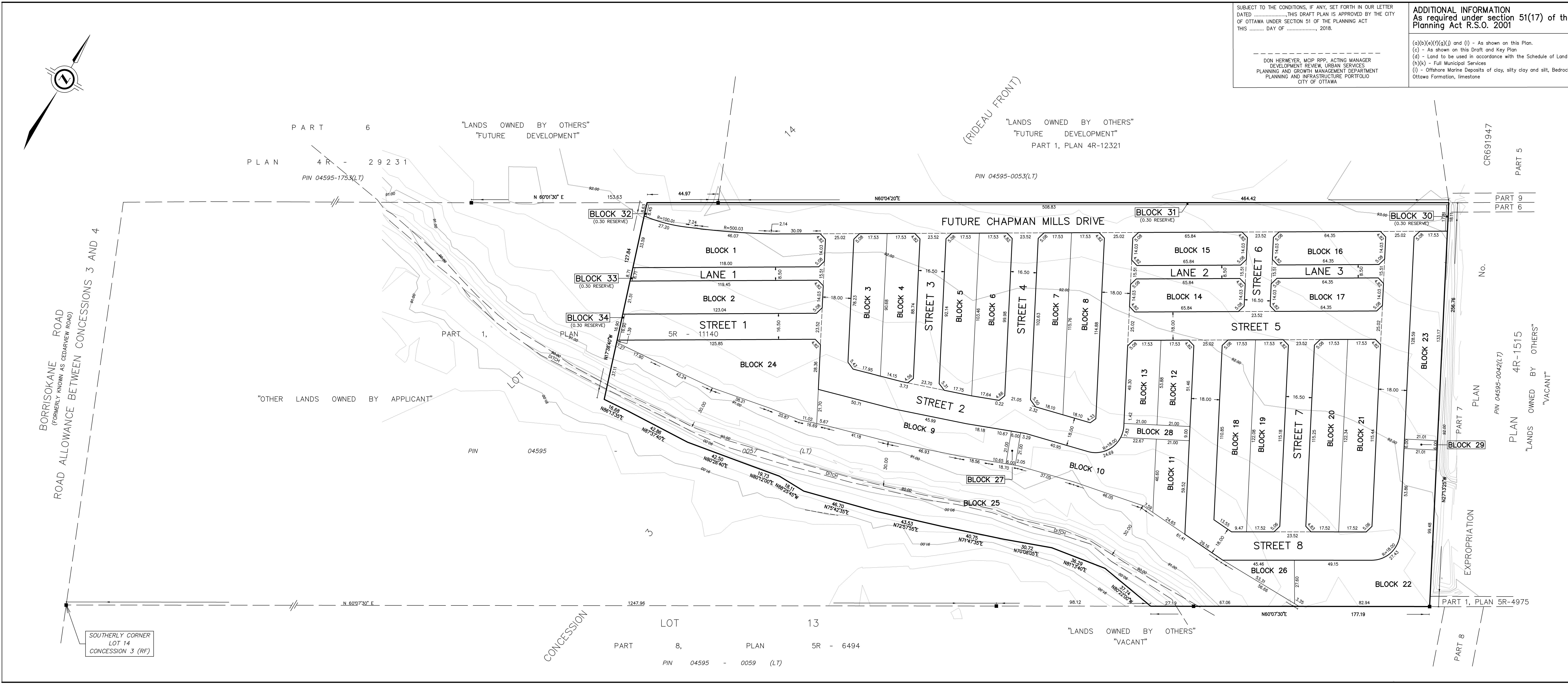
**SURVEYOR'S CERTIFICATE**  
I HEREBY CERTIFY THAT THE BOUNDARIES OF THE LAND TO BE SUBDIVIDED ARE CORRECTLY SHOWN.

DATE ..... C. M. FOX  
ONTARIO LAND SURVEYOR

NOTE BOUNDARY INFORMATION IS COMPILED FROM REFERENCE PLANS WHICH HAS NOT BEEN VERIFIED BY FIELD SURVEY.

**J.D. BARNES** SURVEYING MAPPING GIS LIMITED  
LAND INFORMATION SPECIALISTS  
2430 DON REID DRIVE, SUITE 204, OTTAWA, ON K1H 1E1  
T: (613) 731-7244 F: (613) 731-8955 www.jdbarnes.com

DRAWN BY: CE/RA CHECKED BY: CF REFERENCE NO.: 16-10-127-00  
FILE: G:\16-10-127\00\16-10-127-00DraftPlan.dgn DATED: JUNE 5, 2018  
PLOTTED: 6/5/2018



SOUTHERLY CORNER  
LOT 14  
CONCESSION 3 (RF)

CONCESSION PART 8, LOT 13, PLAN 5R - 6494, PIN 04595 - 0059 (LT)

EXPROPRIATION  
PART 8, PART 1, PLAN 5R-4975

PLAN 4R-1515  
"LANDS OWNED BY OTHERS"  
"VACANT"

PART 5, PART 6

CRG91947

BORRISOKANE ROAD  
(FORMERLY KNOWN AS CEDARVIEW ROAD)  
ROAD ALLOWANCE BETWEEN CONCESSIONS 3 AND 4

PART 6  
PLAN 4R - 29231  
PIN 04595-1753(LT)

(RIDEAU FRONT)  
"LANDS OWNED BY OTHERS"  
"FUTURE DEVELOPMENT"  
PART 1, PLAN 4R-12321  
PIN 04595-0053(LT)

"OTHER LANDS OWNED BY APPLICANT"  
PART 1, LOT 1, PIN 04595

"LANDS OWNED BY OTHERS"  
"VACANT"