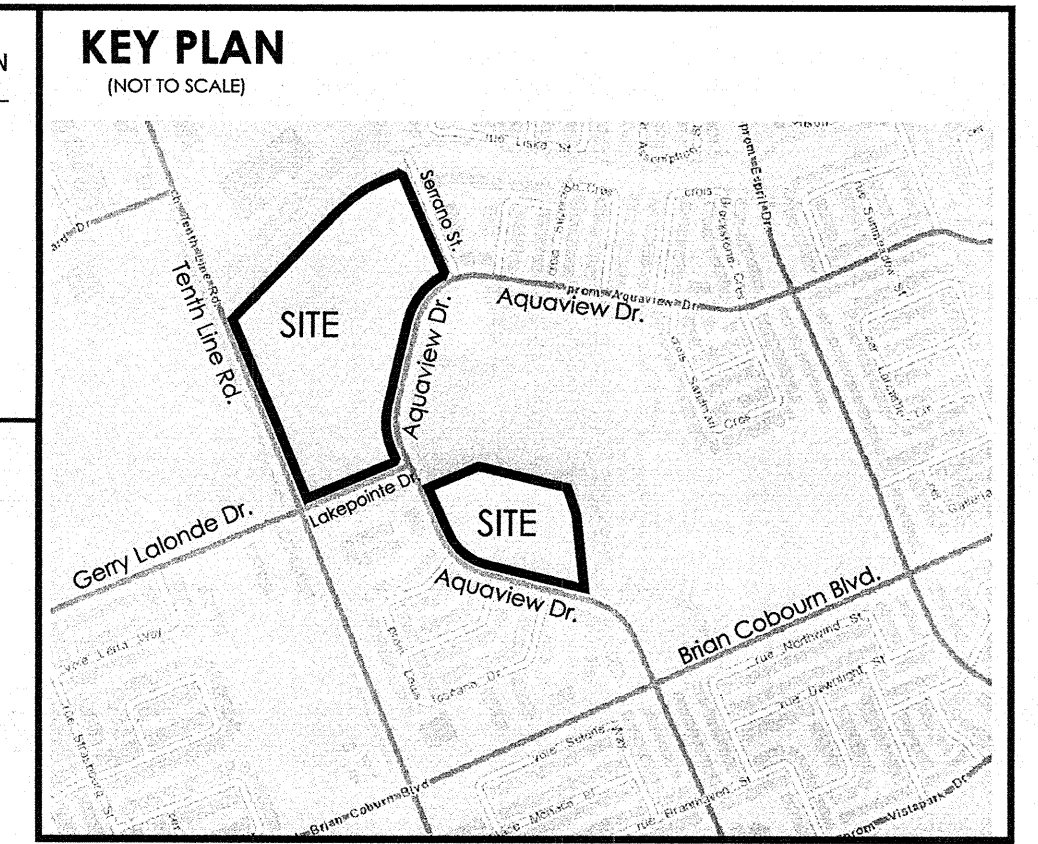
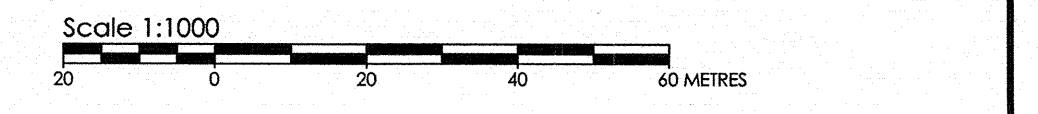


SUBJECT TO THE CONDITIONS, IF ANY, SET FORTH IN OUR LETTER DATED 20 THIS DRAFT PLAN IS APPROVED BY THE CITY OF OTTAWA UNDER SECTION 51 OF THE PLANNING ACT. THIS DAY OF 2018.

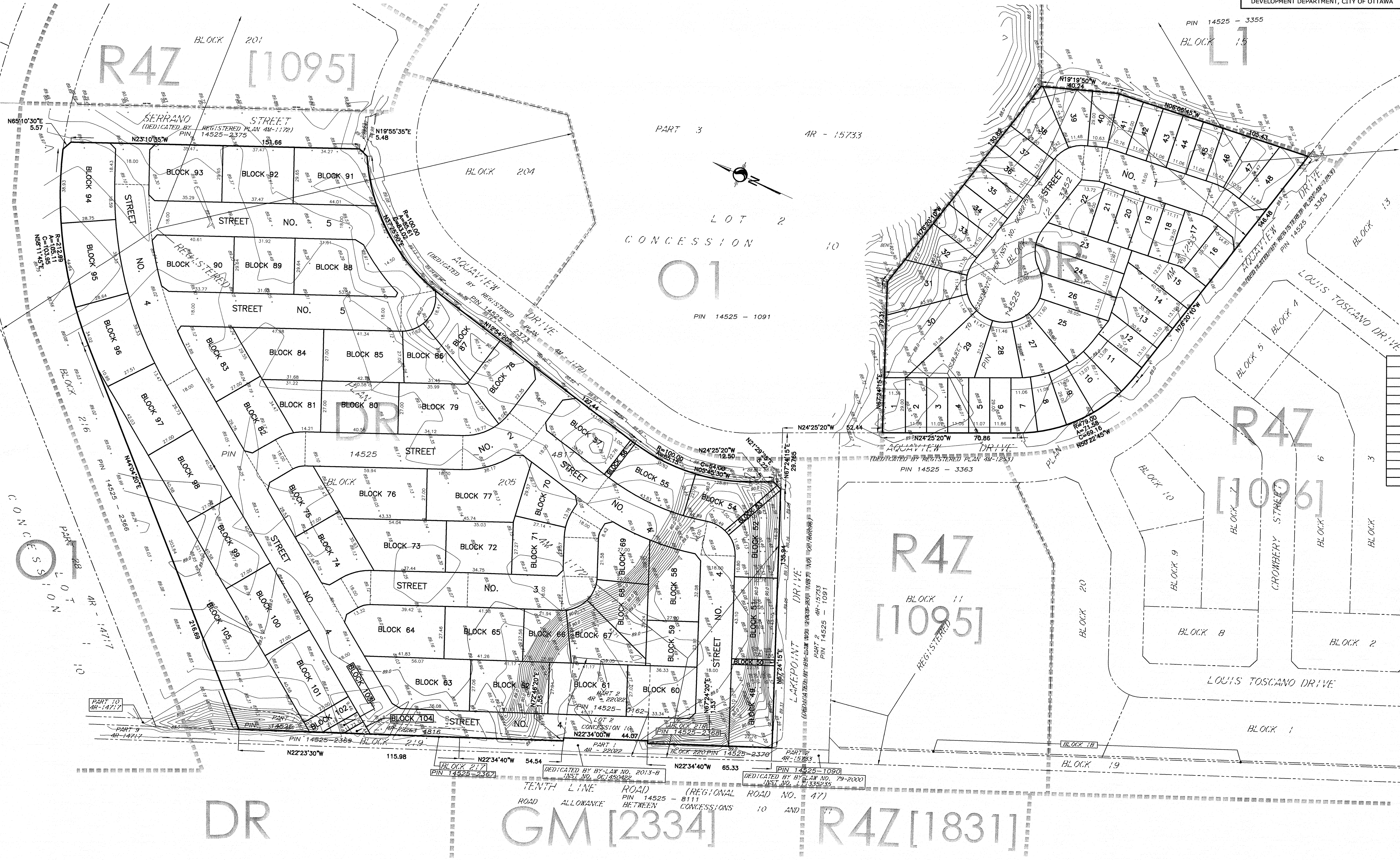
JEFF MCEWEN, P.ENG  
MANAGER, DEVELOPMENT REVIEW-EAST  
PLANNING, INFRASTRUCTURE AND ECONOMIC  
DEVELOPMENT DEPARTMENT, CITY OF OTTAWA



**DRAFT PLAN OF SUBDIVISION OF**  
**BLOCK 12**  
**REGISTERED PLAN 4M-1253 AND**  
**BLOCK 205**  
**REGISTERED PLAN 4M-1172**  
**PART OF LOT 2**  
**CONCESSION 10**  
(GEOGRAPHIC TOWNSHIP OF CUMBERLAND)  
**CITY OF OTTAWA**



**METRIC CONVERSION**  
DISTANCES AND COORDINATES SHOWN ON THIS PLAN ARE IN METRES AND CAN BE CONVERTED TO FEET BY DIVIDING BY 0.3048



SCHEDULE OF LAND USE (Stage 1)			
LOT	USE	UNITS	AREA (Ha/ac)
1 to 48	Singles	48	2.14/5.30
Street	Street	*	0.42/1.03
Total		48	2.56/6.33

SCHEDULE OF LAND USE (Stage 2)			
BLOCK	USE	UNITS	AREA (Ha/ac)
58 to 87, 94 to 101	Executive Townhomes	181	3.82/9.45
88 to 93	Avenue Townhomes (B2B)	58	0.69/1.70
49 to 57	Rear Lane Townhomes	35	0.57/1.41
102 to 104	Open Space		0.04/0.09
105	Transitway		0.35/0.85
Streets	Streets		2.39/5.91
Total		274	7.86/19.41

**INFORMATION REQUIRED UNDER SECTION 51 (7) OF THE PLANNING ACT R.S.O. 1990**

- SEE PLAN
- SEE PLAN
- SEE PLAN
- SEE PROPOSED LAND USE SCHEDULE (ABOVE)
- SEE PLAN
- SEE PLAN
- SEE PLAN
- CITY WATER AVAILABLE
- SEE SOIL REPORT
- SEE TOPOGRAPHICAL INFORMATION
- ALL CITY SERVICES AVAILABLE
- SUBJECT TO EASEMENT PER INST. NO. OC422759.

**OWNER'S CERTIFICATE**  
I HEREBY AUTHORIZE STANTEC GEOMATICS LTD. TO SUBMIT THIS DRAFT PLAN OF SUBDIVISION ON MY BEHALF

MINTO COMMUNITIES INC.

DATE \_\_\_\_\_ DATE \_\_\_\_\_

SUSAN MURPHY  
VICE PRESIDENT

BRENT STRACHAN  
SENIOR VICE PRESIDENT

I HAVE THE AUTHORITY TO BIND THE CORPORATION

I HAVE THE AUTHORITY TO BIND THE CORPORATION

**OWNER'S CERTIFICATE**  
I HEREBY AUTHORIZE STANTEC GEOMATICS LTD. TO SUBMIT THIS DRAFT PLAN OF SUBDIVISION ON MY BEHALF

CITY OF OTTAWA

DATE \_\_\_\_\_

JEFF MCEWEN, P.ENG  
MANAGER, DEVELOPMENT REVIEW-EAST  
PLANNING, INFRASTRUCTURE AND ECONOMIC  
DEVELOPMENT DEPARTMENT, CITY OF OTTAWA

**SURVEYOR'S CERTIFICATE**  
I HEREBY CERTIFY THAT THE BOUNDARIES OF THE SUBJECT LANDS AND THEIR RELATIONSHIP TO ADJOINING LANDS HAVE BEEN ACCURATELY AND CORRECTLY SHOWN.

DATE Mar 26/18

BRIAN J. WEBSTER  
ONTARIO LAND SURVEYOR

**Stantec Geomatics Ltd.**  
CANADA LAND SURVEYORS  
ONTARIO LAND SURVEYORS  
1331 CLYDE AVENUE, SUITE 400  
OTTAWA, ONTARIO, K1C 3G4  
TEL. 613.722.4420 FAX. 613.722.2799  
stantec.com

**NOTE:**  
THE PLAN DATA IS COMPILED FROM OFFICE RECORDS OF STANTEC GEOMATICS LTD. AND HAS NOT BEEN VERIFIED BY FIELD MEASUREMENTS. ALL DISTANCES ARE APPROXIMATE, TO BE VERIFIED BY FINAL REGISTERED PLAN(S).