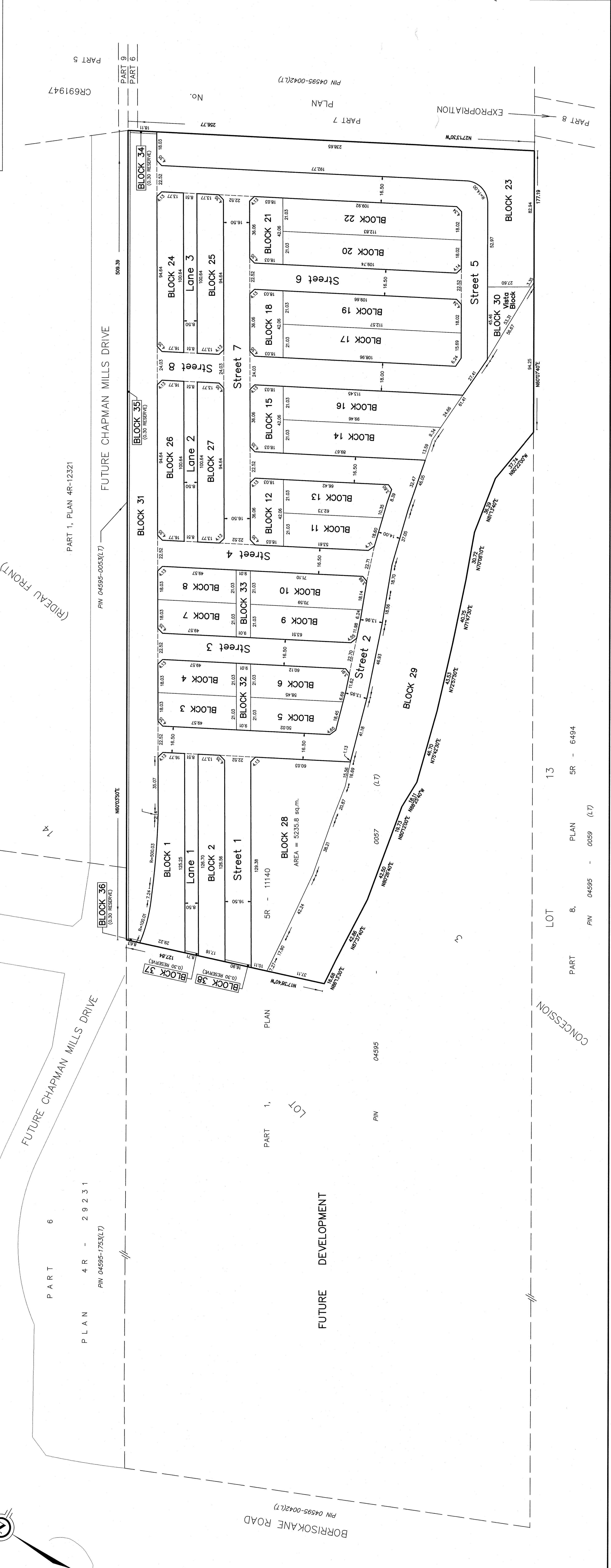


ADDITIONAL INFORMATION
As required under section 51(17) of the Planning Act R.S.O. 2001

(a)(b)(c)(d)(e)(f)(g)(h) and (i) - As shown on this Plan.
(j) - As shown on this Draft and Key Plan.
(k) - Land to be used in accordance with the Schedule of Land Use.
(l) - Full Municipal Services.
(m) - Offered for Deposits of clay, silt, clay and silt, Bedrock, Ottawa Formation, Inclusions.



KEY PLAN (NOT TO SCALE)

DRAFT PLAN OF SUBDIVISION OF
PART OF LOT 14
CONFESSION 3 (RIDEAU FRONT)
GEOGRAPHIC TOWNSHIP OF NEPEAN
NOW IN THE
CITY OF NEPEAN
REGIONAL MUNICIPALITY OF OTTAWA-CARLETON

SCALE 1 : 1000

METRIC DISTANCES AND DIMENSIONS SHOWN ON THIS PLAN ARE IN METRES AND CAN BE CONVERTED TO FEET BY DIVIDING BY 0.3048.

Schedule of Land Use

Land Use	Lots/Blocks	Units	Area
Singles Detached	3 to 23		3.63 ha.
Rear Lane Townhome	1, 2, 24 to 27		1.12 ha.
Open Space	32 and 33		0.08 ha.
Park	28		0.52 ha.
Streets	1 to 8		2.68 ha.
Lanes	1 to 3		0.28 ha.
Reserves	34 to 38		0.03 ha.
Future Street	31		0.93 ha.
Vista Block	30		0.06 ha.
Natural Heritage System	29		1.83 ha.
Total			11.16 ha.

OWNER'S CERTIFICATE

BARRHAVEN CONSERVANCY EAST INC., BEING THE REGISTERED OWNER OF THE SUBJECT LANDS HEREBY AUTHORIZES J. D. BARNES LIMITED TO PREPARE AND SUBMIT THIS DRAFT PLAN OF SUBDIVISION FOR APPROVAL.

DATE _____ FRANK CAIRO
PRESIDENT
(I HAVE THE AUTHORITY TO BIND THE CORPORATION)

SURVEYOR'S CERTIFICATE

I HEREBY CERTIFY THAT THE BOUNDARIES OF THE LAND TO BE SUBDIVIDED ARE CORRECTLY SHOWN.

November 30, 2011
C. M. FOX
ONARIO LAND SURVEYOR

NOTE: BOUNDARY INFORMATION IS COMPILED FROM REFERENCE PLANS WHICH HAS NOT BEEN VERIFIED BY FIELD SURVEY.

J.D. BARNES SURVEYING
LAND INFORMATION SPECIALISTS
LIMITED
2400 DON REID DRIVE, SUITE 204, OTTAWA, ON K1H 1E1
T: (613) 791-7294 F: (613) 791-8955 www.jdbarnes.com

DRAWN BY: CE CHECKED BY: CF
REFERENCE NO.: 16-10-127-00
FILE: G:\08 OTTAWA\16-10-127-00\Drawings\16-10-127-00-certifplan.dwg DATE: NOV. 30, 2011 PLOTTED: 30/11/2011

PART 1, PLAN 4R-12321

PIN 04595-0053(LT)

FUTURE CHAPMAN MILLS DRIVE

LOT 14

PART 6

PLAN 4R - 29231

PIN 04595-1753(LT)

FUTURE CHAPMAN MILLS DRIVE

LOT 13

PART 8, PLAN 5R - 6494

PIN 04595 - 0059 (LT)

CONFESSION

FUTURE DEVELOPMENT

LOT 8

PLAN 5R - 6494

PIN 04595 - 0059 (LT)

CONFESSION

FUTURE DEVELOPMENT

LOT 13

PART 8, PLAN 5R - 6494

PIN 04595 - 0059 (LT)

CONFESSION

FUTURE DEVELOPMENT

LOT 8

PLAN 5R - 6494

PIN 04595 - 0059 (LT)

CONFESSION

FUTURE DEVELOPMENT

LOT 13

PART 8, PLAN 5R - 6494

PIN 04595 - 0059 (LT)

CONFESSION

FUTURE DEVELOPMENT

LOT 8

PLAN 5R - 6494

PIN 04595 - 0059 (LT)

CONFESSION

FUTURE DEVELOPMENT

LOT 13

PART 8, PLAN 5R - 6494

PIN 04595 - 0059 (LT)

CONFESSION

FUTURE DEVELOPMENT

LOT 8

PART 1, PLAN 4R-12321

PIN 04595-0053(LT)

FUTURE CHAPMAN MILLS DRIVE

LOT 14

PART 6

PLAN 4R - 29231

PIN 04595-1753(LT)

FUTURE CHAPMAN MILLS DRIVE

LOT 13

PART 8, PLAN 5R - 6494

PIN 04595 - 0059 (LT)

CONFESSION

FUTURE DEVELOPMENT

LOT 8

PLAN 5R - 6494

PIN 04595 - 0059 (LT)

CONFESSION

FUTURE DEVELOPMENT

LOT 13

PART 8, PLAN 5R - 6494

PIN 04595 - 0059 (LT)

CONFESSION

FUTURE DEVELOPMENT

LOT 8

PLAN 5R - 6494

PIN 04595 - 0059 (LT)

CONFESSION

FUTURE DEVELOPMENT

LOT 13

PART 8, PLAN 5R - 6494

PIN 04595 - 0059 (LT)

CONFESSION

FUTURE DEVELOPMENT

LOT 8

PLAN 5R - 6494

PIN 04595 - 0059 (LT)

CONFESSION

FUTURE DEVELOPMENT

LOT 13

PART 8, PLAN 5R - 6494

PIN 04595 - 0059 (LT)

CONFESSION

FUTURE DEVELOPMENT

LOT 8