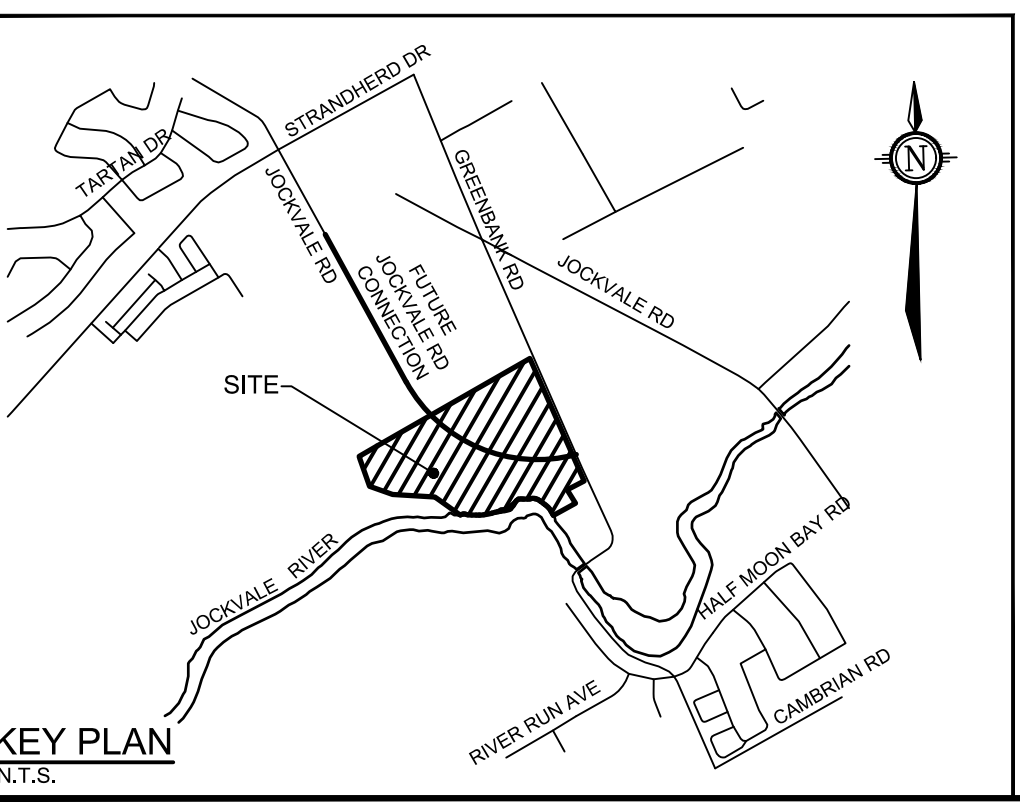
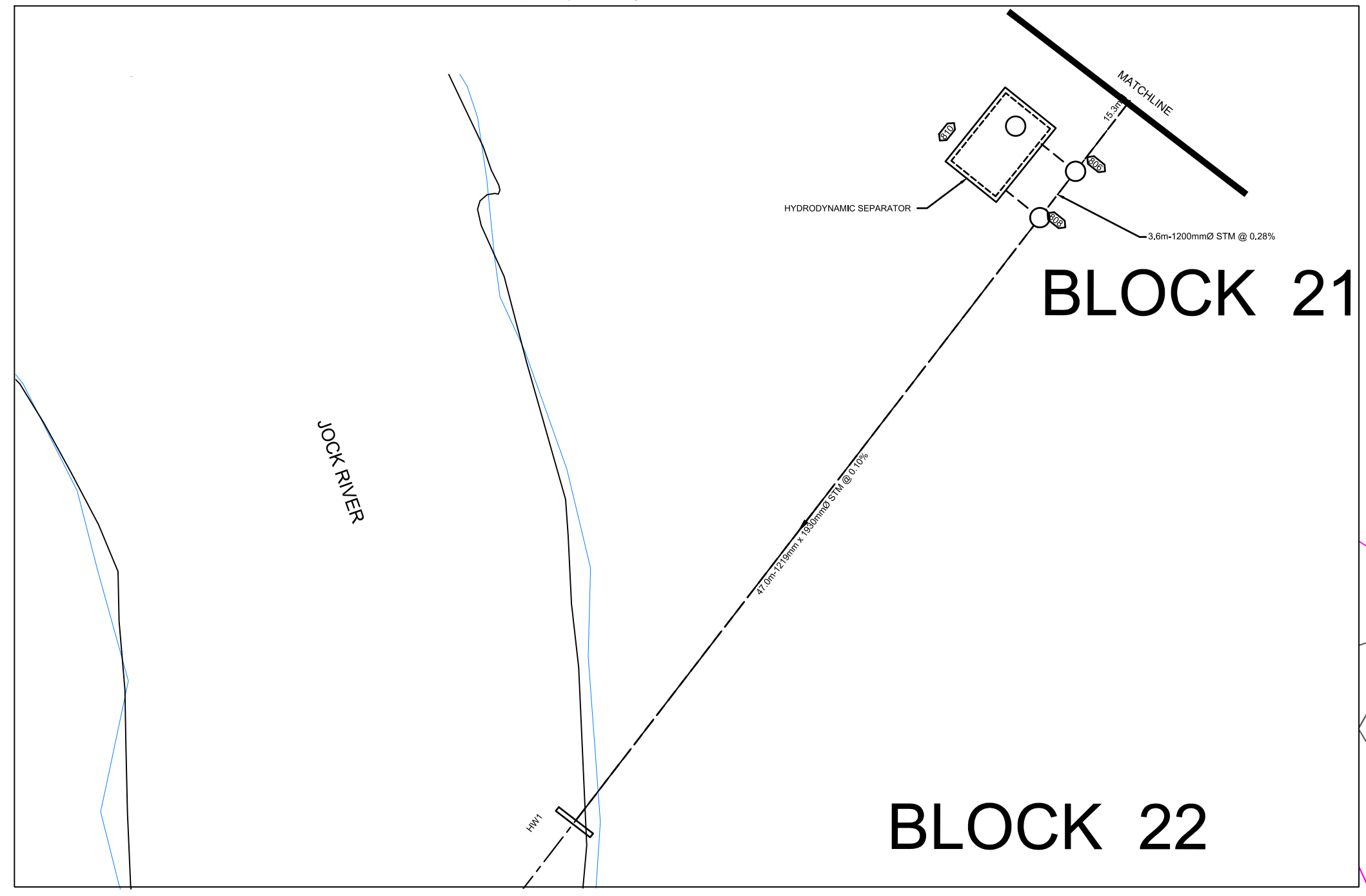
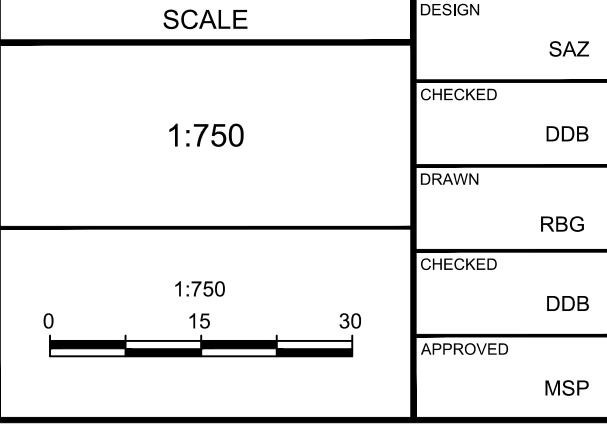


- LEGEND**
- PROPOSED STORM MANHOLE & SEWER
 - PROPOSED CATCH-BASIN/LEAD
 - PROPOSED REAR YARD CATCH-BASIN & SUBCRANK
 - PROPOSED SERVICES LOCATION
 - PROPOSED ROAD CROSSING HEAD WALL
 - FUTURE DEVELOPMENT BY OTHERS
 - ORAINAGE AREA (ENCLOSURE)
 - AREA IDENTIFICATION
 - RUNOFF COEFFICIENT



NOTE:
CONTRACTOR TO CONFIRM ELEVATIONS OF INFRASTRUCTURE IN THE STREET PRIOR TO EXTENDING SERVICES INTO THE SITE AND SHALL NOTIFY ENGINEER OF ANY DISCREPANCIES IMMEDIATELY.

No.	REVISION	DATE	BY
2	REISSUED WITH DRAFT PLAN OF SUBDIVISION	JAN 26/18	MSP
1	ISSUED WITH DRAFT PLAN OF SUBDIVISION	DEC 6/16	GLM



FOR REVIEW ONLY

DESIGN	SAZ
CHECKED	DOB
DRAWN	RBC
CHECKED	DOB
APPROVED	MSP



NOVATECH
Engineers, Planners & Landscape Architects
Suite 200, 240 Michael Cowpland Drive
Ottawa, Ontario, Canada K2M 1P6
Telephone: (613) 254-9643
Facsimile: (613) 254-5867
Website: www.novatech-eng.com

LOCATION
CITY OF OTTAWA
3370 GREENBANK ROAD

DRAWING NAME
STORM DRAINAGE AREA PLAN

PROJECT NO.: 111117
REV: REV #2
DRAWING NO.: 111117-STM1

M:\031117\117\CAD\Design\1117_STM.dwg STA: Jan 26, 2018 - 1:20pm, msprom