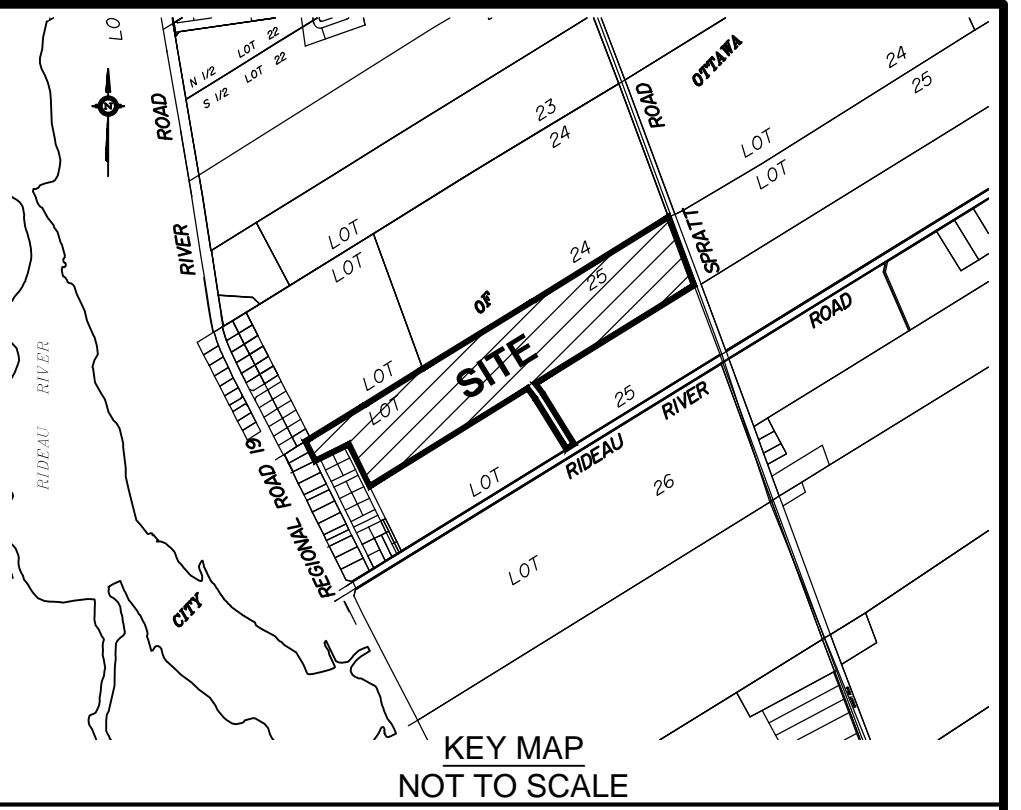


SUBJECT TO THE CONDITIONS, IF ANY, SET FORTH IN OUR LETTER DATED _____

THIS DRAFT PLAN IS APPROVED BY THE CITY OF OTTAWA UNDER SECTION 51 OF THE PLANNING ACT THIS _____ DAY OF _____ 20__.

DON HERVEYER, MCIIP RPP, MANAGER
DEVELOPMENT REVIEW-SOUTH
PLANNING, INFRASTRUCTURE AND ECONOMIC
DEVELOPMENT DEPARTMENT, CITY OF OTTAWA



DRAFT PLAN OF SUBDIVISION OF PART OF LOT 25 BROKEN FRONT CONCESSION (RIDEAU FRONT)
Geographic Township of Gloucester
CITY OF OTTAWA
Prepared by Annis, O'Sullivan, Vollebakk Ltd.

Scale 1 : 1250
0 37.5 75 112.5 150 187.5 225 262.5 300 337.5 375 412.5 450 487.5 525 562.5 600 637.5 675 712.5 750 787.5 825 862.5 900 937.5 975 1012.5 1050 1087.5 1125 1162.5 1200 1237.5 1275 1312.5 1350 1387.5 1425 1462.5 1500 1537.5 1575 1612.5 1650 1687.5 1725 1762.5 1800 1837.5 1875 1912.5 1950 1987.5 2025 2062.5 2100 2137.5 2175 2212.5 2250 2287.5 2325 2362.5 2400 2437.5 2475 2512.5 2550 2587.5 2625 2662.5 2700 2737.5 2775 2812.5 2850 2887.5 2925 2962.5 3000

Metric
DISTANCES SHOWN ON THIS PLAN ARE IN METRES AND CAN BE CONVERTED TO FEET BY DIVIDING BY 0.3048

SURVEYOR'S CERTIFICATE

I CERTIFY THAT:
The boundaries of the lands to be subdivided and their relationship to adjoining lands have been accurately and correctly shown.

Date _____
Edward M. Lancaster
ONTARIO LAND SURVEYOR

OWNER'S CERTIFICATE

This is to certify that I am the owner / agent of the lands to be subdivided and that this plan was prepared in accordance with my instructions.

Date _____
Greg Graham
2356349 Ontario, Inc (Cardel Homes)
I have the authority to bind the corporation

ADDITIONAL INFORMATION REQUIRED UNDER SECTION 51-17 OF THE PLANNING ACT

- (a) see plan
- (b) see plan
- (c) see plan
- (d) single & multi-family residential housing, open space, parkland
- (e) see plan
- (f) see plan
- (g) see plan
- (h) City of Ottawa
- (i) see soils report
- (j) see plan
- (k) sanitary, storm sewers, municipal water, bell, hydro, cable and gas to be available
- (l) see plan