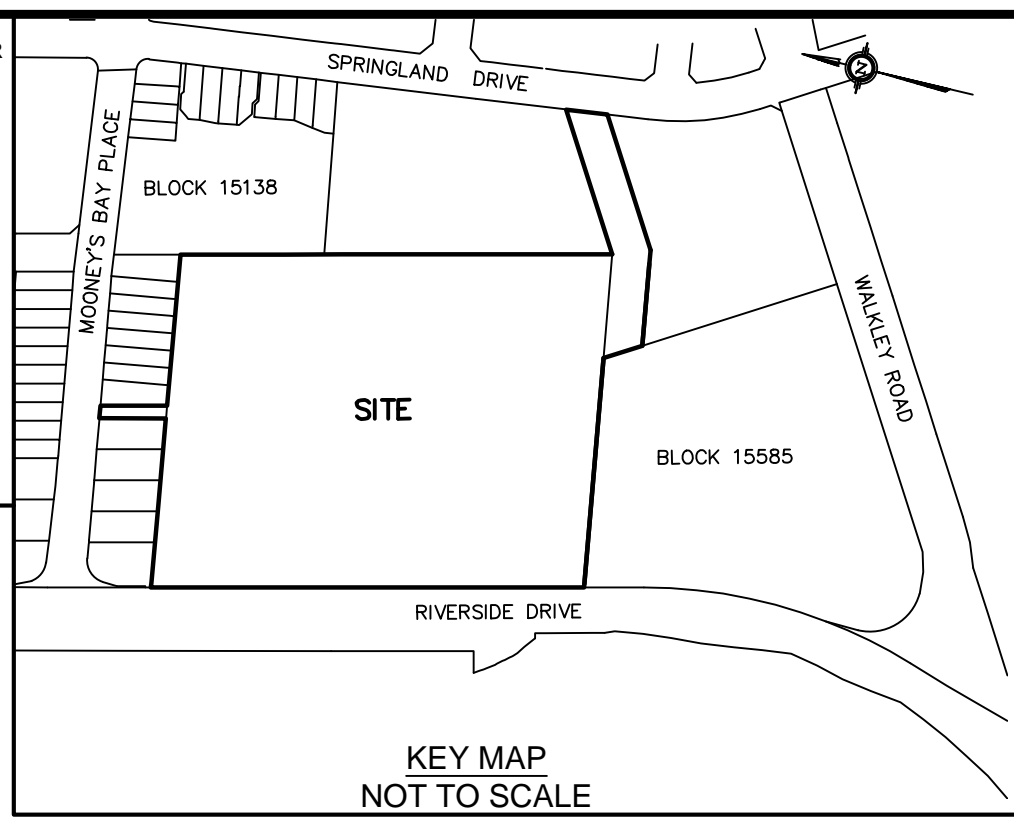


SUBJECT TO THE CONDITIONS, IF ANY, SET FORTH IN OUR LETTER DATED _____

THIS DRAFT PLAN IS APPROVED BY THE CITY OF OTTAWA UNDER SECTION 51 OF THE PLANNING ACT THIS _____ DAY OF _____ 20____

DON HERVEYER, MCP, PFP, ACTING MANAGER
DEVELOPMENT REVIEW, URBAN SERVICES
PLANNING, INFRASTRUCTURE AND ECONOMIC
DEVELOPMENT DEPARTMENT, CITY OF OTTAWA



DRAFT PLAN OF SUBDIVISION OF
**PART OF LOTS 24 and 25
CONCESSION JUNCTION GORE**
GEOGRAPHIC TOWNSHIP OF GLOUCESTER
CITY OF OTTAWA
Prepared by Annis, O'Sullivan, Vollebek Ltd.

Scale 1 : 400

Metric
DISTANCES SHOWN ON THIS PLAN ARE IN METRES AND
CAN BE CONVERTED TO FEET BY DIVIDING BY 0.3048

SURVEYOR'S CERTIFICATE

I CERTIFY THAT:
The boundaries of the lands to be subdivided and their relationship to adjoining lands have been accurately and correctly shown.

Date _____
E. H. Herveyer
ONTARIO LAND SURVEYOR

OWNER'S CERTIFICATE

This is to certify that we are the agent / owners of the lands to be subdivided and that this plan was prepared in accordance with our instructions.

Date _____
Gary Harrell
Chief Executive Officer

Notes & Legend

Denotes

- CLF - Chain Link Fence
- BF - Board Fence
- MF - Metal Fence
- RF - Retaining Wall
- WRW - Wooden Retaining Wall
- HR - Hand Rail
- LE - Location of Elevations
- CC - Top of Concrete Curb / Wall Elevation
- CL - Centreline

BLOCKS	AREA	SQ.M.
1	1101	1394
2	934	898
3	1176	1220
4	1015	1091
5	1170	14001
6	1876	5905
7	6054	359
8	3011	182
9	496	

SITE AREA = 4.316 HA

ADDITIONAL INFORMATION REQUIRED UNDER SECTION 51-17 OF THE PLANNING ACT

(a) see plan
(b) see plan
(c) see plan
(d) see plan
(e) see plan
(f) see plan
(g) see plan
(h) City of Ottawa
(i) see soils report
(j) see plan
(k) sanitary, storm sewers, municipal water, bell, hydro, cable and gas to be available
(l) see plan

