
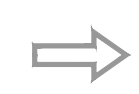


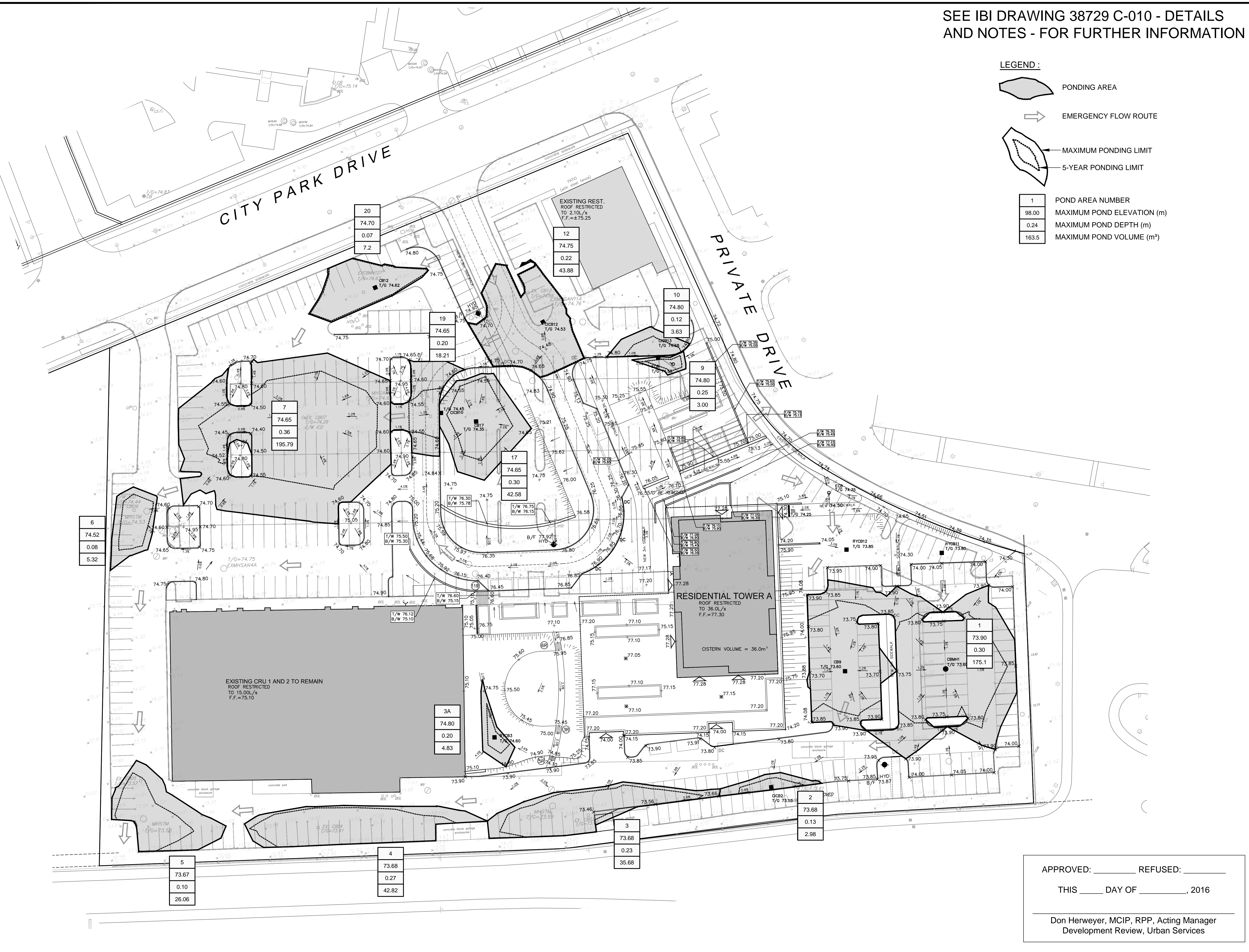


SEE IBI DRAWING 38729 C-010 - DETAILS AND NOTES - FOR FURTHER INFORMATION

**LEGEND:**

-  PONDING AREA
-  EMERGENCY FLOW ROUTE
-  MAXIMUM PONDING LIMIT
-  5-YEAR PONDING LIMIT

1	POND AREA NUMBER
98.00	MAXIMUM POND ELEVATION (m)
0.24	MAXIMUM POND DEPTH (m)
163.5	MAXIMUM POND VOLUME (m <sup>3</sup> )

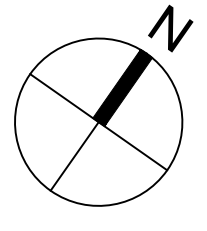


14			
13			
12			
11			
10			
9			
8			
7			
6			
5	REVISED PER CITY COMMENTS	TRB	16:09:22
4	REVISED SITE PLAN	TRB	16:08:22
3	REVISED SITE PLAN	TRB	16:06:06
2	REVISED SITE PLAN	TRB	15:12:04
1	ISSUED TO CITY	TRB	15:11:24
No.	REVISIONS	By	Date



**IBI** IBI GROUP  
400 - 333 Preston Street  
Ottawa ON K1S 5N4 Canada  
tel 613 225 1311 fax 613 225 9868  
ibigroup.com

Project Title  
**2280 CITY PARK DEVELOPMENT PHASE 1**



Drawing Title  
**PONDING PLAN**

Scale  
1:400

APPROVED: \_\_\_\_\_ REFUSED: \_\_\_\_\_  
THIS \_\_\_\_ DAY OF \_\_\_\_\_, 2016  
Don Herweyer, MCIP, RPP, Acting Manager  
Development Review, Urban Services

Design	J.E.B.	Date	SEPTEMBER 2015
Drawn	E.H.	Checked	T.R.B.
Project No.	38729	Drawing No.	C-400

J:\38729-SilverCreek\38729-C-400 PONDING PLAN.dwg Layout Name: C-400 PONDING PLAN.dwg Layout Name: C-400 PONDING PLAN Plot Style: AIA STANDARD-FULLCTB Plot Scale: 1:0.8 Printed At: 9/22/2016 11:50 AM Last Saved By: James.Bolton.Lant

#XXXXX