
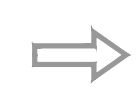


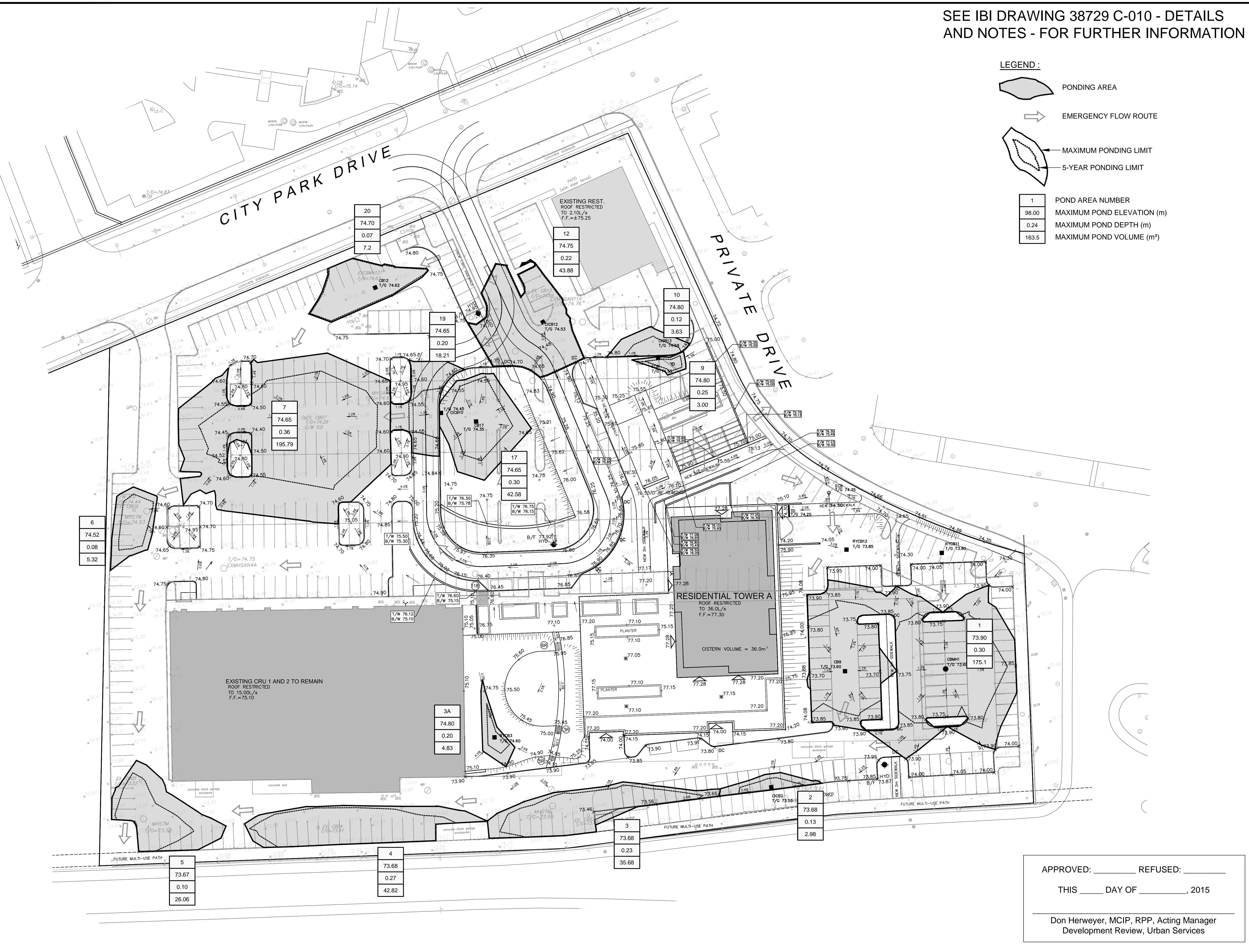


SEE IBI DRAWING 38729 C-010 - DETAILS AND NOTES - FOR FURTHER INFORMATION

**LEGEND:**

-  PONDING AREA
-  EMERGENCY FLOW ROUTE
-  MAXIMUM PONDING LIMIT
-  5-YEAR PONDING LIMIT

1	POND AREA NUMBER
98.00	MAXIMUM POND ELEVATION (m)
0.24	MAXIMUM POND DEPTH (m)
163.5	MAXIMUM POND VOLUME (m <sup>3</sup> )

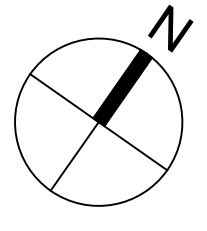


14		
13		
12		
11		
10		
9		
8		
7		
6		
5		
4	REVISED SITE PLAN	TRB 16:08:22
3	REVISED SITE PLAN	TRB 16:06:06
2	REVISED SITE PLAN	TRB 15:12:04
1	ISSUED TO CITY	TRB 15:11:24
No.	REVISIONS	By Date

**RIO CAN**

**IBI** IBI GROUP  
400 - 333 Preston Street  
Ottawa ON K1S 5N4 Canada  
tel 613 225 1311 fax 613 225 9868  
ibigroup.com

Project Title  
**2280 CITY PARK DEVELOPMENT PHASE 1**



Drawing Title  
**PONDING PLAN**

Scale  
1:400

APPROVED: \_\_\_\_\_ REFUSED: \_\_\_\_\_  
THIS \_\_\_\_ DAY OF \_\_\_\_\_, 2015  
Don Herweyer, MCIP, RPP, Acting Manager  
Development Review, Urban Services

Design	J.E.B.	Date	SEPTEMBER 2015
Drawn	E.H.	Checked	T.R.B.
Project No.	38729	Drawing No.	C-400

J:\38729-SilverCreek\38729-C-400 PONDING PLAN.dwg Layout Name: C-400 PONDING PLAN Plot Style: AIA STANDARD-FULLCTB Plot Scale: 1:0.8 Printed At: 8/23/2016 1:19 PM User: J. Brule  
 J:\38729-SilverCreek\38729-C-400 PONDING PLAN.dwg Layout Name: C-400 PONDING PLAN Plot Style: AIA STANDARD-FULLCTB Plot Scale: 1:0.8 Printed At: 8/23/2016 1:19 PM User: J. Brule

#XXXXX