



**SITE DESCRIPTION**

THE SITE IS OF LOW ENVIRONMENTAL VALUE, AS IT IS BARE, COVERED IN ASPHALT, POOR TURF OR RUBBLE, AND IS SURROUNDED ON ALL SIDES BY MORE ASPHALT TO THE NORTH AND INDUSTRIAL AVENUE TO THE SOUTH. THERE ARE FEW TREES ON THE SITE, AND THESE ARE MAINLY IN POOR CONDITION, WITH FEW EXCEPTIONS. THE MAJORITY OF THESE ARE ASH TREES OR AUSTRIAN PINES, HEAVILY PRUNED FOR HYDRO CLEARANCE. THE ASH TREES ARE LIKELY INFECTED WITH EMERALD ASH BORER.

**GREENSPACE LINKAGE**

THE SITE IS ADJACENT TO AN AREA IDENTIFIED AS 'SUPPORTING' ON THE CITY OF OTTAWA GREENSPACE MASTER PLAN, BUT WHICH HAS BEEN DEVELOPPED SINCE THE PLAN'S ISSUANCE. THE SITE HAS NO MEANINGFUL CONNECTION TO ANY OTHER SIGNIFICANT GREENSPACE, NO SURFACE WATER AND NO SIGNIFICANT SLOPES.

**ADDITIONAL INFORMATION**

**OWNER**  
THE OTTAWA TRAIN YARDS INC.  
223 COLONNADE RD S, SUITE 100  
OTTAWA, ON  
K2E 7K3

**MUNICIPAL ADDRESS**  
575-605 INDUSTRIAL AVE,  
OTTAWA, ON

**APPLICANT**  
CORUSH SUNDERLAND WRIGHT LTD.  
1960 SCOTT STREET, SUITE 200  
OTTAWA, ONTARIO K1Z-8L8  
TEL. 613 729-4536

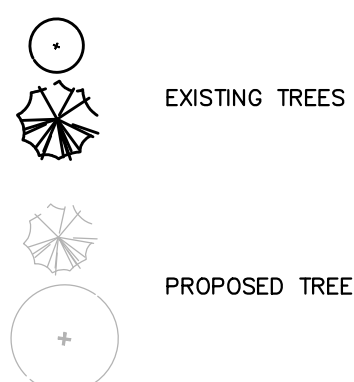
**ZONING DESIGNATION**  
MIXED-USE CENTRE DESIGNATION  
MQ(1387)-h ZONING

**SITE PLAN APPLICATION**  
N/A

**AUTHOR**  
LISA MACDONALD BLA, CSLA, ISA # ON-1513A  
CORUSH SUNDERLAND WRIGHT LTD.  
1960 SCOTT STREET, SUITE 200  
OTTAWA, ONTARIO K1Z-8L8  
TEL. 613 729-4536

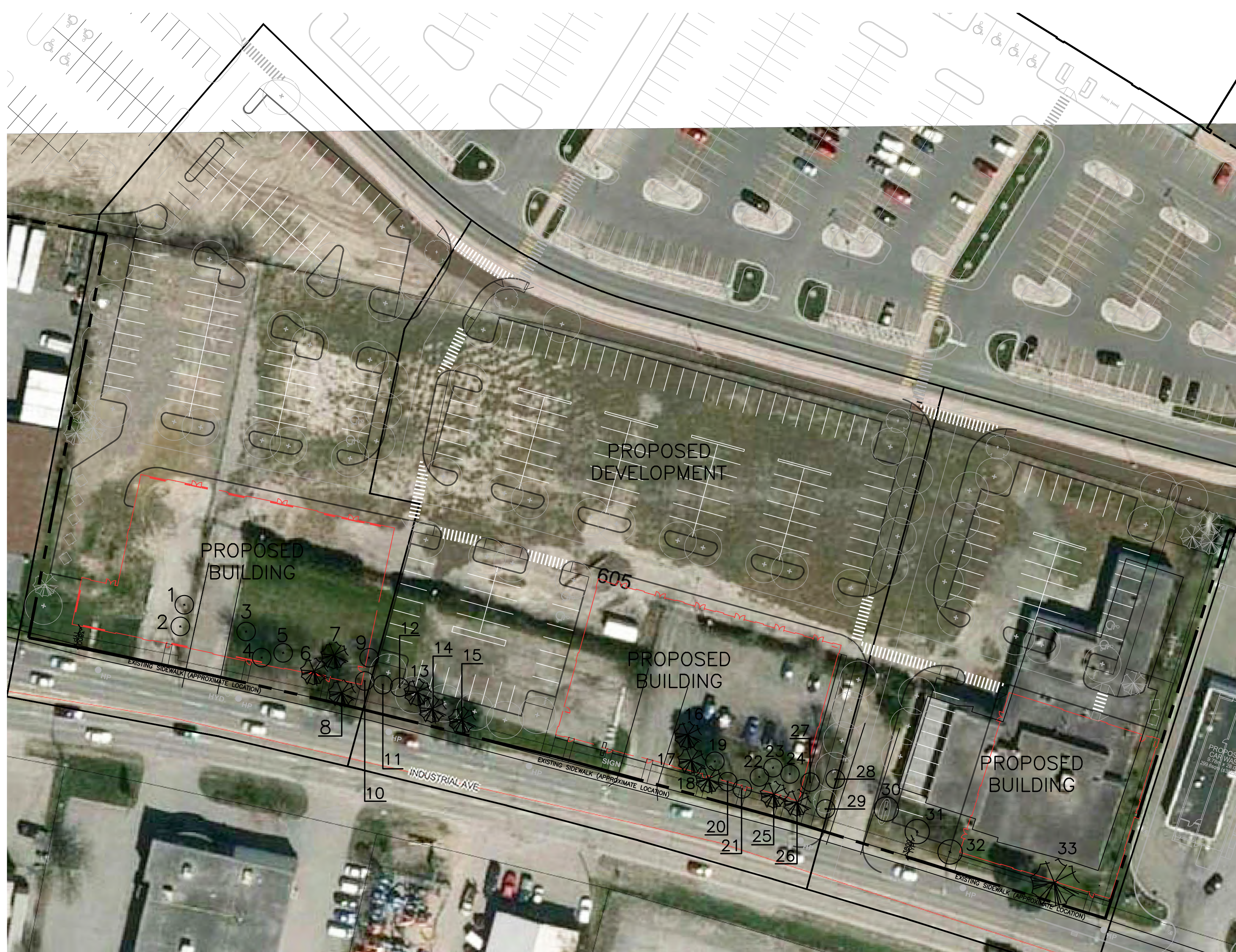
**WORK SCHEDULE**  
SPRING, 2013

**LEGEND**



**NOTES**

- ALL OF THE EXISTING TREES AND VEGETATION ON THE SITE ARE TO BE REMOVED. THIS IS DUE TO THEIR BEING SITUATED INSIDE THE FOOTPRINT OF THE PROPOSED ASPHALT PARKING AREAS AND PROPOSED BUILDINGS, AND THE NECESSARY REGRADING OF THE SITE. ALSO, SEVERAL OF THE TREES REQUIRE REMOVAL IMMEDIATELY (ALREADY DEAD).
- THERE ARE 33 TREES ON THE SITE, AT LEAST 3 OF WHICH ARE ALREADY DEAD. OF THE LIVING TREES, 17 ARE ASH TREES LIKELY ALREADY INFECTED BY EAB.
- THERE ARE 84 NEW TREES PROPOSED TO BE PLANTED ON THE REDEVELOPPED SITE. THESE WILL NOT BE SIMILAR IN SPECIES DISTRIBUTION TO THE VEGETATION REMOVED FROM THE SITE DUE TO THE UNSUITABILITY OF THE EXISTING SPECIES FOR THE PROPOSED DEVELOPMENT AND THE PROPENSITY OF ASH TREES TO DISEASE. THE PROPOSED NEW TREES WILL BE MAINLY DECIDUOUS TREES AND WILL INCLUDE MAPLE, HONEYLOCUST, OAK, CRABAPPLE, ELM AND SPRUCE. REFER TO THE LANDSCAPE DRAWINGS FOR A FULL PLANT LIST.



**PLANT LIST**

#	BOTANICAL NAME	COMMON NAME	CALIPER (cm)	CONDITION	APPROXIMATE AGE	HIGH QUALITY TREE	RARE TREE	COMMENTS	TO BE PRESERVED
1	Acer saccharum	Sugar Maple	24.2	POOR/ DEAD	41	NO	NO		NO
2	Acer saccharum	Sugar Maple	N/A	DEAD	N/A	NO	NO		NO
3	Fraxinus pennsylvanica	Green Ash	30-35cm approx	POOR	47	NO	NO	The tree is suckering heavily. It has been severely pruned for hydro clearance. There are no exit holes indicating an EAB infestation, and the tree is defoliated due to the season.	NO
4	Fraxinus pennsylvanica	Green Ash	42.0	POOR	66	NO	NO	The tree has been severely pruned for hydro clearance. There are no exit holes indicating an EAB infestation, and the tree is defoliated due to the season.	NO
5	Acer saccharum	Sugar Maple	N/A	DEAD	N/A	NO	NO		NO
6	Pinus nigra	Austrian Pine	38.4	MODERATE	68	NO	NO	The tree has been severely pruned for hydro clearance, but is otherwise in moderate condition.	NO
7	Pinus nigra	Austrian Pine	36.8	MODERATE	65	NO	NO	See notes for Tree 6	NO
8	Pinus nigra	Austrian Pine	31.4	MODERATE	56	NO	NO	See notes for Tree 6	NO
9	Fraxinus pennsylvanica	Green Ash	28 approx	POOR	44	NO	NO	See notes for tree 3	NO
10	Fraxinus pennsylvanica	Green Ash	35.6	POOR	56	NO	NO	See notes for tree 4	NO
11	Fraxinus pennsylvanica	Green Ash	29.6	POOR	47	NO	NO	See notes for tree 4	NO
12	Fraxinus pennsylvanica	Green Ash	N/A	DEAD	N/A	NO	NO		NO
13	Pinus nigra	Austrian Pine	MS (2) 27.2 & 21.0	MODERATE	45	NO	NO	The tree is in good health, but is beginning to grow into the overhead hydro lines.	NO
14	Pinus nigra	Austrian Pine	MS (2) 27.2 & 27.5	MODERATE-GOOD	49	NO	NO	See notes for Tree 13	NO
15	Pinus nigra	Austrian Pine	29.8	MODERATE-GOOD	53	NO	NO	See notes for Tree 13	NO
16	Pinus nigra	Austrian Pine	30.7	MODERATE-GOOD	55	NO	NO	The tree is in moderate to good condition.	NO
17	Pinus nigra	Austrian Pine	29.2	MODERATE	52	NO	NO	The tree is in moderate to good condition.	NO
18	Pinus nigra	Austrian Pine	41.4	MODERATE	74	NO	NO	The tree is in moderate to good condition.	NO
19	Fraxinus pennsylvanica	Green Ash	39.2	POOR	62	NO	NO	See notes for Tree 4	NO
20	Fraxinus pennsylvanica	Green Ash	38.2	POOR	60	NO	NO	See notes for Tree 4	NO
21	Fraxinus pennsylvanica	Green Ash	25.4	POOR	40	NO	NO	The tree has a severe lean, has been severely pruned for hydro, and has no exit holes indicating EAB. The tree is completely defoliated due to the season.	NO
22	Fraxinus pennsylvanica	Green Ash	MS (4) 22.4-32.0	POOR	42	NO	NO	See notes for Tree 4	NO
23	Fraxinus pennsylvanica	Green Ash	35.6	POOR	56	NO	NO	See notes for Tree 4	NO
24	Fraxinus pennsylvanica	Green Ash	35 approx	POOR	55	NO	NO	See notes for tree 3	NO
25	Pinus nigra	Austrian Pine	21.0	MODERATE-POOR	37	NO	NO	This tree has been topped for hydro clearance, and is otherwise in moderate to poor condition	NO
26	Pinus nigra	Austrian Pine	21.7	MODERATE-POOR	38	NO	NO	See notes for tree 25	NO
27	Fraxinus pennsylvanica	Green Ash	MS (2) 30 & 30 approx	MODERATE-POOR	47	NO	NO	This tree has not been pruned for hydro, and has no EAB exit holes, however it is suckering severely and the branches at the crown are discoloured and seem to indicate some crown-death	NO
28	Fraxinus pennsylvanica	Green Ash	35.1	MODERATE-POOR	55	NO	NO	See notes for tree 27	NO
29	Fraxinus pennsylvanica	Green Ash	40.8	MODERATE-POOR	64	NO	NO	See notes for tree 27	NO
30	Fraxinus pennsylvanica	Green Ash	25 approx	MODERATE-POOR	39	NO	NO	See notes for tree 27	NO
31	Fraxinus pennsylvanica	Green Ash	30 approx	MODERATE-POOR	47	NO	NO	See notes for tree 27	NO
32	Malus sp.	Crabapple	39.4	MODERATE	63	NO	NO	The tree is in relatively good condition, however it has a large split in the trunk, which has resulted in the death of a main branch.	NO
33	Pinus nigra	Austrian Pine	41.8	GOOD	73	NO	NO	The tree is in good condition. The lower limbs have been pruned, but the leader is intact and in good condition.	NO

1	ISSUED FOR SPA	20 DEC, 2012
No.	Revision	Date

North

Stamp

It is the responsibility of the contractor to:  
\*check and verify all dimensions on site;  
\*report all errors and/or omissions to the landscape architect;

\*comply with all pertinent codes and by-laws  
\*check and verify locations of all underground services with all local utilities prior to any digging.

Do not scale drawings. This drawing may not be used for construction until signed by the landscape architect.

Copyright reserved. This drawing is the exclusive property of Corush Sunderland Wright Ltd. and shall not be used without consent.

**CORUSH SUNDERLAND WRIGHT**

Landscape Architecture  
Urban Design  
Site Planning  
Recreation and Park Planning  
Project Management

1960 Scott Street, Suite 200, Ottawa, Ontario, Canada K1Z 8L8  
Tel: (613) 729-4536 Fax: (613) 723-3018

Project

**OTTAWA TRAIN YARDS PHASE 3 PARCEL 575-585-595**

OTTAWA, ONTARIO

Drawing

**TREE INVENTORY & ARBORIST REPORT**

Scale: 1:500

Date: 12 DEC, 2012

Design By: SM

Drawn By: LM

Project Number: 1311-09B

Sheet Number: ARB-1