

SURVEYOR'S REAL PROPERTY REPORT

PART 1 Plan of LOTS 49 & 50 AND WEST HALF OF LOT 51 (South Rideau Street) REGISTERED PLAN 6 CITY OF OTTAWA

Surveyed by Annis, O'Sullivan, Vollebek Ltd.

Scale 1 : 200

8.0 6.0 4.0 2.0 0 4 8 Metres

Metric DISTANCES SHOWN ON THIS PLAN ARE IN METRES AND CAN BE CONVERTED TO FEET BY DIVIDING BY 0.3048

Surveyor's Certificate

- I CERTIFY THAT: 1. This survey and plan are correct and in accordance with the Surveys Act and the Surveyors Act and the regulations made under them. 2. The survey was completed on the 11th day of April, 2016.

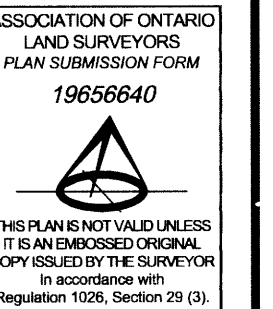
April 11, 2016 Edward M. Lancaster Ontario Land Surveyor

PART 2 THIS PLAN MUST BE READ IN CONJUNCTION WITH SURVEY REPORT DATED: April 12, 2016

ANNIS, O'SULLIVAN, VOLLEBEK LTD. grants to Richcraft (Rideau) Ltd. ("The Client"), their solicitors, mortgagees, and other related parties, permission to use original, signed, sealed copies of the Surveyor's Real Property Report in transactions involving The Client.

Notes & Legend

- Denotes Survey Monument Planted Survey Monument Found SIB Standard Iron Bar SSIB Short Standard Iron Bar CC Cut Cross (WIT) Witness (AOG) Annis, O'Sullivan, Vollebek Ltd. Meas. Measured (P1) Plan 4R-26482 (P2) (AOG) Notes for Plan 4R-26482 MH-ST Maintenance Hole (Storm Sewer) MH-T Maintenance Hole (Traffic) MH-H Maintenance Hole (Hydro) MH Maintenance Hole (Unidentified) OHW Overhead Wires UP Utility Pole AN Anchor LS Light Standard CBI Catch Basin Inlet FH Fire Hydrant T/G Top of Grate HH Handhole TB-B Bell Terminal Box Deciduous Tree Coniferous Tree Sign Board Fence Concrete Retaining Wall Stone Retaining Wall Monitoring Well Diameter Location of Elevations Centreline Property Line



Bearings are grid bearings, derived from the Southeastery Limit of Rideau Street on Registered Plan 6, shown to be N58°45'00"E and are referred to the Central Meridian of MTM Zone 9 (76°30' West Longitude) NAD-83 (original).

ELEVATION NOTES

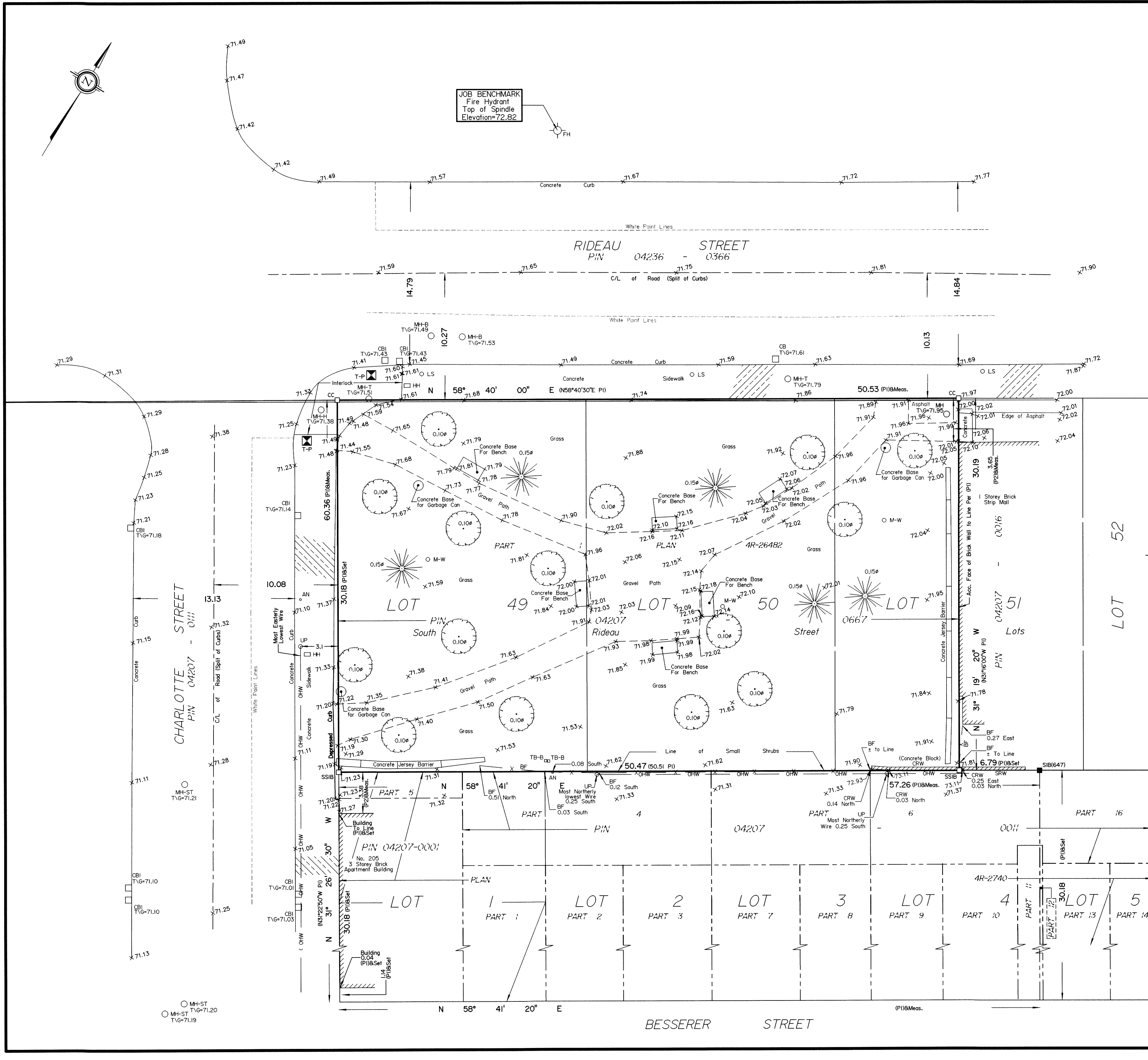
- 1. Elevations shown are geodetic and are referred to the CGVD28 geodetic datum. 2. It is the responsibility of the user of this information to verify that the job benchmark has not been altered or disturbed and that it's relative elevation and description agrees with the information shown on this drawing.

UTILITY NOTES

- 1. This drawing cannot be accepted as acknowledging all of the utilities and it will be the responsibility of the user to contact the respective utility authorities for confirmation. 2. Only visible surface utilities were located. 3. A field location of underground plant by the pertinent utility authority is mandatory before any work involving breaking ground, probing, excavating etc.

© Annis, O'Sullivan, Vollebek Ltd. 2016. THIS PLAN IS PROTECTED BY COPYRIGHT

ANNIS, O'SULLIVAN, VOLLEBEK LTD. 14 Concourse Gate, Suite 500 Nepean, Ont. K2E 7S6 Phone: (613) 727-0850 / Fax: (613) 727-1079 Email: Nepean@aovltd.com Ontario Land Surveyors Job No. 17054-16 Richcraft Lts49,50&P1L51 RP6 T F



Y:\2016\17054-16\FINAL\17054-16 Richcraft Lts49,50&P1L51 RP6 T F.dwg