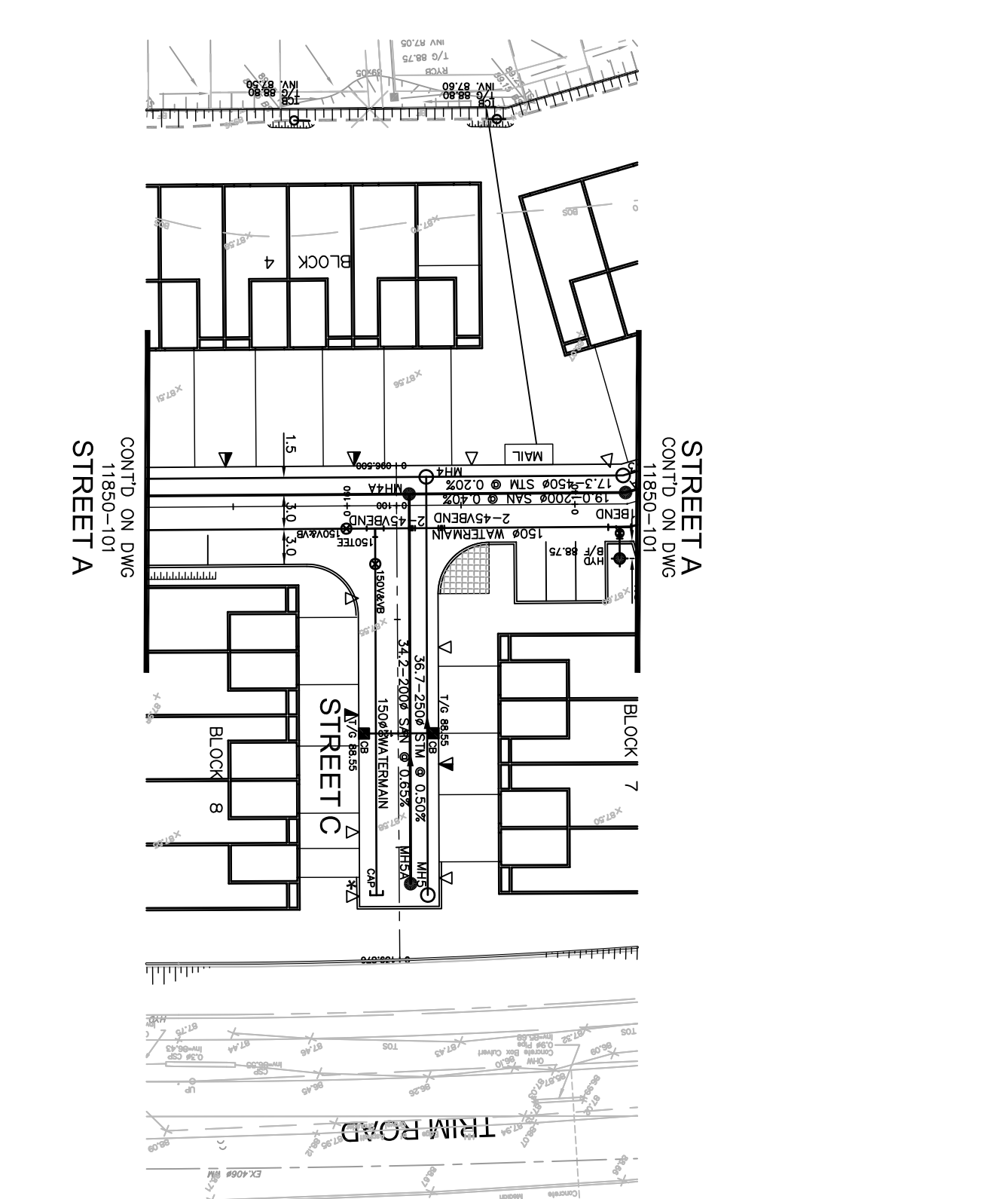
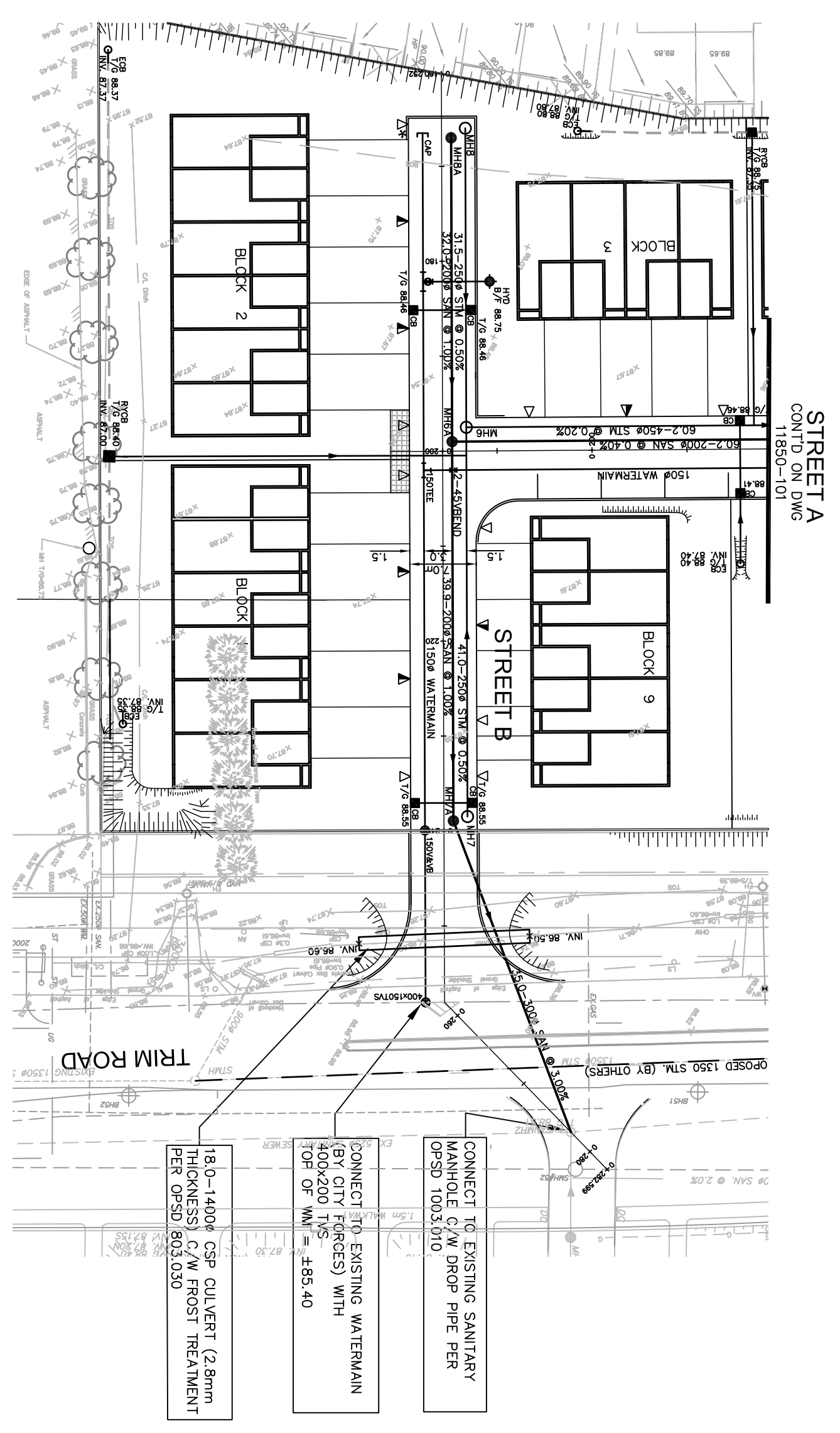
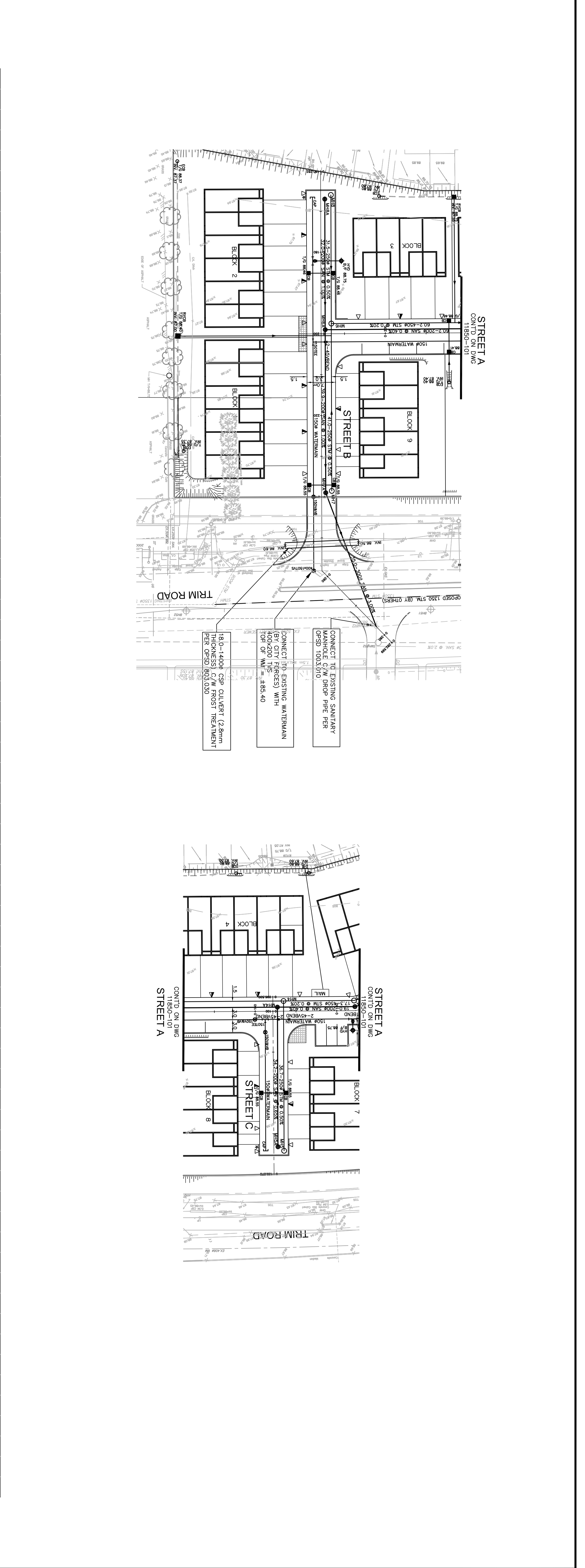
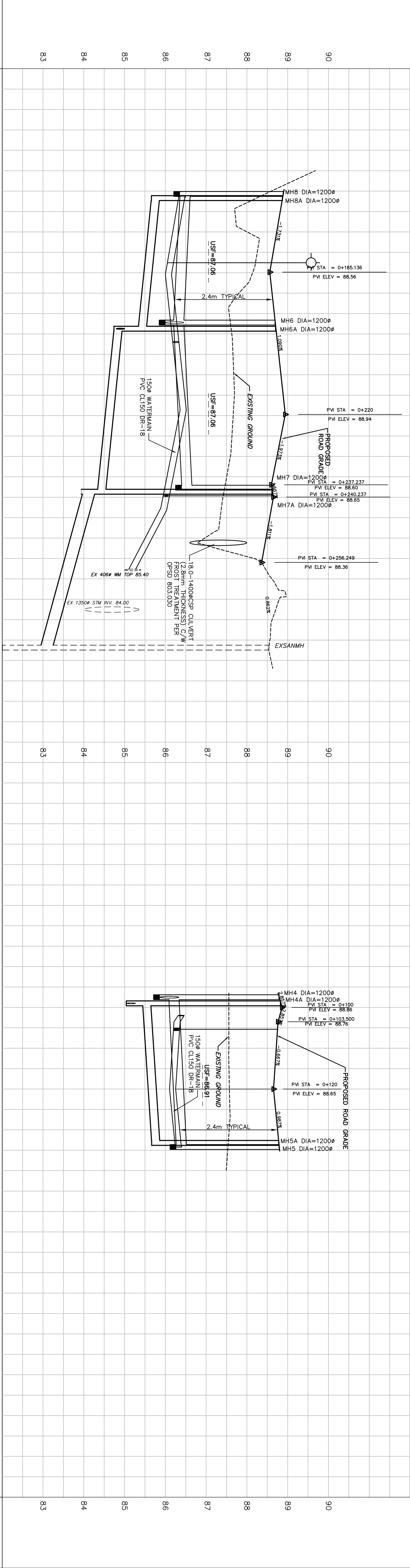


STATION	TOP OF WATERMAIN	ROAD GRADE	STW SEWER INVERT	SAN SEWER INVERT
0+160	88.822	86.422	32.0m-200# PVC SAN. SDR-35 @ 1.00%	150# CAP E85.854
0+166.50	88.822	86.422	32.0m-200# PVC SDR-35 @ 1.00%	150# CAP E85.854
0+180	88.822	86.422	32.0m-200# PVC SDR-35 @ 1.00%	150# CAP E85.854
0+182.14	88.822	86.422	32.0m-200# PVC SDR-35 @ 1.00%	150# CAP E85.854
0+200	88.822	86.422	32.0m-200# PVC SDR-35 @ 1.00%	150# CAP E85.854
0+202.01	88.822	86.422	32.0m-200# PVC SDR-35 @ 1.00%	150# CAP E85.854
0+220	88.822	86.422	32.0m-200# PVC SDR-35 @ 1.00%	150# CAP E85.854
0+239.94	88.822	86.422	32.0m-200# PVC SDR-35 @ 1.00%	150# CAP E85.854
0+240	88.822	86.422	32.0m-200# PVC SDR-35 @ 1.00%	150# CAP E85.854
0+260	88.822	86.422	32.0m-200# PVC SDR-35 @ 1.00%	150# CAP E85.854
0+280	88.822	86.422	32.0m-200# PVC SDR-35 @ 1.00%	150# CAP E85.854
0+100	88.860	86.460	35.7m-200# PVC SDR-35 @ 0.50%	150# CAP E85.882
0+102	88.860	86.460	35.7m-200# PVC SDR-35 @ 0.50%	150# CAP E85.882
0+105.113	88.860	86.460	35.7m-200# PVC SDR-35 @ 0.50%	150# CAP E85.882
0+120	88.860	86.460	35.7m-200# PVC SDR-35 @ 0.50%	150# CAP E85.882
0+134.202	88.860	86.460	35.7m-200# PVC SDR-35 @ 0.50%	150# CAP E85.882



Project No.	11850	Drawing No.	C-102
Design	R.P.K.	Date	MAY 09
Drawn	D.D.	Checked	T.R.B.

STREET B STREET C

Scale: HORIZ 1:500
VERT 1:50

Design: R.P.K.
Date: MAY 09

Drawn: D.D.
Checked: T.R.B.

KING'S POINTE PRIVATE

IBI GROUP
333 Preston Street
Ottawa, Ontario
Canada K1S 5N4
Tel: (613) 225-1311
Fax: (613) 225-9888

CLARENCE H.O.M.E.S.

No.	REVISIONS	By	Date
1	ISSUED FOR SITE PLAN APPROVAL		06/05/07
2			
3			
4			
5			
6			
7			
8			
9			
10			
11			
12			
13			
14			

- NOTES:**
- THE LOCATION OF EXISTING UTILITIES AND EXISTING MANHOLES ARE SHOWN ON THIS DRAWING. THE LOCATION SHOULD BE DETERMINED BY CONSULTING THE LOCAL AUTHORITY AND PRIVATE COMPANIES RESPONSIBLE FOR THE UTILITIES. THE CONTRACTOR SHALL BE RESPONSIBLE FOR ADEQUATE PROTECTION DURING CONSTRUCTION.
 - ALL SEWERS AND WATERMAIN TO BE AS PER CURRENT CITY OF OTTAWA STANDARDS AND SPECIFICATIONS. FOR ALL SEWERS TYPE "B" BEDDING TO BE PROVIDED.
 - ALL REQUIRED INSULATION TO BE INSTALLED TO CITY STANDARDS AND SPECIFICATIONS.
 - ALL CATCHBASIN LEADS TO BE 200mm DIAMETER PVC DR-35 @ 2.00% MIN. UNLESS OTHERWISE NOTED.
 - ALL REAR YARD CATCHBASIN LEADS TO BE 200mm DIAMETER PVC DR-35 @ 1.00% UNLESS OTHERWISE NOTED.
 - SEWER AVENUE STRUCTURE INFORMATION REFER TO DRAWING 11850-C-101.
 - ALL Voids INCLUDING BUILDING FOUNDATIONS REFER TO DRAWING 11850-C-101.
 - PROPOSED CUT OFF WALLS AS PER CITY STANDARD 58.
 - REFER TO DRAWING 11850-C-400 FOR SIZING OF INLET CONTROL DEVICES.