

GREENBANK ROAD ALLOWANCE BETWEEN CONCESSIONS 2 & 3 (RIDEAU FRONT)

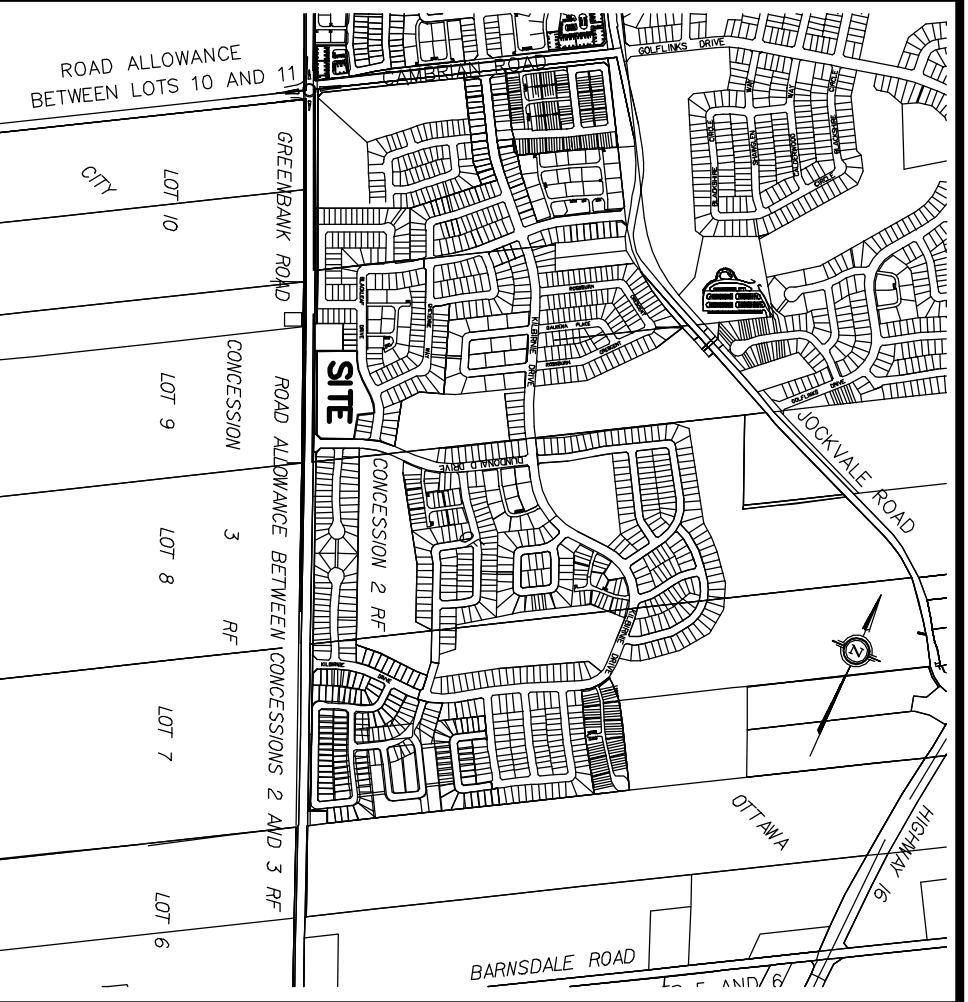
BLOCK 337
0.30 RESERVE

PART 9
PLAN 4R-22089
SUBJECT TO EASEMENT
NST. 07769598

BLOCK 138
ROAD WIDENING
P/N 04591-0296

NOTES :

- FINAL AS BUILT DIMENSIONS TO TOWNHOUSE UNITS MAY VARY FROM THOSE SHOWN.
- ALL ACCESS EASEMENTS HAVE A PERPENDICULAR WIDTH OF 1.5m AND ARE PARALLEL TO BLOCK LIMITS UNLESS OTHERWISE SHOWN ON THIS PLAN.
- SITE AREA = 2.076 Hectares (5.13 Acres)

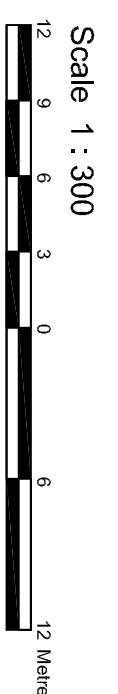


MONARCH CORPORATION
3584 Jockvale Road
OTTAWA (Nepean), ONTARIO, K2G 3H2

Monarch

**BLOCKS 331 And 332
REGISTERED PLAN 4M-
CITY OF OTTAWA**

Prepared by Annis, O'Sullivan, Vollbreck Ltd.



Metric DIMENSIONS SHOWN ON THIS PLAN ARE METRES AND CAN BE CONVERTED TO FEET BY DIVIDING BY 0.3048

BLOCK 331 - TOWNHOUSE UNITS = 11
BLOCK 332 - TOWNHOUSE UNITS = 56
TOTAL TOWNHOUSE UNITS = 67

BLOCK 332 - TOTAL VISITOR
PARKING SPACES = 9

SITE PLAN CONCEPT		
NO.	REVISION	DATE
1	PLAN PREPARED	JULY 12/2010
2	GENERAL REVISIONS	JULY 21/2010
3		
4		
5		
6		
7		

**TOWNHOUSE DEVELOPMENT
STONEBRIDGE
PHASE 11
CITY OF OTTAWA**

ANNIS, O'SULLIVAN, VOLLEBECK LTD.
14 Concession Road, Suite 600
Nepean, ON K2E 7S8
Phone: (613) 835-1200
Fax: (613) 835-1079
Land Surveyors (S) No. 1185-C-0, Member B.S. 33, 332, Ottawa Sp. 133

PART 7 PLAN 4R-22089
SUBJECT TO EASEMENT NST. 07769598

PART 1
PLAN 4R-44200
P/N 04591 - 0002

