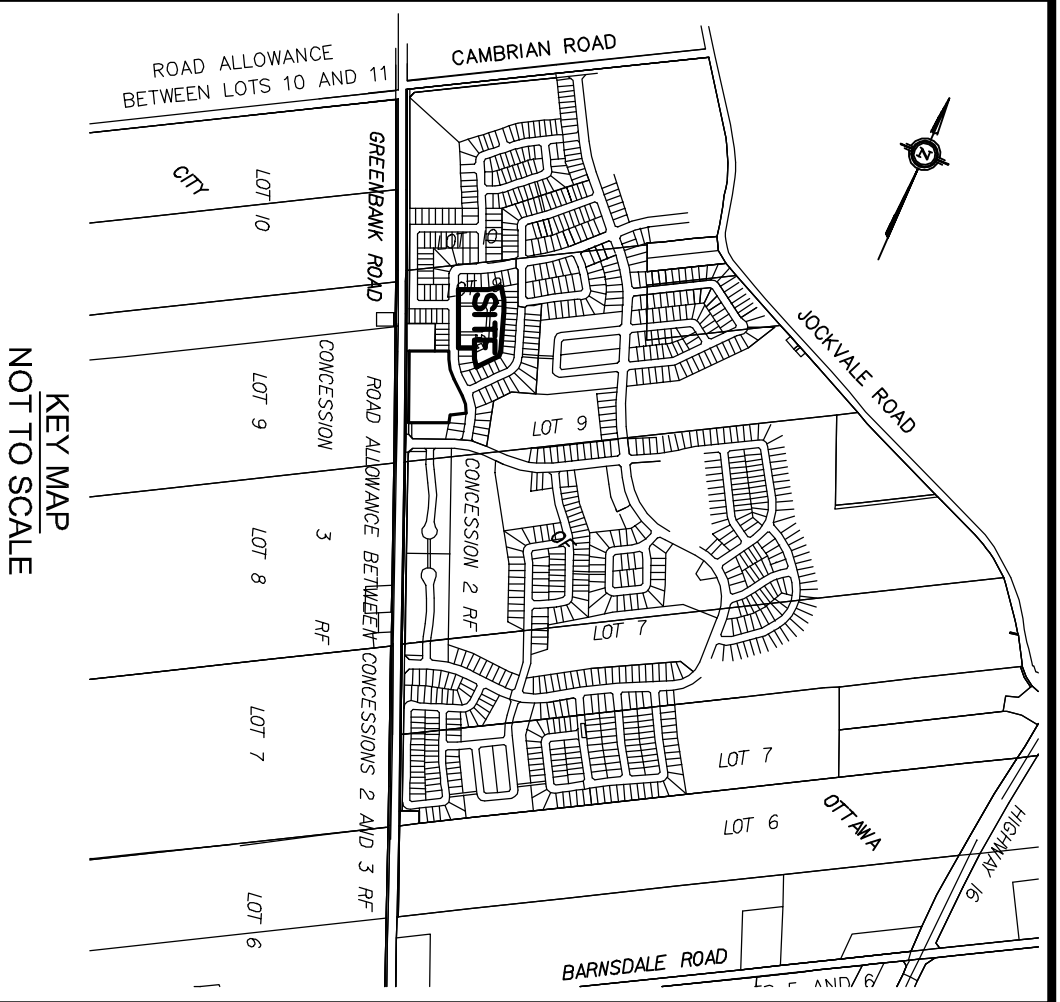


NOTES :

FINAL AS BUILT DIMENSIONS TO TOWNHOUSE UNITS MAY VARY FROM THOSE SHOWN.

ALL ACCESS EASEMENTS HAVE A PERPENDICULAR WIDTH OF 1.5m AND ARE PARALLEL TO BLOCK LIMITS UNLESS OTHERWISE SHOWN ON THIS PLAN.

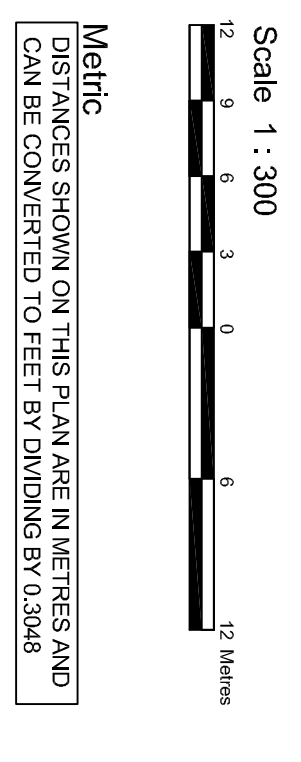
SITE AREA = 1.528 Hectares (3.78 Acres)



MONARCH CORPORATION
 3584 Jockvale Road
 DTTAVA (Nepean), ONTARIO, K2G 3H2

Monarch

BLOCK 333
REGISTERED PLAN 4M-
CITY OF OTTAWA
 Prepared by Annis, O'Sullivan, Vollebek Ltd.



TOTALS

TOWNHOUSE UNITS = 53

TOTAL UNITS = 53

VISITOR PARKING SPACES = 10

SITE PLAN CONCEPT

1	PLAN PREPARED	JULY 7/2010	N
2	ADDED 3 UNITS	JULY 19/2010	N
3	REVISION	DATE	N
4			
5			
6			
7			

TOWNHOUSE DEVELOPMENT
STONEBRIDGE
PHASE 11
CITY OF OTTAWA

ANNIS, O'SULLIVAN, VOLLEBEK LTD.
 17 Convent Drive, Suite 600
 Ottawa, Ontario K2E 7S8
 Phone: (613) 734-2727
 Fax: (613) 734-2729
 Land Surveyors (S) No. 1173-40-0000, B.S. 533, O.S. 4000, S.S. 22