

**WSP**  
 2611 QUEENSWAY DRIVE, SUITE 300  
 OTTAWA (ONTARIO) CANADA K2B 8K2  
 TELEPHONE: (613) 829-2800  
 FAX: (613) 829-8299  
 WWW.WSP-DESIGN.COM  
 PRODUCT NO.:

NO.	REV.	DATE	ISSUE
1	0	16/05/09	ISSUED FOR SITE PLAN APPLICATION
2	1	16/05/16	ISSUED FOR INTERNAL REVIEW

LES DESSINS, CONCEPTIONS ET PLANS MONTRES OU REPRESENTES PAR CE DESSIN APPARTIENNENT A EDWARD J. CUHACI AND ASSOCIATES ARCHITECTS INC ET/OU EDWARD J. CUHACI ET/OU LES UTILISERS DANS LE CADRE DU PRESENT PROJET. IL NE DOIT PAS ETRE UTILISE A D'AUTRES FINS NI COMMUNIQUE A QUICQU'IL SOIT SANS LA PERMISSION ECRITE DE EDWARD J. CUHACI AND ASSOCIATES ARCHITECTS INC.

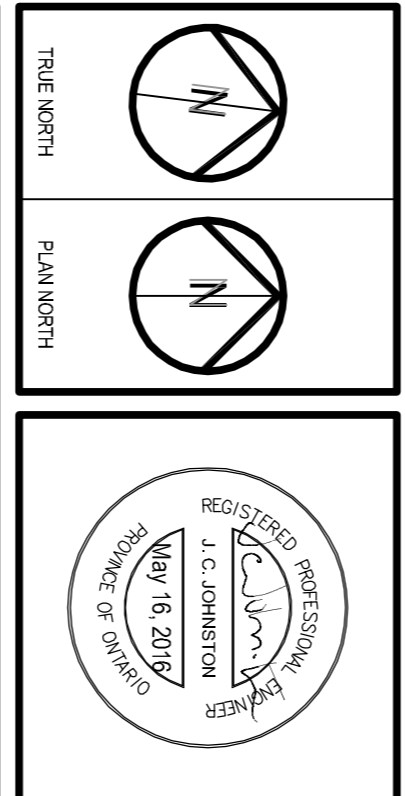
L'ARCHITECTE DECLINE TOUTE RESPONSABILITE DECOURANT DE PROBLEMES PRESENTS SUR UN NON-RESPECT DES PLANS ET/OU DES DESSINS. LE COMMANDETAIRE DOIT S'ASSURER QUE LES TRAVAS SONT EXECUTES EN CONFORMITE AVEC LES INSTRUCTIONS ET/OU LE DECRET DE L'ARCHITECTE. LE COMMANDETAIRE EST RESPONSABLE DE L'ARCHITECTE RELATIVEMENT AUX ERREURS, OMISSIONS, INCHANGEMENTS, AMBIGUITES OU CONTRADICTIONS ALLEEGES.

L'INTERPRETE DOIT VERIFIER TOUTES LES DIMENSIONS, SUR PLACE ET INFORMER L'ARCHITECTE DE TOUT ECART AVANT LE DEPART DES TRAVAUX. NE PAS MESURER LES DESSINS A LEGERELLE.

ALL IDEAS, DESIGN ARRANGEMENTS, AND PLANS INDICATED OR REPRESENTED BY THIS DRAWING ARE OWNED BY AND THE PROPERTY OF EDWARD J. CUHACI AND ASSOCIATES ARCHITECTS INC. THE DESIGNER ACCEPTS NO LIABILITY OR CONNECTION WITH THE SCHEDULED PROJECT AND/OR OF THE IDEAS, DESIGN, ARRANGEMENTS OR PLANS SHALL BE USED BY OR DISCLOSED TO ANY PERSON, FIRM OR CORPORATION FOR ANY PURPOSE WHATSOEVER WITHOUT THE WRITTEN PERMISSION OF EDWARD J. CUHACI AND ASSOCIATES ARCHITECTS INC.

THE ARCHITECT MAKES ANY AND ALL RESPONSIBILITY AND LIABILITY FOR PROBLEMS WHICH ARISE FROM FAILURE TO FOLLOW THESE PLANS, SPECIFICATIONS, AND THE FAILURE TO OBTAIN AND/OR FOLLOW THE ARCHITECT'S GUIDANCE WITH RESPECT TO ANY ERRORS, OMISSIONS, INCONSISTENCIES, AMBIGUITIES OR CONTRADICTIONS WHICH ARE ALLEEGED.

CONTRACTORS TO VERIFY ALL DIMENSIONS AND NOTIFY THE ARCHITECT OF ANY DISCREPANCIES BEFORE WORK COMMENCES. DO NOT SCALE DRAWINGS.



**EDWARD J. CUHACI & ASSOCIATES ARCHITECTS INC.**  
 1771 Silver St, Suite 100, Ottawa, Ontario, K1P 5H7  
 Fax: (613) 226-1944 Telephone: (613) 226-7153 Email: info@cuhaci.com

**REGISTERED PROFESSIONAL ENGINEER**  
 J. CUHACI  
 May 16, 2016  
 PROVINCE OF ONTARIO

**PRODUCT TITLE/ETRE DU PROJET**  
**ÉCOLE ÉLÉMENTAIRE CATHOLIQUE HORIZON-JEUNESSE 349 OLIVESTAD ST. OTTAWA, ON**  
**CONSEIL DES ÉCOLES CATHOLIQUES DU CENTRE-EST 4000, RUE LABELLE, OTTAWA, ON K1V 1A1**

**SERVICES PLAN - NORTH EAST**

PROJ. NO.	ISSUE NO.	REV. NO.
1514825200	2	1

SCALE: AS SHOWN  
 DRAWN BY: B.N.  
 CHECKED BY: J.J.  
 DATE:

**FORWARD FILE: 1604250200.dwg**  
**C010**

LOCATION	AREA (m²)	DEPTH (m)	VOLUME (m³)	CONTROL LOCATION	OVERFLOW ELEVATION
A	CB18	215	0.20	STMH3	64.27
B	CBM9	309	0.20	STMH3	64.27
C	CB17	171	0.20	STMH3	64.27
D	CB15	324	0.20	STMH3	64.27
E	CBM8	375	0.20	STMH3	64.27
F	CB16	285	0.20	STMH3	64.27
G	CB11	198	0.20	STMH3	64.27
H	CB10	250	0.20	STMH3	64.27
I	CB12	87	0.22	STMH3	64.27
J	CB8	110	0.20	STMH3	64.27
K	CB8	286	0.20	STMH3	64.27
L	CB6	494	0.30	STMH3	64.27
M	CB7	322	0.15	STMH3	64.27
N	CBM5	253	0.15	STMH3	64.27
O	DCB5	167	0.15	STMH3	64.27
P	CB4	80	0.15	STMH3	64.27
Q	CBM10	226	0.20	STMH3	63.63
R	CB2	219	0.19	STMH3	63.63
S	CB3	94	0.14	STMH3	63.63
T	CBM12	137	0.30	CBM12	63.32
U	CB22	174	0.30	CB22	63.10
V	CB19	256	0.30	CB19	62.87
W	CB20	276	0.30	CB20	63.31
X	CB21	200	0.30	CB21	63.19

**PONDING TABLE**  
 PONDING AREA AT CB8 IS USED FOR SNOW STORAGE. POND VOLUME AT THIS LOCATION IS THEREFORE NOT INCLUDED IN THE STORMWATER MANAGEMENT CALCULATIONS.

