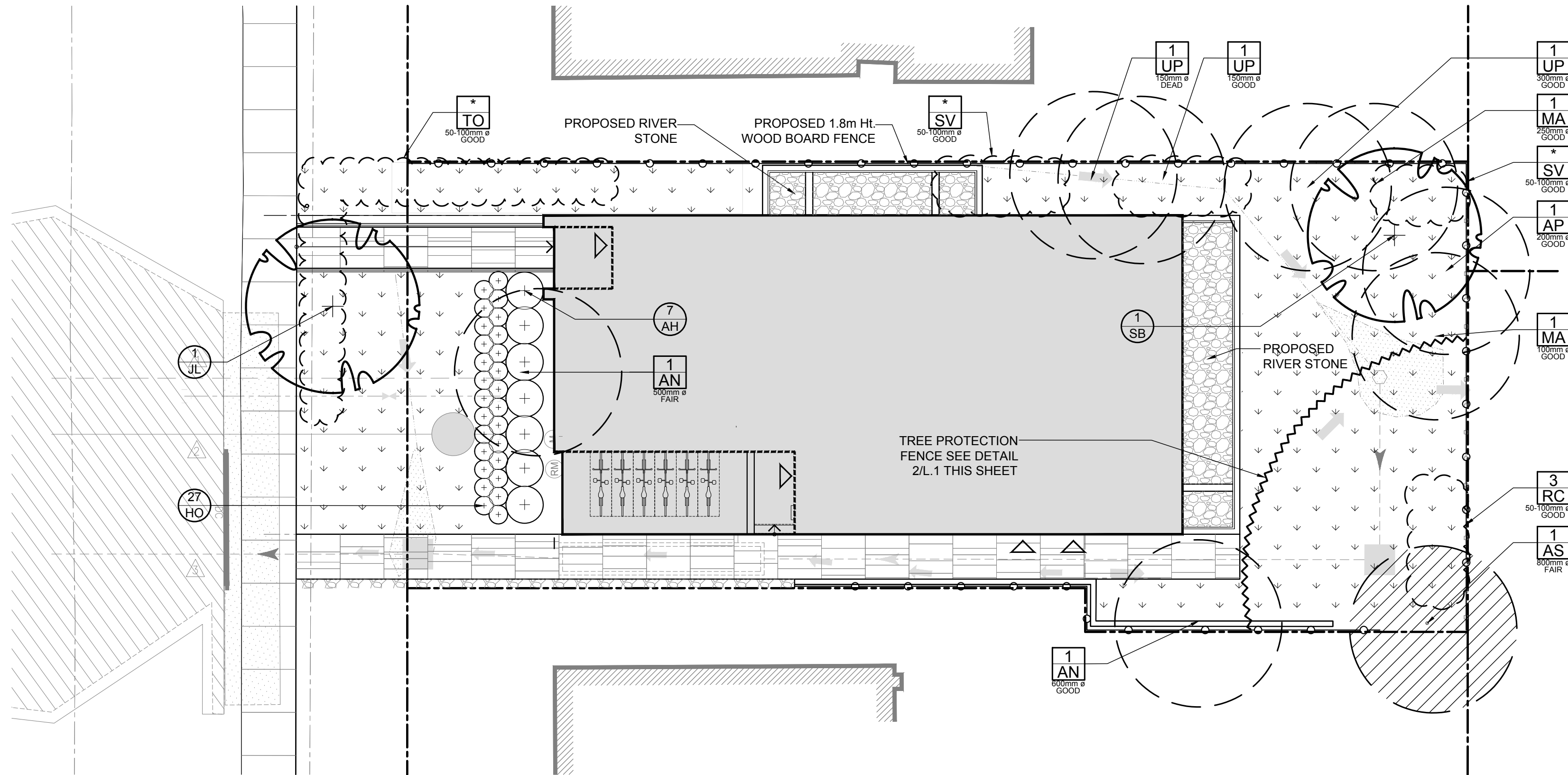


*[Signature]*

DOUGLAS JAMES, MCIP, RPP  
MANAGER, DEVELOPMENT REVIEW - CENTRAL  
PLANNING, INFRASTRUCTURE & ECONOMIC  
DEVELOPMENT DEPARTMENT, CITY OF OTTAWA

**APPROVED**  
By Jamesdo at 2:40 pm, Aug 07, 2019



1  
L.1  
TREE CONSERVATION REPORT & LANDSCAPE PLAN  
SCALE 1:100

EXISTING TREE LIST						
<div><div>QTY</div><div>KEY</div></div>						
KEY	QTY.	BOTANICAL NAME	COMMON NAME	SIZE	CONDITION	REMARKS
TREES						
AN	2	Acer negundo	Manitoba Maple	500-600mm DBH	FAIR-GOOD	SEE PLAN
AP	1	Acer platanoides	Norway Maple	200mm DBH	GOOD	SEE PLAN
AS	1	Acer saccharinum	Silver Maple	800mm DBH	FAIR	SEE PLAN
UP	3	Ulmus pumila	Siberian Elm	150-300mm DBH	DEAD-GOOD	SEE PLAN
MA	2	Malus sp.	Crabapple	100-250mm DBH	GOOD	SEE PLAN
RC	3	Rhamnus cathartica	Common Buckthorn	50-100mm DBH	GOOD	SEE PLAN
SV	*	Syringa vulgaris	Common Purple Lilac	50-100mm DBH	GOOD	SEE PLAN
TO	*	Thuja occidentalis	Eastern White Cedar	50-100mm DBH	GOOD	SEE PLAN

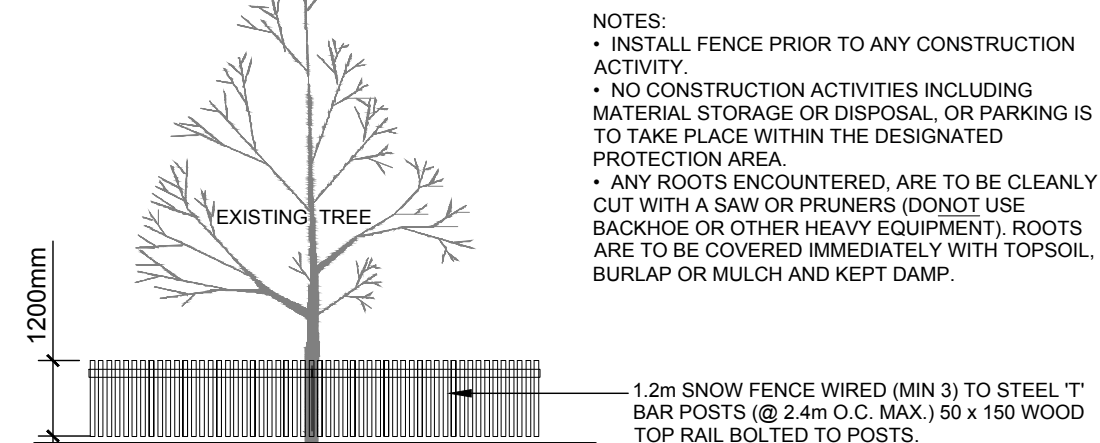
\*DENOTES A CLUSTER

PROPOSED PLANT LIST				QTY. KEY		
KEY	QTY.	BOTANICAL NAME	COMMON NAME	SIZE	CONDITION	REMARKS
TREES						
JL	1	Syringa reticulata	Japanese Tree Lilac	60mm cal.	B&B	Branching at 1.8m Ht.
SB	1	Amelanchier canadensis	Serviceberry	60mm cal.	B&B	
SHRUBS						
AH	7	Hydrangea arborescens 'Annabelle'	Annabelle Hydrangea	1. Gal Pot	Potted	800 mm o.c.
PERENNIALS						
HO	27	Hosta 'Royal Standard'	Royal Standard Hosta	100mm pot	Potted	400 mm o.c.

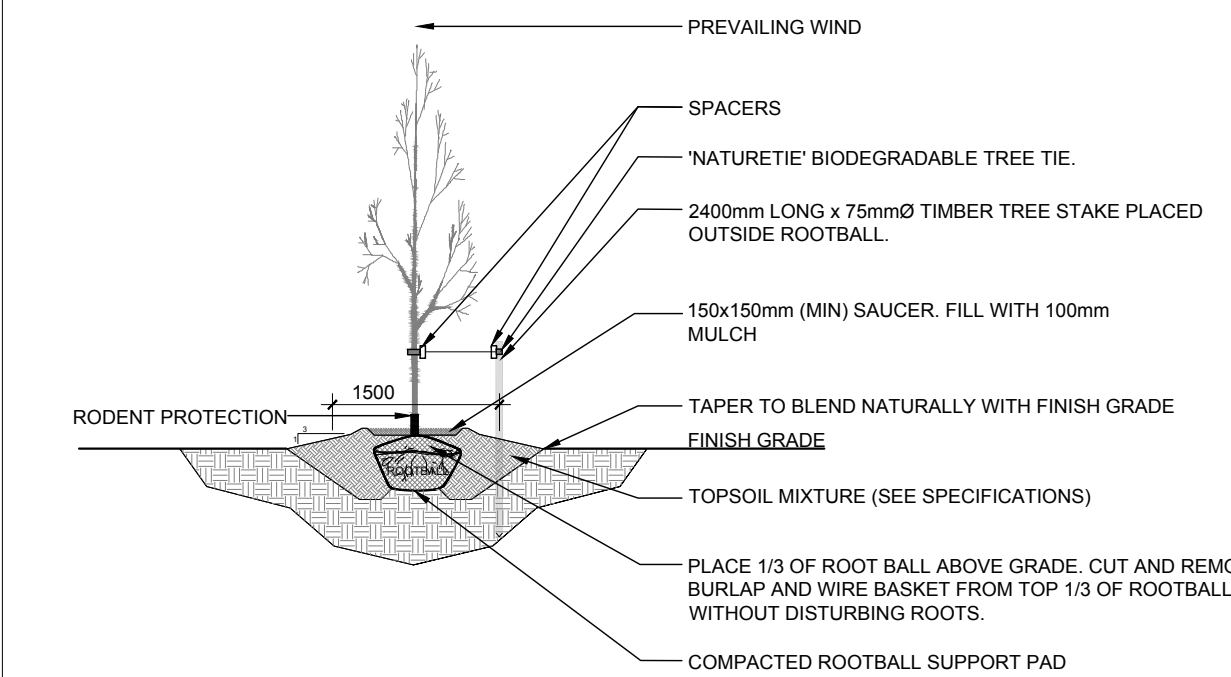
#### GENERAL NOTES:

- It is the responsibility of the appropriate contractor or official to report any errors, omissions or discrepancies on this plan with actual site conditions to the Landscape Architect before proceeding with construction.
- The contractor is to notify all utility companies and authorities prior to any excavation and ascertain locations of underground services.
- The contractor is to reinstate all areas and items damaged as a result of construction activity.
- The contractor is to comply with all pertinent codes and by-laws.
- The contractor is to maintain a positive surface run-off throughout the entire construction period.
- The Landscape Architect is not responsible for subsurface conditions.
- The contractor is to identify all existing trees to remain on site with the Landscape Architect prior to construction.
- The contractor is to stake the proposed location of all plant material in conjunction with the Landscape Architect prior to excavation.
- Minimum distances for selected deciduous trees are as follows:
  - Building Foundations 7.5m
  - Sidewalks 1.5m
  - Public Streets 2.5m
  - Underground Infrastructure 2.0m
- All trees within 1m of underground utility trenches are to be excavated by hand.
- Remove all protective wrapping from tree trunks after installation.
- Staking of trees shall only be performed if necessary.
- Ensure that mulch is pulled back a min. distance of 75mm from base of tree trunk.

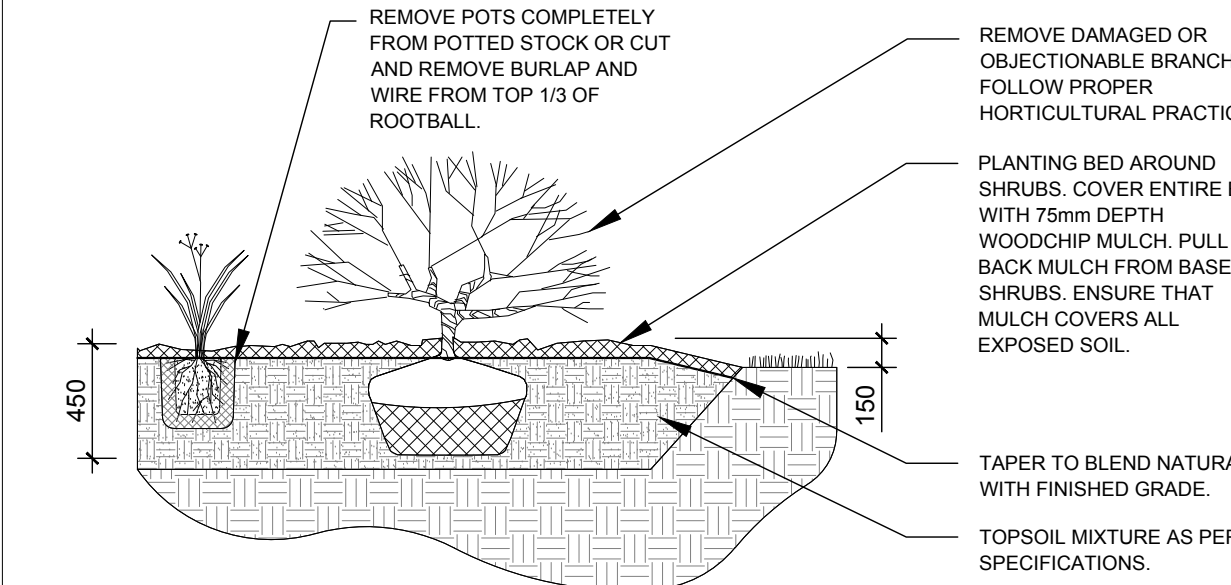
- PROTECTION MEASURES TO BE TAKEN DURING CONSTRUCTION:
- UNDER THE GUIDANCE OF AN ARBORIST, ERECT A FENCE AT THE CRITICAL ROOT ZONE (CRZ) OF TREES WHERE THE CRZ IS ESTABLISHED AS BEING 10 CENTIMETRES FROM THE TRUNK OF A TREE FOR EVERY CENTIMETRE OF TRUNK DIAMETER AT BREAST HEIGHT. THE CRZ IS CALCULATED AS DBH X 10 CM.
  - DO NOT PLACE ANY MATERIAL OR EQUIPMENT WITHIN THE CRZ OF THE TREE
  - DO NOT ATTACH ANY SIGNS, NOTICES OR POSTERS TO ANY TREE;
  - DO NOT RAISE OR LOWER THE EXISTING GRADE WITHIN THE CRZ WITHOUT APPROVAL;
  - TUNNEL OR BORE WHEN DIGGING WITHIN THE CRZ OF A TREE;
  - DO NOT DAMAGE THE ROOT SYSTEM, TRUNK, OR BRANCHES OR ANY TREE;
  - ENSURE THAT EXHAUST FUMES FROM ALL EQUIPMENT ARE NOT DIRECTED TOWARDS ANY TREE CANOPY.



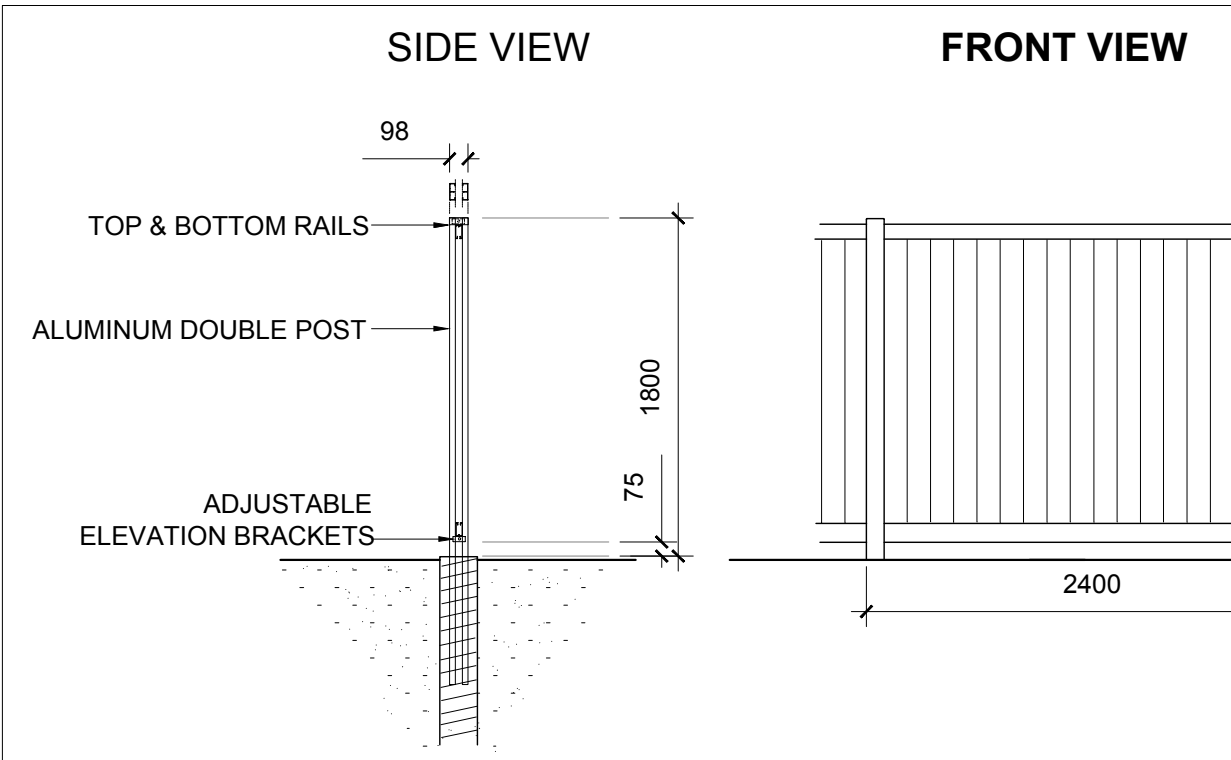
2  
L.1  
TREE PROTECTION FENCE  
SCALE: NTS



3  
L.1  
DECIDUOUS TREE PLANTING  
SCALE: NTS



4  
L.1  
SHRUB / PERENNIAL PLANTING  
SCALE: NTS



5  
L.1  
1.8m Ht. WOOD SCREEN FENCE  
SCALE: NTS

CLIENT:  
CLIENT: **TC UNITED GROUP**  
  
1800 INDUSTRIAL AVE, UNIT 9  
OTTAWA, ON  
Tel.: (613) 680-5582

CONSULTANTS  
  
ARCHITECTS: **project1 studio**  
Project 1 Studio Incorporated  
(613) 884-3039 / info@project1studio.ca

CIVIL ENGINEERS:  
  
**DSEL LTD.**  
  
120 IBER ROAD, SUITE 103  
OTTAWA, ON  
Tel.: (613) 836-0856

SURVEYORS:  
  
**ANNIS, O'SULLIVAN, VOLLEBEKK LTD.**  
14 Concourse Gate, Suite 500  
Brimley, Ont. M2E 1S6  
Phone: (613) 727-0880 / Fax: (613) 727-1079  
Email: hopen@anniso.com  
316 Somerset Lt

LEGEND	
	EXISTING TREE TO BE REMOVED
	GROUP OF EXISTING TREES TO BE REMOVED
	EXISTING TREE TO REMAIN
	PROPOSED DECIDUOUS TREE
	PROPOSED SHRUBS / PERENNIALS
	PROPOSED RIVER STONE
	PROPOSED SOD
	1.8m Ht. WOOD BOARD FENCE
	TREE PROTECTION FENCE

6	REVISED PER FORESTRY COMMENTS	05/31/2019	ML	JL
5	ISSUED FOR MYLARS	03/08/2019	ML	JL
4	REVISED PER CITY COMMENTS	30/01/2019	ML	JL
3	REVISED PER NEW SITE PLAN	09/12/2018	ML	JL
2	REVISED PER NEW SITE PLAN	08/29/2018	ML	JL
1	ISSUED FOR SITE PLAN CONTROL	04/06/2018	ML	JL
No.	Issue	Date	Issue	DR CK

**JAMES B. LENNOX & ASSOCIATES INC.**  
**LANDSCAPE ARCHITECTS**  
3332 CARLING AVE. OTTAWA, ONTARIO K2H 5A8  
Tel. (613) 722-5168 Fax. (866) 343-3942

PROJECT  
  
NEW 3 STOREY APARTMENT BUILDING  
  
316 SOMERSET STREET EAST, OTTAWA ON

DRAWING  
  
TREE CONSERVATION REPORT &  
LANDSCAPE PLAN

STAMP	SCALE
	AS SHOWN
	START DATE
	FEBRUARY 2018
	PROJECT NO.
	18-MIS-1855

PROJECT NORTH	DRAWING NO.
	L.1
	PLOT SIZE ARCH-D