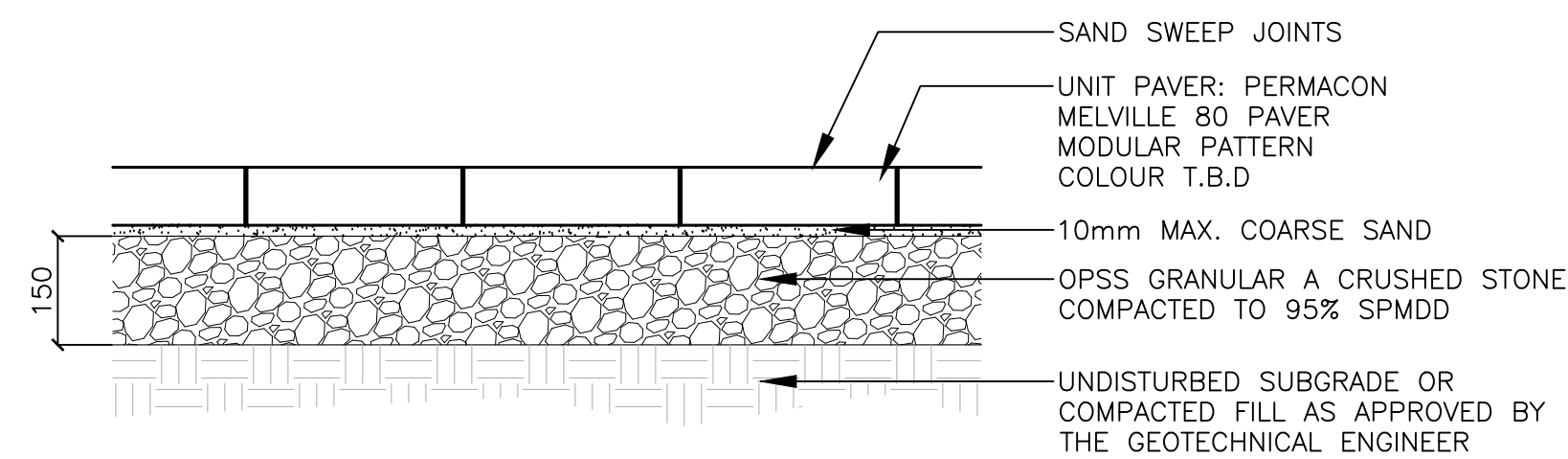


NOTES:
1. REFER TO DRAWINGS FOR JOINT LAYOUT
2. SAWCUT WITHIN 48 HOURS OF POUR
3. NO TOOLED EDGES

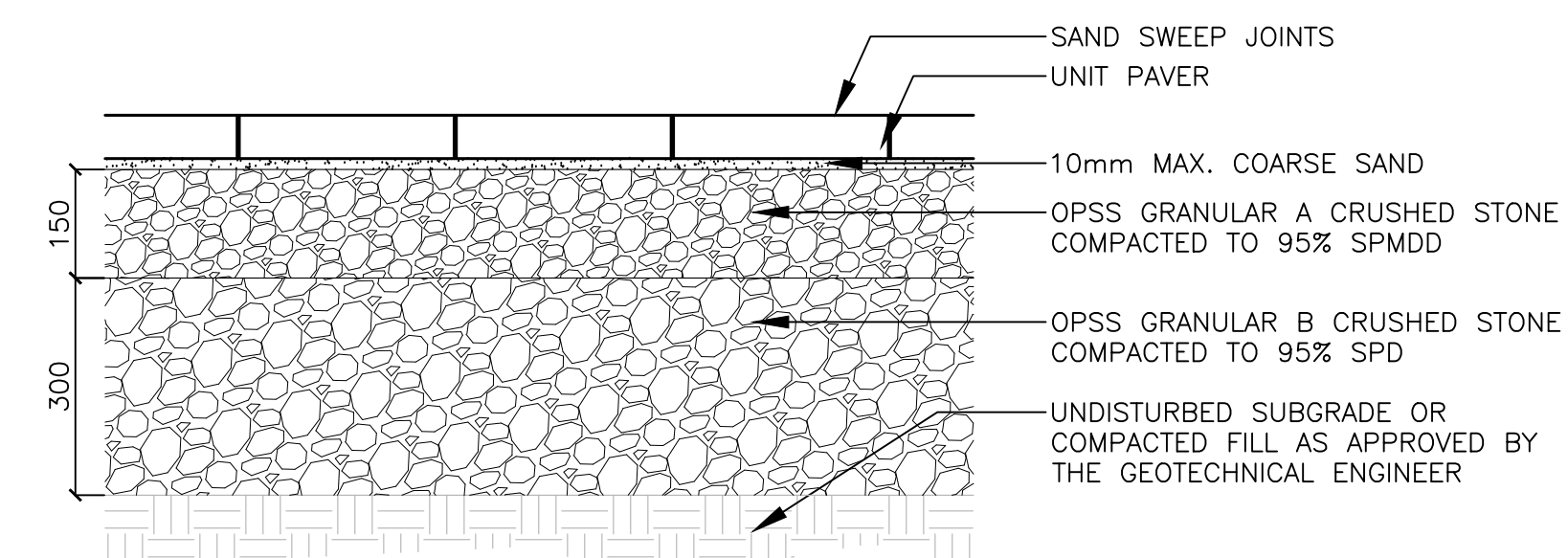
NOTES:
1. REFER TO DRAWINGS FOR JOINT LAYOUT
2. ALL STEEL DOWELS TO BE EPOXY - COATED
3. NO TOOLED EDGES

1 CONCRETE PAVING Scale 1:10



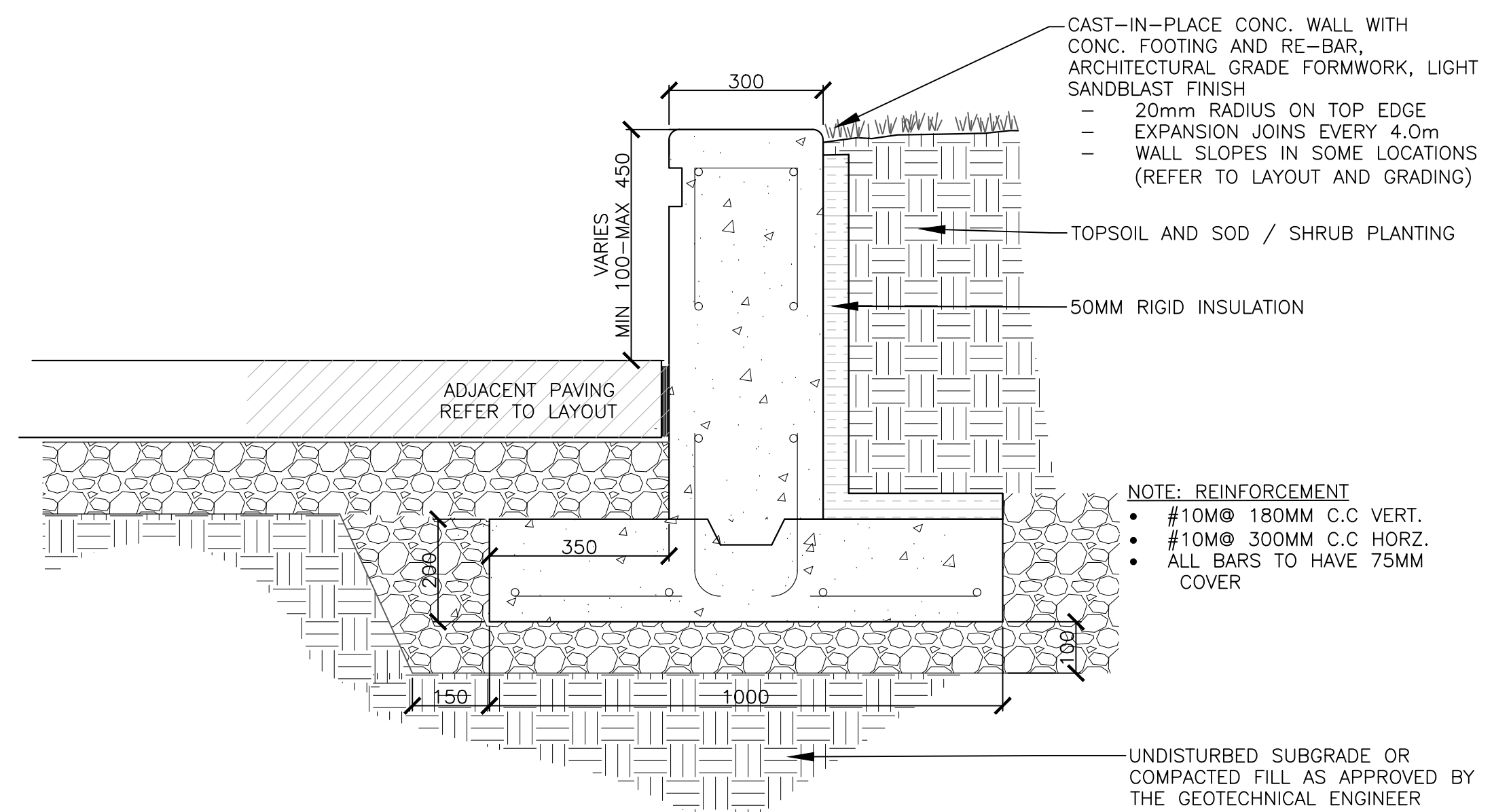
UNIT PAVING NOTES:
- MELVILLE 80 UNIT PAVERS BY PERMACON
- MODULAR PATTERN
- COLOUR T.B.D

2a UNIT PAVING - PEDESTRIAN Scale 1:10



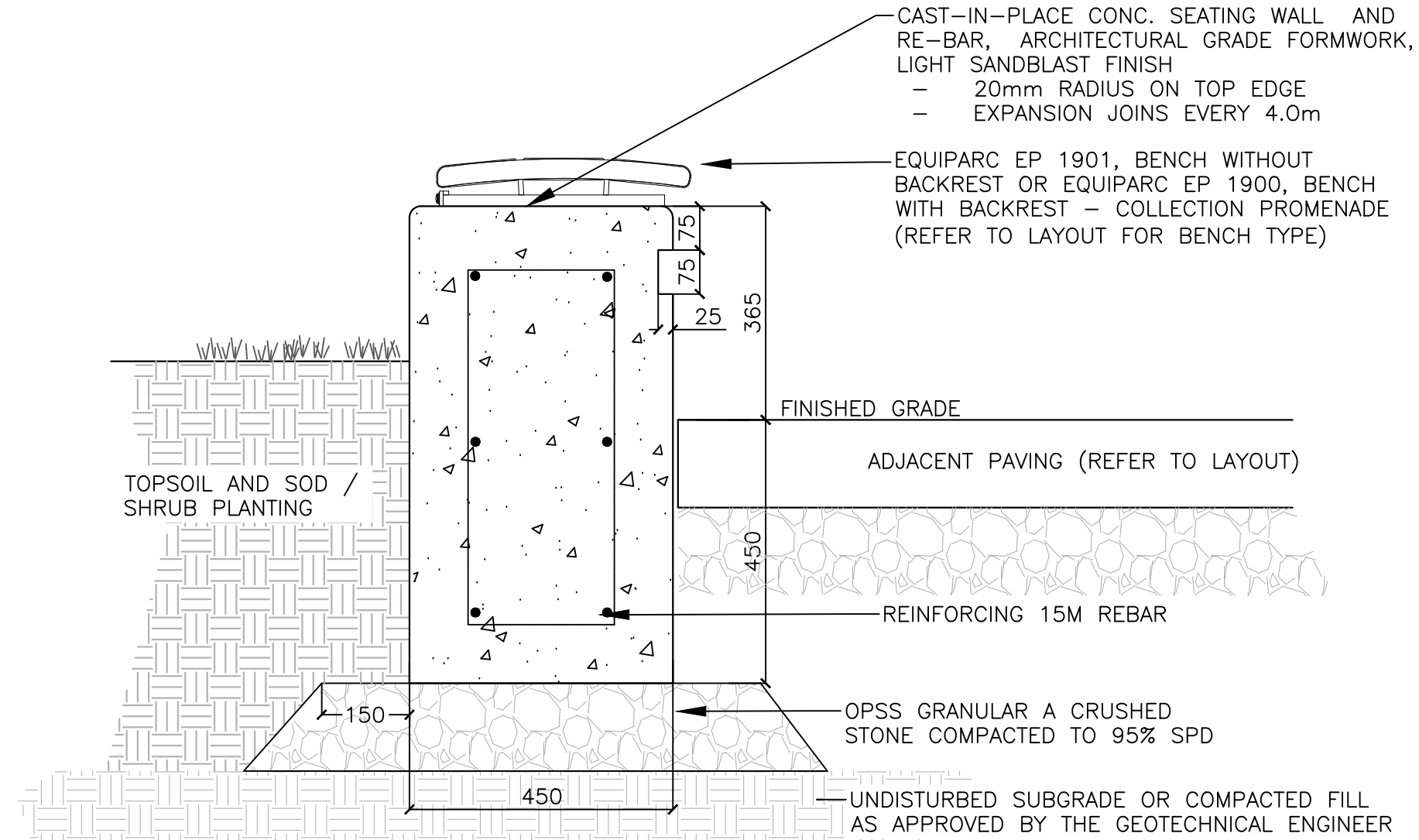
UNIT PAVING NOTES:
- MELVILLE 80 UNIT PAVERS BY PERMACON
- MODULAR PATTERN
- COLOUR T.B.D

2b UNIT PAVING - VEHICULAR Scale 1:10

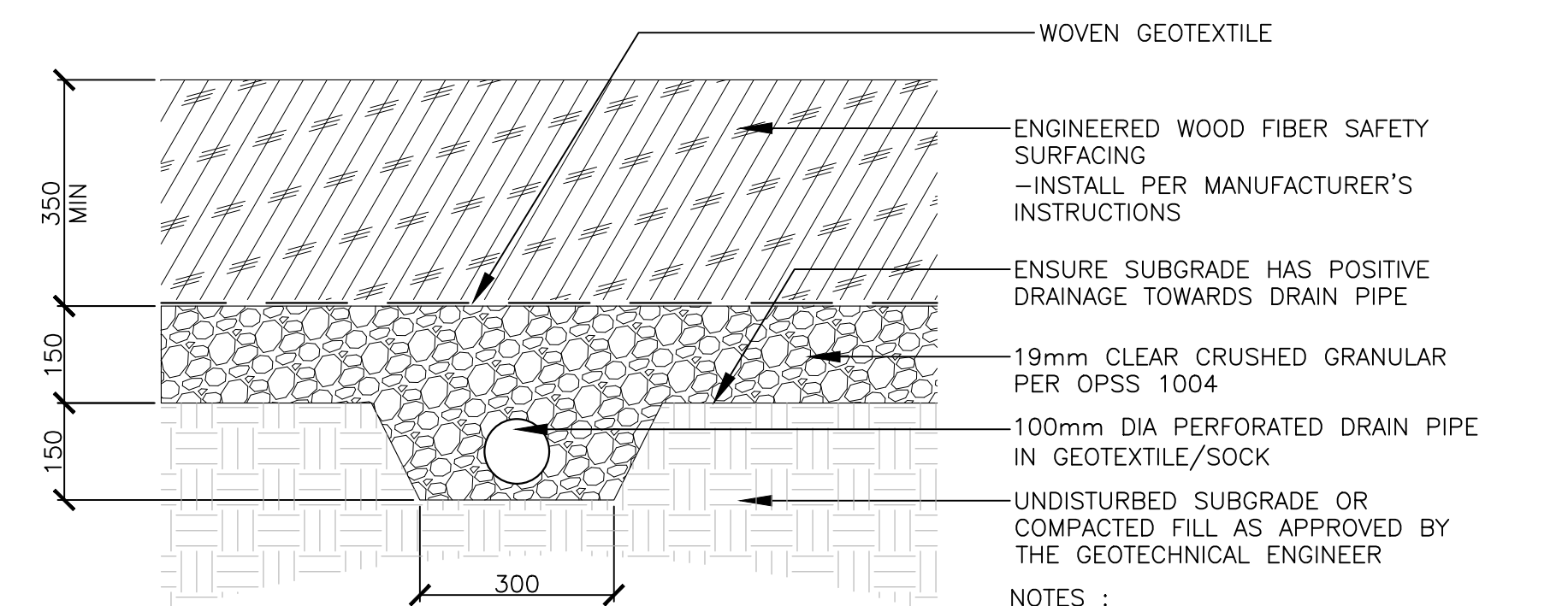


NOTE: REINFORCEMENT
• #10M@ 180MM C.C VERT.
• #10M@ 300MM C.C HORZ.
• ALL BARS TO HAVE 75MM COVER

3 CAST-IN-PLACE CONCRETE RETAINING WALL Scale 1:10



4 C.I.P. CONCRETE PLANTER WALL WITH BENCH SEATING Scale 1:10

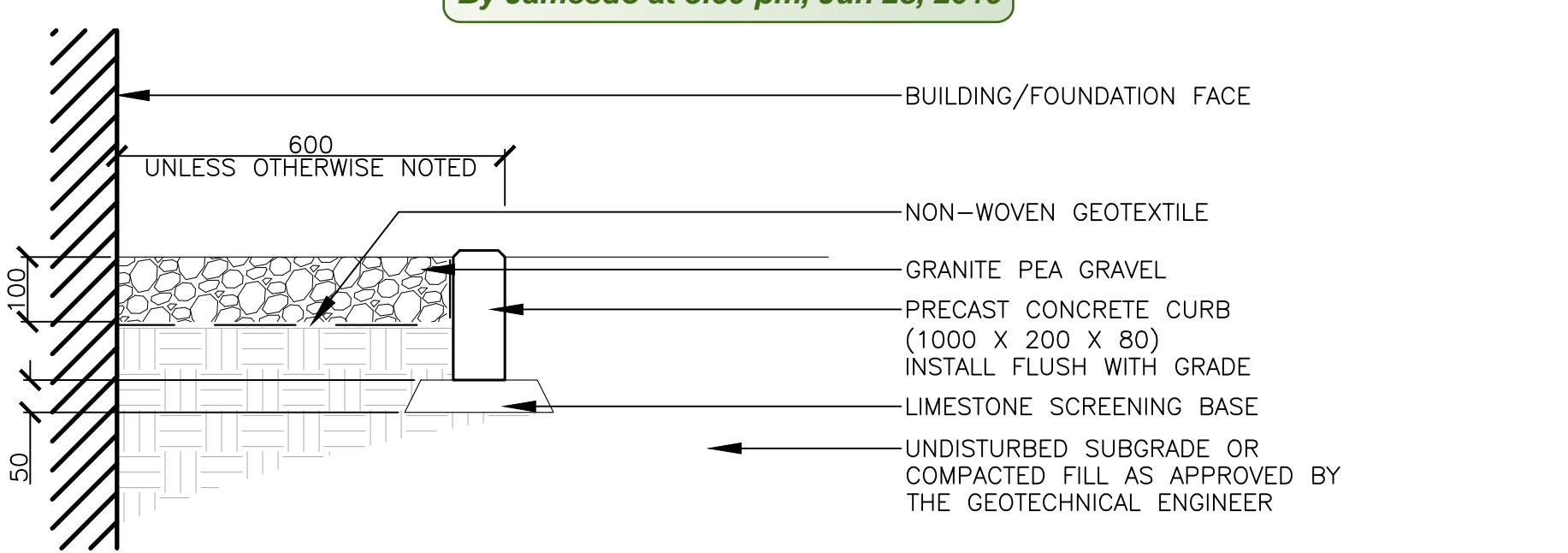


NOTES:
• EXCAVATION AND SUBGRADE CONDITION TO BE REVIEWED BY GEOTECHNICAL ENGINEER
• ENSURE DRAIN PIPE HAS POSITIVE SLOPE TO OUTFALL

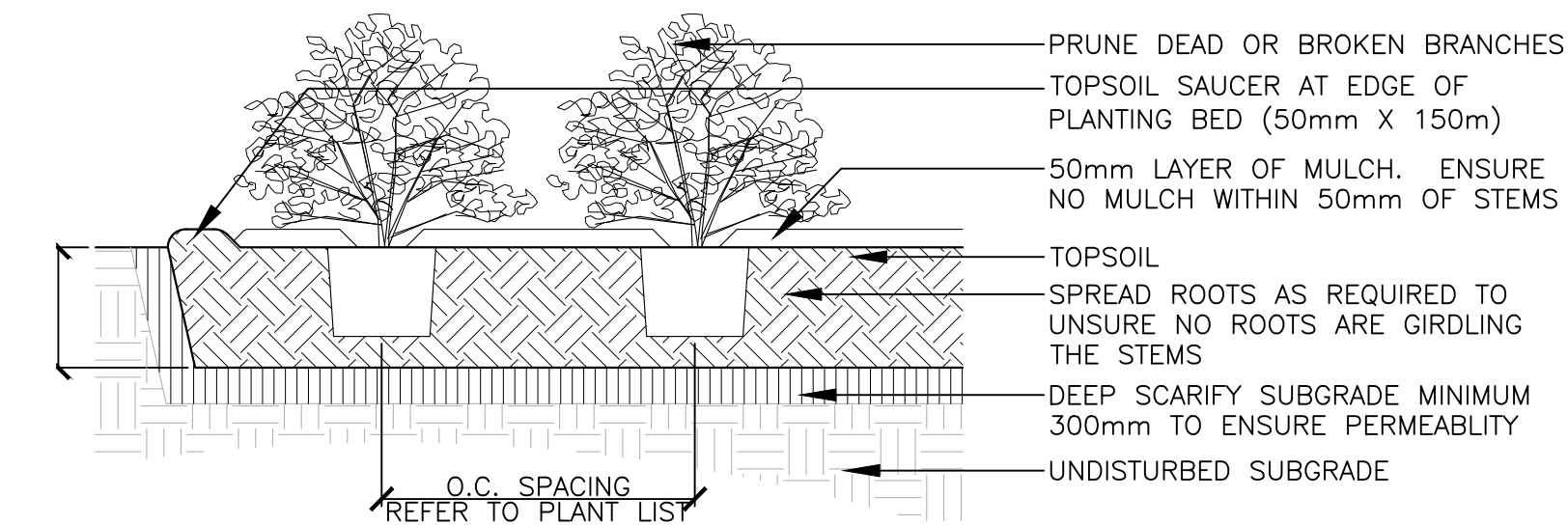
5 ENGINEERED WOOD FIBRE PLAY SURFACE Scale 1:10

Douglas James
DOUGLAS JAMES, MCIP, RPP
MANAGER, DEVELOPMENT REVIEW - CENTRAL PLANNING, INFRASTRUCTURE & ECONOMIC DEVELOPMENT DEPARTMENT, CITY OF OTTAWA

APPROVED
By Jamesdo at 3:50 pm, Jun 28, 2019

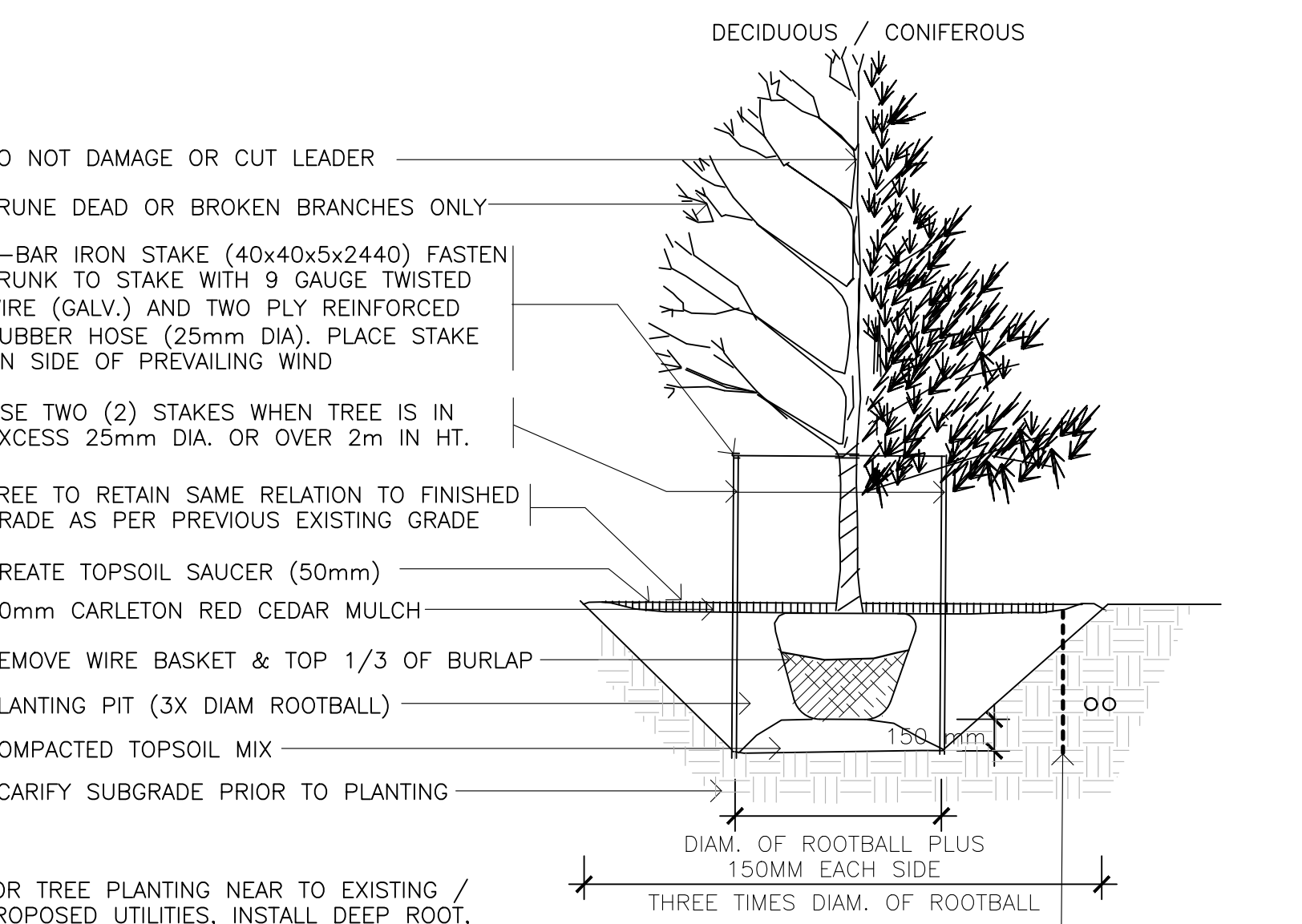


6 MAINTENANCE EDGE Scale 1:10



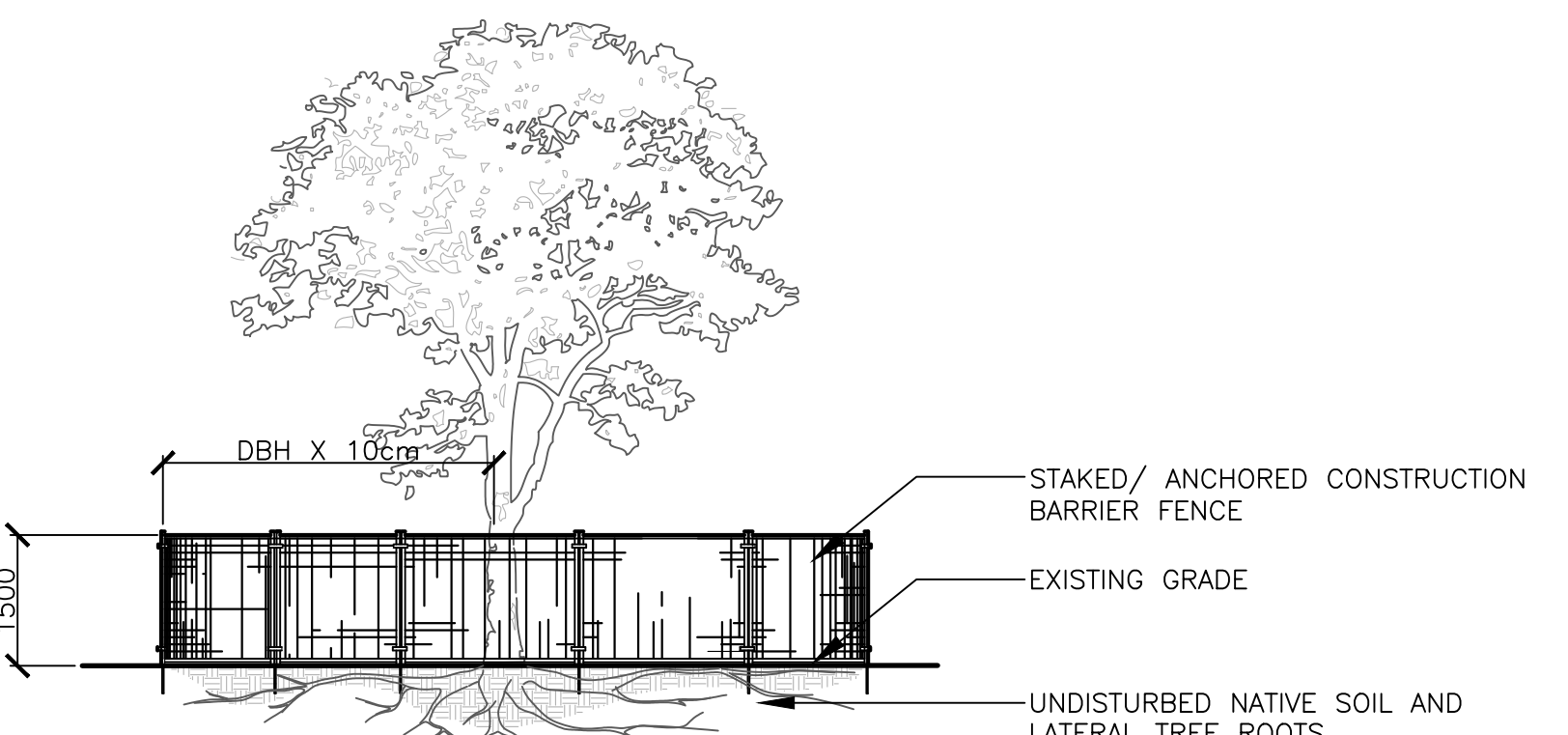
NOTES:
• TOP OF ROOT BALL TO RETAIN SAME ELEVATION AS GROWING CONDITIONS

7 SHRUB PLANTING (TYPICAL) Scale 1:30



NOTE: FOR SMALL TREE PLANTING NEAR TO PROPOSED STORM WATER STORAGE TANKS, INCLUDE 'DEEP ROOT' POLYETHYLENE GEOMEMBRANE, 1.02mm THICK X 122cm WIDE ROLL, ALL JOINTS SEALED AS PER MANUFACTURERS INSTRUCTIONS. MEMBRANE TO COVER ENTIRE SURFACE OF STORM TANKS AND EXTEND 1.2m DOWN TANK SIDES.

8 TREE PLANTING (TYPICAL) Scale 1:50



NOTES:
THE FOLLOWING PROTECTION MEASURES MUST BE IMPLEMENTED FOR RETAINED TREES, BOTH ON SITE AND ADJACENT SITES, PRIOR TO ANY TREE REMOVAL OR SITE WORKS AND MAINTAINED FOR THE DURATION OF CONSTRUCTION ON SITE.
1. UNDER THE GUIDANCE OF AN ARBORIST, ERECT A FENCE AT THE CRITICAL ROOT ZONE (CRZ) OF TREES WHERE THE CRZ IS ESTABLISHED AS BEING 10 CENTIMETERS FROM THE TRUNK FOR EVERY CENTIMETER OF TRUNK DIAMETER AT BREST HEIGHT. THE CRZ IS CALCULATED AS DBH X 10cm.
2. DO NOT PLACE ANY MATERIAL OR EQUIPMENT WITHIN THE CRZ OF THE TREE
3. DO NOT ATTACH ANY SIGNS, NOTICES OR POSTERS TO ANY TREE
4. DO NOT RAISE OR LOWER THE GRADE WITHIN THE CRZ WITHOUT APPROVAL
5. TUNNEL OR BORE WHEN DIGGING WITHIN THE CRZ OF A TREE
6. DO NOT DAMAGE THE ROOT SYSTEM, TRUNK, OR BRANCHES OF ANY TREE
7. ENSURE THAT EXHAUST FUMES FROM ALL EQUIPMENT ARE NOT DIRECTED TOWARDS ANY TREE CANOPY

9 TREE PROTECTION (TYPICAL) Scale 1:50



Client: Ottawa Community Housing

no.	date	revision
02	02.22.19	Re-issued for SPA
01	03.12.18	Issued for SPA

It is the responsibility of the appropriate contractor to check and verify all dimensions on site and report all errors and/or omissions to the architect.

All contractors must comply with all pertinent codes and by-laws.

Do not scale drawings.
This drawing may not be used for construction until signed.

Copyright reserved.



Hobin Architecture Incorporated
63 Pamela Street
Ottawa, Ontario
Canada K1S 3K7
T: 613-238-7200
F: 613-235-2805
E: mail@hobinarc.com
hobinarc.com

PROJECT/LOCATION:
811 Gladstone Affordable Housing
811 Gladstone Ottawa, ON

DRAWING TITLE:
Landscape Details

DRAWN BY: SE	DATE: Nov 2018	SCALE: As Shown
PROJECT: 2008-01		DRAWING NO.:
L2.0		REVISION NO.:

D02-02-18-0107 & D07-12-18-0181