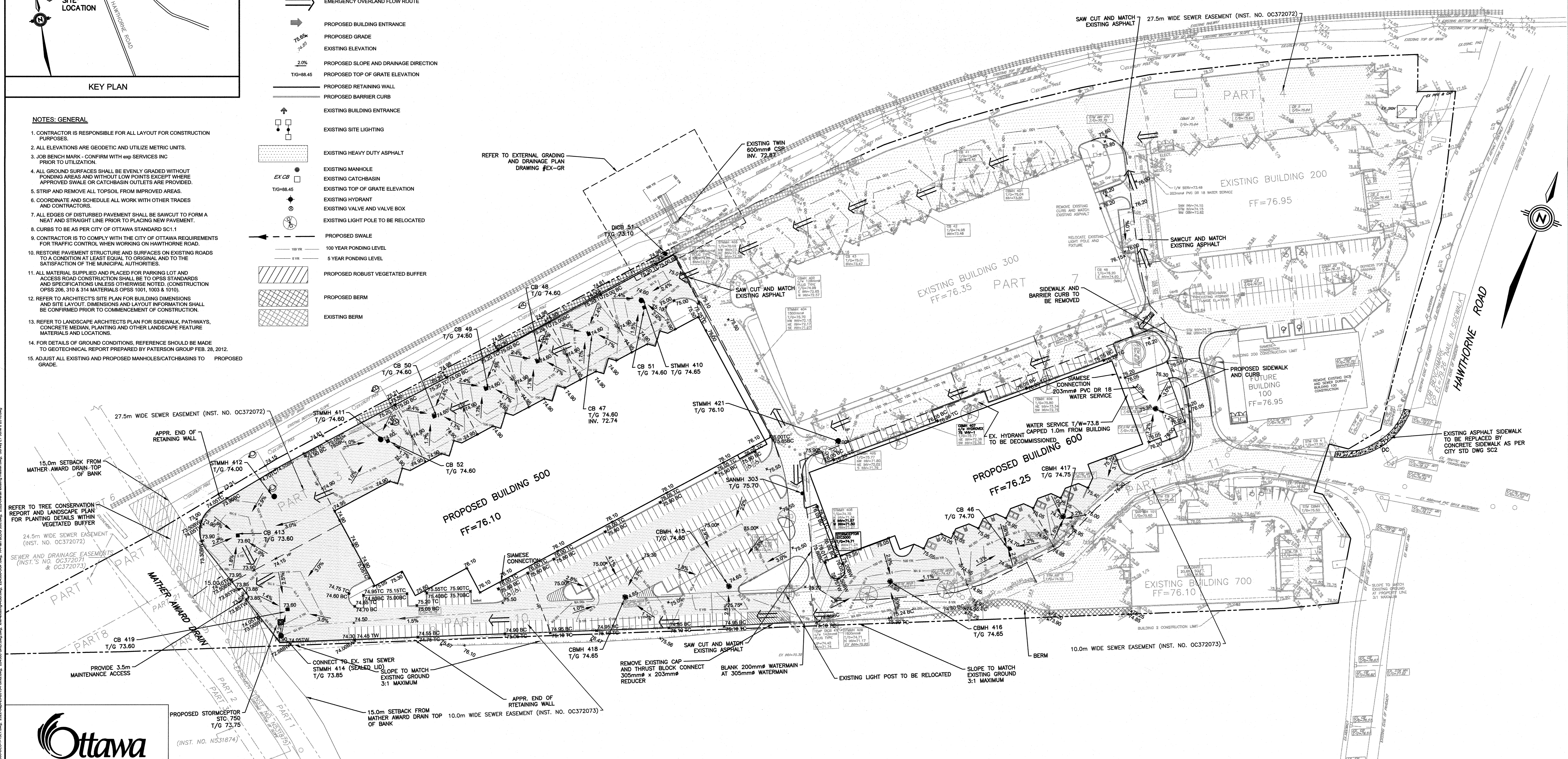
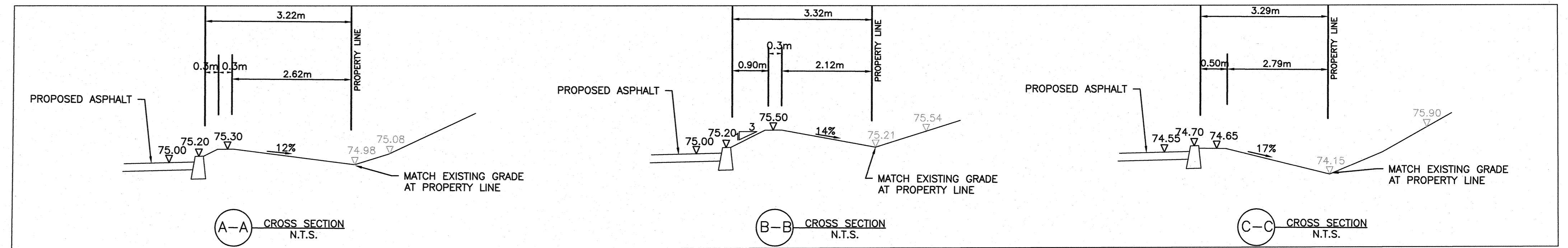
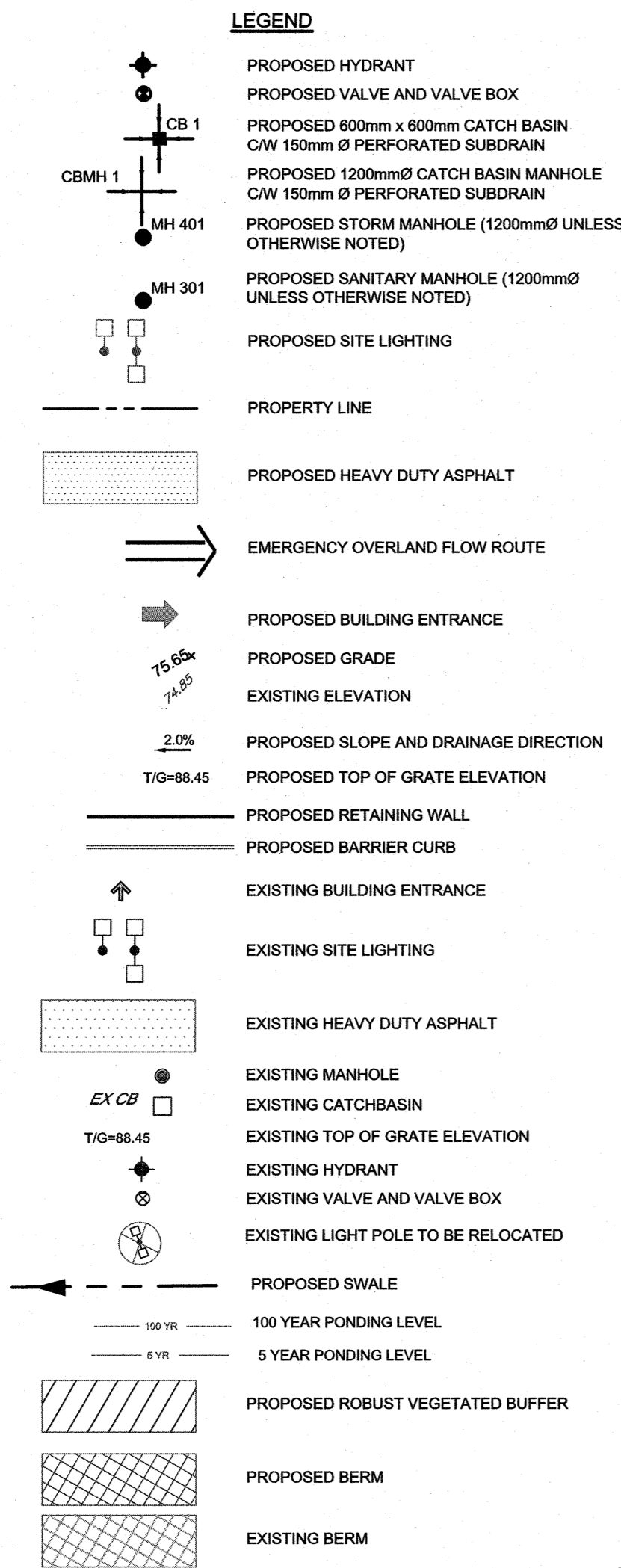


KEY PLAN

NOTES: GENERAL

- CONTRACTOR IS RESPONSIBLE FOR ALL LAYOUT FOR CONSTRUCTION PURPOSES.
- ALL ELEVATIONS ARE GEODETIC AND UTILIZE METRIC UNITS.
- JOB BENCH MARK - CONFIRM WITH exp SERVICES INC PRIOR TO UTILIZATION.
- ALL GROUND SURFACES SHALL BE EVENLY GRADED WITHOUT PONDING AREAS AND WITHOUT LOW POINTS EXCEPT WHERE APPROVED SWALE OR CATCHBASIN OUTLETS ARE PROVIDED.
- STRIP AND REMOVE ALL TOPSOIL FROM IMPROVED AREAS.
- COORDINATE AND SCHEDULE ALL WORK WITH OTHER TRADES AND CONTRACTORS.
- ALL EDGES OF DISTURBED PAVEMENT SHALL BE SAWCUT TO FORM A NEAT AND STRAIGHT LINE PRIOR TO PLACING NEW PAVEMENT.
- CURBS TO BE AS PER CITY OF OTTAWA STANDARD SC1.1
- CONTRACTOR IS TO COMPLY WITH THE CITY OF OTTAWA REQUIREMENTS FOR TRAFFIC CONTROL WHEN WORKING ON HAWTHORNE ROAD.
- RESTORE PAVEMENT STRUCTURE AND SURFACES ON EXISTING ROADS TO A CONDITION AT LEAST EQUAL TO ORIGINAL AND TO THE SATISFACTION OF THE MUNICIPAL AUTHORITIES.
- ALL MATERIAL SUPPLIED AND PLACED FOR PARKING LOT AND ACCESS ROAD CONSTRUCTION SHALL BE TO OPSS STANDARDS AND SPECIFICATIONS UNLESS OTHERWISE NOTED. (CONSTRUCTION OPSS 206, 310 & 314 MATERIALS OPSS 1001, 1003 & 1010)
- REFER TO ARCHITECT'S SITE PLAN FOR BUILDING DIMENSIONS AND SITE LAYOUT. DIMENSIONS AND LAYOUT INFORMATION SHALL BE CONFIRMED PRIOR TO COMMENCEMENT OF CONSTRUCTION.
- REFER TO LANDSCAPE ARCHITECT'S PLAN FOR SIDEWALK, PATHWAYS, CONCRETE MEDIAN, PLANTING AND OTHER LANDSCAPE FEATURE MATERIALS AND LOCATIONS.
- FOR DETAILS OF GROUND CONDITIONS, REFERENCE SHOULD BE MADE TO GEOTECHNICAL REPORT PREPARED BY PATERSON GROUP FEB. 28, 2012.
- ADJUST ALL EXISTING AND PROPOSED MANHOLES/CATCHBASINS TO PROPOSED GRADE.



NOTES

THE POSITION OF ALL POLE LINES, CONDUITS, WATERMANS, SEWERS AND OTHER UNDERGROUND AND OVERGROUND UTILITIES AND STRUCTURES IS NOT NECESSARILY SHOWN ON THE CONTRACT DRAWINGS, AND WHERE SHOWN, THE ACCURACY OF THE POSITION OF SUCH UTILITIES AND STRUCTURES IS NOT GUARANTEED. BEFORE STARTING WORK, DETERMINE THE EXACT LOCATION OF ALL SUCH UTILITIES AND STRUCTURES AND ASSUME ALL LIABILITY FOR DAMAGE TO THEM.

NO.	REVISION DESCRIPTION	DATE	BY	APPD	NO.	REVISION DESCRIPTION	DATE	BY	APPD
6	ISSUED FOR REVIEW	09/06/16	ML	AA	2	REVISED ISSUE FOR SITE PLAN APPROVAL BUILDING 500 & 600	13/10/16	ML	AA
5	ADDED EXTERNAL DRAINAGE STM SEWER	27/05/16	ML	AA	7	PROPOSED GRADING TO ACCOMMODATE EXTERNAL DRAINAGE	14/07/16	ML	AA
4	REVISED PER CITY COMMENTS	12/05/16	ML	AA					
3	REVISED PER CITY COMMENTS	18/04/16	ML	AA					
2	REVISED ISSUE FOR SITE PLAN APPROVAL BUILDING 500 & 600	11/12/15	ML	AA					
1	ISSUED FOR SITE PLAN APPROVAL BUILDING 500 & 600	09/11/15	ML	AA					

SCALE	1:750
-------	-------

1172321 ONTARIO INCORPORATED
223 COLONNADE RD. S., OTTAWA
K2E 7K3 613-723-7490

exp. SERVICES INC.
1172321 ONTARIO INCORPORATED
223 COLONNADE RD. S. UNIT 100
OTTAWA, ON K2E 7K3
CANADA
www.exp.com

• BUILDINGS • EARTH & ENVIRONMENT • ENERGY •
• INDUSTRIAL • INFRASTRUCTURE • SUSTAINABILITY •

PROJECT	3020 HAWTHORNE ROAD BUILDING 500, 600 CITY OF OTTAWA	PROJ. NO.	224388
DESIGN	AA/ML	DATE	OCTOBER 2015
CHECKED	AA	ISSUED	GR1
DWG	ML		
PROJ. MGR	AA		
APPROVED	AA		