

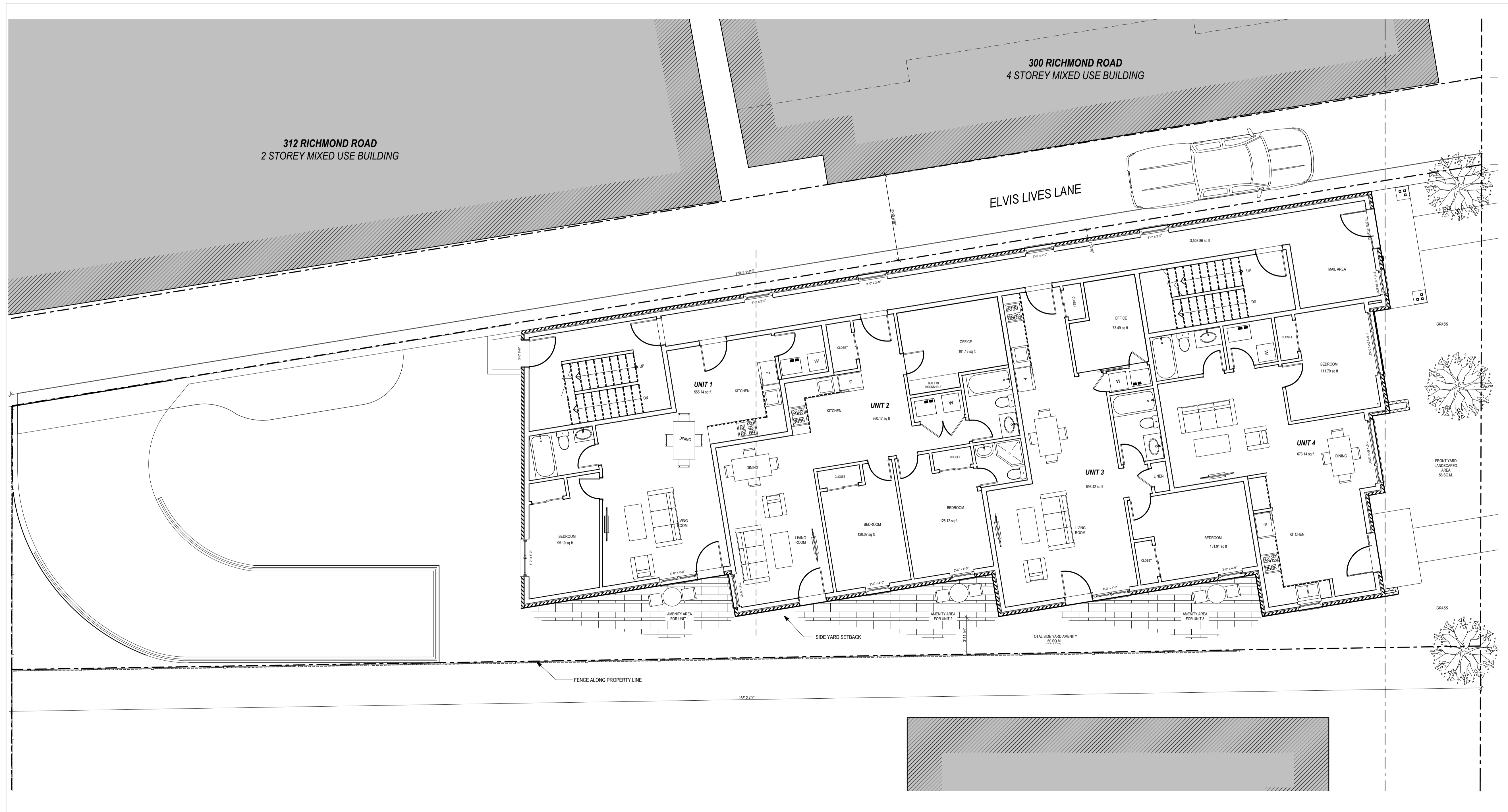
STAMP:

CLIENT: 404 Eden Ltd.
5689 Power Road, Ottawa, ON K1G 3N4

CIVIL ENGINEER: T.L. MAK ENGINEERING CONSULTANTS LTD.
1455 Youville Dr, Orleans, ON K1C 6Z7

PLANNER & LANDSCAPE: FOTENN Planning & Landscape
223 McLeod St, Ottawa, ON K2P 0Z8

NOISE CONSULTANTS: SWALLOW Acoustic Consultants
366 Revus Ave #23, Mississauga, ON L5G 4S5



05	ISSUED FOR SITE PLAN CONTROL RESPONSE	2016-11-03
04	REVISED SITE PLAN	2016-09-16
03	ISSUED FOR COORDINATION	2016-07-18
02	ISSUED FOR SITE PLAN CONTROL	2016-04-06
01	ISSUED FOR COORDINATION	2016-02-16

DRAWINGS COPYRIGHT ROBERTSON MARTIN ARCHITECTS.
DO NOT COPY. DO NOT SCALE DRAWINGS.
ALL DIMENSIONS TO BE CHECKED AND VERIFIED.



PROJECT: **MULTI-UNIT RESIDENTIAL BUILDING**

404 EDEN AVENUE OTTAWA, ONTARIO

DRAWING: **GROUND FLOOR**

DESIGNED BY: _____ APPROVED BY: _____

DRAWN BY: _____

DATE: JANUARY 2016 SCALE: AS SHOWN

RMA PROJECT NUMBER: 15242 SHEET NUMBER: **A-2.1**

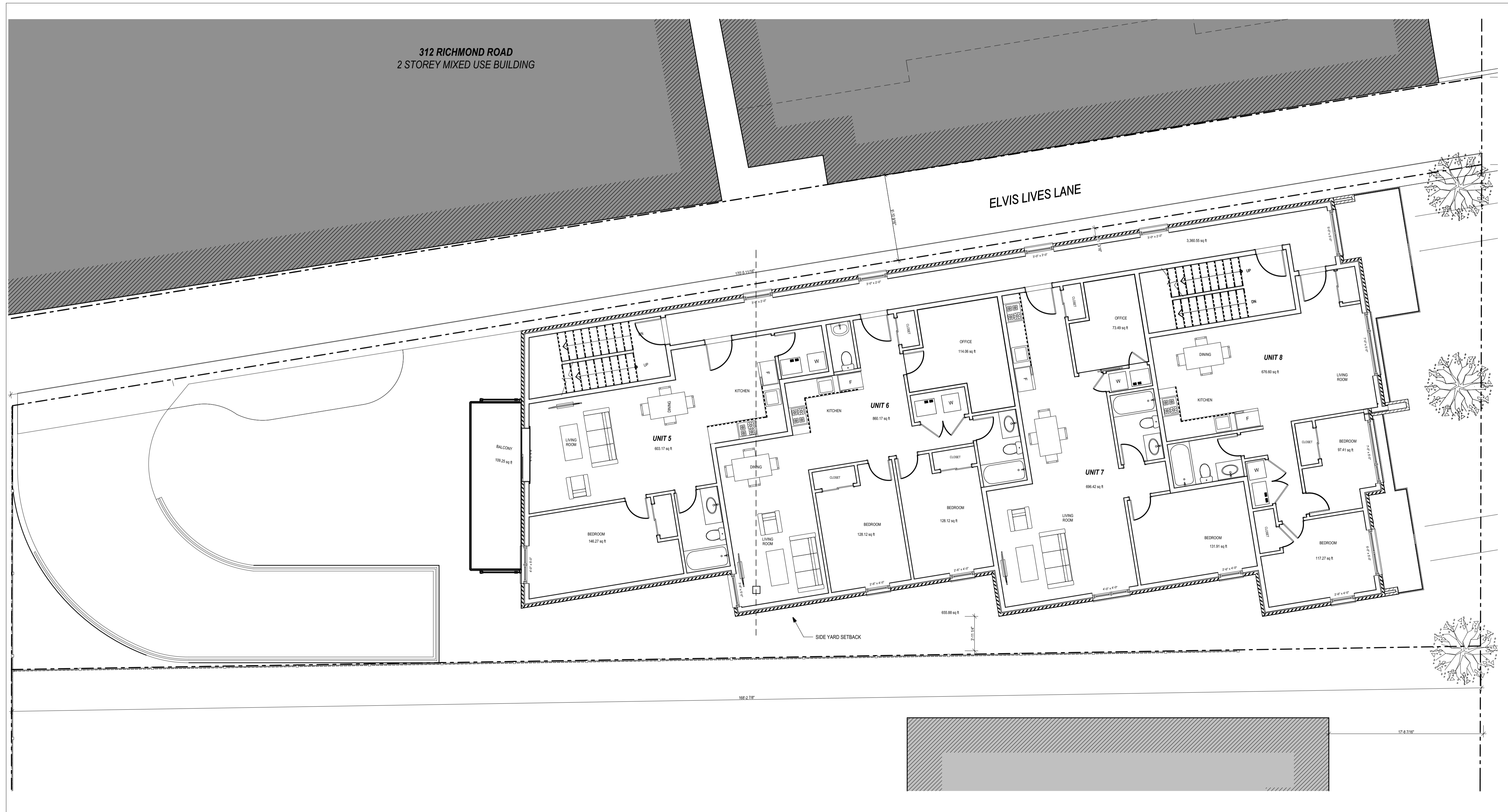
STAMP:

CLIENT: 404 Eden Ltd.
5689 Power Road, Ottawa, ON K1G 3N4

CIVIL ENGINEER: T.L. MAK ENGINEERING CONSULTANTS LTD.
1455 Youville Dr, Orleans, ON K1C 6Z7

PLANNER & LANDSCAPE: FOTENN Planning & Landscape
223 McLeod St, Ottawa, ON K2P 0Z8

NOISE CONSULTANTS: SWALLOW Acoustic Consultants
366 Revus Ave #23, Mississauga, ON L5G 4S5



05	ISSUED FOR SITE PLAN CONTROL RESPONSE	2016-11-03
04	REVISED SITE PLAN	2016-09-16
03	ISSUED FOR COORDINATION	2016-07-18
02	ISSUED FOR SITE PLAN CONTROL	2016-04-06
01	ISSUED FOR COORDINATION	2016-02-16

DRAWINGS COPYRIGHT ROBERTSON MARTIN ARCHITECTS.
DO NOT COPY. DO NOT SCALE DRAWINGS.
ALL DIMENSIONS TO BE CHECKED AND VERIFIED.



PROJECT: MULTI-UNIT RESIDENTIAL BUILDING

404 EDEN AVENUE OTTAWA, ONTARIO

DRAWING: SECOND FLOOR

DESIGNED BY: APPROVED BY:

DRAWN BY:

DATE: JANUARY 2016 SCALE: AS SHOWN

RMA PROJECT NUMBER: 15242 SHEET NUMBER: A-2.2

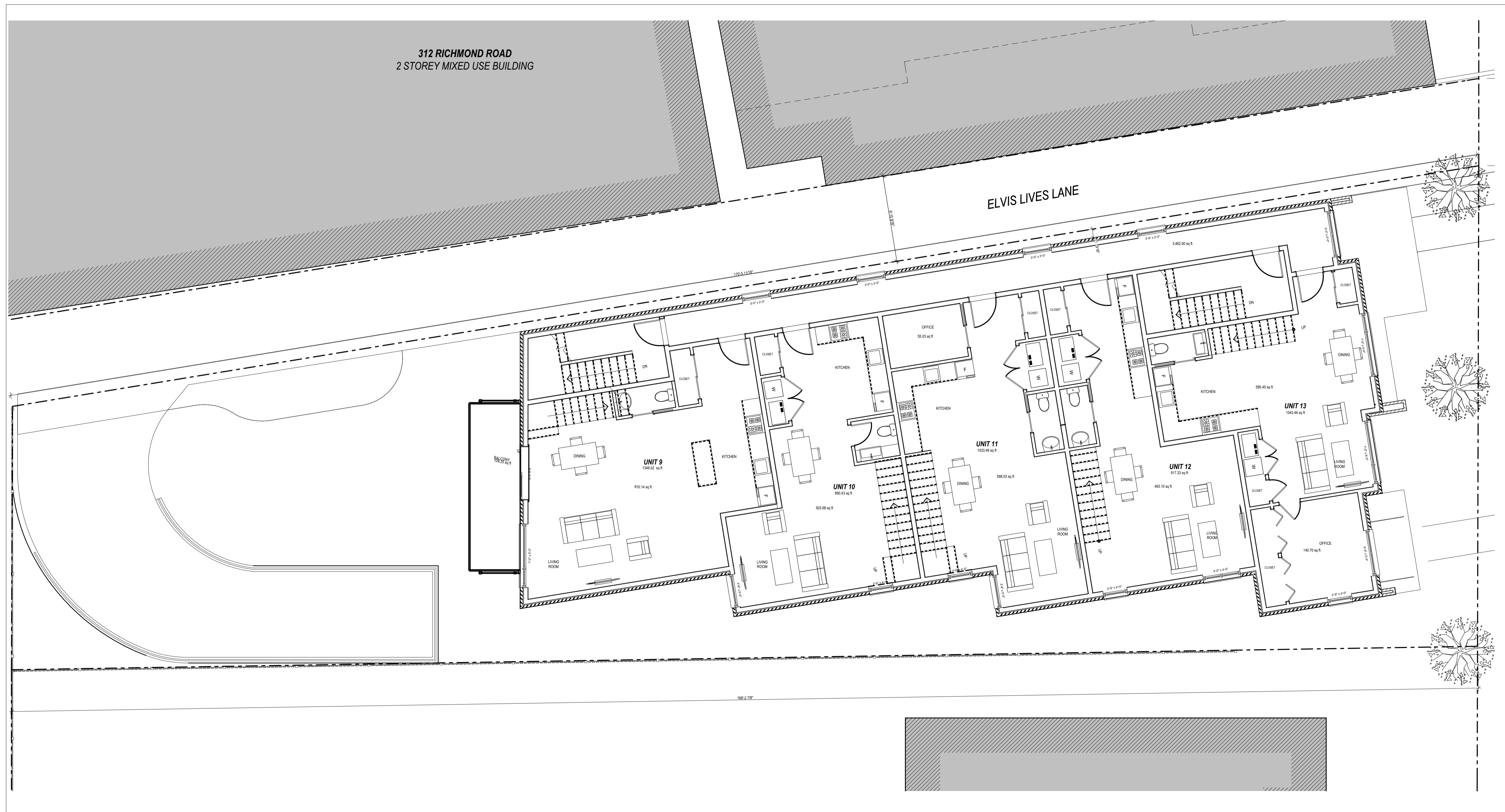
STAMP:

CLIENT: 404 Eden Ltd.
5689 Power Road, Ottawa, ON K1G 3N4

CIVIL ENGINEER: T.L. MAK ENGINEERING CONSULTANTS LTD.
1455 Youville Dr, Orleans, ON K1C 6Z7

PLANNER & LANDSCAPE: FOTENN Planning & Landscape
223 McLeod St, Ottawa, ON K2P 0Z8

NOISE CONSULTANTS: SWALLOW Acoustic Consultants
366 Revus Ave #23, Mississauga, ON L5G 4S5



05	ISSUED FOR SITE PLAN CONTROL RESPONSE	2016-11-03
04	REVISED SITE PLAN	2016-09-16
03	ISSUED FOR COORDINATION	2016-07-18
02	ISSUED FOR SITE PLAN CONTROL	2016-04-06
01	ISSUED FOR COORDINATION	2016-02-16

DRAWINGS COPYRIGHT ROBERTSON MARTIN ARCHITECTS.
DO NOT COPY. DO NOT SCALE DRAWINGS.
ALL DIMENSIONS TO BE CHECKED AND VERIFIED.



PROJECT: **MULTI-UNIT RESIDENTIAL BUILDING**

404 EDEN AVENUE OTTAWA, ONTARIO

DRAWING: **THIRD FLOOR**

DESIGNED BY: _____ APPROVED BY: _____

DRAWN BY: _____

DATE: JANUARY 2016 SCALE: AS SHOWN

RMA PROJECT NUMBER SHEET NUMBER:

15242 **A-2.3**

A1

1 THIRD FLOOR
A-2.3 SCALE = 1:75

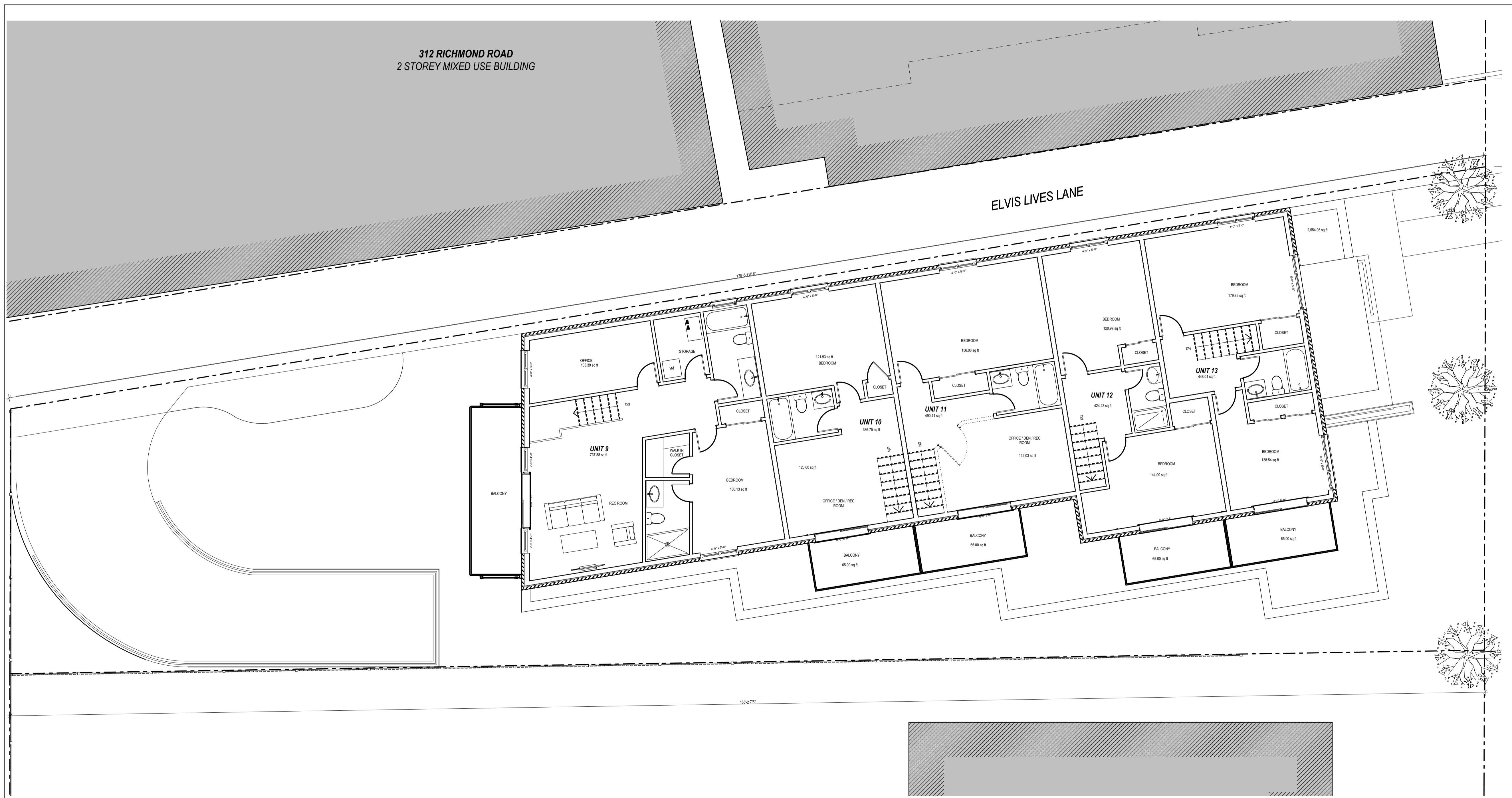
STAMP:

CLIENT:
404 Eden Ltd.
5689 Power Road, Ottawa, ON K1G 3N4

CIVIL ENGINEER:
T.L. MAK ENGINEERING CONSULTANTS LTD.
1455 Youville Dr, Orleans, ON K1C 6Z7

PLANNER & LANDSCAPE:
FOTENN Planning & Landscape
223 McLeod St, Ottawa, ON K2P 0Z8

NOISE CONSULTANTS:
SWALLOW Acoustic Consultants
366 Revus Ave #23, Mississauga, ON L5G 4S5



05	ISSUED FOR SITE PLAN CONTROL RESPONSE	2016-11-03
04	REVISED SITE PLAN	2016-09-16
03	ISSUED FOR COORDINATION	2016-07-18
02	ISSUED FOR SITE PLAN CONTROL	2016-04-06
01	ISSUED FOR COORDINATION	2016-02-16

DRAWINGS COPYRIGHT ROBERTSON MARTIN ARCHITECTS.
DO NOT COPY. DO NOT SCALE DRAWINGS.
ALL DIMENSIONS TO BE CHECKED AND VERIFIED



PROJECT:

MULTI-UNIT RESIDENTIAL BUILDING

404 EDEN AVENUE OTTAWA, ONTARIO
DRAWING:

FOURTH FLOOR

DESIGNED BY: APPROVED BY:

DRAWN BY:

DATE: JANUARY 2016 SCALE: AS SHOWN

RMA PROJECT NUMBER: 15242 SHEET NUMBER: A-2.4

A1