

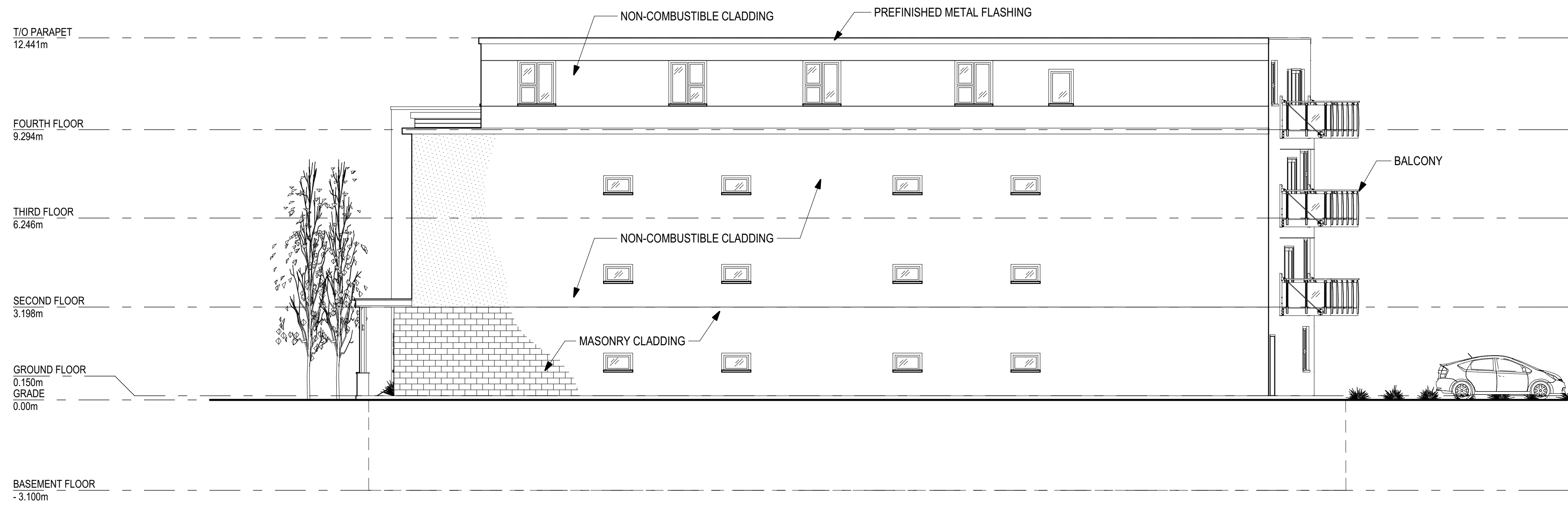
STAMP:

CLIENT:
404 Eden Ltd.
5689 Power Road, Ottawa, ON K1G 3N4

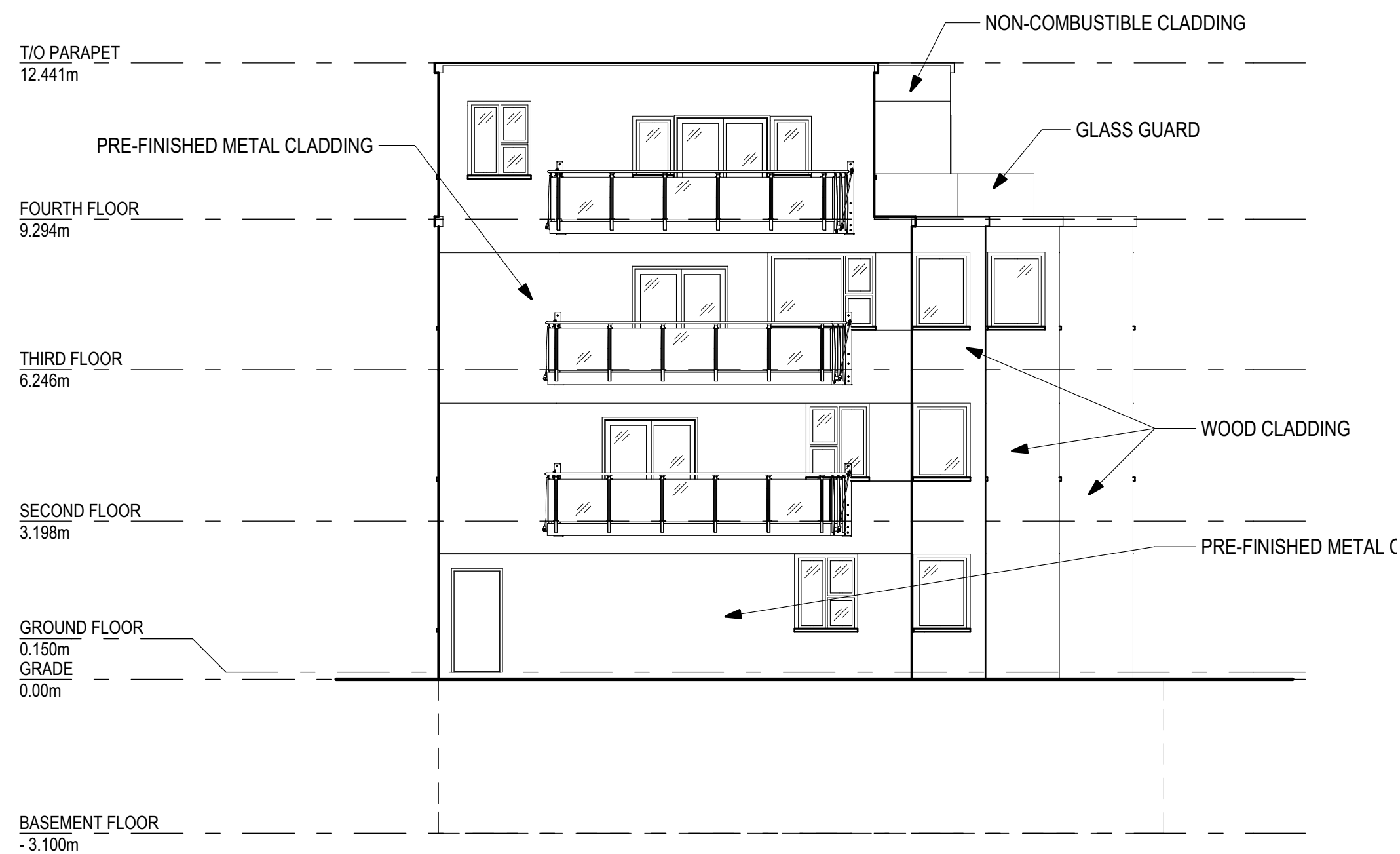
CIVIL ENGINEER:
T.L. MAK ENGINEERING CONSULTANTS LTD.
1455 Youville Dr, Orléans, ON K1C 6Z7

PLANNER & LANDSCAPE:
FOTENN Planning & Landscape
223 McLeod St, Ottawa, ON K2P 0Z8

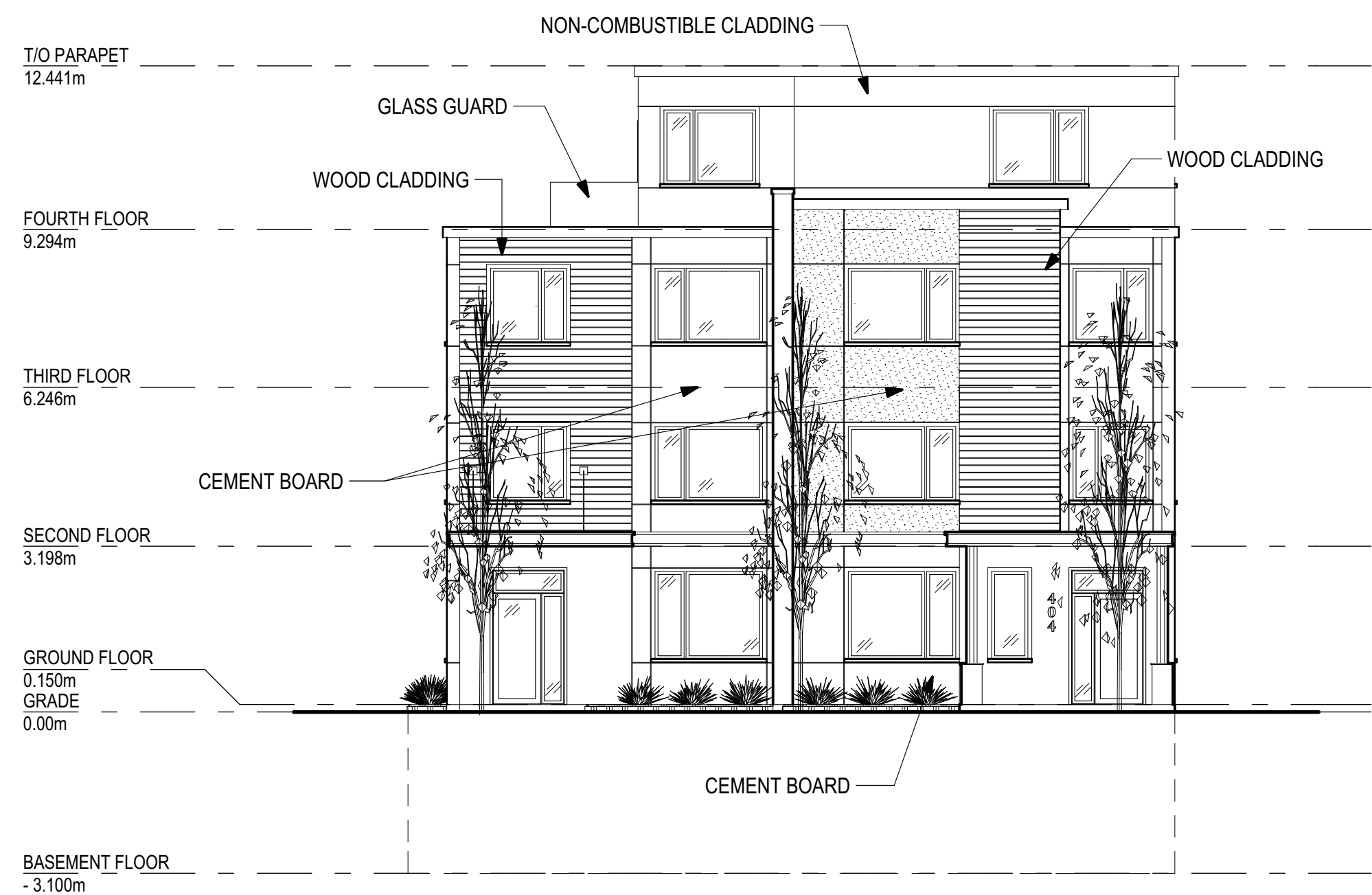
NOISE CONSULTANTS:
SWALLOW Acoustic Consultants
366 Revus Ave #23, Mississauga, ON L5G 4S5



1 NORTH ELEVATION
SCALE = 1:150



2 WEST ELEVATION
SCALE = 1:150



3 EAST ELEVATION
SCALE = 1:150

| | | |
|----|---------------------------------------|------------|
| 05 | ISSUED FOR SITE PLAN CONTROL RESPONSE | 2016-11-03 |
| 04 | REVISED SITE PLAN | 2016-09-16 |
| 03 | ISSUED FOR COORDINATION | 2016-07-18 |
| 02 | ISSUED FOR SITE PLAN CONTROL | 2016-04-06 |
| 01 | ISSUED FOR COORDINATION | 2016-02-16 |

DRAWINGS COPYRIGHT ROBERTSON MARTIN ARCHITECTS.
DO NOT COPY. DO NOT SCALE DRAWINGS.
ALL DIMENSIONS TO BE CHECKED AND VERIFIED

NORTH:



PROJECT:

**MULTI-UNIT RESIDENTIAL
BUILDING**

404 EDEN AVENUE OTTAWA, ONTARIO

DRAWING:

**EAST, WEST & NORTH
ELEVATIONS**

DESIGNED BY: APPROVED BY:

DRAWN BY:

DATE: JANUARY 2016 SCALE: AS SHOWN

RMA PROJECT NUMBER SHEET NUMBER:

15242 A-3.0

STAMP:

CLIENT:
404 Eden Ltd.
5689 Power Road, Ottawa, ON K1G 3N4

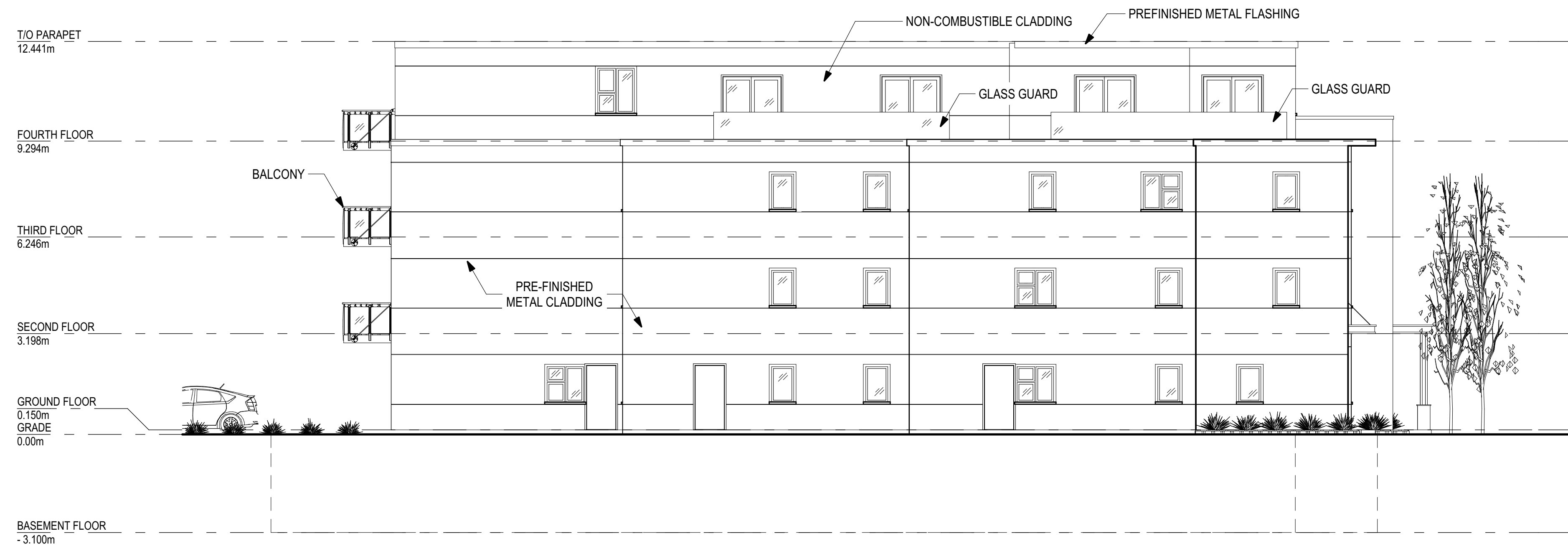
CIVIL ENGINEER:
T.L. MAK ENGINEERING CONSULTANTS LTD.
1455 Youville Dr, Orleans, ON K1C 6Z7

PLANNER & LANDSCAPE:
FOTENN Planning & Landscape
223 McLeod St, Ottawa, ON K2P 0Z8

NOISE CONSULTANTS:
SWALLOW Acoustic Consultants
366 Revis Ave #23, Mississauga, ON L5G 4S5



1 SOUTH ELEVATION
A-3.1 SCALE = 1:150



2 SOUTH ELEVATION - PERPENDICULAR
A-3.1 SCALE = 1:150

| | | |
|----|---------------------------------------|------------|
| 05 | ISSUED FOR SITE PLAN CONTROL RESPONSE | 2016-11-03 |
| 04 | REVISED SITE PLAN | 2016-09-16 |
| 03 | ISSUED FOR COORDINATION | 2016-07-18 |
| 02 | ISSUED FOR SITE PLAN CONTROL | 2016-04-06 |
| 01 | ISSUED FOR COORDINATION | 2016-02-16 |

DRAWINGS COPYRIGHT ROBERTSON MARTIN ARCHITECTS.
DO NOT COPY. DO NOT SCALE DRAWINGS.
ALL DIMENSIONS TO BE CHECKED AND VERIFIED

NORTH:



PROJECT:

**MULTI-UNIT RESIDENTIAL
BUILDING**

404 EDEN AVENUE OTTAWA, ONTARIO
DRAWING:

SOUTH ELEVATIONS

DESIGNED BY: APPROVED BY:

DRAWN BY:

DATE: JANUARY 2016 SCALE: AS SHOWN

RMA PROJECT NUMBER SHEET NUMBER:

15242 A-3.1