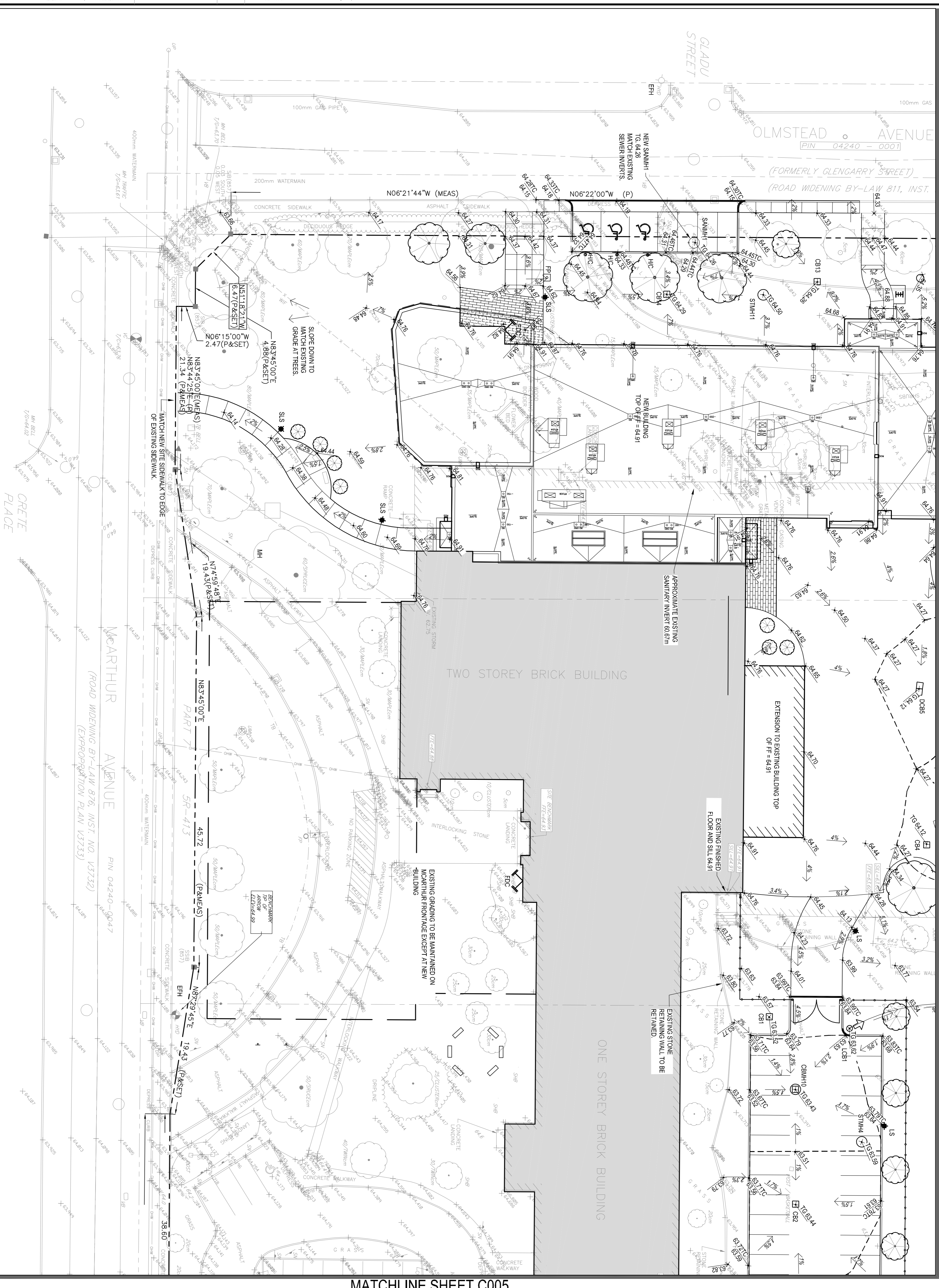
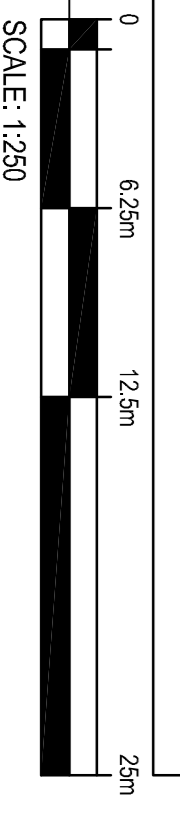


MATCHLINE SHEET C003



MATCHLINE SHEET C005

1 GRADING PLAN
C003 SCALE = 1:250



CONSEIL DES ÉCOLES CATHOLIQUES DU CENTRE-EST
Le meilleur conseil
d'où on puisse vous donner

WSP
2611 QUEENSWAY DRIVE, SUITE 300
OTTAWA (ONTARIO) CANADA K2B 8K2
TELEPHONE: (613) 829-2800
FAX: (613) 829-8299
WWW.WSP-COM
PROJECT NO.:

ISSUE NO.	DATE	ISSUE
1	16/05/16	ISSUED FOR SITE PLAN APPLICATION
2	16/05/16	ISSUED FOR INTERNAL REVIEW

ALL IDEAS, DESIGN ARRANGEMENTS, AND PLANS INDICATED OR REPRESENTED BY THIS DRAWING ARE OWNED BY AND THE PROPERTY OF EDWARD J. CUHACI AND COMPANY. ANY REUSE, REPRODUCTION, OR TRANSMISSION OF THIS DRAWING WITHOUT THE WRITTEN PERMISSION OF EDWARD J. CUHACI AND COMPANY IS STRICTLY PROHIBITED. THE ARCHITECT MAKES ANY AND ALL RESPONSIBILITY AND LIABILITY FOR PROBLEMS WHICH ARISE FROM FAILURE TO FOLLOW THESE PLANS, SPECIFICATIONS, AND THE FAILURE TO OBTAIN AND/OR FOLLOW THE ARCHITECT'S GUIDANCE WITH RESPECT TO ANY ERRORS, OMISSIONS, INCONSISTENCIES, AMBIGUITIES OR CONFLICTS WHICH ARE ALLEGED.

CONTRACTORS TO VERIFY ALL DIMENSIONS AND NOTIFY THE ARCHITECT OF ANY DISCREPANCIES BEFORE WORK COMMENCES. DO NOT SCALE DRAWINGS.

THE NORTH

REGISTERED PROFESSIONAL ENGINEER
J. C. JOHNSON
May 16, 2016
CHARTERED ENGINEER OF ONTARIO

BANK NORTH

EDWARD J. CUHACI & ASSOCIATES ARCHITECTS INC.
1771 Silver Star, Suite 100, Ottawa, Ontario, K1P 6H7
Tel: (613) 236-1944 Telephone: (613) 236-7155 Email: info@edward.com

PROJECT TITLE/ENTRÉE DU PROJET: ÉCOLE ÉLÉMENTAIRE CATHOLIQUE HORIZON-JEUNESSE
349 OLMPSTEAD ST. OTTAWA, ON

CONSEIL DES ÉCOLES CATHOLIQUES DU CENTRE-EST
4000, RUE LABELLE, OTTAWA, ON K1J 1A1

GRADING PLAN - SOUTH WEST

PROJ. NO. 151-48425-00
SCALE: AS SHOWN
ISSUE NO. 2
REV. NO. 1

DESIGNER: B.N.
CHECKED BY: J.J.
DATE: 16/05/16

C004

FORMER ADO FILE: 161464250-004