

IT IS THE RESPONSIBILITY OF THE APPROPRIATE CONTRACTOR TO CHECK AND VERIFY ALL DIMENSIONS ON SITE AND TO REPORT ALL ERRORS AND/OR OMISSIONS TO THE ARCHITECT.  
 ALL CONTRACTORS MUST COMPLY WITH ALL PERTINENT CODES AND BY-LAWS.  
 THIS DRAWING MAY NOT BE USED FOR CONSTRUCTION UNTIL SIGNED BY THE ARCHITECT.  
 DO NOT SCALE DRAWINGS.  
 COPYRIGHT RESERVED.


**NOTATION SYMBOLS:**

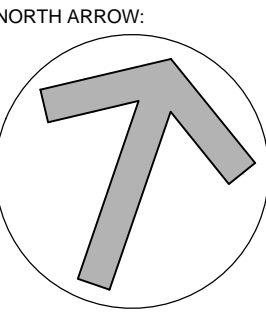
|       |   |
|-------|---|
| (N)   | INDICATES DRAWING NOTES, LISTED ON EACH SHEET.                                |
| (A)   | INDICATES ASSEMBLY TYPE; REFER TO TYPICAL ASSEMBLY SCHEDULE.                  |
| (W)   | INDICATES WINDOW TYPE; REFER TO WINDOW ELEVATIONS AND DETAILS ON A300 SERIES. |
| (D)   | INDICATES DOOR TYPE; REFER TO DOOR SCHEDULE AND DETAILS ON A300 SERIES.       |
| (000) | INDICATES DOOR TYPE; REFER TO DOOR SCHEDULE AND DETAILS ON A300 SERIES.       |
| (-)   | DETAIL NUMBER   |
| (-)   | TITLE   |
| (-)   | SCHEMATIC   |
| (-)   | DETAIL REFERENCE PAGE   |
| (-)   | DETAIL CROSS REFERENCE PAGE   |

- GENERAL NOTES:**
- (A) REFER TO TYPICAL ASSEMBLY SHEET FOR WALL, PARTITION, ROOF CEILING & FLOOR TYPES.
  - (B) FOR DOOR TYPES AND HARDWARE REQUIREMENTS REFER TO DOOR SCHEDULE ON A300 SERIES.
  - (C) ALL INTERIOR DIMENSIONS ARE TAKEN FROM THE FACE OF DRYWALL.
  - (D) ALL EXTERIOR DIMENSIONS ARE TAKEN FROM THE FACE OF CLADDING.
  - (E) ALL EXTERIOR WALLS ARE TO BE TYPE 'W1' UNLESS NOTED OTHERWISE.
  - (F) ALL INTERIOR PARTITIONS ARE TO BE TYPE 'P1' UNLESS NOTED OTHERWISE.

| No. | DESCRIPTION                        | DATE         |
|-----|------------------------------------|--------------|
| 1   | ISSUED FOR S.P.C. COMMENT LETTER 1 | Jan. 24, 19  |
| 2   | ISSUED FOR S.P.C. APPLICATION      | July 27, 18  |
| 3   | REVISED DESIGN - COMMUNITY MEETING | Sept. 21, 17 |
| 4   | ISSUED FOR - COMMUNITY MEETING     | Oct. 4, 16   |
| 5   | O.M.B. HEARING                     | Mar. 4, 13   |
| 6   | REVISED RAMP LOCATION              | Mar. 4, 13   |
| 7   | ISSUED FOR ZONING REPORT           | Jan. 15, 13  |
| 8   | ISSUED FOR ZONING AMENDMENT        | Mar. 28, 12  |

REVISIONS:

ARCHITECT SEAL:  ARCHITECTS: RODERICK LAHEY LICENCE #4725  
 SEAL DATE: STAMP DATE

NORTH ARROW: 

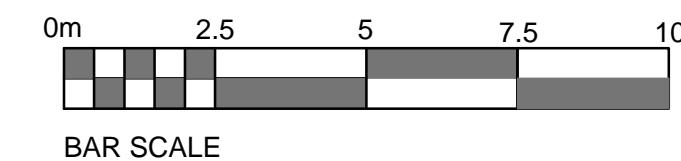
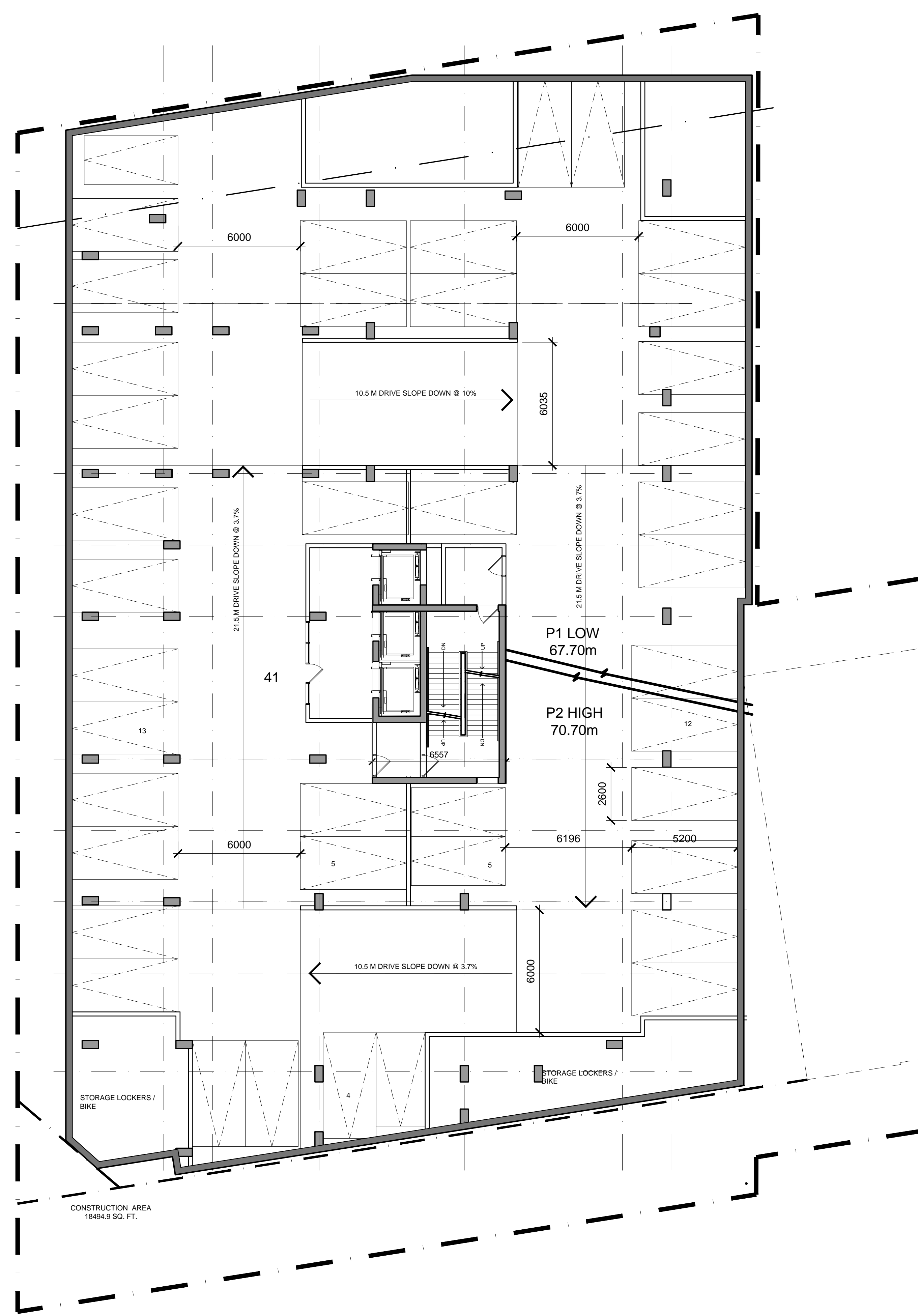
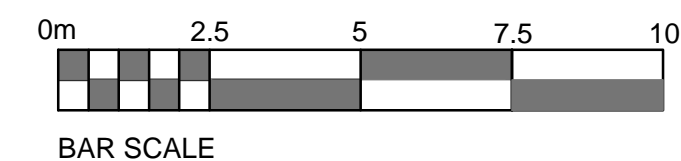
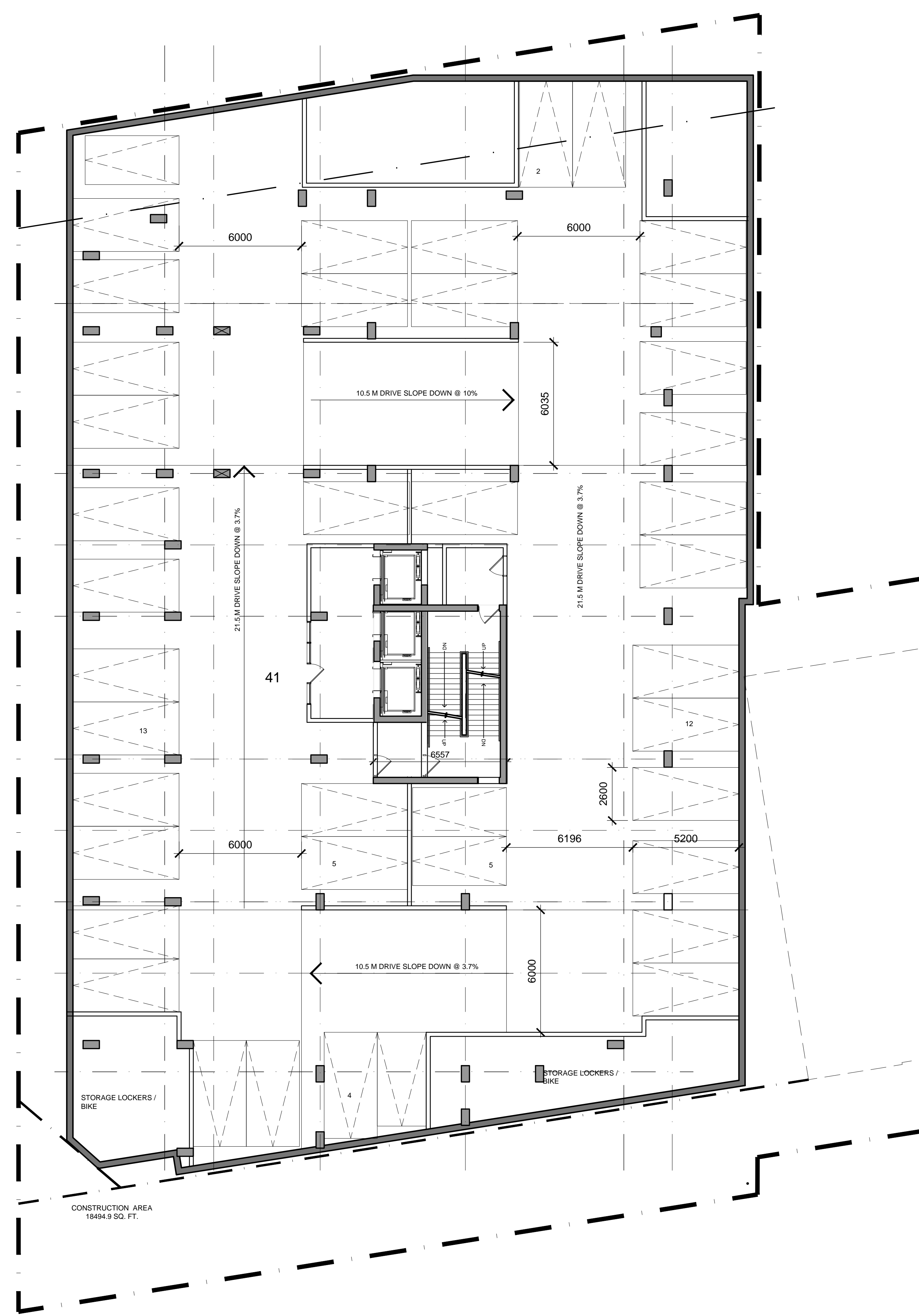
CLIENT: **TAMARACK**  
 TAMARACKHOMES.COM

ARCHITECT: **rla/architecture**  
 roderick lahey architect inc.  
 56 beech street, ottawa, ontario K1S 3J6  
 t. 613.724.9932 f. 613.724.1209 rlaarchitecture.ca

PROJECT TITLE:  
**275 CARLING AVENUE**  
**CARLING @ CAMBRIDGE**  
 OTTAWA ONTARIO

SHEET TITLE:  
**FLOOR PLANS**

|                 |                    |
|-----------------|--------------------|
| DRAWN:<br>RV    | CHECKED:<br>R.L.A. |
| SCALE:<br>1:125 | SHEET No.:         |
| PROJECT No.:    | <b>A-01</b>        |
| 1628            |                    |



P4 LEVEL  
 RESIDENTIAL PARKING

P2 LEVEL (TYPICAL - P3)  
 RESIDENTIAL PARKING



IT IS THE RESPONSIBILITY OF THE APPROPRIATE CONTRACTOR TO CHECK AND VERIFY ALL DIMENSIONS ON SITE AND TO REPORT ALL ERRORS AND/OR OMISSIONS TO THE ARCHITECT.  
 ALL CONTRACTORS MUST COMPLY WITH ALL PERTINENT CODES AND BY-LAWS.  
 THIS DRAWING MAY NOT BE USED FOR CONSTRUCTION UNTIL SIGNED BY THE ARCHITECT.  
 DO NOT SCALE DRAWINGS.  
 COPYRIGHT RESERVED.

**NOTATION SYMBOLS:**

- (1) INDICATES DRAWING NOTES, LISTED ON EACH SHEET.
- (A) INDICATES ASSEMBLY TYPE; REFER TO TYPICAL ASSEMBLY SCHEDULE.
- (W) INDICATES WINDOW TYPE; REFER TO WINDOW ELEVATIONS AND DETAILS ON A300 SERIES.
- (D) INDICATES DOOR TYPE; REFER TO DOOR SCHEDULE AND DETAILS ON A300 SERIES.
- (00) INDICATES DOOR TYPE; REFER TO DOOR SCHEDULE AND DETAILS ON A300 SERIES.
- (-)-DETAIL NUMBER
- (-)-TITLE
- (-)-SCHEMATIC
- (-)-DETAIL REFERENCE PAGE
- (-)-DETAIL CROSS REFERENCE PAGE



**GENERAL NOTES:**

- (A) REFER TO TYPICAL ASSEMBLY SHEET FOR WALL, PARTITION, ROOF CEILING & FLOOR TYPES.
- (B) FOR DOOR TYPES AND HARDWARE REQUIREMENTS REFER TO DOOR SCHEDULE ON A300 SERIES.
- (C) ALL INTERIOR DIMENSIONS ARE TAKEN FROM THE FACE OF DRYWALL.
- (D) ALL EXTERIOR DIMENSIONS ARE TAKEN FROM THE FACE OF CLADDING.
- (E) ALL EXTERIOR WALLS ARE TO BE TYPE 'W1' UNLESS NOTED OTHERWISE.
- (F) ALL INTERIOR PARTITIONS ARE TO BE TYPE 'P1' UNLESS NOTED OTHERWISE.

| No. | DESCRIPTION                        | DATE         |
|-----|------------------------------------|--------------|
| 1   | ISSUED FOR S.P.C. COMMENT LETTER 1 | Jan. 24, 19  |
| 2   | ISSUED FOR S.P.C. APPLICATION      | July 27, 18  |
| 3   | REVISED DESIGN - COMMUNITY MEETING | Sept. 21, 17 |
| 4   | ISSUED FOR - COMMUNITY MEETING     | Oct. 4, 16   |
| 5   | O.M.B. HEARING                     | Mar. 4, 13   |
| 6   | REVISED RAMP LOCATION              | Mar. 4, 13   |
| 7   | ISSUED FOR ZONING REPORT           | Jan. 15, 13  |
| 8   | ISSUED FOR ZONING AMENDMENT        | Mar. 28, 12  |

REVISIONS:

| No. | DESCRIPTION | DATE |
|-----|-------------|------|
|     |             |      |

ARCHITECT SEAL:  NORTH ARROW: 

SEAL DATE: STAMP DATE

CLIENT:

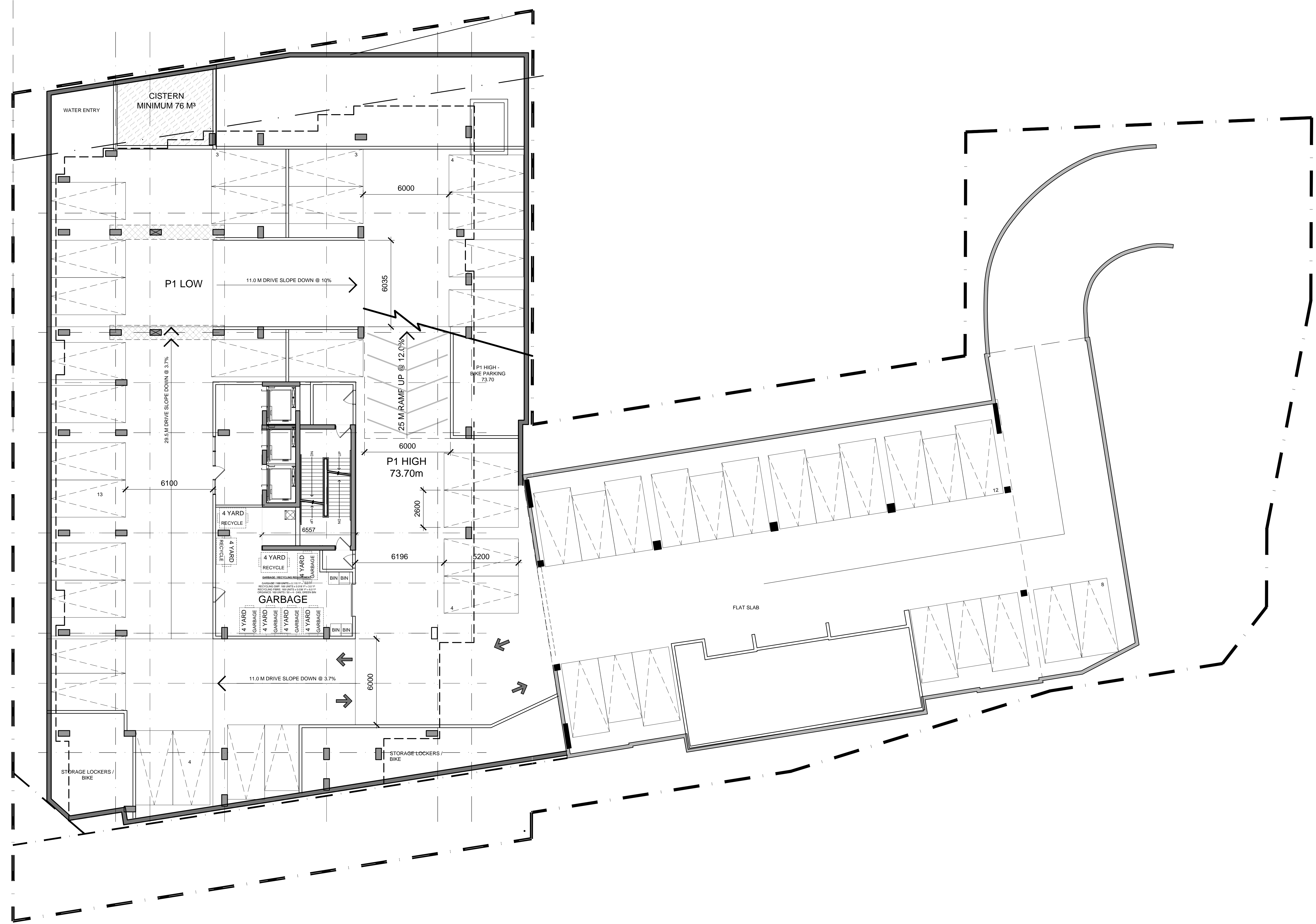


ARCHITECT:  
 rla/architecture  
 roderick lahey architect inc.  
 56 beech street, ottawa, ontario K1S 3J6  
 t. 613.724.9932 f. 613.724.1209 rlaarchitecture.ca

PROJECT TITLE:  
**275 CARLING AVENUE**  
**CARLING @ CAMBRIDGE**  
 OTTAWA ONTARIO

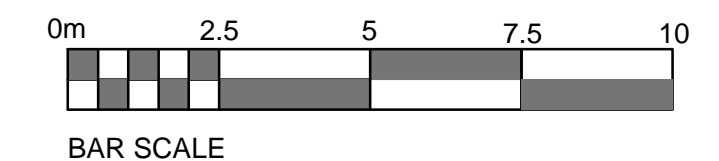
**FLOOR PLANS**

|                     |                          |
|---------------------|--------------------------|
| DRAWN:<br>RV        | CHECKED:<br>R.L.A.       |
| SCALE:<br>1:125     | SHEET No.<br><b>A-02</b> |
| PROJECT No.<br>1628 |                          |



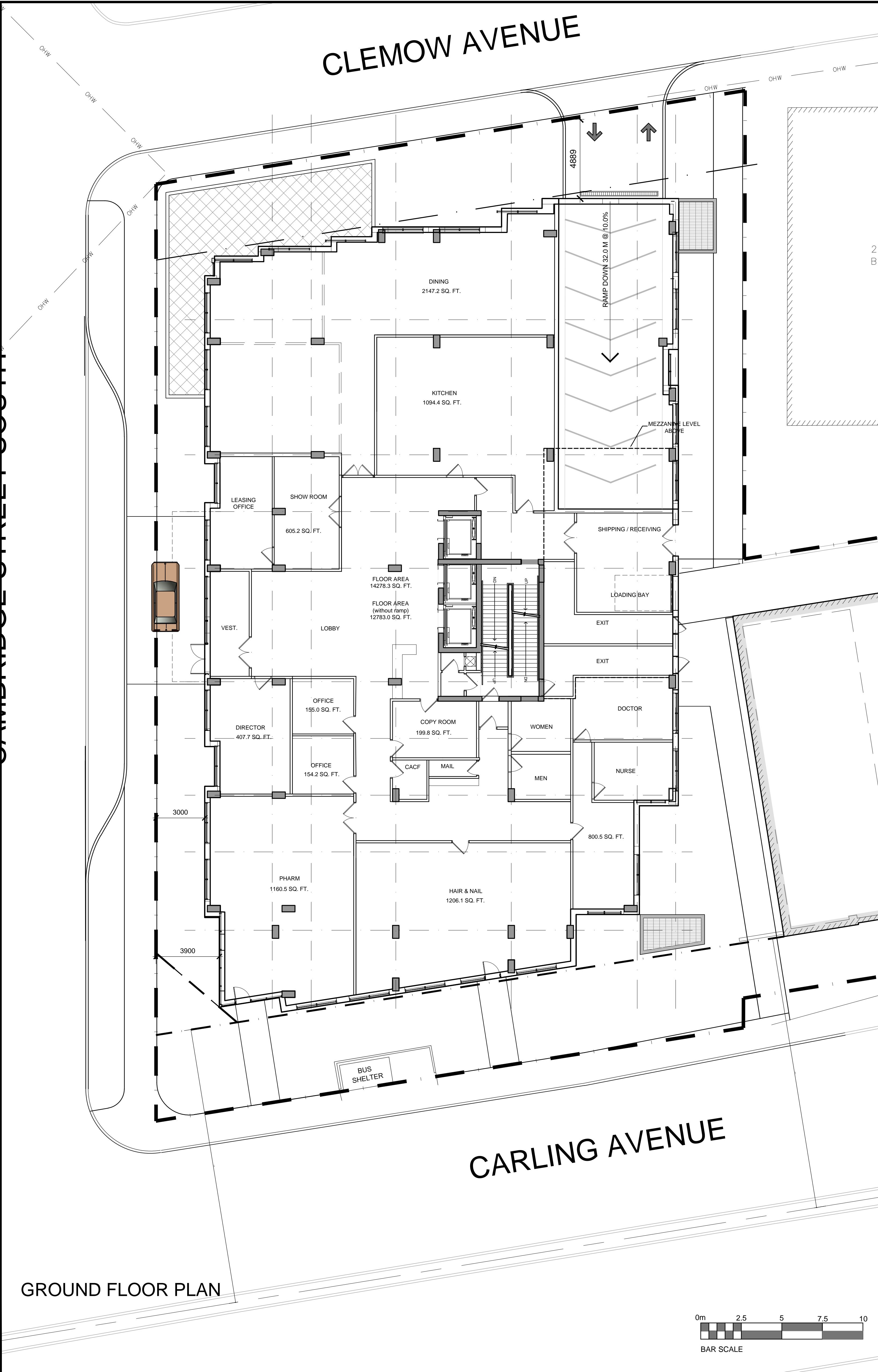
**P1 LEVEL  
 RESIDENTIAL PARKING**

P1 LEVEL  
 NEW - PARKING SPACES: 31  
 EXISTING - PARKING SPACES - 20

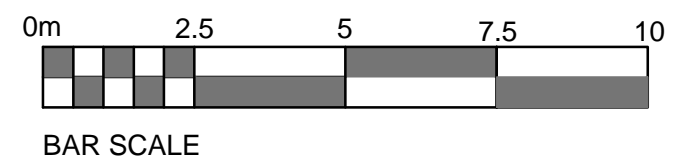




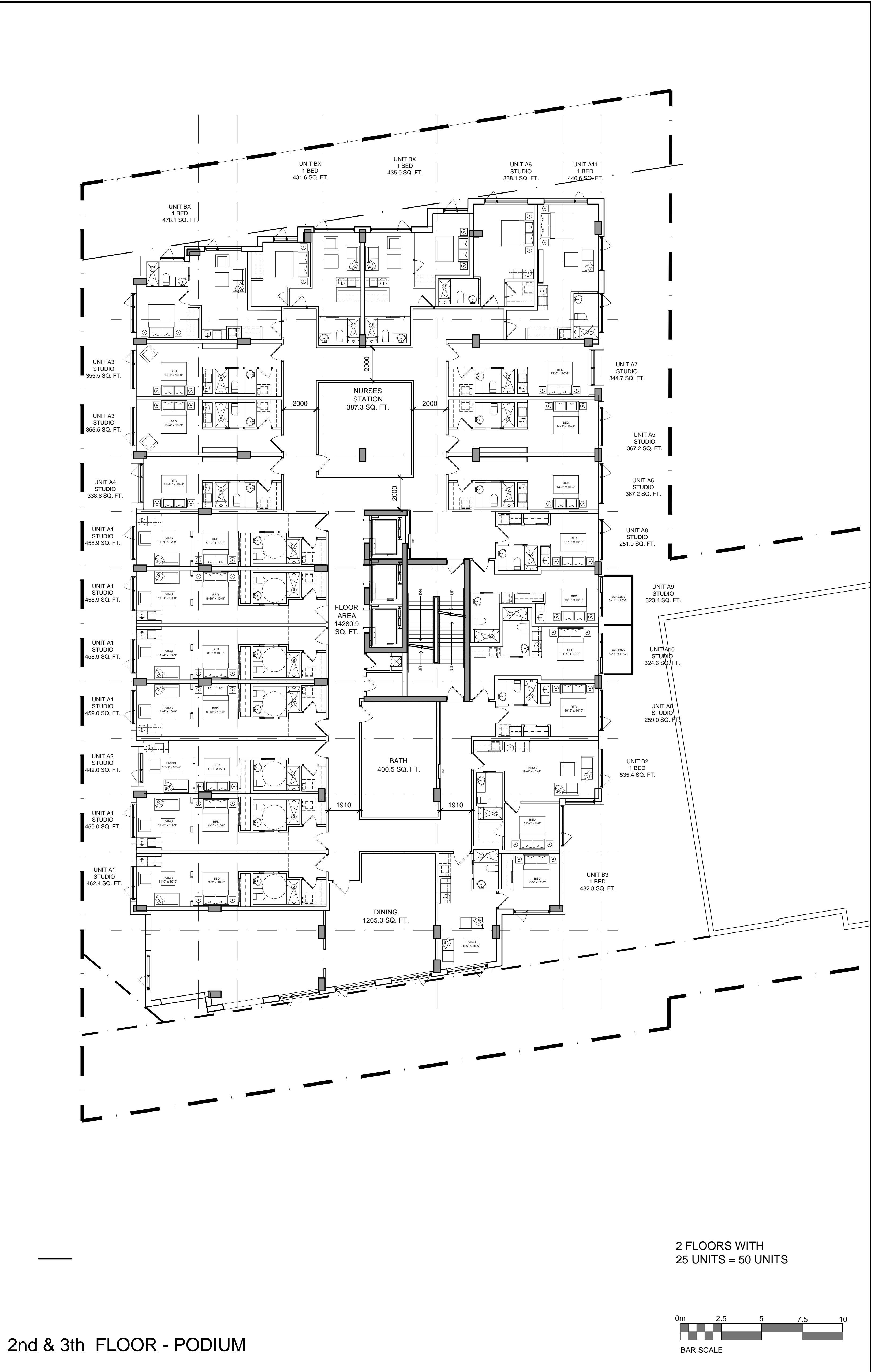
CLEWOW AVENUE



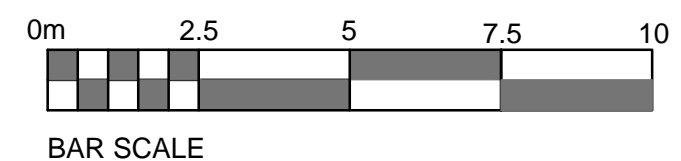
GROUND FLOOR PLAN



CARLING AVENUE



2nd & 3rd FLOOR - PODIUM



2 FLOORS WITH  
25 UNITS = 50 UNITS

IT IS THE RESPONSIBILITY OF THE APPROPRIATE CONTRACTOR TO CHECK AND VERIFY ALL DIMENSIONS ON SITE AND TO REPORT ALL ERRORS AND/OR OMISSIONS TO THE ARCHITECT.  
ALL CONTRACTORS MUST COMPLY WITH ALL PERTINENT CODES AND BY-LAWS.  
THIS DRAWING MAY NOT BE USED FOR CONSTRUCTION UNTIL SIGNED BY THE ARCHITECT.  
DO NOT SCALE DRAWINGS.  
COPYRIGHT RESERVED.

**NOTATION SYMBOLS:**

- (1) INDICATES DRAWING NOTES, LISTED ON EACH SHEET.
- (A) INDICATES ASSEMBLY TYPE; REFER TO TYPICAL ASSEMBLIES SCHEDULED.
- (W) INDICATES WINDOW TYPE; REFER TO WINDOW ELEVATIONS AND DETAILS ON A100 SERIES.
- (D) INDICATES DOOR TYPE; REFER TO DOOR SCHEDULE AND DETAILS ON A100 SERIES.
- (-)-DETAIL NUMBER
- (-)-TITLE
- (-)-SCIT
- (-)-DETAIL REFERENCE PAGE
- (-)-DETAIL CROSS REFERENCE PAGE

**GENERAL NOTES:**

- (A) REFER TO TYPICAL ASSEMBLIES SHEET FOR WALL, PARTITION, ROOF CEILING & FLOOR TYPES.
- (B) FOR DOOR TYPES AND HARDWARE REQUIREMENTS REFER TO DOOR SCHEDULE ON A100 SERIES.
- (C) ALL INTERIOR DIMENSIONS ARE TAKEN FROM THE FACE OF DRYWALL.
- (D) ALL EXTERIOR DIMENSIONS ARE TAKEN FROM THE FACE OF CLADDING.
- (E) ALL EXTERIOR WALLS ARE TO BE TYPE 'W1' UNLESS NOTED OTHERWISE.
- (F) ALL INTERIOR PARTITIONS ARE TO BE TYPE 'P1' UNLESS NOTED OTHERWISE.

| No. | DESCRIPTION                        | DATE         |
|-----|------------------------------------|--------------|
| 1   | ISSUED FOR S.P.C. COMMENT LETTER 1 | Jan. 24, 19  |
| 2   | ISSUED FOR S.P.C. APPLICATION      | July 27, 18  |
| 3   | REVISED DESIGN - COMMUNITY MEETING | Sept. 21, 17 |
| 4   | ISSUED FOR - COMMUNITY MEETING     | Oct. 4, 16   |
| 5   | O.M.B. HEARING                     | Mar. 4, 13   |
| 6   | REVISED RAMP LOCATION              | Mar. 4, 13   |
| 7   | ISSUED FOR ZONING REPORT           | Jan. 15, 13  |
| 8   | ISSUED FOR ZONING AMENDMENT        | Mar. 28, 12  |

REVISIONS:

ARCHITECT SEAL:

NORTH ARROW:

CLIENT:

**TAMARACK**  
TAMARACKHOMES.COM

ARCHITECT:  
**rla/architecture**  
roderick lahey architect inc.  
56 beech street, ottawa, ontario K1S 3J6  
t. 613.724.9932 f. 613.724.1209 rlaarchitecture.ca

PROJECT TITLE:  
**275 CARLING AVENUE**  
CARLING @ CAMBRIDGE  
OTTAWA ONTARIO

SHEET TITLE:  
**FLOOR PLANS**

|                     |                          |
|---------------------|--------------------------|
| DRAWN:<br>RV        | CHECKED:<br>R.L.A.       |
| SCALE:<br>1:125     | SHEET No.<br><b>A-03</b> |
| PROJECT No.<br>1628 |                          |



IT IS THE RESPONSIBILITY OF THE APPROPRIATE CONTRACTOR TO CHECK AND VERIFY ALL DIMENSIONS ON SITE AND TO REPORT ALL ERRORS AND/OR OMISSIONS TO THE ARCHITECT.  
 ALL CONTRACTORS MUST COMPLY WITH ALL PERTINENT CODES AND BY-LAWS.  
 THIS DRAWING MAY NOT BE USED FOR CONSTRUCTION UNTIL SIGNED BY THE ARCHITECT.  
 DO NOT SCALE DRAWINGS.  
 COPYRIGHT RESERVED.

**NOTATION SYMBOLS:**


- (N) INDICATES DRAWING NOTES, LISTED ON EACH SHEET.
- (A) INDICATES ASSEMBLY TYPE; REFER TO TYPICAL ASSEMBLIES SCHEDULE.
- (W) INDICATES WINDOW TYPE; REFER TO WINDOW ELEVATIONS AND DETAILS ON A300 SERIES.
- (D) INDICATES DOOR TYPE; REFER TO DOOR SCHEDULE AND DETAILS ON A300 SERIES.
- (#) -DETAIL NUMBER
- (#) TITLE
- (#) -DETAIL REFERENCE PAGE
- (#) -DETAIL CROSS REFERENCE PAGE


**GENERAL NOTES:**

- (A) REFER TO TYPICAL ASSEMBLIES SHEET FOR WALL, PARTITION, ROOF CEILING & FLOOR TYPES.
- (B) FOR DOOR TYPES AND HARDWARE REQUIREMENTS REFER TO DOOR SCHEDULE ON A300 SERIES.
- (C) ALL INTERIOR DIMENSIONS ARE TAKEN FROM THE FACE OF DRYWALL.
- (D) ALL EXTERIOR DIMENSIONS ARE TAKEN FROM THE FACE OF CLADDING.
- (E) ALL EXTERIOR WALLS ARE TO BE TYPE 'W1' UNLESS NOTED OTHERWISE.
- (F) ALL INTERIOR PARTITIONS ARE TO BE TYPE 'P1' UNLESS NOTED OTHERWISE.

| No. | DESCRIPTION                        | DATE         |
|-----|------------------------------------|--------------|
| 1   | ISSUED FOR S.P.C. COMMENT LETTER 1 | Jan. 24, 19  |
| 2   | ISSUED FOR S.P.C. APPLICATION      | July 27, 18  |
| 3   | REVISED DESIGN - COMMUNITY MEETING | Sept. 21, 17 |
| 4   | ISSUED FOR - COMMUNITY MEETING     | Oct. 4, 16   |
| 5   | O.M.B. HEARING                     | Mar. 4, 13   |
| 6   | REVISED RAMP LOCATION              | Mar. 4, 13   |
| 7   | ISSUED FOR ZONING REPORT           | Jan. 15, 13  |
| 8   | ISSUED FOR ZONING AMENDMENT        | Mar. 28, 12  |

REVISIONS:

ARCHITECT SEAL:  ARCHITECTS: RODERICK LAHEY LICENCE #4725  
 SEAL DATE: STAMP DATE

NORTH ARROW: 

CLIENT:

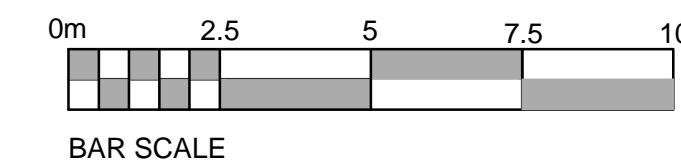
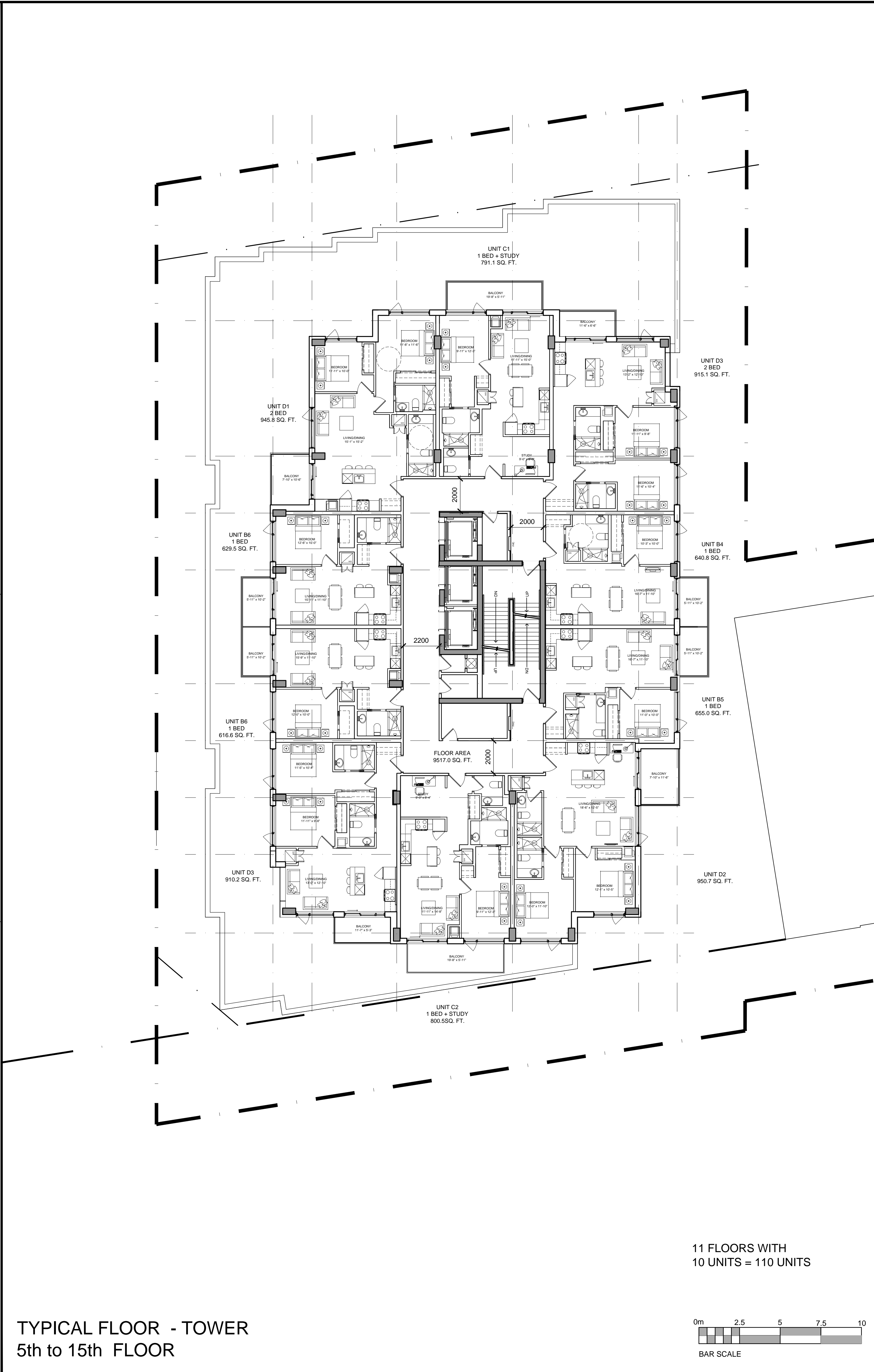
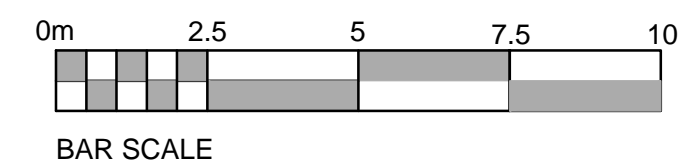
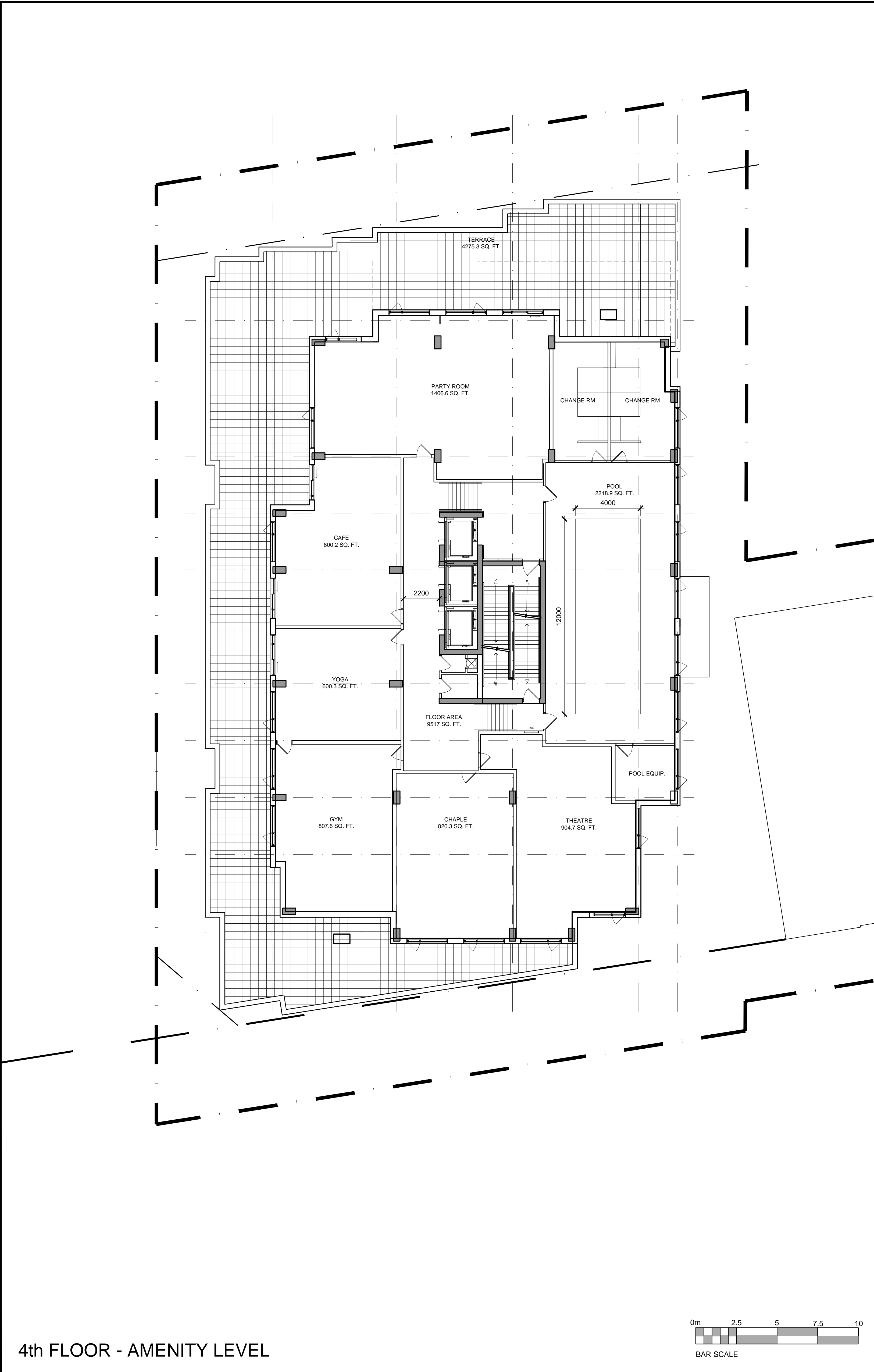
**TAMARACK**  
 TAMARACKHOMES.COM

ARCHITECT:  
 rla/architecture  
 roderick lahey architect inc.  
 56 beech street, ottawa, ontario K1S 3J6  
 t. 613.724.9932 f. 613.724.1209 rlaarchitecture.ca

PROJECT TITLE:  
**275 CARLING AVENUE**  
 CARLING @ CAMBRIDGE  
 OTTAWA ONTARIO

SHEET TITLE:  
**FLOOR PLANS**

|                 |                    |
|-----------------|--------------------|
| DRAWN:<br>RV    | CHECKED:<br>R.L.A. |
| SCALE:<br>1:125 | SHEET No.:         |
| PROJECT No.:    | <b>A-04</b>        |
| 1628            |                    |



11 FLOORS WITH  
 10 UNITS = 110 UNITS



IT IS THE RESPONSIBILITY OF THE APPROPRIATE CONTRACTOR TO CHECK AND VERIFY ALL DIMENSIONS ON SITE AND TO REPORT ALL ERRORS AND/OR OMISSIONS TO THE ARCHITECT.  
 ALL CONTRACTORS MUST COMPLY WITH ALL PERTINENT CODES AND BY-LAWS.  
 THIS DRAWING MAY NOT BE USED FOR CONSTRUCTION UNTIL SIGNED BY THE ARCHITECT.  
 DO NOT SCALE DRAWINGS.  
 COPYRIGHT RESERVED.

**NOTATION SYMBOLS:**

- (N) INDICATES DRAWING NOTES, LISTED ON EACH SHEET.
- (A) INDICATES ASSEMBLY TYPE; REFER TO TYPICAL ASSEMBLY SCHEDULE.
- (W) INDICATES WINDOW TYPE; REFER TO WINDOW ELEVATIONS AND DETAILS ON A300 SERIES.
- (D) INDICATES DOOR TYPE; REFER TO DOOR SCHEDULE AND DETAILS ON A300 SERIES.
- (C) TITLE
- (R) DETAIL REFERENCE PAGE
- (X) DETAIL CROSS REFERENCE PAGE



**GENERAL NOTES:**

- (A) REFER TO TYPICAL ASSEMBLY SHEET FOR WALL, PARTITION, ROOF CEILING & FLOOR TYPES.
- (B) FOR DOOR TYPES AND HARDWARE REQUIREMENTS REFER TO DOOR SCHEDULE ON A300 SERIES.
- (C) ALL INTERIOR DIMENSIONS ARE TAKEN FROM THE FACE OF DRYWALL.
- (D) ALL EXTERIOR DIMENSIONS ARE TAKEN FROM THE FACE OF CLADDING.
- (E) ALL EXTERIOR WALLS ARE TO BE TYPE 'W1' UNLESS NOTED OTHERWISE.
- (F) ALL INTERIOR PARTITIONS ARE TO BE TYPE 'P1' UNLESS NOTED OTHERWISE.

| No. | DESCRIPTION                        | DATE         |
|-----|------------------------------------|--------------|
| 1   | ISSUED FOR S.P.C. COMMENT LETTER 1 | Jan. 24, 19  |
| 2   | ISSUED FOR S.P.C. APPLICATION      | July 27, 18  |
| 3   | REVISED DESIGN - COMMUNITY MEETING | Sept. 21, 17 |
| 4   | ISSUED FOR - COMMUNITY MEETING     | Oct. 4, 16   |
| 5   | O.M.B. HEARING                     | Mar. 4, 13   |
| 6   | REVISED RAMP LOCATION              | Mar. 4, 13   |
| 7   | ISSUED FOR ZONING REPORT           | Jan 15, 13   |
| 8   | ISSUED FOR ZONING AMENDMENT        | Mar 28, 12   |

| No. | DESCRIPTION                        | DATE         |
|-----|------------------------------------|--------------|
| 1   | ISSUED FOR S.P.C. COMMENT LETTER 1 | Jan. 24, 19  |
| 2   | ISSUED FOR S.P.C. APPLICATION      | July 27, 18  |
| 3   | REVISED DESIGN - COMMUNITY MEETING | Sept. 21, 17 |
| 4   | ISSUED FOR - COMMUNITY MEETING     | Oct. 4, 16   |
| 5   | O.M.B. HEARING                     | Mar. 4, 13   |
| 6   | REVISED RAMP LOCATION              | Mar. 4, 13   |
| 7   | ISSUED FOR ZONING REPORT           | Jan 15, 13   |
| 8   | ISSUED FOR ZONING AMENDMENT        | Mar 28, 12   |

REVISIONS:

ARCHITECT SEAL:  NORTH ARROW: 

SEAL DATE: STAMP DATE

CLIENT:

**TAMARACK**  
TAMARACKHOMES.COM

ARCHITECT:  
**rla/architecture**  
roderick lahey architect inc.  
56 beech street, ottawa, ontario K1S 3J6  
t. 613.724.9932 f. 613.724.1209 rlaarchitecture.ca

PROJECT TITLE:  
**275 CARLING AVENUE**  
**CARLING @ CAMBRIDGE**  
OTTAWA ONTARIO

SHEET TITLE:  
**FLOOR PLANS**

|                     |                          |
|---------------------|--------------------------|
| DRAWN:<br>RV        | CHECKED:<br>R.L.A.       |
| SCALE:<br>1:125     | SHEET No.<br><b>A-05</b> |
| PROJECT No.<br>1628 |                          |

