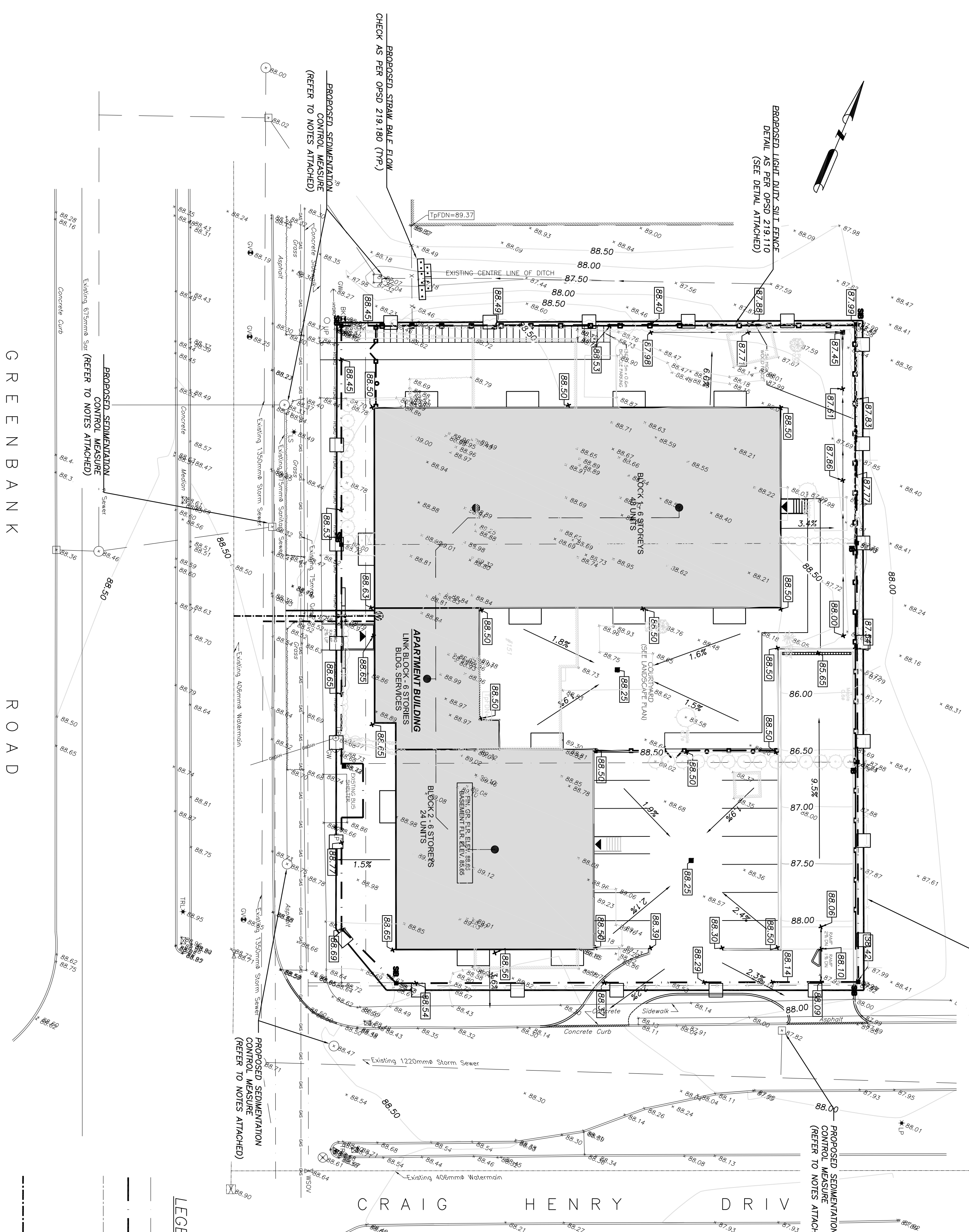
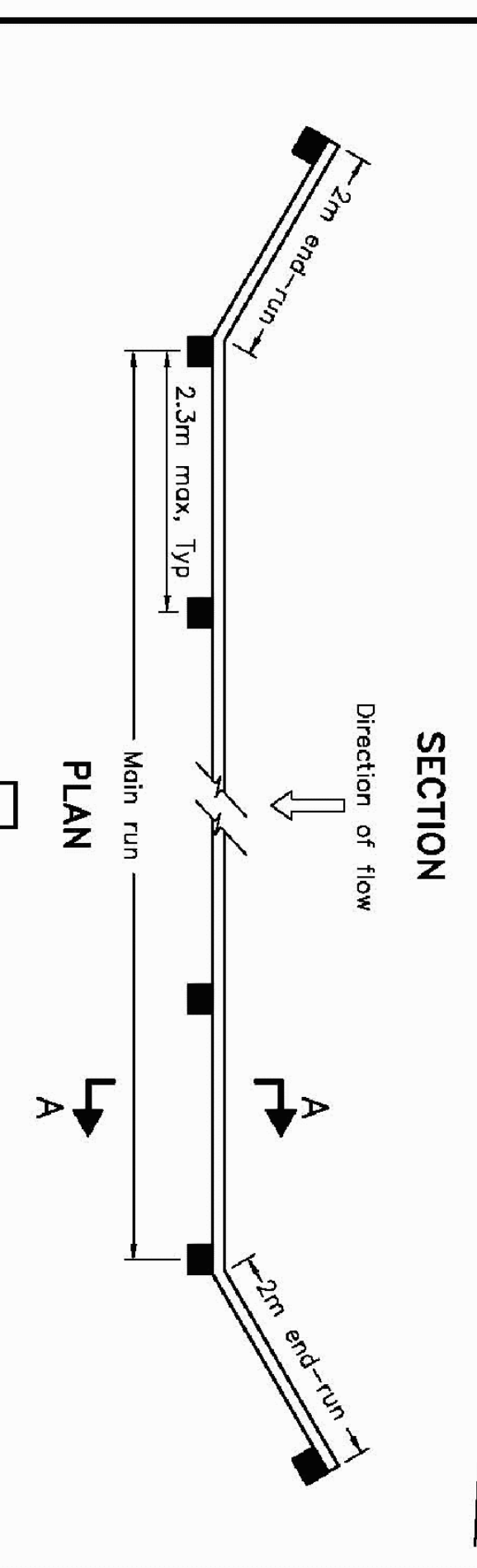
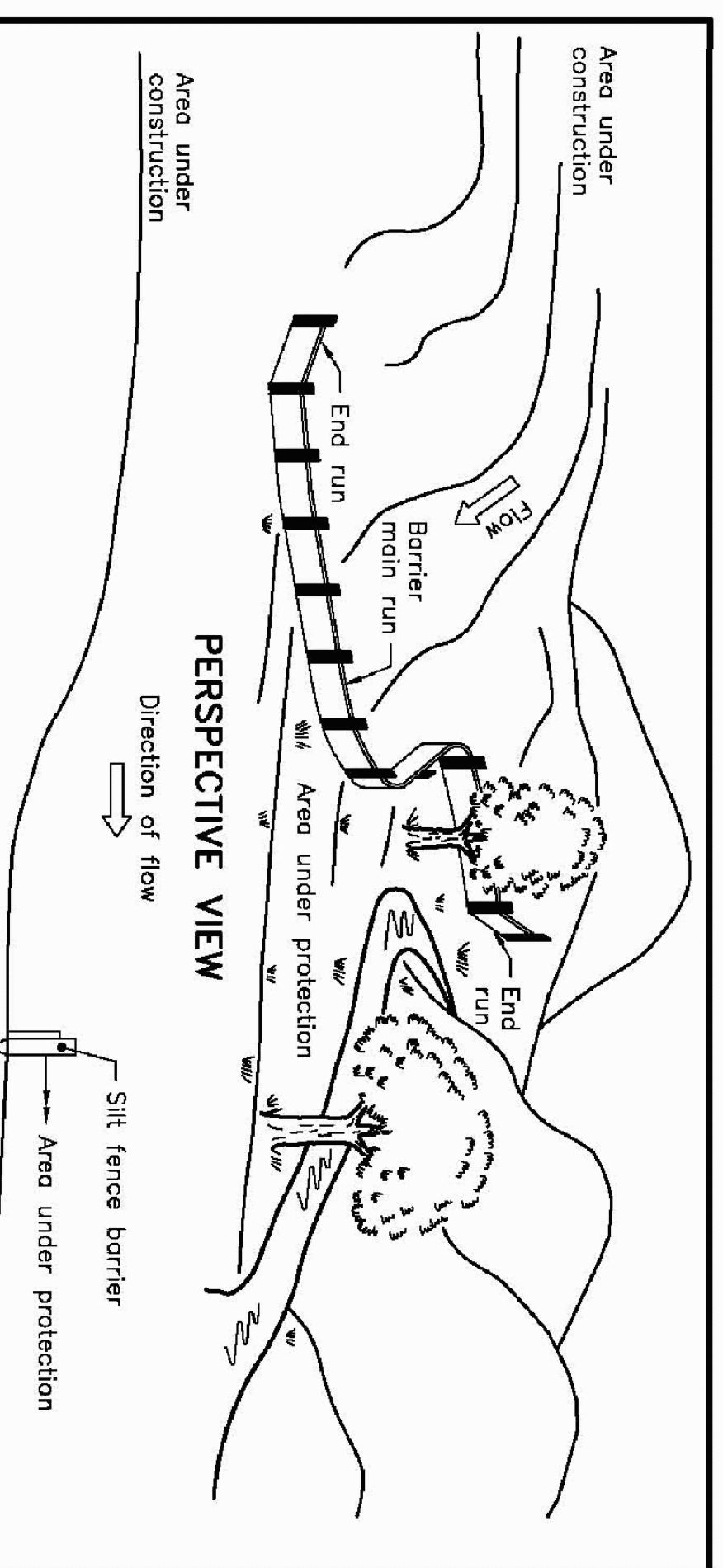


PROPOSED LIGHT DUTY SILT FENCE
DETAIL AS PER OPSD 219.110
(SEE DETAIL ATTACHED)



EROSION AND SEDIMENT CONTROL GENERAL NOTES:

- BEFORE CONSTRUCTION MEASURES:**
- PRIOR TO THE START OF CONSTRUCTION, PRIOR TO THE REMOVAL OF EXISTING VEGETATION, THE CONTRACTOR SHALL:
 - INSTALL STAKED STRAW BALE SEDIMENT TRAP AND SILT FENCE ALONG DITCHES IMMEDIATELY DOWNSTREAM FROM AREAS TO BE DISTURBED.
 - INSTALL FILTER CLOTH ON DOWNSTREAM MANHOLE COVERS & ALL CATCH BASINS
 - INSPECT MEASURES IMMEDIATELY AFTER INSTALLATION.
 - MINIMIZE THE EXTENT OF DISTURBED AREAS AND THE DURATION OF EXPOSURE.
 - PROTECT DISTURBED AREAS FROM RUNOFF.
 - PROVIDE TEMPORARY COVER SUCH AS SEEDING OR MULCHING.
 - INSPECT SEDIMENT TRAP, SILT FENCES, FILTER CLOTHS AND CATCH BASIN Sumps REGULARLY AND AFTER EVERY MAJOR STORM EVENT AND CLEAN AND REPAIR WHEN NECESSARY.
 - AFTER CONSTRUCTION:
 - REMOVE EXCESSIVE SOIL COVER CONSISTING OF TOPSOIL AND SEED TO DISTURBED AREAS.
 - REMOVE SEDIMENT TRAP, SILT FENCES, FILTER CLOTH ON CATCH BASINS AND MANHOLE COVERS AFTER DISTURBED AREAS HAVE BEEN REHABILITATED AND STABILIZED.
 - INSPECT AND REPAIR Sumps AND INSPECT STORM SEWER AND SANITARY SEWER LINES.
- GENERAL NOTE:**
IT IS THE RESPONSIBILITY OF CONTRACTOR TO ENSURE THAT GOOD SEDIMENTATION CONTROL MEASURES ARE IMPLEMENTED DURING CONSTRUCTION PERIOD AND IN THE LONG TERM.

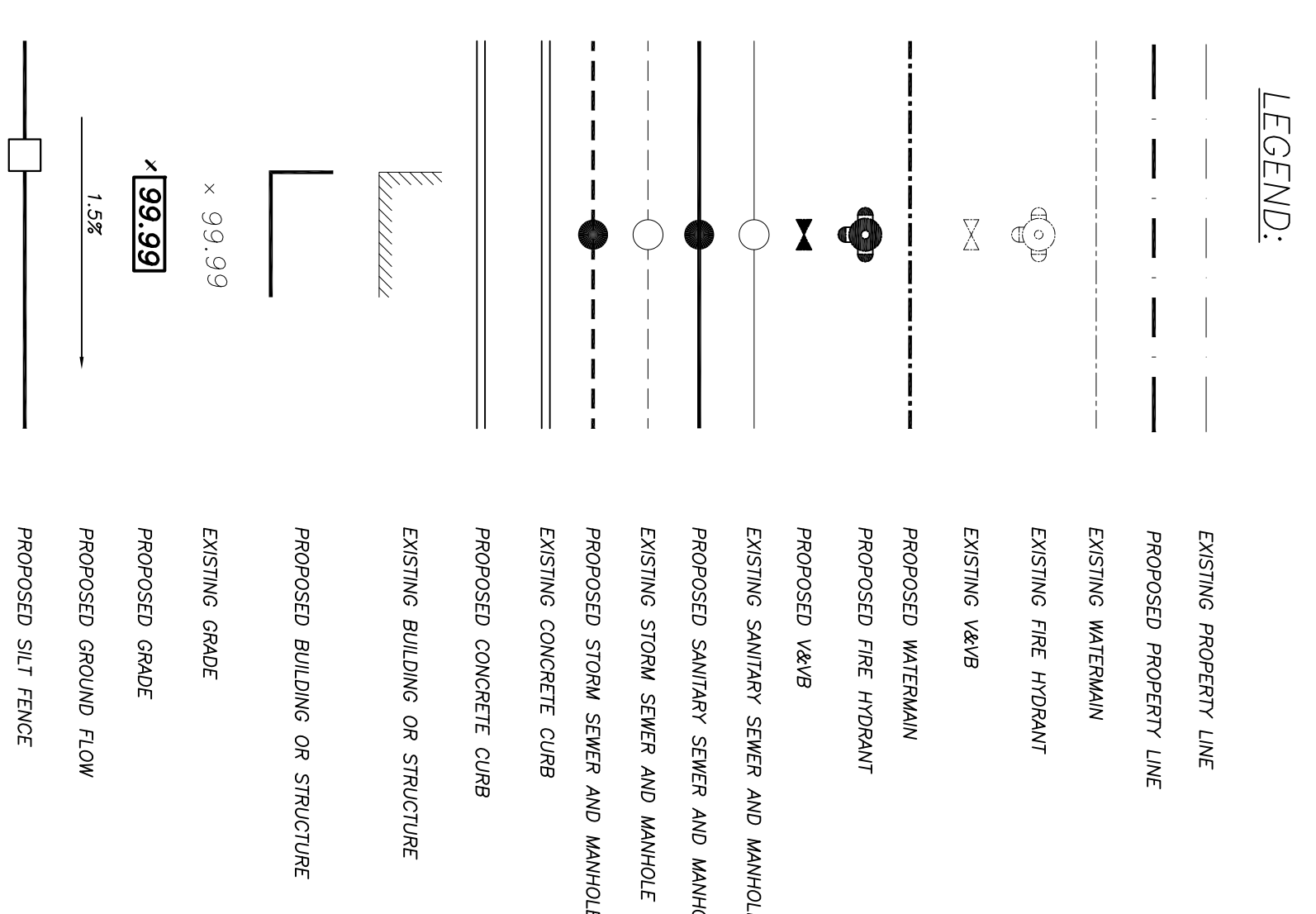


NOTE:
A All dimensions are in millimetres unless otherwise shown.

ONTARIO PROVINCIAL STANDARD DRAWING

LIGHT-DUTY SILT FENCE BARRIER

OPSD 219.110

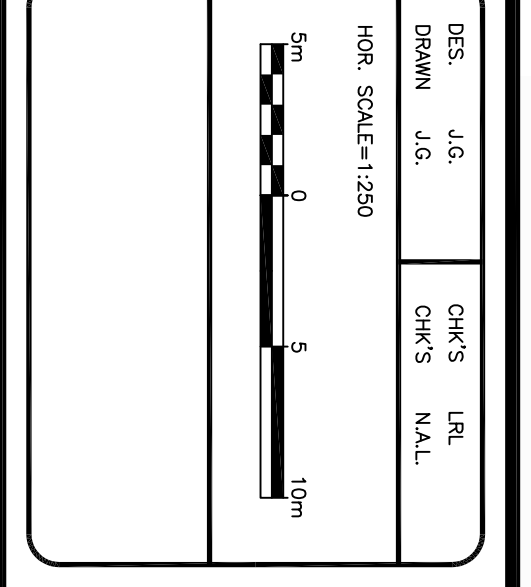


1. USE AND INTERPRETATION OF DRAWINGS:
THE GENERAL CONDITIONS OF THE CONTRACT FOR CONSTRUCTION ARE PART OF THE CONTRACT DOCUMENTS AND DESCRIBE THE USE AND MEANING OF THE DRAWINGS. THE CONTRACTOR SHALL BE RESPONSIBLE FOR OBTAINING AND UNDERSTANDING THE CONTRACT DOCUMENTS. THESE CONTRACT DOCUMENTS ARE HEREBY MADE A PART OF THE CONTRACT. THE CONTRACTOR SHALL BE RESPONSIBLE FOR OBTAINING AND UNDERSTANDING THE CONTRACT DOCUMENTS. THESE CONTRACT DOCUMENTS ARE HEREBY MADE A PART OF THE CONTRACT. THE CONTRACTOR SHALL BE RESPONSIBLE FOR OBTAINING AND UNDERSTANDING THE CONTRACT DOCUMENTS. THESE CONTRACT DOCUMENTS ARE HEREBY MADE A PART OF THE CONTRACT.

UNAUTHORIZED CHANGES:
IN THE EVENT THE CLIENT'S CONTRACTORS OR SUBCONTRACTORS, OR ANY OTHER PARTY, MAKE ANY CHANGES TO THE DRAWINGS WITHOUT THE WRITTEN APPROVAL OF THE ENGINEER, THE CLIENT SHALL BE RESPONSIBLE FOR ANY CHANGES TO THE DRAWINGS. THE ENGINEER SHALL NOT BE RESPONSIBLE FOR ANY CHANGES TO THE DRAWINGS MADE BY ANY OTHER PARTY.

REVISIONS

No.	ISSUED FOR SITE CONTROL PLAN APPLICATION	BY	DATE
01		J.G.	OCT. 7, 2010



PROJECT: PROPOSED APARTMENT BUILDING 149, 151, & 153 GREENBANK RD. CITY OF OTTAWA

CLIENT: PHOENIX HOMES

DATE: OCTOBER 2010

FILE: 10498

DWG. NO.: C3

LEVACK ROBERT LEVACK ASSOCIATES LTD. CONSULTING ENGINEERS