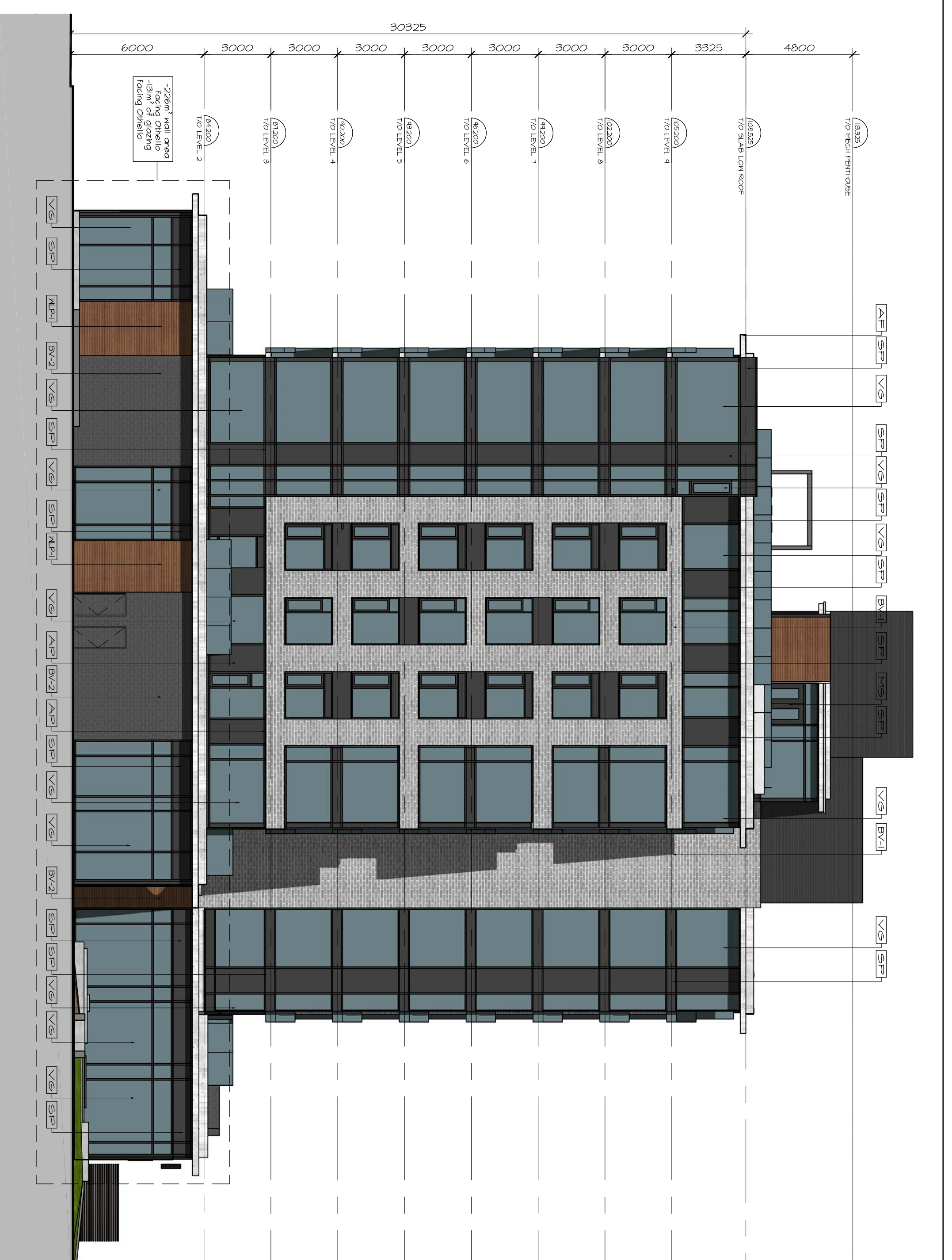


1 EAST ELEVATION
A3.02 | 1:150



1 WEST ELEVATION
A3.02 | 1:150

- [A-F] ALUMINIUM FLASHINGS
- [A-F] ALUMINIUM PANEL
- [B-V-1] BRICK VENEER 1
- [B-V-2] BRICK VENEER 2
- [G-R] GLASS RAILING
- [M-S] METAL SIDING
- [S-P] SPANDREL PANEL
- [V-S] VISION GLASS
- [M-P-1] WOOD-LOOK METAL SIDING

PROJECT TEAM

ARCHITECT
HOBIN ARCHITECTURE
PARK BISSON
613.281.7200

PLANNING
FOTENN CONSULTANTS INC.
3750 SHEPPARD AVENUE EAST
RICHMOND HILL, ONTARIO
L4B 1N2
416.888.5709

CIVIL
DAVID SHAFFER ENGINEERING LTD
1000 SHEPPARD AVENUE EAST
RICHMOND HILL, ONTARIO
L4B 1N2
905.882.8888

LANDSCAPE ARCHITECT
LANDSCAPE ARCHITECTS LTD.
SHERIDAN COLLEGE
1000 SHEPPARD AVENUE EAST
RICHMOND HILL, ONTARIO
L4B 1N2
905.882.8888

TRANSFORMATION
PARSONS ACE
1000 SHEPPARD AVENUE EAST
RICHMOND HILL, ONTARIO
L4B 1N2
905.882.8888

ENVIRONMENTAL
GRADIENT WIND ENGINEERING
JOHN H. FOSTER
815.552.0624

no.	date	revision
1	18.11.14	ISSUED FOR SITE PLAN CONTROL
2	19.02.21	SITE PLAN CONTROL SUBMISSION #2

It is the responsibility of the appropriate contractor to check and verify all dimensions and details of the construction against the drawings and specifications of the architect. All contractors must comply with all pertinent codes and by-laws. Do not scale drawings. This drawing may not be used for construction until signed. Copyright reserved.

RIOCCAN
REAL VISION. SOLID GROUND.

Hobin Architecture Incorporated
63 Patricia Street
Ottawa, Ontario
Canada K1S 3K7
T: 613-238-7200
F: 613-235-2005
E: info@hobinarc.com
hobinarc.com

HOBIN ARCHITECTURE

PROJECT LOCATION:
RIOCCAN - ELMVALE ACRES PHASE 1
1910 ST-LAURENT BLVD.
ELEVATIONS

DRAWING BY: DATE: SCALE:
PH 18.11.02 1:150

PROJECT: DRAWING NO.:
1817

Ontario Association of Architects
Architect's License
3049

A3.02
REVISION NO.: