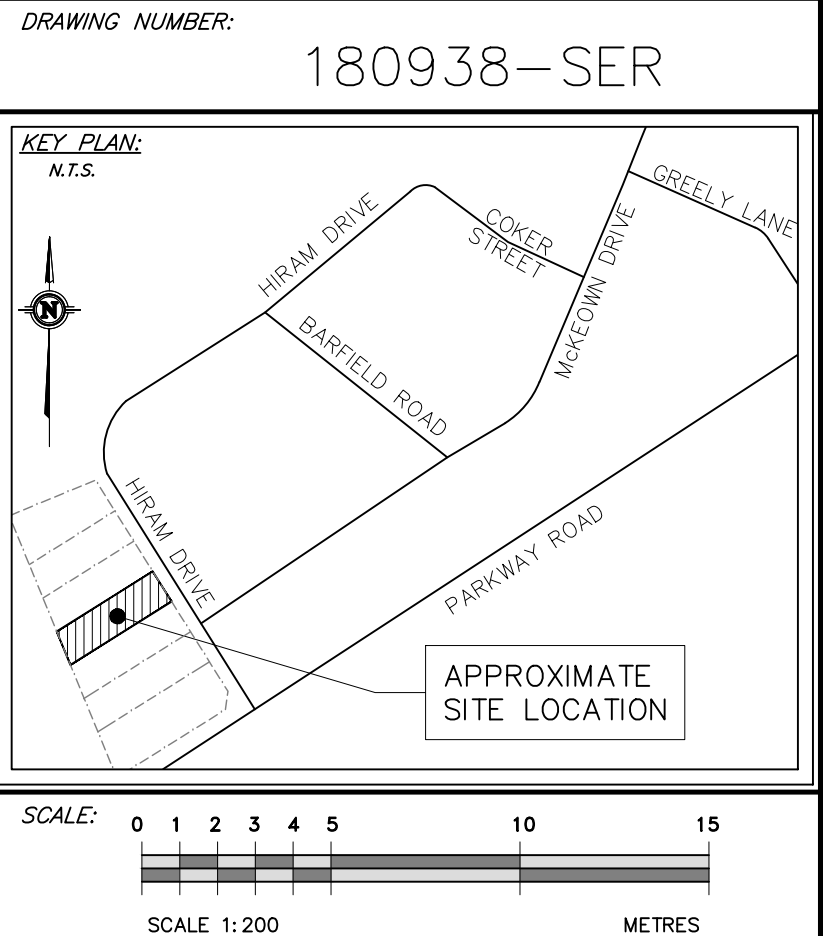
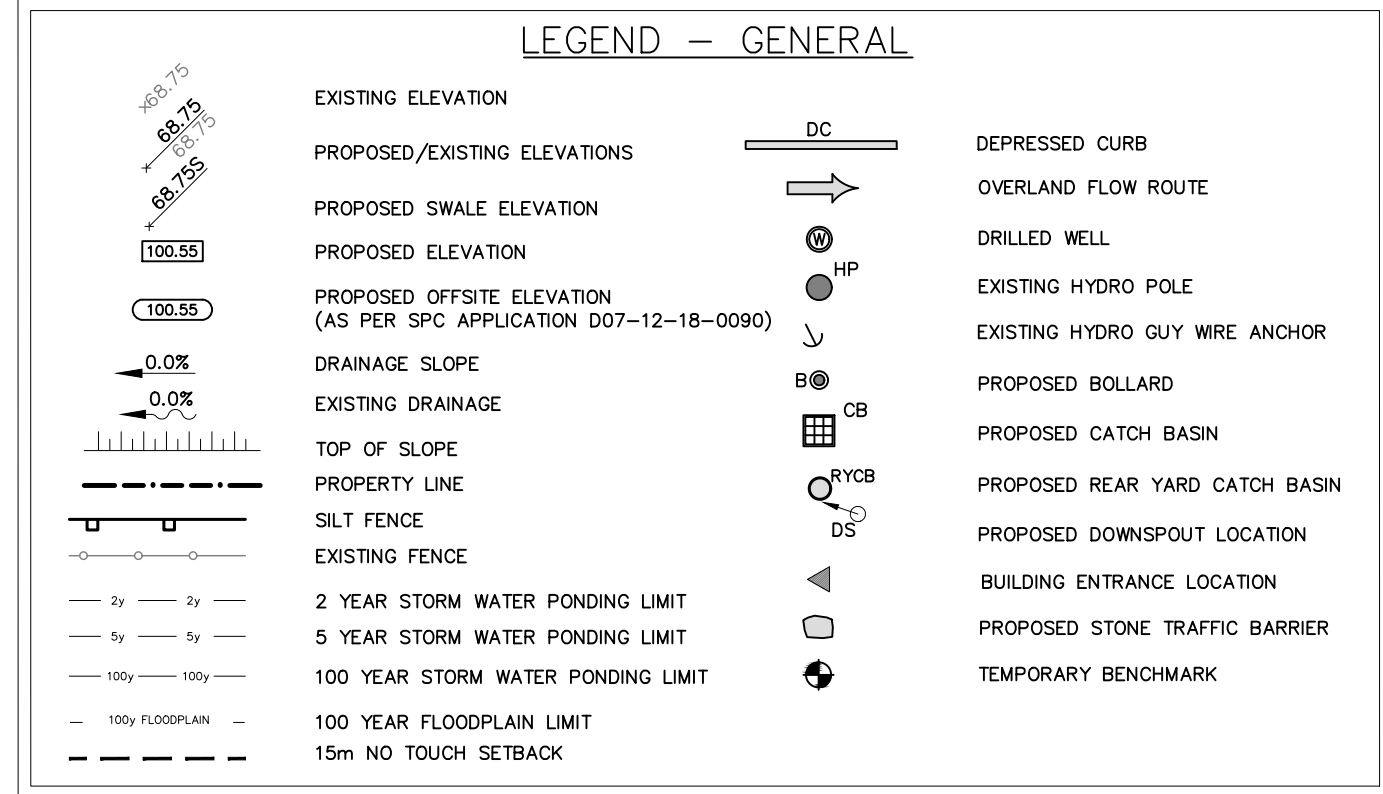


SERVICING NOTES:

- SUPPLY AND CONSTRUCT ALL SEWERS AND APPURTENANCES IN ACCORDANCE WITH THE CITY OF OTTAWA STANDARDS AND SPECIFICATIONS AND ONTARIO PROVINCIAL STANDARDS FOR ROADS AND PUBLIC WORKS.
- SPECIFICATIONS:

ITEM	SPEC. No.	CITY STD DWG No.
CATCH BASIN (600mm x 600mm)	OPSD 705.010	S2
SEWER SERVICE CONNECTION	OPSD 704.010	S11 & S11.1
CATCH BASIN & MANHOLE ADJUSTMENTS	OPSD 400.020	S19, S22 & S23
CATCH BASIN FRAME & COVER		S6 & S7
SEWER TRENCH		S9
DITCHED PIPE STORM SEWER (FERNBANK RD)		S31
DITCHED PIPE CATCH BASIN (FERNBANK RD)		
- SEWER TRENCH:
SITE SERVICES EXCAVATION, BEDDING & BACKFILL AS PER THE RECOMMENDATIONS OF THE GEOTECHNICAL INVESTIGATION PREPARED BY KOLLAARD ASSOCIATES INC.
- INSULATE ALL STORM PIPES THAT HAVE LESS THAN 1.5m COVER AND ALL SANITARY PIPES THAT HAVE LESS THAN 2.1m COVER WITH THERMAL INSULATION. PROVIDE 150mm CLEARANCE BETWEEN PIPE AND INSULATION.
- PIPE BEDDING, COVER AND BACKFILL ARE TO BE COMPACTED TO AT LEAST 98% OF THE STANDARD PROCTOR MAXIMUM DRY DENSITY.
- FLEXIBLE CONNECTIONS ARE REQUIRED FOR CONNECTION PIPES TO MANHOLES (FOR EXAMPLE KOR-N-SEAL, PSX: POSITIVE SEAL AND DURASEAL). SANITARY RUBBER GASKET TYPE JOINTS SHALL CONFORM TO CSA (B-182.2,3,4).
- THE OWNER SHALL REQUIRE THAT THE SITE SERVICING CONTRACTOR PERFORM FIELD TESTS FOR QUALITY CONTROL OF ALL SANITARY SEWERS. LEAKAGE TESTING SHALL BE COMPLETED IN ACCORDANCE WITH OPSS 410.07.16, 410.07.16.04 AND 407.07.24. DYE TESTING IS TO BE COMPLETED ON ALL SANITARY SERVICES TO CONFIRM PROPER CONNECTION TO THE SANITARY SEWER MAIN. THE FIELD TESTS SHALL BE PERFORMED IN THE PRESENCE OF A CERTIFIED PROFESSIONAL ENGINEER WHO SHALL SUBMIT A CERTIFIED COPY OF THE TEST RESULTS.
- STORM CATCH BASINS ARE TO HAVE 600mm SUMPS (AS PER SUMP DETAIL ON OPSD 701.010), UNLESS OTHERWISE INDICATED.
- BUILDING CONTRACTOR TO PROVIDE TEMPORARY ADDITIONAL GRANULAR BACKFILL ABOVE SHALLOW CULVERTS AND STORM SEWERS TO SUPPORT HEAVY CONSTRUCTION EQUIPMENT.
- CONTRACTOR TO TELEWISE (CCTV) ALL PROPOSED SEWERS, 200mmØ OR GREATER PRIOR TO BASE COURSE ASPHALT. UPON COMPLETION OF CONTRACT, THE CONTRACTOR IS RESPONSIBLE TO FLUSH AND CLEAN ALL SEWERS & APPURTENANCES TO MUNICIPAL SATISFACTION.



- ## GENERAL NOTES:
- All dimensions are in metres; all elevations are in metres and are geodetic.
 - Geodetic information for the site was obtained using GPS survey equipment connected to the CAN-Net Virtual Reference Station Network which provides real time GNSS (Global Navigation Satellite System) calibration data to precisely obtain the horizontal and vertical coordinates of a point within the NAD83 coordinate reference frame.
 - TBM = Nail on existing hydro pole. Elevation = 99.79.
 - This is not a legal survey.
 - Property boundary was derived from PLAN 4R-28109 (H.A. KEN SHIPMAN SURVEYING LTD. File No. 13-10481).
 - Contractor is responsible for location and protection of utilities.
 - Contractor to verify that appropriate permits have been acquired prior to any construction.
 - All dimensions to be verified on site by contractor prior to construction.
 - Client is responsible for acquiring all necessary permits. This drawing is not for construction until a building permit has been granted.
 - Inspection of rough grade by Kollaard Associates Inc. and City of Ottawa must be conducted prior to placement of topsoil or sod.
 - Hydro service to be installed according to the specifications of HydroOne and the Mechanical Engineer.
 - All materials and construction to be in accordance with City of Ottawa standards and Ontario Provincial Standards and Specifications; sewer and watermain material types; disinfection, provide minimum 2.4 metres of cover for water services, cathodic protection, City of Ottawa insulation specifications for watermain, pipe bedding, reinstatement of disturbed areas and leakage testing.
 - Any changes made to this plan must be verified and approved by Kollaard Associates Inc.
 - This drawing is part of Kollaard Associates design report # 180938.

No.	REVISION	DATE	BY
2	REVISED FOR SITE PLAN CONTROL	2020/04/29	RR
1	REVISED FOR SITE PLAN CONTROL	2020/01/29	RR
-	ISSUED FOR SITE PLAN CONTROL	2019/04/25	RR

Kollaard Associates
Engineers
(613) 860-0923
info@kollaard.ca

P.O. BOX 189, 210 PRESCOTT ST.
KEMPTVILLE, ONTARIO
K0G 1J0 FAX (613) 258-0475
http://www.kollaard.ca

CLIENT:
NAT GIUST
3223 WOODROFFE AVENUE
NEPEAN, ON K2J 4G5

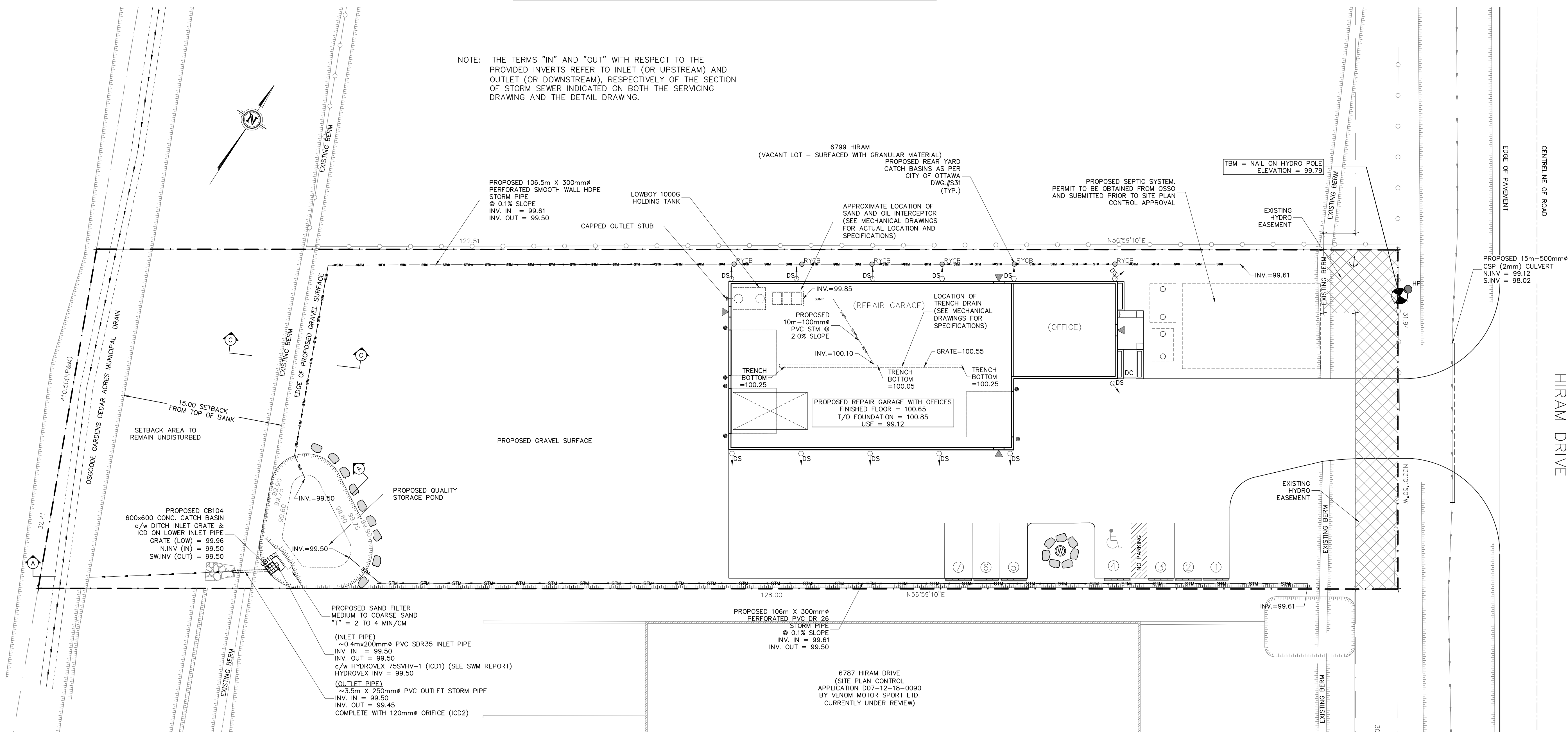
PROJECT:
PROPOSED REPAIR GARAGE BUILDING WITH OFFICES

LOCATION:
6793 HIRAM DRIVE
R.PLAN 4R-28109, PARTS 4 & 28
LOT 5, CONC. 4, OSGOODE,
OTTAWA, ON

DESIGNED BY: RR
CHECKED BY: SD
DRAWN BY: RR
APPROVED BY: SD
DATE: MARCH 19, 2019
KOLLAARD FILE NUMBER: 180938

DRAWING NUMBER: 180938-SER
DRAWING NAME: SITE SERVICING PLAN

NOTE: THE TERMS "IN" AND "OUT" WITH RESPECT TO THE PROVIDED INVERTS REFER TO INLET (OR UPSTREAM) AND OUTLET (OR DOWNSTREAM), RESPECTIVELY OF THE SECTION OF STORM SEWER INDICATED ON BOTH THE SERVICING DRAWING AND THE DETAIL DRAWING.



SITE SERVICING PLAN
SCALE = 1:200