

TOPOGRAPHIC DETAIL OF  
**PART OF LOT 8  
 CONCESSION 3 (RIDEAU FRONT)**  
 CITY OF OTTAWA

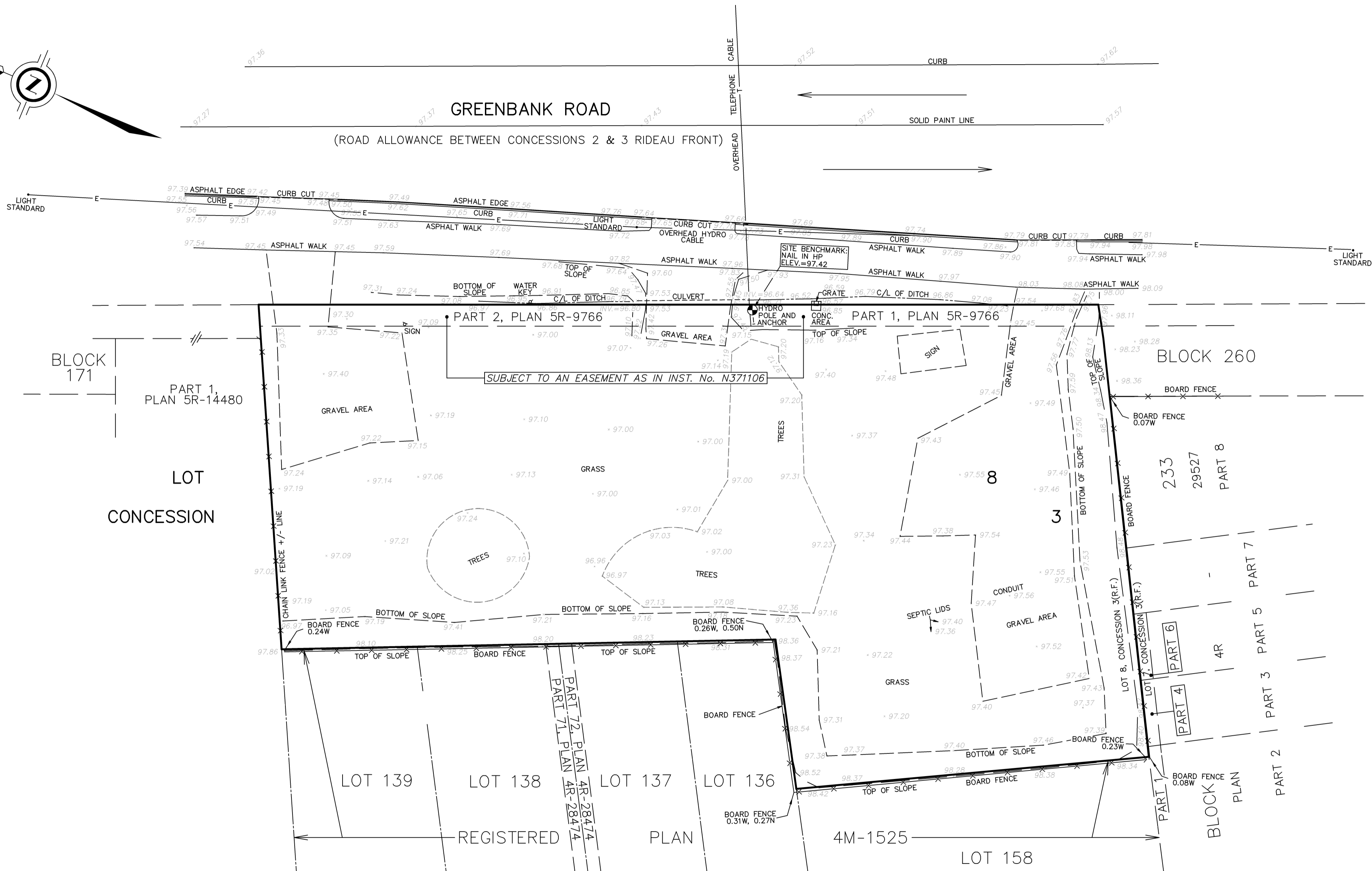
SCALE 1 : 250

J.D. BARNES LIMITED  
 METRIC DISTANCES AND/OR COORDINATES SHOWN ON THIS PLAN ARE IN METRES AND CAN BE CONVERTED TO FEET BY DIVIDING BY 0.3048.

**ELEVATION NOTE**  
 ELEVATIONS ARE GEODETIC AND ARE REFERRED TO THE PUBLISHED BENCHMARK No. 01196403710 HAVING AN ELEVATION OF 71.724M.

**LEGEND**

x	DENOTES	LOCATION OF TOPOGRAPHIC MEASUREMENT
xx.xx	DENOTES	ELEVATION OF MEASUREMENT
TC	DENOTES	TOP OF CULVERT
INV	DENOTES	BOTTOM OF CULVERT
HP	DENOTES	HYDRO POLE
ELEV.	DENOTES	ELEVATION



**J.D. BARNES LIMITED**  
 SURVEYING  
 MAPPING  
 GIS  
 LAND INFORMATION SPECIALISTS  
 2430 DON REID DRIVE, SUITE 204, OTTAWA, ON K1H 1E1  
 T: (613) 731-7244 F: (613) 731-8955 www.jdbarnes.com

DRAWN BY: NS	CHECKED BY: GZ	REFERENCE NO.: 18-10-057-00TOPO
-----------------	-------------------	------------------------------------

FILE: G:\18-10-057\00\Drawing\Topo\18-10-057-00Topo.dwg PLOTTED: 10/09/2018 10/25/2018