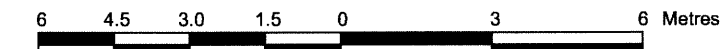


**LOT 46**  
**(South Daly Avenue)**  
**REGISTERED PLAN 6**  
**CITY OF OTTAWA**

Prepared by Annis, O'Sullivan, Vollebek Ltd.

Scale 1 : 150



**Metric**

DISTANCES SHOWN ON THIS PLAN ARE IN METRES AND CAN BE CONVERTED TO FEET BY DIVIDING BY 0.3048

Nov 18, 2013  
 Date

E.H. Herweyer O.L.S.

**Notes & Legend**

Denotes	
○ MH-ST	Maintenance Hole (Storm Sewer)
○ MH-S	Maintenance Hole (Sanitary)
— ST —	Underground Storm Sewer
— S —	Underground Sanitary Sewer
— W —	Underground Water
— G —	Underground Gas
— OHW —	Overhead Wires
○ UP	Utility Pole
□ CB	Catch Basin
○ FH	Fire Hydrant
⊗ WV	Water Valve
Inv.	Invert
T/G	Top of Grate
□ GM	Gas Meter
○	Deciduous Tree
○ B	Bollard
Fdn.	Foundation
CRW	Concrete Retaining Wall
CLF	Chain Link Fence
BF	Board Fence
∅	Diameter
+ 65.00	Location of Elevations
+ 65.00	Top of Concrete Curb Elevation
C/L	Centreline
—	Property Line

SITE AREA = 609.1 m<sup>2</sup>

BOUNDARY INFORMATION COMPILED FROM FROM OFFICE RECORDS.

**ELEVATION NOTES**

- Elevations shown are referred to geodetic datum.
- It is the responsibility of the user of this information to verify that the job benchmark has not been altered or disturbed and that its relative elevation and description agrees with the information shown on this drawing.

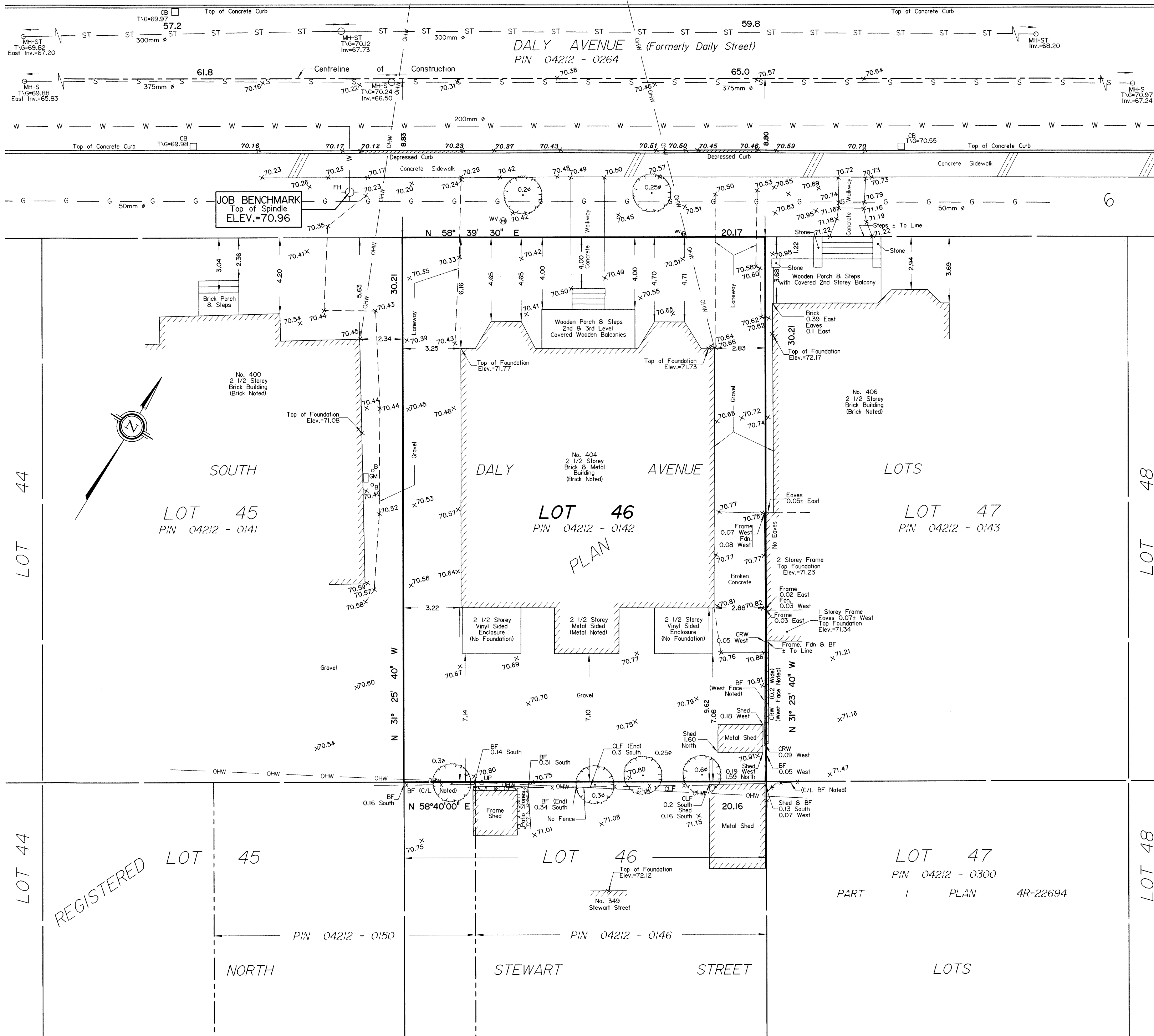
**UTILITY NOTES**

- This drawing cannot be accepted as acknowledging all of the utilities and it will be the responsibility of the user to contact the respective utility authorities for confirmation.
- Only visible surface utilities were located.
- A field location of underground plant by the pertinent utility authority is mandatory before any work involving breaking ground, probing, excavating etc.
- Underground Services scaled from City of Ottawa Utility Sheet 0-15-15.
- Inverts taken from City of Ottawa Engineering Drawing 2215 (Sheets 3 and 4 of 6)

© Annis, O'Sullivan, Vollebek Ltd., 2013. "THIS PLAN IS PROTECTED BY COPYRIGHT"

**ANNIS, O'SULLIVAN, VOLLEBEK LTD.**  
 14 Concourse Gate, Suite 500  
 Nepean, Ont. K2E 7S6  
 Phone: (613) 727-0850 / Fax: (613) 727-1079  
 Email: Nepean@avottd.com

Ontario Land Surveyors Job No. 14065-13 Kasuco L146 PL6 T F AE



\2013\14065-13\FINAL\14065-13\_Kasuco\_L146\_PL6\_T.F.dwg 18/11/2013 4:36:48 PM