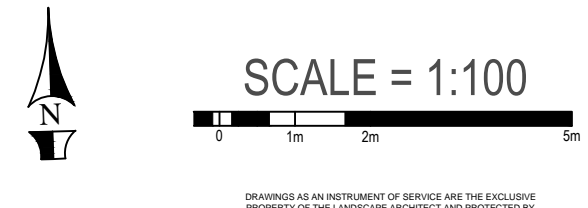
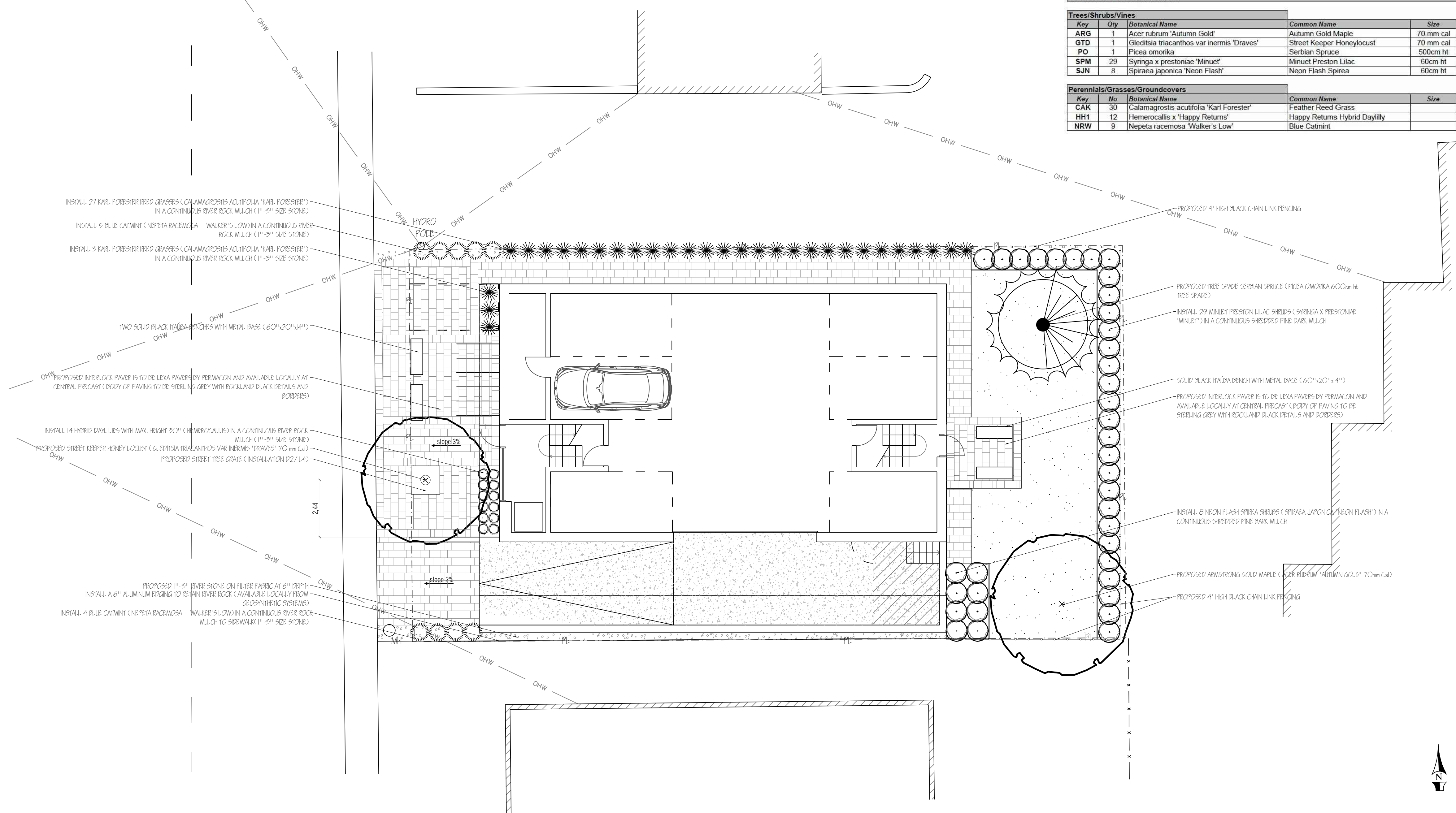


Trees/Shrubs/Vines						
Key	Qty	Botanical Name	Common Name	Size	Cdn	Notes
ARG	1	Acer rubrum 'Autumn Gold'	Autumn Gold Maple	70 mm cal	wb	
GTD	1	Gleditsia triacanthos var inermis 'Draves'	Street Keeper Honeylocust	70 mm cal	wb	
PO	1	Picea omorika	Sorbian Spruce	500cm ht	TREE SPADE	
SPM	29	Syringa x prestoniae 'Minuet'	Minuet Preston Lilac	60cm ht	3 gal pot	plant 30" o.c.
SJN	8	Spiraea japonica 'Neon Flash'	Neon Flash Spirea	60cm ht	pot	

Perennials/Grasses/Groundcovers						
Key	No	Botanical Name	Common Name	Size	Cdn	Notes
CAK	30	Calamagrostis acutifolia 'Karl Forester'	Feather Reed Grass		1 gal pot	plant 32" o.c.
HH1	12	Hemerocallis x 'Happy Returns'	Happy Returns Hybrid Daylily		1 gal pot	plant 18" o.c.
NRW	9	Nepeta racemosa 'Walker's Low'	Blue Catmint		1 gal pot	plant 30" o.c.

LEGEND

- PROPOSED EVERGREEN TREE
- PROPOSED DECIDUOUS TREE
- PROPOSED SHRUBS
- PROPOSED PERENNIALS
- LAWN AREA
- INTERLOCKING PAVERS (LEXA PAVERS AS NOTED)
- RIVER ROCK
- NEW 5' BLACK CHAIN LINK FENCE
- CONDUIT/DRAINAGE
- OVERHEAD WIRE
- PROPERTY LINE

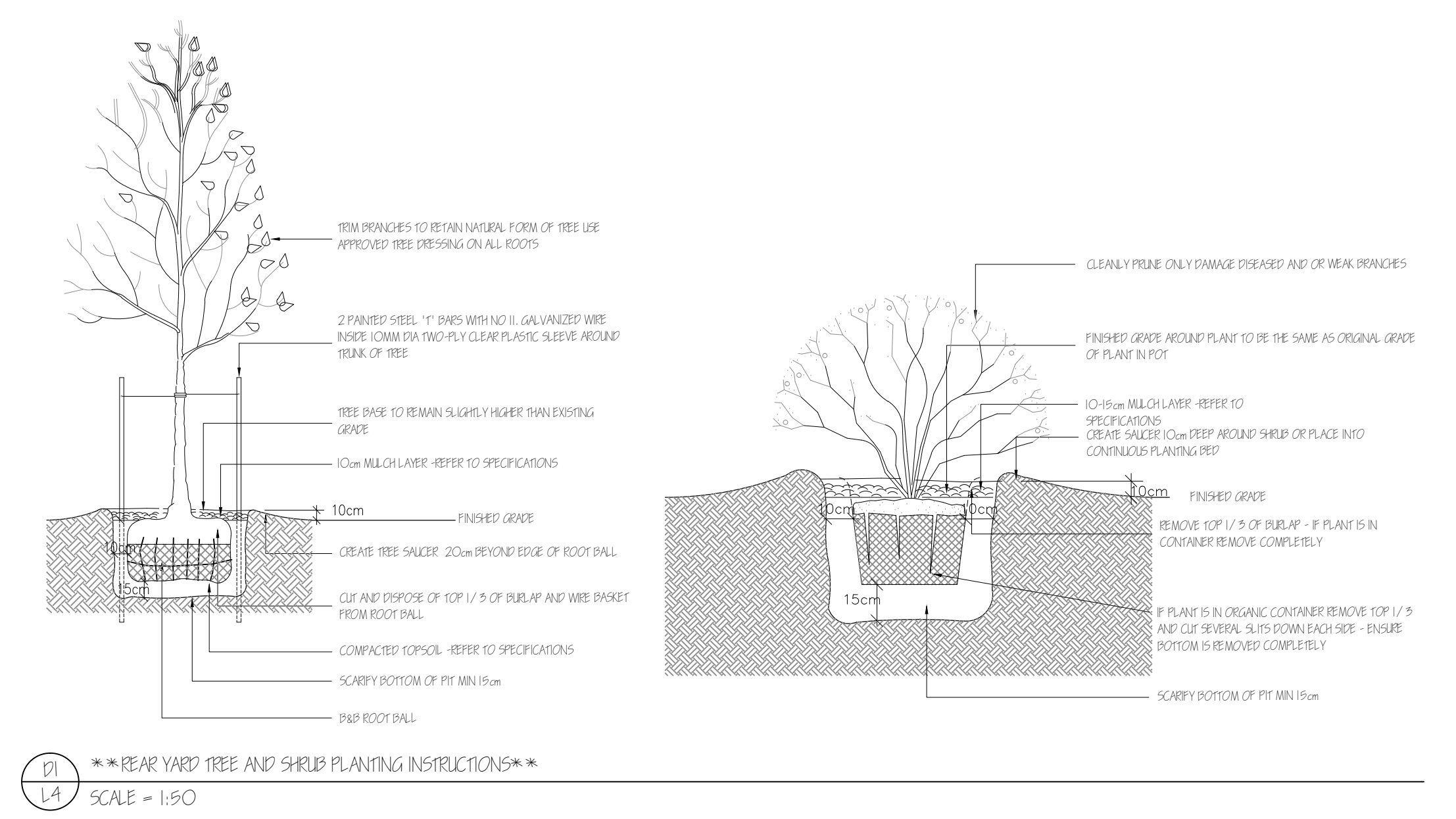


1	April 4/16	Issued for review
No.	Date	Revision note

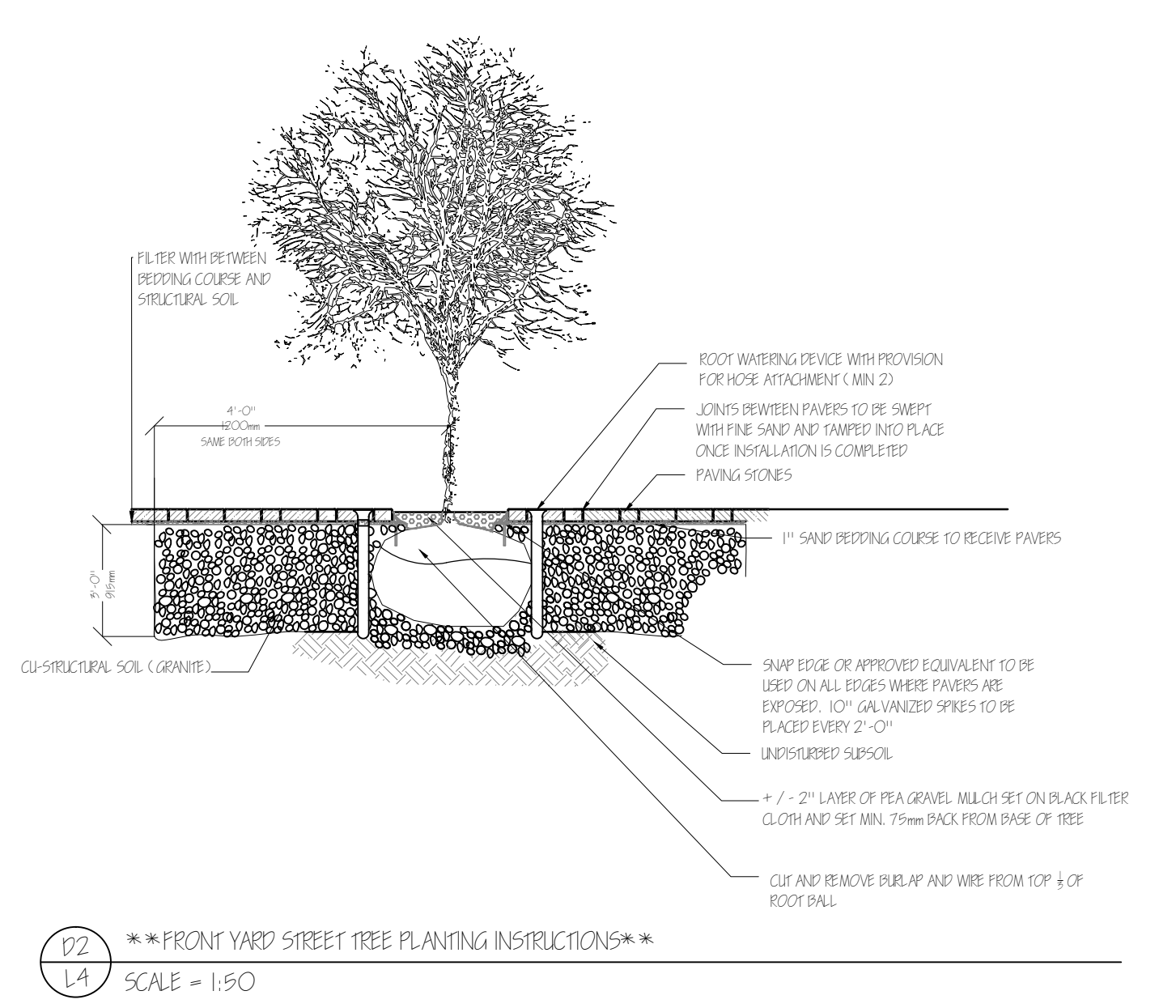
NOTES:
 *ALL BEDS TO BE MULCHED 10CM-15CM IN DEPTH FOLLOWING PLANTING WITH EXCEPTION TO THE NOTED RIVER ROCK AREA. RIVER ROCK IS TO BE PLACED ON FILTER FABRIC CLOTH AT A 10 CM-15CM DEPTH. ALL PERENNIALS AND SHRUBS ARE TO BE PLANTED IN CONTINUOUS SHREDDERED PLANTING SOIL BEDS MIN. 40 CM DEEP.

*THIS DRAWING IS TO BE USED FOR LANTING AND INTERLOCK LAYOUT ONLY. FOR GRADING REFER TO THE SITE PLAN PREPARED BY ENGINEER

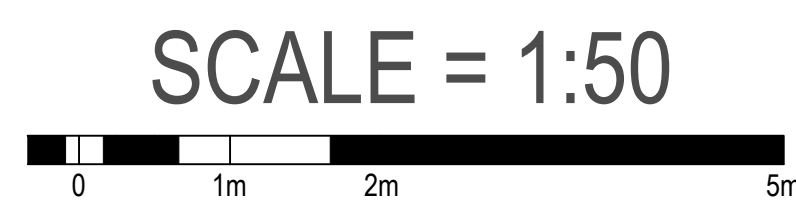
*ALL BOULDERS PLACED WITHIN THE 3 METER 'LINE OF SITE' LIMIT ARE TO BE LESS THAN 75CM IN HEIGHT ABOVE GRADE.



D1 ***REAR YARD TREE AND SHRUB PLANTING INSTRUCTIONS***
 SCALE = 1:50



D2 ***FRONT YARD STREET TREE PLANTING INSTRUCTIONS***
 SCALE = 1:50



John K. Szczepaniak
 LANDSCAPE ARCHITECT
 (613) 731-2777 fax: (613) 731-6989
 e-mail: jszla@rogers.com



Landscape Plan for
 Site Plan Submission

559 Riverdale Street,
 Ottawa

Landscape Plan

CHK: JKSZ
 DRW: VL
 DATE: March 14, 2016
 ID: 2016-02
 SCALE: AS SHOWN