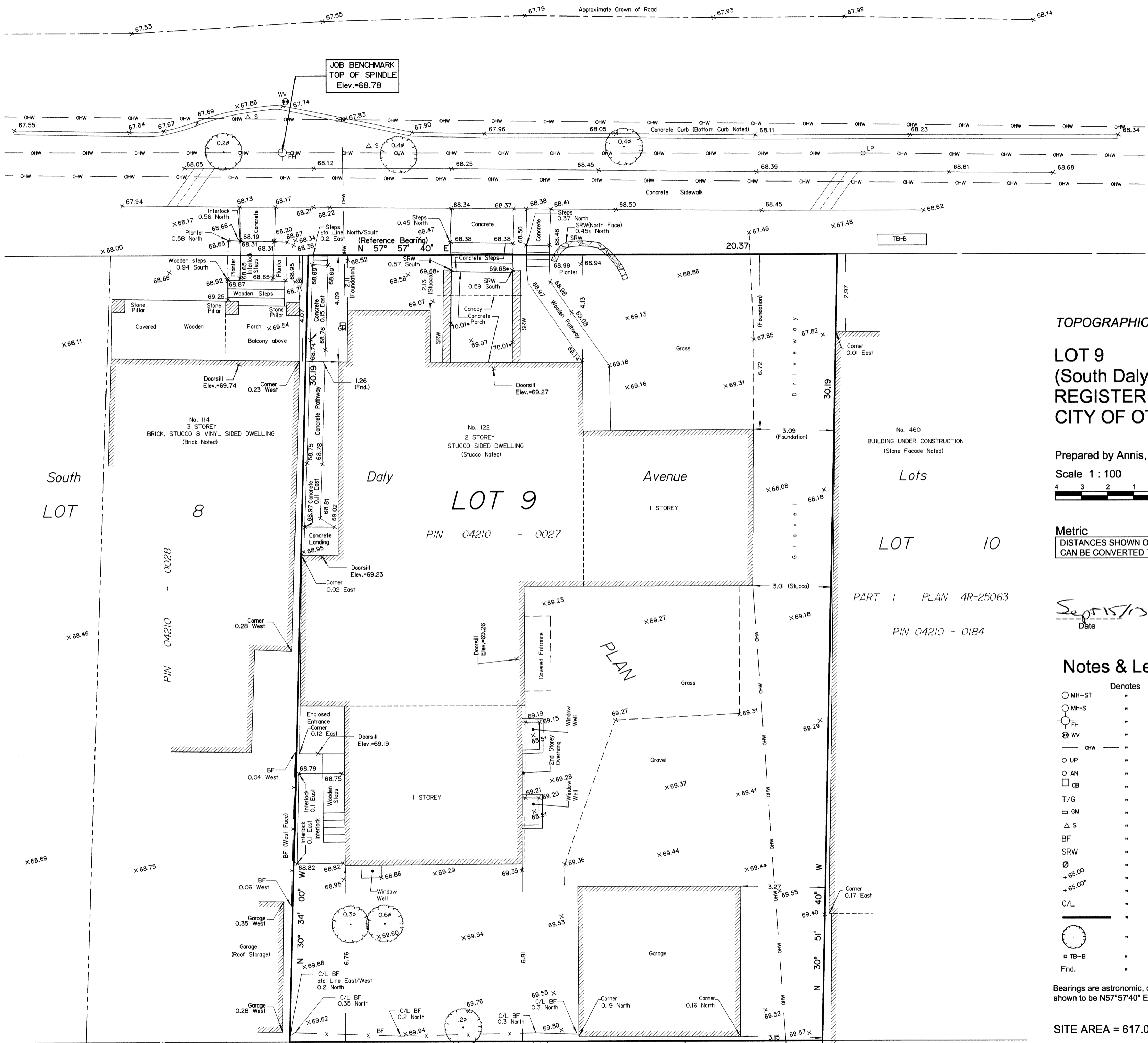
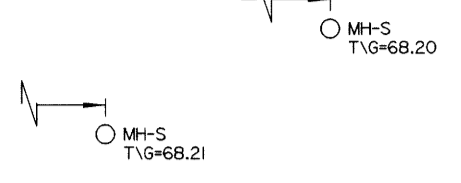
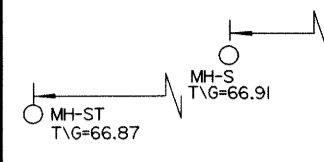
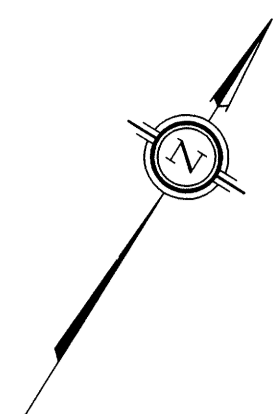


REGISTERED

DALY AVENUE  
(Formerly Daily Street)  
PIN 04210 - 0131



TOPOGRAPHICAL PLAN OF  
LOT 9  
(South Daly Avenue)  
REGISTERED PLAN 6  
CITY OF OTTAWA

Prepared by Annis, O'Sullivan, Vollebakk Ltd.  
Scale 1 : 100



Metric  
DISTANCES SHOWN ON THIS PLAN ARE IN METRES AND  
CAN BE CONVERTED TO FEET BY DIVIDING BY 0.3048

Date: Sept 15/13  
V. Andrew Snelap, O.L.S.

Notes & Legend

- | Symbol   | Denotes                        |
|----------|--------------------------------|
| ○ MH-ST  | Maintenance Hole (Storm Sewer) |
| ○ MH-S   | Maintenance Hole (Sanitary)    |
| ○ FH     | Fire Hydrant                   |
| ⊗ WV     | Water Valve                    |
| — OHW —  | Overhead Wires                 |
| ○ UP     | Utility Pole                   |
| ○ AN     | Anchor                         |
| □ CB     | Catch Basin                    |
| T/G      | Top of Grate                   |
| □ GM     | Gas Meter                      |
| △ S      | Sign                           |
| BF       | Board Fence                    |
| SRW      | Stone Retaining Wall           |
| ∅        | Diameter                       |
| + 68.00  | Location of Elevations         |
| + 68.00' | Top of Wall Elevation          |
| C/L      | Centreline                     |
| —        | Property Line                  |
| ○        | Deciduous Tree                 |
| □ TB-B   | Bell Terminal Box              |
| Fnd.     | Foundation                     |

Bearings are astronomic, derived from the southerly limit of Daly Street, shown to be N57°57'40" E on Plan 4R-25063.

SITE AREA = 617.0 m<sup>2</sup>

BOUNDARY INFORMATION COMPILED FROM PLANS AND FIELD SURVEY.

ELEVATION NOTES

- Elevations shown are referred to geodetic datum.
- It is the responsibility of the user of this information to verify that the job benchmark has not been altered or disturbed and that its relative elevation and description agrees with the information shown on this drawing.

UTILITY NOTES

- This drawing cannot be accepted as acknowledging all of the utilities and it will be the responsibility of the user to contact the respective utility authorities for confirmation.
- Only visible surface utilities were located.
- A field location of underground plant by the pertinent utility authority is mandatory before any work involving breaking ground, probing, excavating etc.

© Annis, O'Sullivan, Vollebakk Ltd. 2013. THIS PLAN IS PROTECTED BY COPYRIGHT

**ANNIS, O'SULLIVAN, VOLLEBEKK LTD.**  
14 Concourse Gate, Suite 500  
Nepean, Ont. K2E 7S6  
Phone: (613) 727-0850 / Fax: (613) 727-1079  
Email: [Nepean@annovll.com](mailto:Nepean@annovll.com)

Ontario  
**Land Surveyors**

Job No. 14309-13 Atwal Lt 9 Pl 6 T F