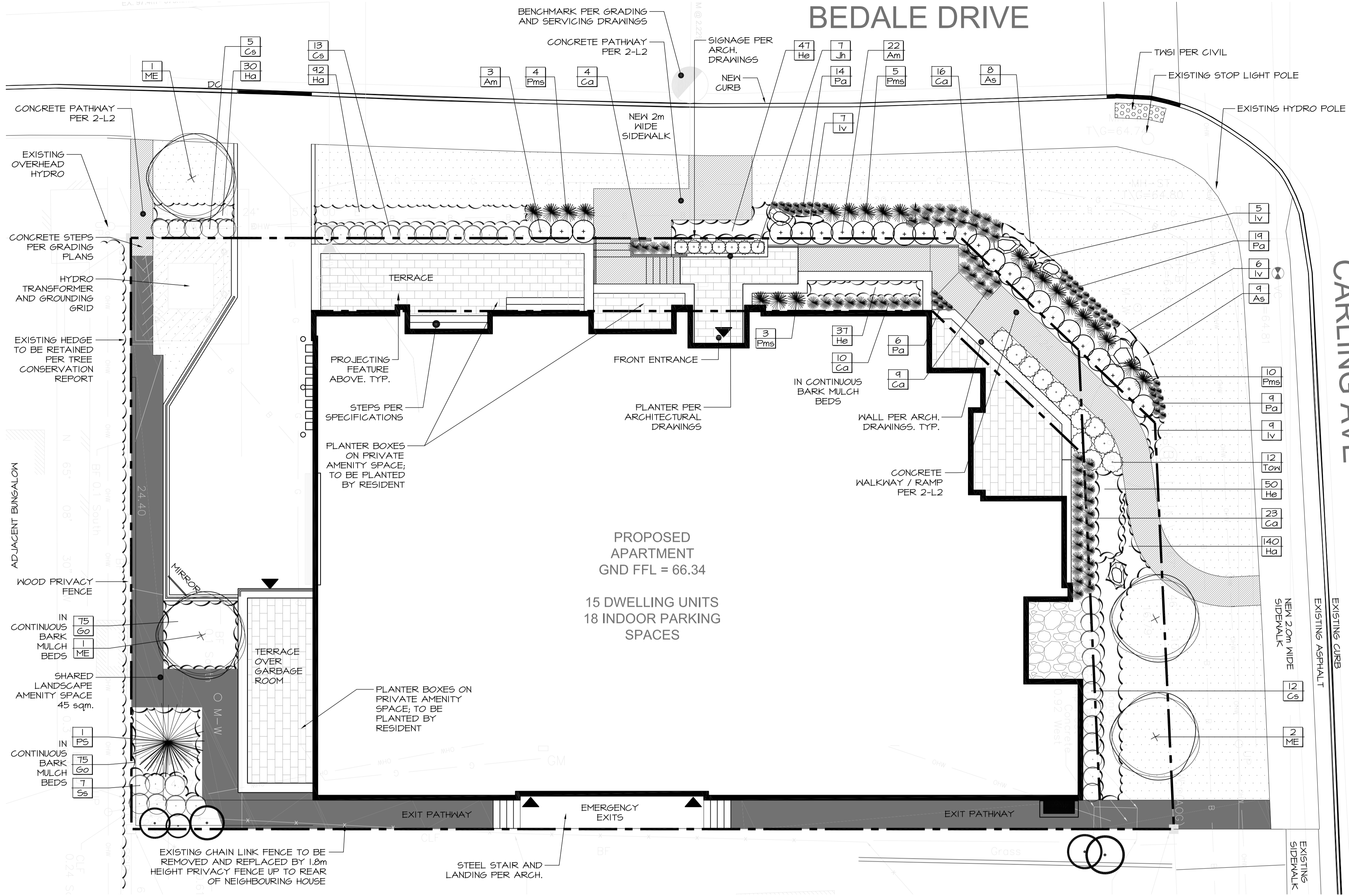


BEDALE DRIVE



- NOTES:**
- DO NOT SCALE DRAWINGS;
 - f.d. fountain landscape architecture IS NOT RESPONSIBLE FOR ACCURACY OF BASE INFORMATION;
 - REFER TO CIVIL ENGINEERING DRAWINGS FOR GRADING & SITE SERVICING INFORMATION;
 - THE CONTRACTOR IS RESPONSIBLE FOR CONFIRMING SITE CONDITIONS AND REPORTING ANY DISCREPANCIES TO THE LANDSCAPE ARCHITECT;
 - THE CONTRACTOR IS RESPONSIBLE FOR CONFIRMING EXACT LOCATIONS OF ALL UNDERGROUND SERVICES AND OBTAINING CLEARANCE FROM ALL APPLICABLE UTILITIES. PROPOSED WORKS FOUND TO BE IN CONFLICT WITH UNDERGROUND SERVICES MAY BE ADJUSTED AT THE DIRECTION OF THE LANDSCAPE ARCHITECT;
 - LANDSCAPE ELEMENTS SHOWN ARE SUBJECT TO THE FINAL LOCATION OF UNDERGROUND SERVICES AND UTILITIES;
 - DO NOT INSTALL TREES ON PROPERTY / LOT LINES OR WITHIN DRAINAGE EASEMENTS;
 - PERFORM WORK IN ACCORDANCE WITH DETAILS AND SPECIFICATIONS;
 - ALL PLANT MATERIAL SHALL BE No. 1 NURSERY STOCK AND SHALL MEET OR EXCEED THE SPECIFICATION OF THE Canadian Standards for Nursery Stock, AS PUBLISHED BY THE Canadian Nursery Landscape Association;
 - SPECIES SUBSTITUTIONS ARE NOT PERMITTED WITHOUT PRIOR WRITTEN APPROVAL OF THE LANDSCAPE ARCHITECT;
 - ALL PLANTING BEDS TO BE EDGED ON ALL SIDES WITH 150mm DEPTH 2"-5" RIVER ROCK FOR A WIDTH OF 30cm, AND MULCHED WITH 100mm DEPTH 3/4" - 1" PEA GRAVEL OVER LANDSCAPE FABRIC, EXCEPT WHERE OTHERWISE NOTED.

IMPORTANT NOTICE FOR CONTRACTOR:

THE CITY OF OTTAWA REQUIRES A Certificate of Completion (FI) Landscape Works TO BE SUBMITTED AND SEALED BY THE LANDSCAPE ARCHITECT. CONTRACTORS ARE RESPONSIBLE FOR FAMILIARIZING THEMSELVES WITH THE REQUIREMENTS OF THIS PROCESS AND PROVIDING SUFFICIENT NOTICE TO THE LANDSCAPE ARCHITECT TO CONDUCT SITE REVIEWS DURING INSTALLATION OF TREES. THE 2 YEAR WARRANTY PERIOD SHALL NOT COMMENCE UNTIL THE LANDSCAPE ARCHITECT HAS SUBMITTED THE FI Certificate.

PRIOR TO INSTALLATION OF TREES, THE DEVELOPER WILL CONTACT THE PLANNING AND FORESTRY SERVICES TO REVIEW THE SPECIES AND LOCATION OF TREES.



PRELIMINARY
NOT FOR CONSTRUCTION

Copyright Reserved
The Copyrights to all designs and drawings are the property of f.d. fountain landscape architecture. Unauthorized reproduction or use is forbidden.
DO NOT SCALE DRAWING



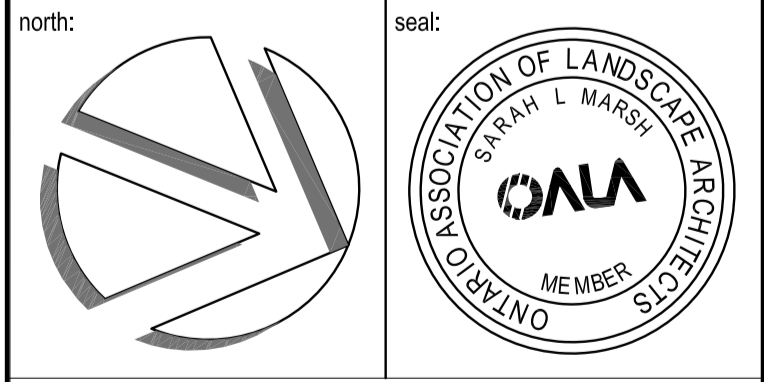
- LEGEND:**
- × 64.86 EXISTING ELEVATIONS
 - 65.68 × PROPOSED ELEVATIONS (BY OTHERS)
 - EXISTING TREE TO BE RETAINED PER TREE CONSERVATION REPORT
 - + SMALL DECIDUOUS TREES PER 2-L2
 - * CONIFEROUS TREES PER 3-L2
 - + DECIDUOUS SHRUBS IN CONTINUOUS BEDS, MULCHED AS INDICATED ON PLAN AND NOTE #11, AND AS PER 4-L2
 - * CONIFEROUS SHRUBS IN CONTINUOUS BEDS, MULCHED AS INDICATED ON PLAN AND NOTE #11, AND AS PER 5-L2
 - PERENNIALS AND ORNAMENTAL GRASSES IN CONTINUOUS BEDS, MULCHED AS INDICATED ON PLAN AND NOTE #11, AND AS PER 6-L2
 - 3 ○ T PLANT KEY
 - 135mm TOPSOIL AND SOD
 - 100mm DEPTH 3/4" - 1" DIA. PEA GRAVEL ON NON-WOVEN GEOTEXTILE
 - UNIT PAVEMENT TERRACE PER ARCHITECTURAL
 - CONCRETE PAVING PER 1-L2
 - ASPHALT PAVING PER 2-L2
 - BOULDER PER 7-L2

I LANDSCAPE PLAN
LI 1:100

KEY	QTY.	BOTANICAL NAME	COMMON NAME	SIZE / CONDITION / SPACING
DECIDUOUS TREES				
ME	4	Malus 'Emerald Spire'	Emerald Spire Flowering Crab	50mm cal. / W.B.
CONIFEROUS TREES				
PS	1	Pinus strobus	Eastern White Pine	180cm ht. / W.B.
DECIDUOUS SHRUBS				
Am	25	Aronia melanocarpa	Autumn Magic Chokeberry	90cm ht. / specimen quality
Cs	30	Cornus sericea 'Farrow'	Arctic Fire Dogwood	#3 Pot, 0.1m o/c
Ss	7	Sorbarium sorbifolia	False Spirea	#3 pot, 0.8m o/c
CONIFEROUS SHRUBS				
Jh	7	Juniperus horizontalis 'Blue Chip'	Blue Chip Juniper	#3 Pot, 0.8m o/c
Pms	22	Pinus mugo 'Slowmound'	Slowmound Mugo Pine	#3 Pot, 0.1m o/c
Tow	12	Thuja occidentalis 'Little Giant'	Little Giant Arborvitae	#3 Pot, 0.8m o/c
PERENNIALS & GRASSES				
As	17	Artemisia schmidtiana 'Silver Mound'	Silver Mound Wormwood	#1 Pot, 30cm o/c
Ca	62	Calamagrostis arundinacea 'Karl Foerster'	Feather Reed Grass	#1 Pot, 50cm o/c
Go	150	Galium odoratum	Sweet Woodruff	#1 Pot, 35cm o/c
He	134	Hemerocallis 'Ruby Stella'	Ruby Stella Day Lily	#1 Pot, 30cm o/c
Ha	262	Heuchera x 'Autumn Leaves'	Autumn Leaves Coral Bells	#1 Pot, 30cm o/c
Iv	27	Iris versicolor	Blue Flag Iris	#1 Pot, 50cm o/c
Pa	48	Pennisetum alopecuroides 'Little Bunny'	Little Bunny Fountain Grass	#1 Pot, 30cm o/c

3	re-issued for site plan	10/13/2016	SM
2	issued for client review	09/29/2016	SM
1	issued for site plan	02/02/2016	SM
0	issued for client review	01/28/2016	HM
No.	Revision / description	mm/dd/yyyy	by

f.d. fountain
landscape architecture
1735 courtwood crescent, suite 3
ottawa, ontario
K2C 3J2 CANADA
t 613. 216. 2534
f 613. 216. 2538
www.fdfountain.com

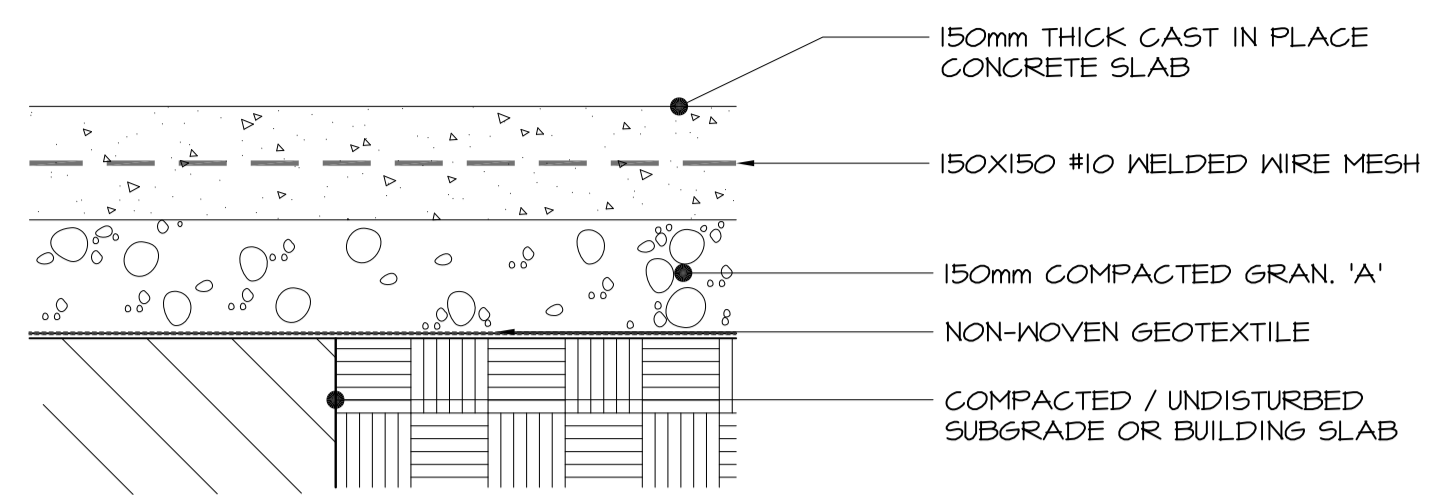


project:
CARLING LOWRISE
3368 Carling Ave

drawing:
LANDSCAPE PLAN

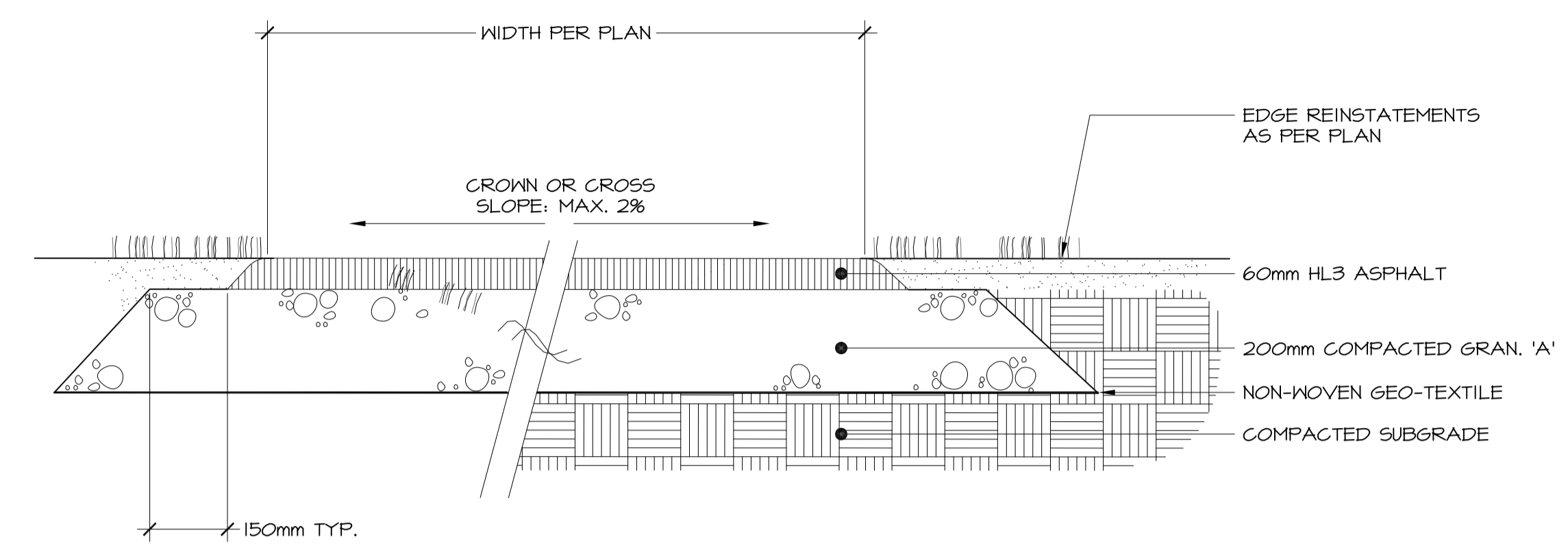
designed: SM/HM	drawn: HM	project no.: C 15-71
date: January 2016	scale: as noted	dwg. no.: L1 of 2

owner / client:

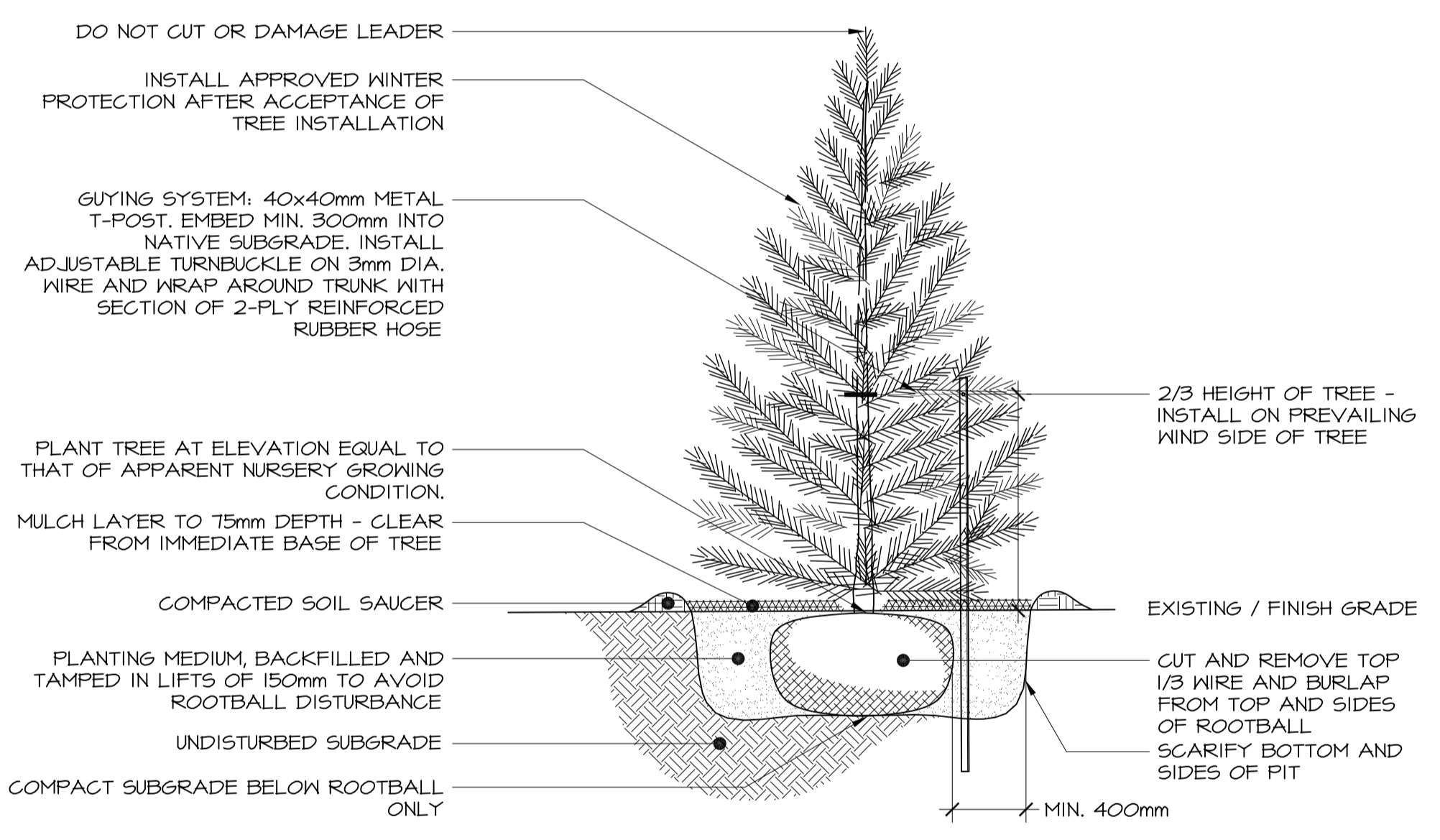


NOTES:
SLOPE SURFACE PER GRADING PLANS IN DIRECTION OF CROWN / CROSS SLOPE AND OTHER PAVED SURFACES TO PROVIDE POSITIVE DRAINAGE.
DEPTH OF GRANULAR 'A' BASE SHALL BE MIN. 200mm DEPTH ON COMPACTED / UNDISTURBED SUBGRADE OR TO DEPTH REQUIRED PER ARCHITECTURAL / CIVIL PLANS ON BUILDING SLAB.
CONCRETE SHALL BE 30MPa (4000 PSI) WITH 5-7% AIR ENTRAINMENT AND LIGHT BROOM FINISH.
EXPANSION JOINTS: 13mm THICK BITUMINOUS FIBRE BOARD WITH 300mm, 10m JOINTS @ 600mm O.C. GREASED OR SLEEVED ON ONE END.
SAW-CUT JOINTS: TO 10mm DEPTH.
SEE PLAN FOR JOINTING LAYOUT.

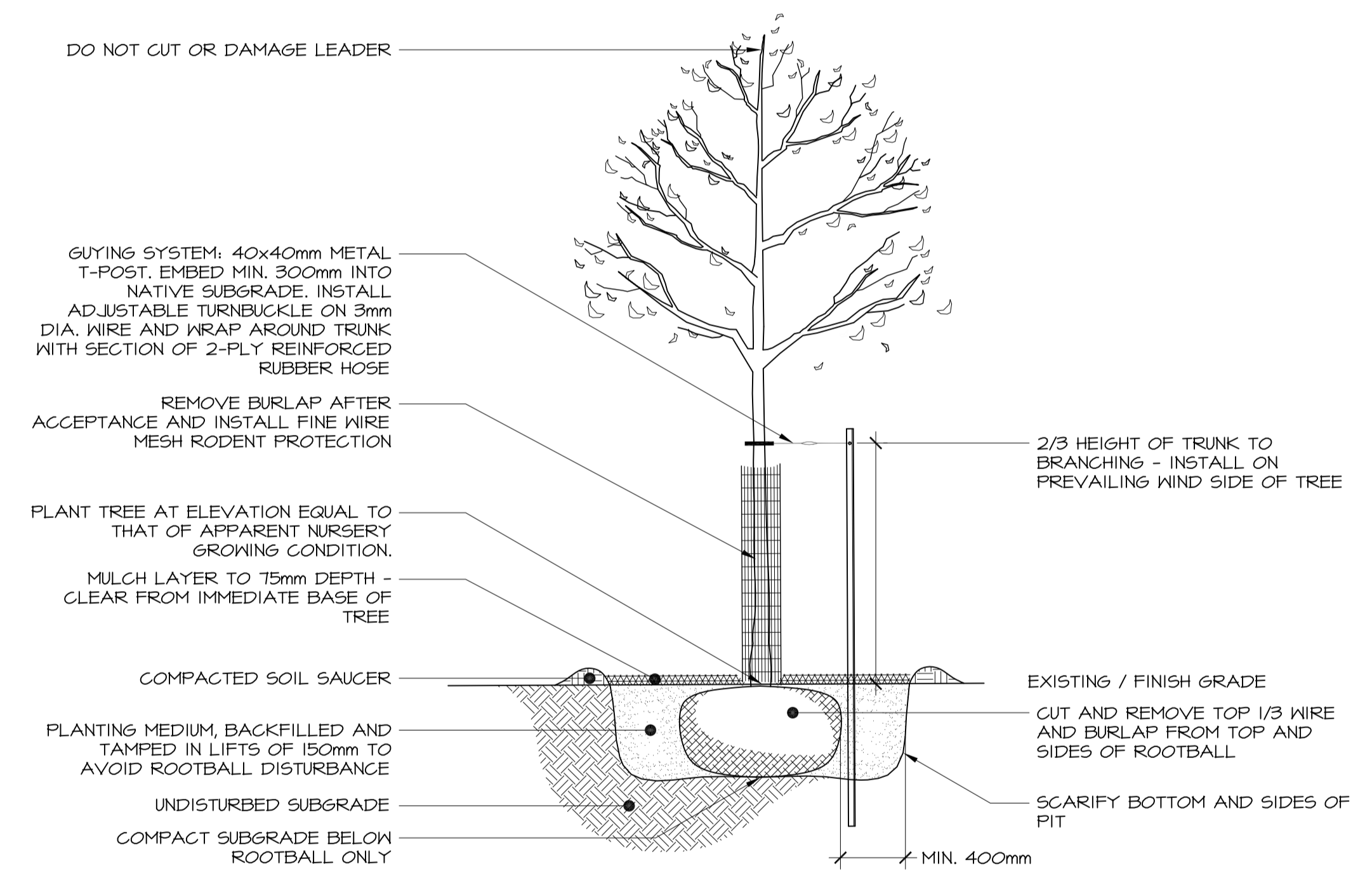
1 CONCRETE PAVING
L2 nts



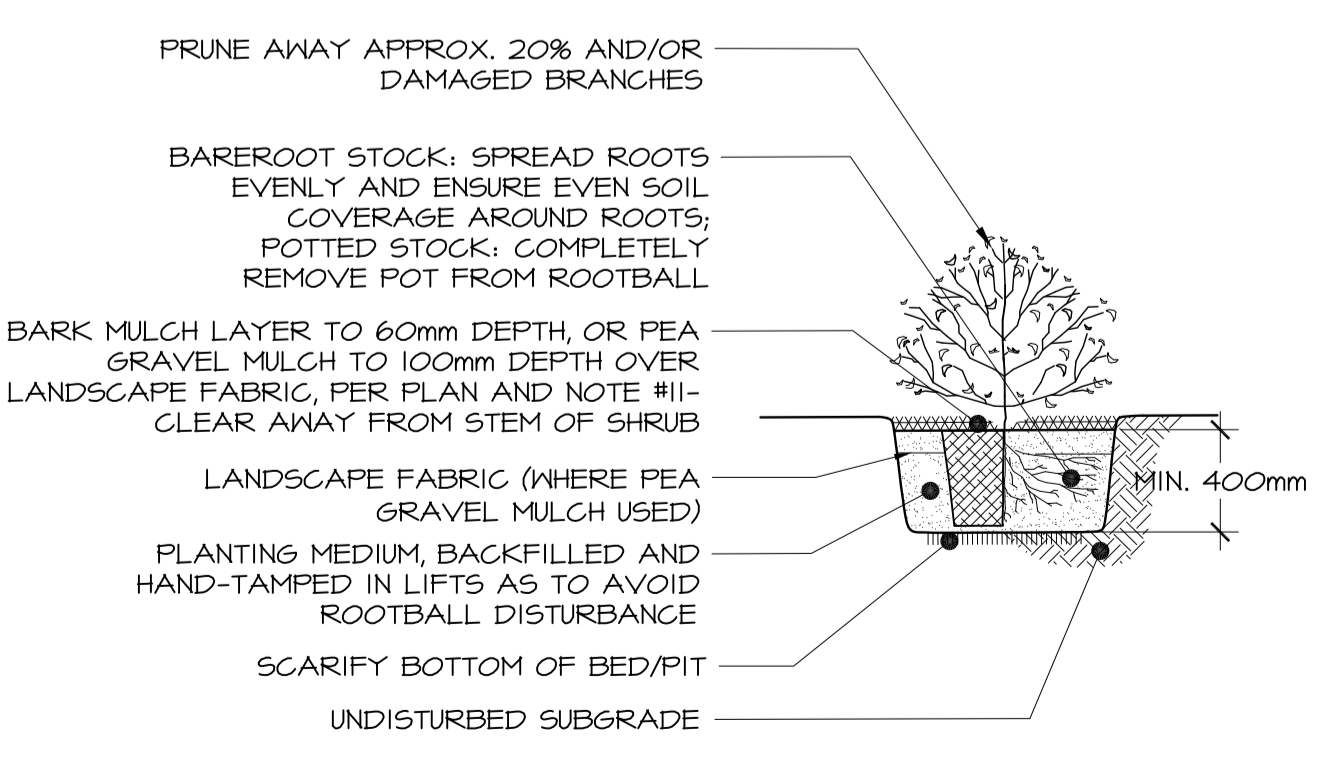
2 ASPHALT PAVING
L2 nts



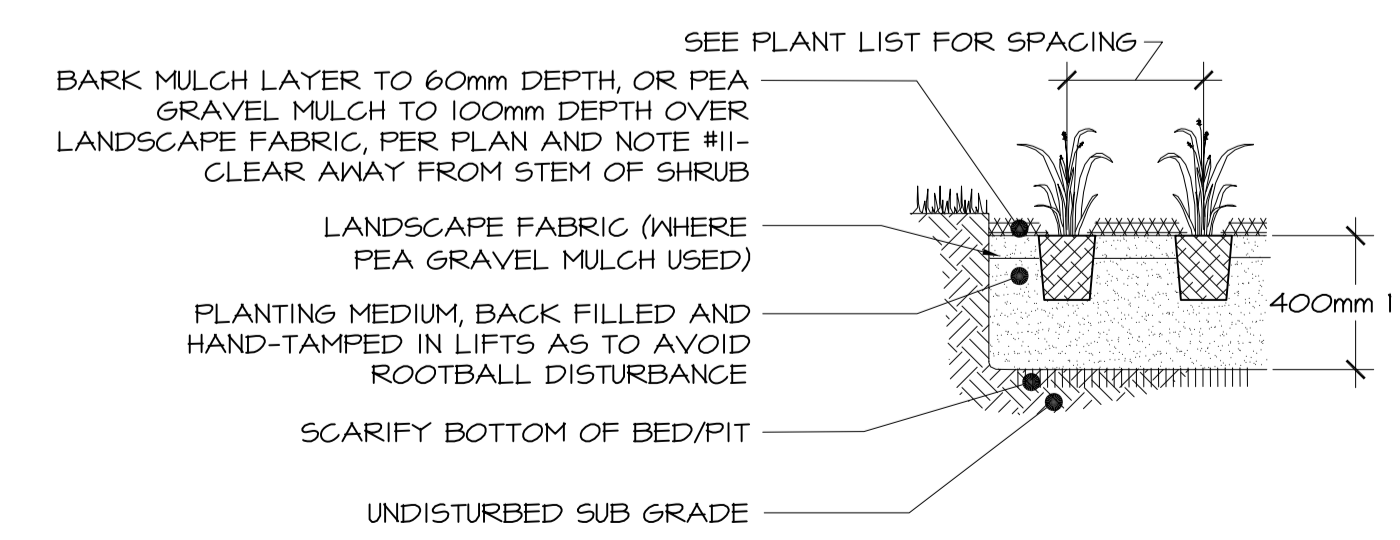
4 CONIFEROUS TREE PLANTING
L2 nts



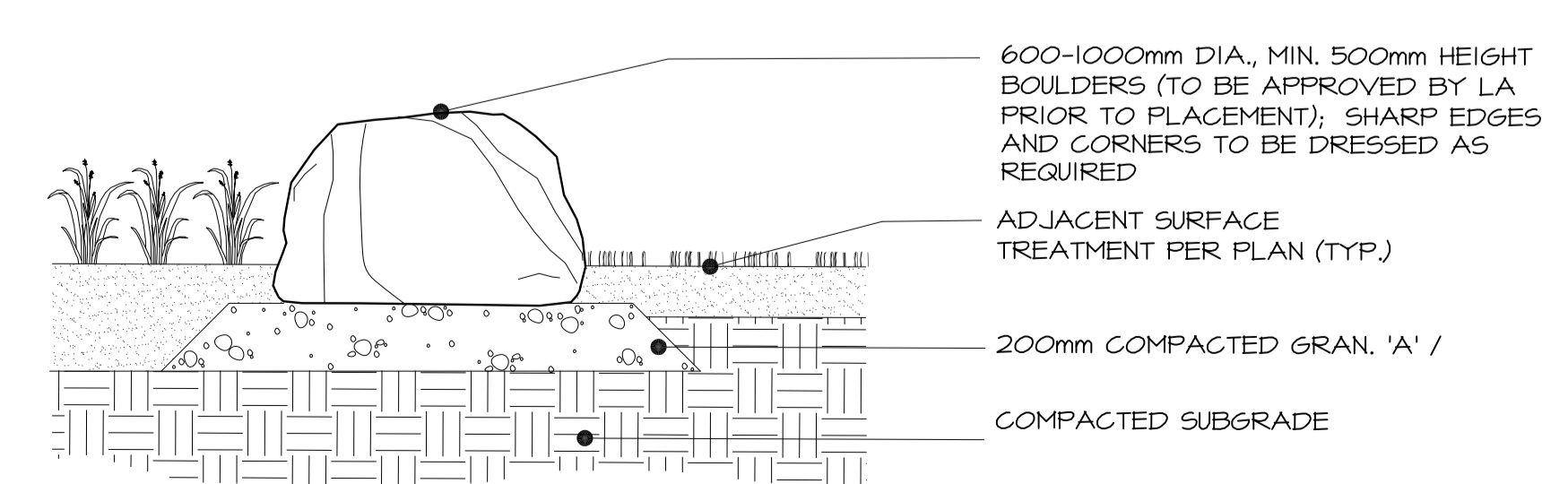
3 DECIDUOUS TREE PLANTING
L2 nts



5 SHRUB PLANTING
L2 nts



6 PERENNIAL PLANTING
L2 nts



7 BOULDER
L2 nts

PRELIMINARY
NOT FOR CONSTRUCTION

3	re-issued for site plan	10/13/2016	SM
2	for client review	09/29/2016	SM
1	issued for site plan	02/02/2016	SM
0	issued for client review	01/28/2016	HM
No.	Revision / description	mm/dd/yyyy	by

f.d. fountain
landscape architecture

1735 courtwood crescent, suite 3
ottawa, ontario
K2C 3J2 CANADA
t 613. 216. 2934
f 613. 216. 2938

www.fdfountain.com

north: seal:

project: **CARLING LOWRISE**
3368 Carling Ave

drawing: **CONSTRUCTION AND PLANTING DETAILS**

designed: SM/HM	drawn: HM	project no.: C 15-71
date: January 2016	scale: as noted	dwg. no.: L2 of 2