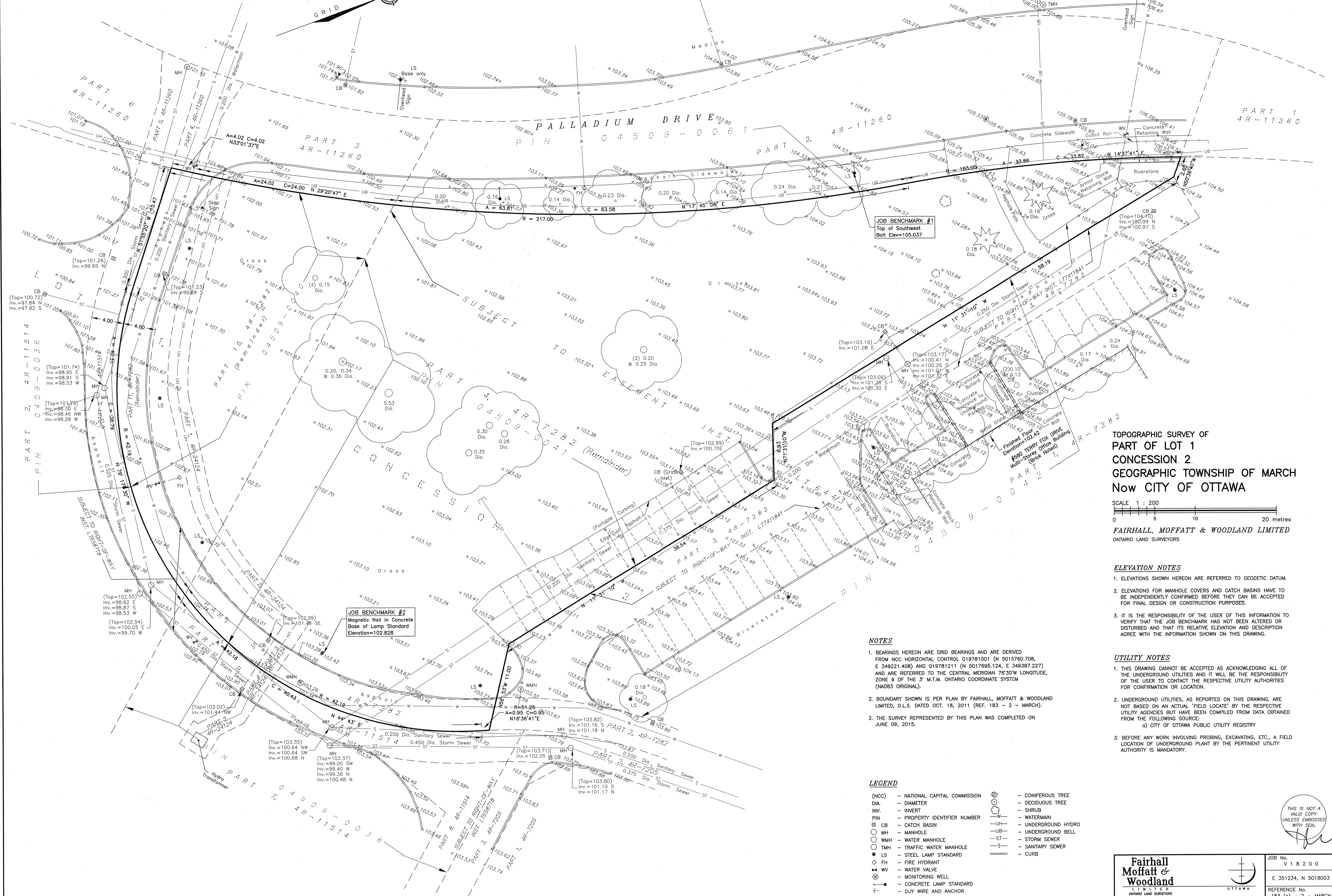


METRIC
 DISTANCES AND ELEVATIONS SHOWN ON THIS PLAN ARE IN METRES
 AND CAN BE CONVERTED TO FEET BY DIVIDING BY 0.3048



**TOPOGRAPHIC SURVEY OF
 PART OF LOT 1
 CONCESSION 2
 GEOGRAPHIC TOWNSHIP OF MARCH
 Now CITY OF OTTAWA**

SCALE 1 : 200
 0 5 10 20 metres
FAIRHALL, MOFFATT & WOODLAND LIMITED
 ONTARIO LAND SURVEYORS

- ELEVATION NOTES**
- ELEVATIONS SHOWN HEREON ARE REFERRED TO GEODETIC DATUM.
 - ELEVATIONS FOR MANHOLE COVERS AND CATCH BASINS HAVE TO BE INDEPENDENTLY CONFIRMED BEFORE THEY CAN BE ACCEPTED FOR FINAL DESIGN OR CONSTRUCTION PURPOSES.
 - IT IS THE RESPONSIBILITY OF THE USER OF THIS INFORMATION TO VERIFY THAT THE JOB BENCHMARK HAS NOT BEEN ALTERED OR DISTURBED AND THAT ITS RELATIVE ELEVATION AND DESCRIPTION AGREE WITH THE INFORMATION SHOWN ON THIS DRAWING.

- UTILITY NOTES**
- THIS DRAWING CANNOT BE ACCEPTED AS ACKNOWLEDGING ALL OF THE UNDERGROUND UTILITIES AND IT WILL BE THE RESPONSIBILITY OF THE USER TO CONTACT THE RESPECTIVE UTILITY AUTHORITIES FOR CONFIRMATION OR LOCATION.
 - UNDERGROUND UTILITIES, AS REPORTED ON THIS DRAWING, ARE NOT BASED ON AN ACTUAL 'FIELD LOCATE' BY THE RESPECTIVE UTILITY AGENCIES BUT HAVE BEEN COMPILED FROM DATA OBTAINED FROM THE FOLLOWING SOURCE:
 a) CITY OF OTTAWA PUBLIC UTILITY REGISTRY
 - BEFORE ANY WORK INVOLVING PROBING, EXCAVATING, ETC., A FIELD LOCATION OF UNDERGROUND PLANT BY THE PERTINENT UTILITY AUTHORITY IS MANDATORY.

- NOTES**
- BEARINGS HEREON ARE GRID BEARINGS AND ARE DERIVED FROM NCC HORIZONTAL CONTROL 019781001 (N 5015760.708, E 349221.408) AND 019781211 (N 5017695.124, E 349387.227) AND ARE REFERRED TO THE CENTRAL MERIDIAN 76°30'W LONGITUDE, ZONE 9 OF THE 3' M.T.M. ONTARIO COORDINATE SYSTEM (NAD83 ORIGINAL).
 - BOUNDARY SHOWN IS PER PLAN BY FAIRHALL, MOFFATT & WOODLAND LIMITED, O.S.L. DATED OCT. 18, 2011 (REF. 183 - 2 - MARCH).
 - THE SURVEY PRESENTED BY THIS PLAN WAS COMPLETED ON JUNE 09, 2015.

LEGEND

| | | | |
|-------|-------------------------------|---|---------------------|
| (NCC) | - NATIONAL CAPITAL COMMISSION | ☼ | - CONIFEROUS TREE |
| DIA. | - DIAMETER | ○ | - DECIDUOUS TREE |
| INV. | - INVERT | — | - SHRUB |
| PIN | - PROPERTY IDENTIFIER NUMBER | — | - WATERMAIN |
| CB | - CATCH BASIN | — | - UNDERGROUND HYDRO |
| MH | - MANHOLE | — | - UNDERGROUND BELL |
| WMH | - WATER MANHOLE | — | - STORM SEWER |
| TMH | - TRAFFIC WATER MANHOLE | — | - SANITARY SEWER |
| LS | - STEEL LAMP STANDARD | — | - CURB |
| FH | - FIRE HYDRANT | | |
| WV | - WATER VALVE | | |
| ⊙ | - MONITORING WELL | | |
| ⊙ | - CONCRETE LAMP STANDARD | | |
| — | - GUY WIRE AND ANCHOR | | |
| — | - BOLLARD | | |
| — | - SIGN | | |

**Fairhall
 Moffatt &
 Woodland**
 ONTARIO LAND SURVEYORS
 Surveying and Land Information Services
 100-685 VICTORIA AVENUE, KANATA, ONTARIO K2L 4B6
 TEL: (613) 591-2580 FAX: (613) 591-1495
 www.fmw.on.ca

OTAWA

JOB No. V 18200
 E 351234, N 5018003
 REFERENCE No. 183 (c) - 2 - MARCH
 S:\085\1820\DWG\2015-06-22\TPT82V.DWG (15)

© COPYRIGHT 2015. REPRODUCTION, ALTERATION OR DISTRIBUTION OF THIS PLAN WITHOUT THE WRITTEN CONSENT OF FAIRHALL, MOFFATT & WOODLAND LIMITED IS PROHIBITED.

THIS IS NOT A VALID COPY UNLESS EMBOSSED WITH SEAL