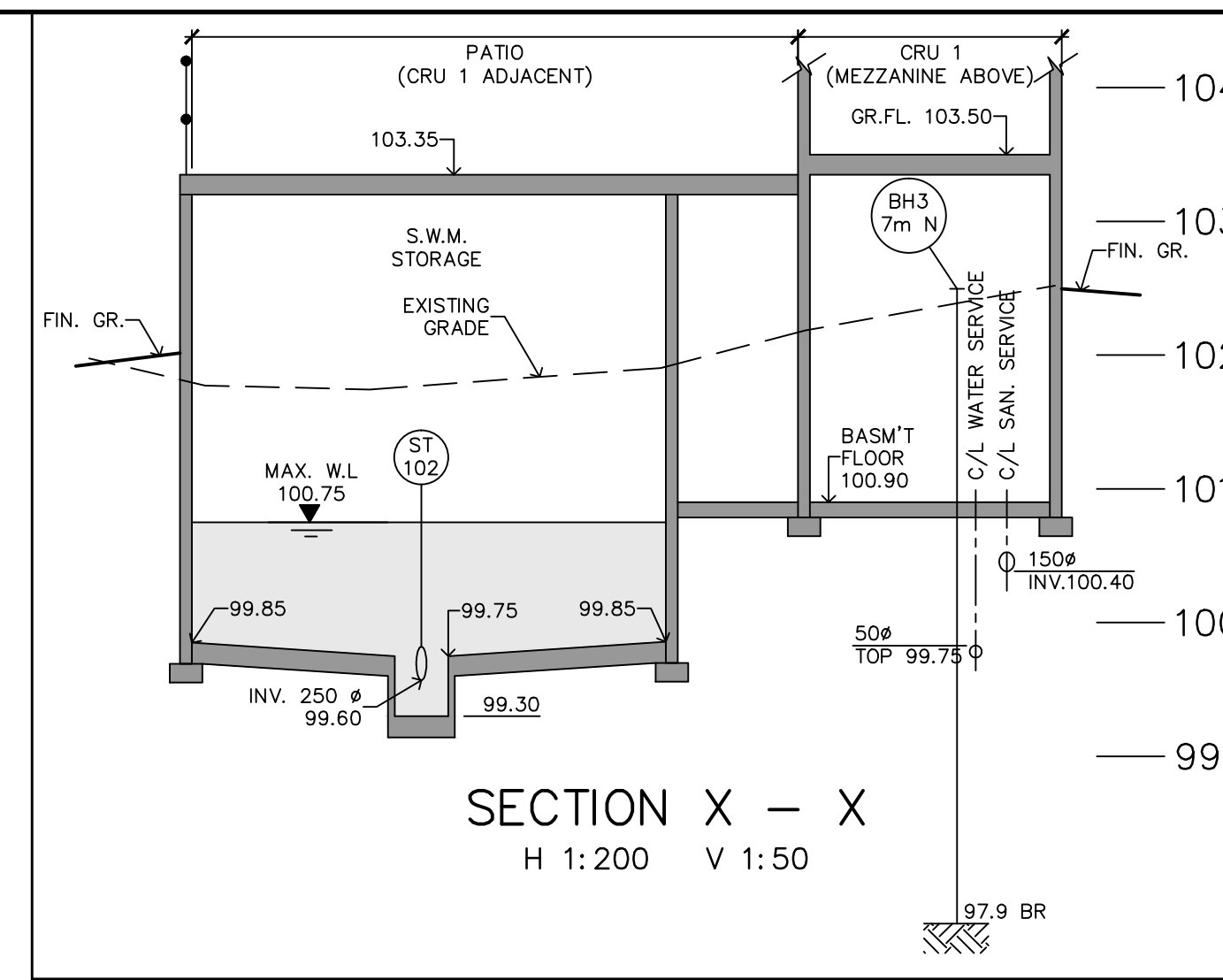
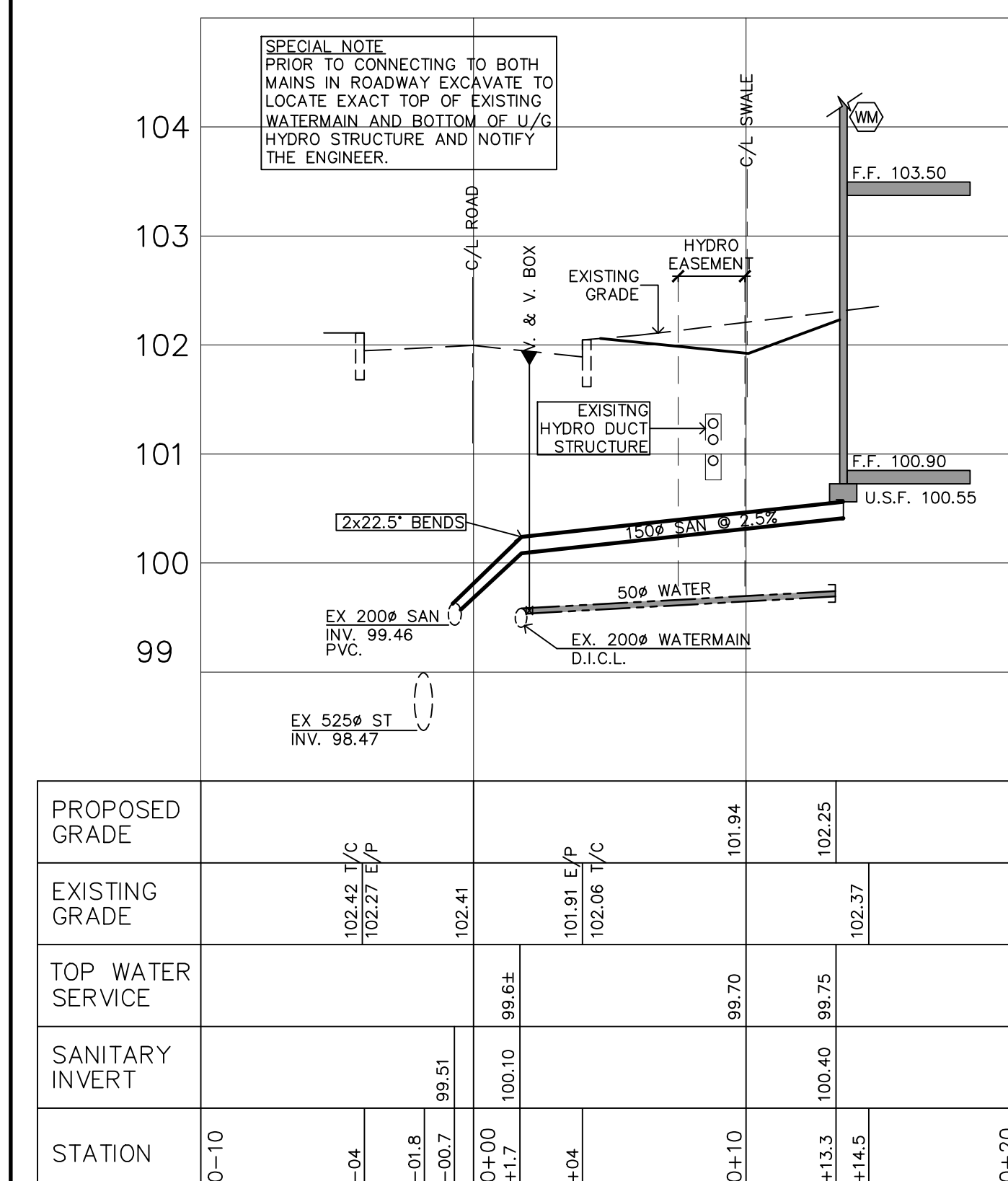


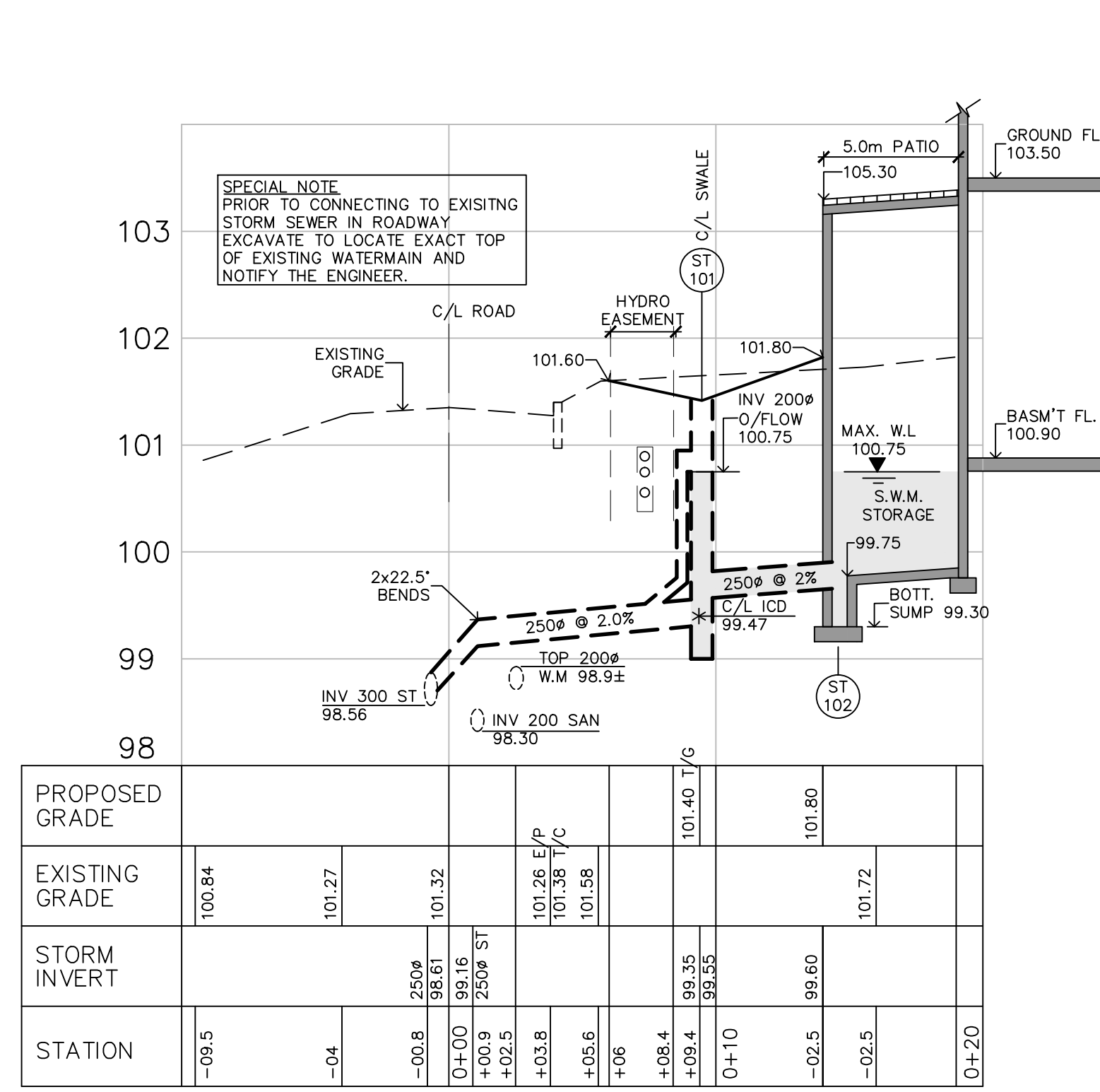
STORM SEWER/STORAGE PROFILE  
H 1:250 V 1:50



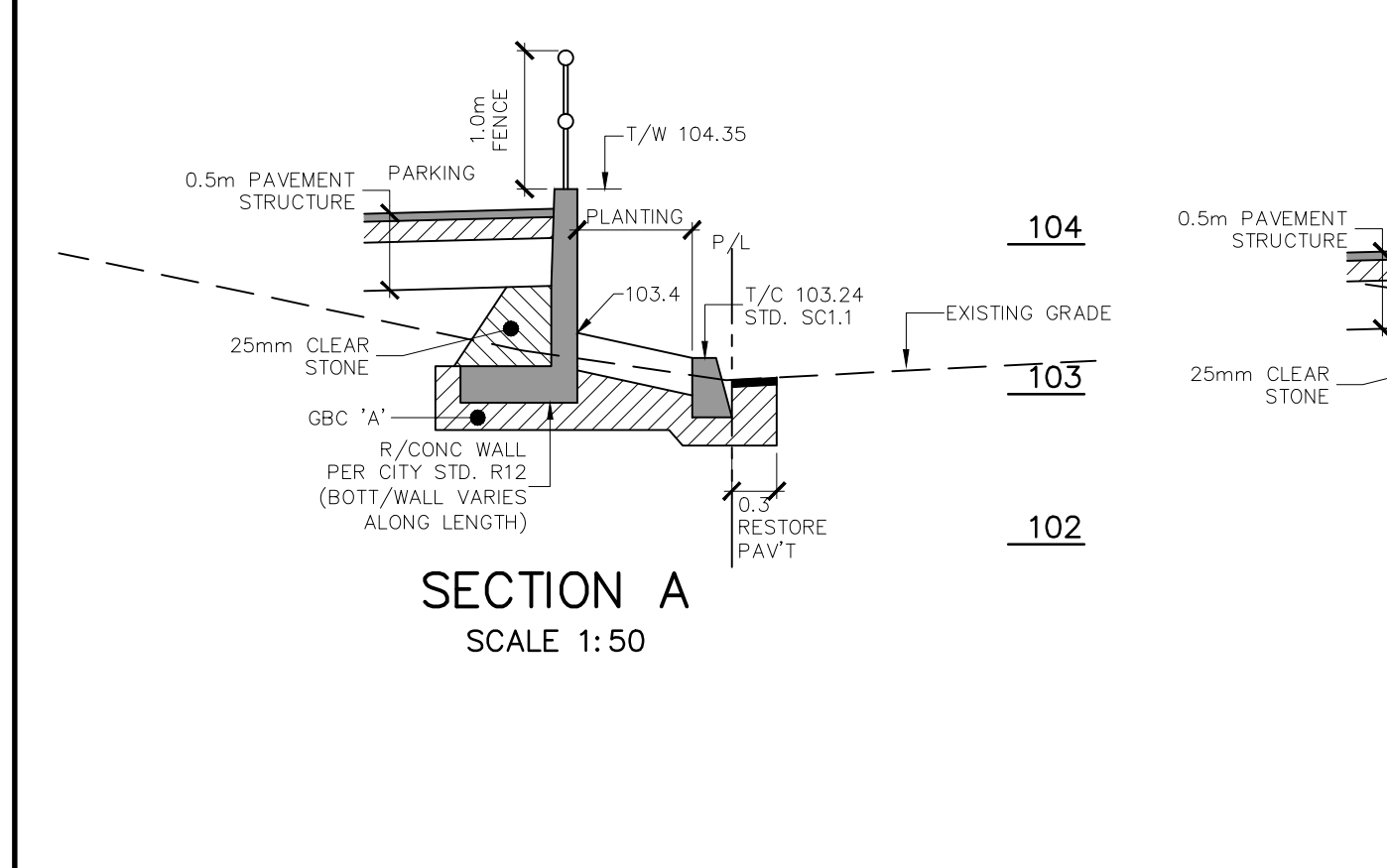
SECTION X - X  
H 1:200 V 1:50



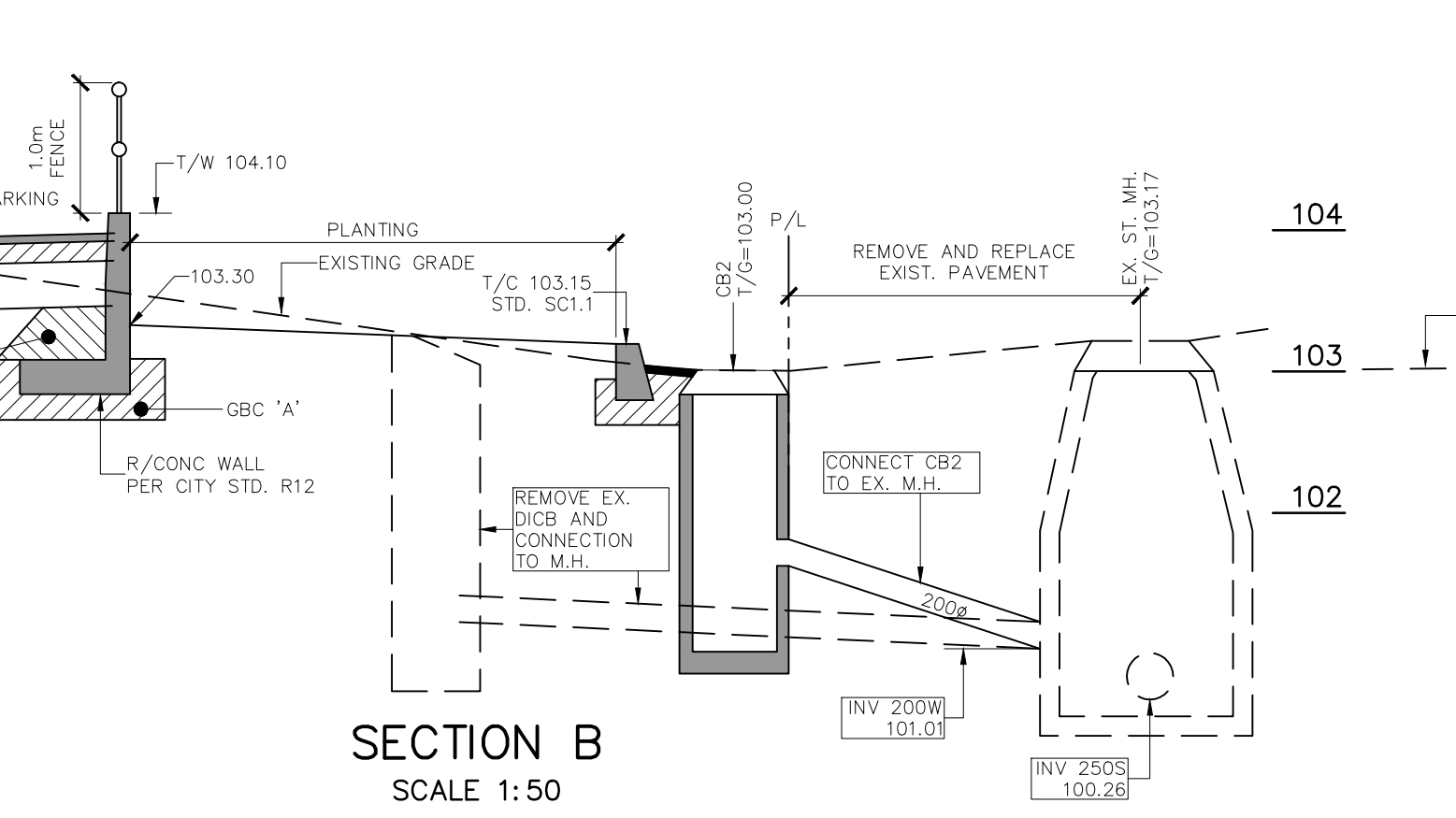
SANITARY AND WATER SERVICE CONNECTION PROFILE  
H 1:200 V 1:50



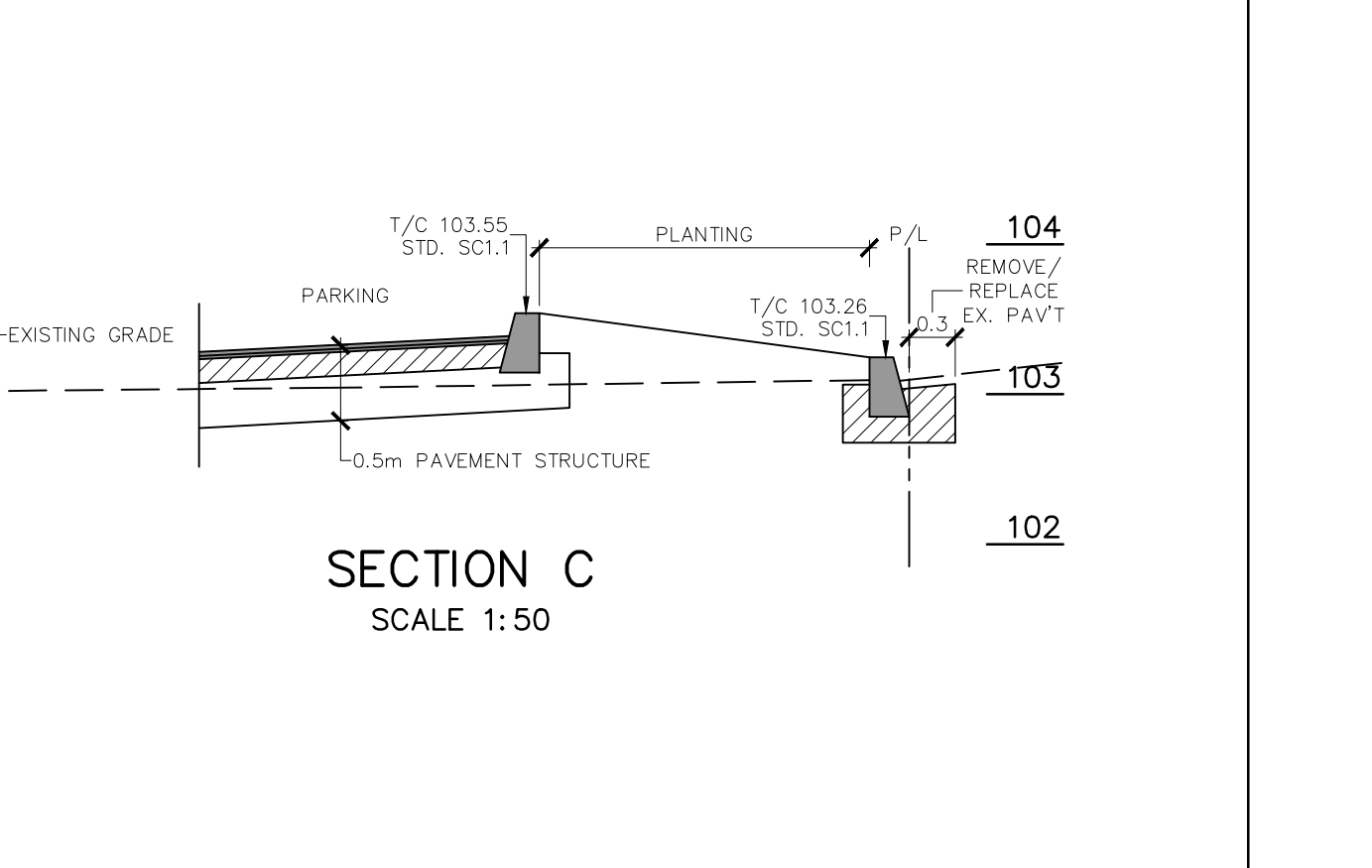
STORM SEWER SERVICE CONNECTION PROFILE  
H 1:200 V 1:50



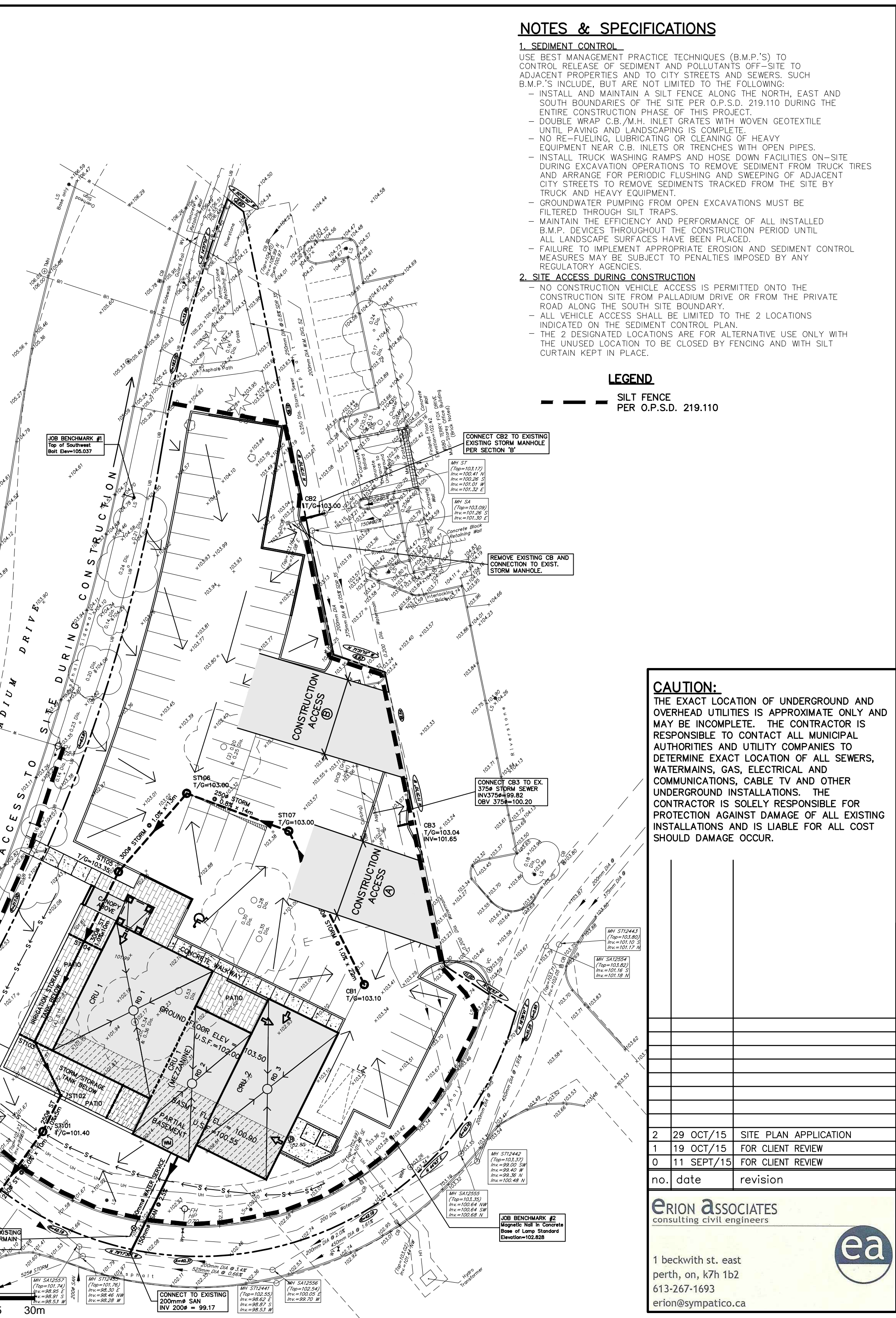
SECTION A  
SCALE 1:50



SECTION B  
SCALE 1:50



SECTION C  
SCALE 1:50



**NOTES & SPECIFICATIONS**

**1. SEDIMENT CONTROL**

- USE BEST MANAGEMENT PRACTICE TECHNIQUES (B.M.P.'S) TO CONTROL RELEASE OF SEDIMENT AND POLLUTANTS OFF-SITE TO ADJACENT PROPERTIES AND TO CITY STREETS AND SEWERS. SUCH B.M.P.'S INCLUDE, BUT ARE NOT LIMITED TO THE FOLLOWING:
  - INSTALL AND MAINTAIN A SILT FENCE ALONG THE NORTH, EAST AND SOUTH BOUNDARIES OF THE SITE PER O.P.S.D. 219.110 DURING THE ENTIRE CONSTRUCTION PHASE OF THIS PROJECT.
  - DOUBLE WRAP C.B./M.H. INLET GRATES WITH WOVEN GEOTEXTILE UNTIL PAVING AND LANDSCAPING IS COMPLETE.
  - NO RE-FUELING, LUBRICATING OR CLEANING OF HEAVY EQUIPMENT NEAR C.B. INLETS OR TRENCHES WITH OPEN PIPES.
  - INSTALL TRUCK WASHING RAMPS AND HOSE-DOWN FACILITIES ON-SITE DURING EXCAVATION OPERATIONS TO REMOVE SEDIMENT FROM TRUCK TIRES AND ARRANGE FOR PERIODIC FLUSHING AND SWEEPING OF ADJACENT CITY STREETS TO REMOVE SEDIMENTS TRACKED FROM THE SITE BY TRUCK AND HEAVY EQUIPMENT.
  - GROUNDWATER PUMPING FROM OPEN EXCAVATIONS MUST BE FILTERED THROUGH SILT TRAPS.
  - MAINTAIN THE EFFICIENCY AND PERFORMANCE OF ALL INSTALLED B.M.P. DEVICES THROUGHOUT THE CONSTRUCTION PERIOD UNTIL ALL LANDSCAPE SURFACES HAVE BEEN PLACED.
  - FAILURE TO IMPLEMENT APPROPRIATE EROSION AND SEDIMENT CONTROL MEASURES MAY BE SUBJECT TO PENALTIES IMPOSED BY ANY REGULATORY AGENCIES.

**2. SITE ACCESS DURING CONSTRUCTION**

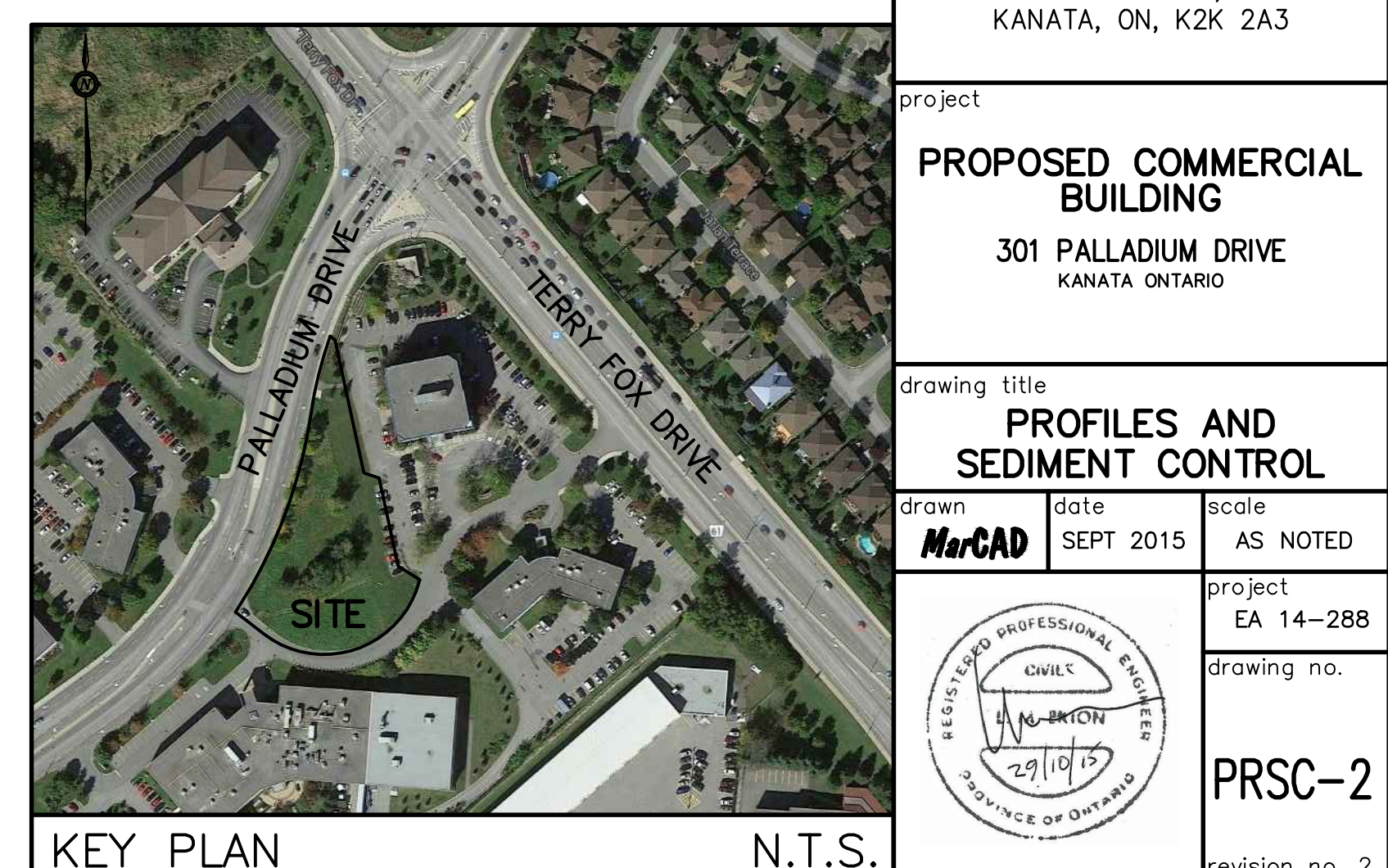
- NO CONSTRUCTION VEHICLE ACCESS IS PERMITTED ONTO THE CONSTRUCTION SITE FROM PALLADIUM DRIVE OR FROM THE PRIVATE ROAD ALONG THE SOUTH SITE BOUNDARY.
- ALL VEHICLE ACCESS SHALL BE LIMITED TO THE 2 LOCATIONS INDICATED ON THE SEDIMENT CONTROL PLAN.
- THE 2 DESIGNATED LOCATIONS ARE FOR ALTERNATE USE ONLY WITH THE UNUSED LOCATION TO BE CLOSED BY FENCING AND WITH SILT CURTAIN KEPT IN PLACE.

**LEGEND**

- SILT FENCE PER O.P.S.D. 219.110

**CAUTION:**  
THE EXACT LOCATION OF UNDERGROUND AND OVERHEAD UTILITIES IS APPROXIMATE ONLY AND MAY BE INCOMPLETE. THE CONTRACTOR IS RESPONSIBLE TO CONTACT ALL MUNICIPAL AUTHORITIES AND UTILITY COMPANIES TO DETERMINE EXACT LOCATION OF ALL SEWERS, WATERMANS, GAS, ELECTRICAL AND COMMUNICATIONS, CABLE TV AND OTHER UNDERGROUND INSTALLATIONS. THE CONTRACTOR IS SOLELY RESPONSIBLE FOR PROTECTION AGAINST DAMAGE OF ALL EXISTING INSTALLATIONS AND IS LIABLE FOR ALL COST SHOULD DAMAGE OCCUR.

SEDIMENT CONTROL PLAN



KEY PLAN

owner  
301 PALLADIUM LTD.  
4015 CARLING AVENUE, SUITE 201  
KANATA, ON, K2K 2A3

project  
**PROPOSED COMMERCIAL BUILDING**  
301 PALLADIUM DRIVE  
KANATA ONTARIO

drawing title  
**PROFILES AND SEDIMENT CONTROL**

drawn  
MarCAD

date  
SEPT 2015

scale  
AS NOTED

project  
EA 14-288

drawing no.  
PRSC-2

revision no. 2