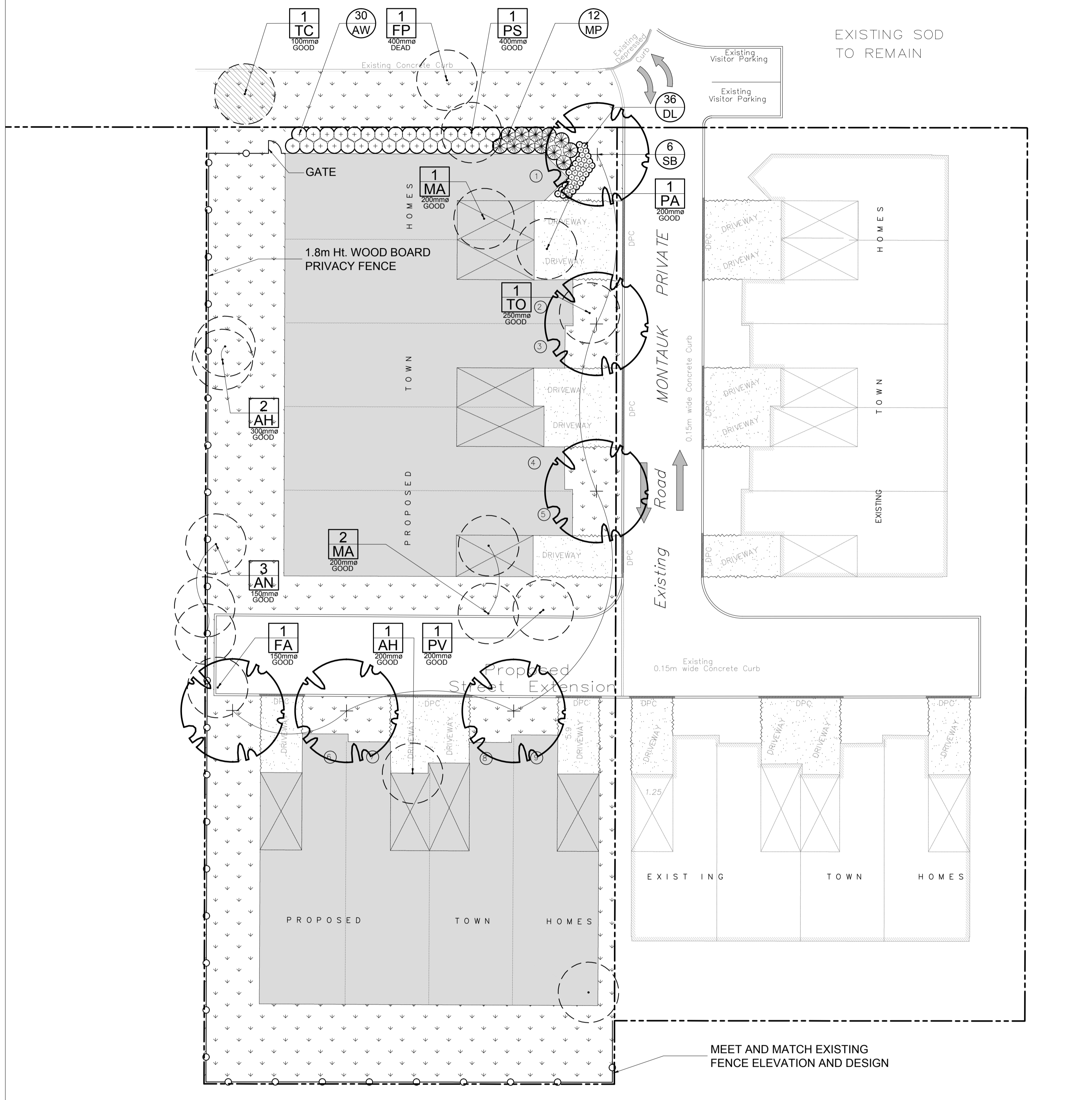
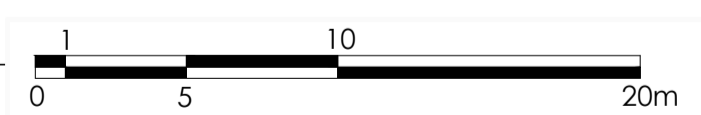


GREENBRIAR DRIVE



1 TREE CONSERVATION REPORT & LANDSCAPE PLAN  
SCALE 1:250



EXISTING TREE LIST

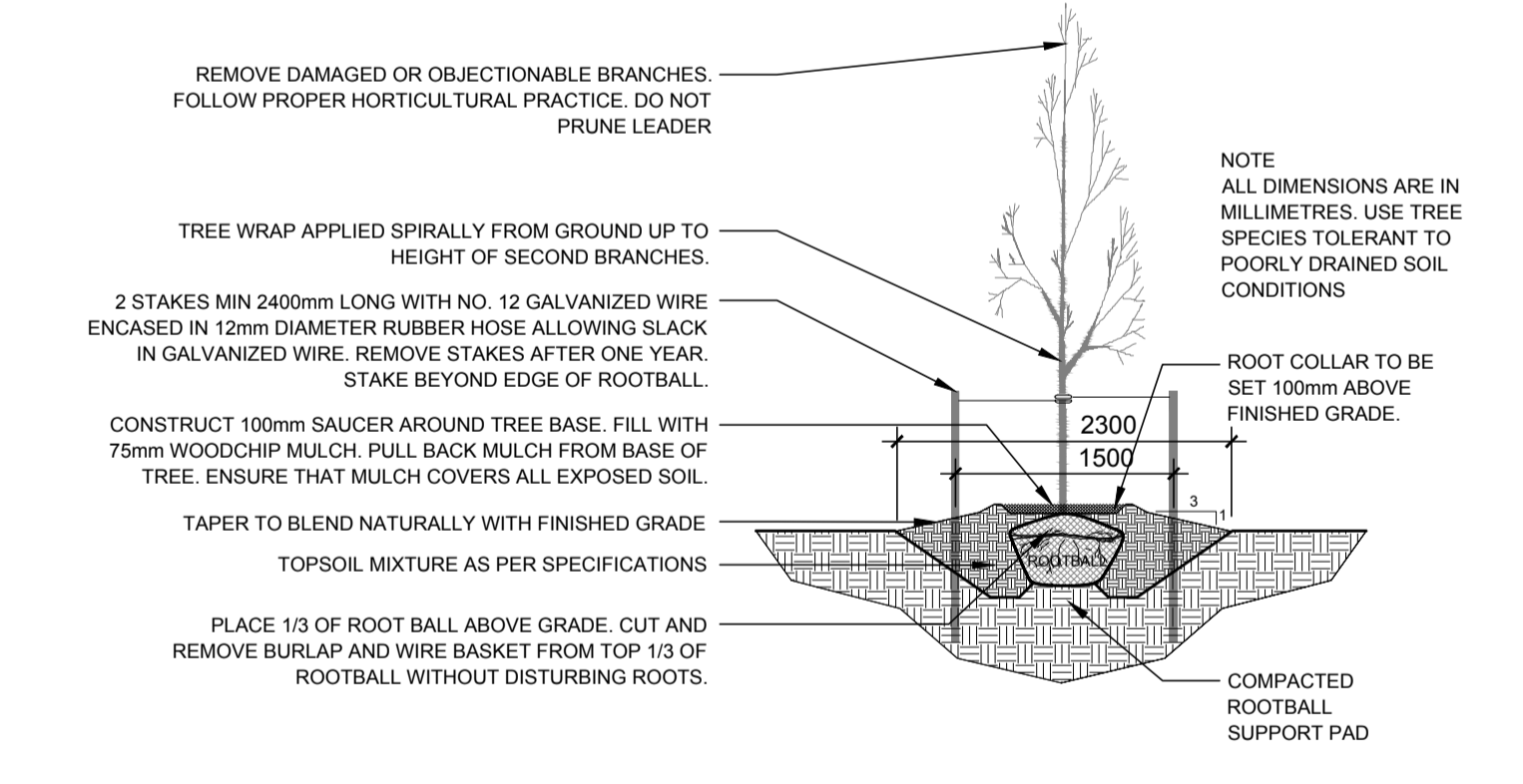
KEY	QTY.	BOTANICAL NAME	COMMON NAME	SIZE	CONDITION	REMARKS
AN	3	Acer negundo	Manitoba Maple	150mm ø	GOOD	See Plan
AH	3	Aesculus hippocastanum	Horse Chestnut	200-300mm ø	GOOD	See Plan
FA	1	Frangula alnus	Glossy Buckthorn	150mm ø	GOOD	See Plan
FP	1	Fraxinus pennsylvanica	Green Ash	400mm ø	DEAD	See Plan
MA	3	Malus sp.	Apple Tree	200mm ø	GOOD	See Plan
PA	1	Picea abies	Norway Spruce	200mm ø	GOOD	See Plan
PS	1	Pinus strobus	White Pine	400mm ø	GOOD	See Plan
PV	1	Prunus virginiana	Chokecherry	200mm ø	GOOD	See Plan
PD	1	Populus deltoides	Eastern Cottonwood	1000mm ø	GOOD	See Plan
TO	1	Thuja occidentalis	White Cedar	300mm ø	GOOD	See Plan
TC	1	Tilia cordata	Littleleaf Linden	100mm ø	GOOD	See Plan

PROPOSED PLANT LIST

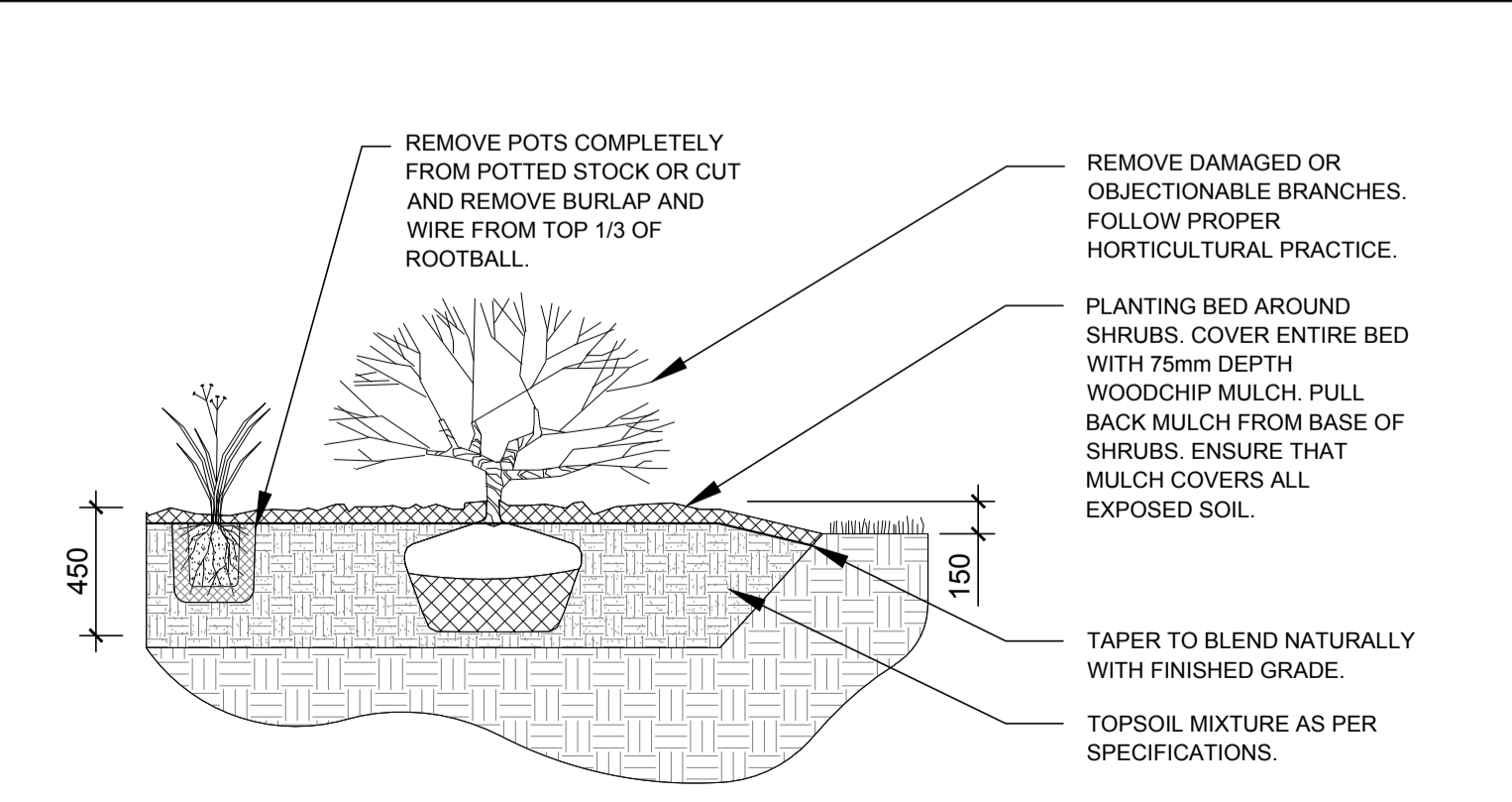
KEY	QTY.	BOTANICAL NAME	COMMON NAME	SIZE	CONDITION	REMARKS
SB	6	Amelanchier canadensis 'Glennform'	Rainbow Pillar Serviceberry	60mm ø	B&B	Single Leader
MP	12	Pinus mugo 'Pumilio'	Dwarf Mugo Pine	600mm ht.	Potted	Space 1000mm O.C.
AW	30	Spiraea x bumalda 'Anthony Watereri'	Anthony Waterer Spirea	600mm ht.	Potted	Space 1000mm O.C.
DL	36	Hemerocallis 'Stella D'Oro'	Stella D'Oro Daylily	250mm Pot.	Potted	Space 400mm O.C.

GENERAL NOTES:

- It is the responsibility of the appropriate contractor or official to report any errors, omissions or discrepancies on this plan with actual site conditions to the Landscape Architect before proceeding with construction.
- The contractor is to notify all utility companies and authorities prior to any excavation and ascertain locations of underground services.
- The contractor is to reinstaate all areas and items damaged as a result of construction activity.
- The contractor is to comply with all pertinent codes and by-laws.
- The contractor is to maintain a positive surface run-off throughout the entire construction period.
- The Landscape Architect is not responsible for subsurface conditions.
- The contractor is to identify all existing trees to remain on site with the Landscape Architect prior to construction.
- The contractor is to stake the proposed location of all plant material in conjunction with the Landscape Architect prior to excavation.
- Minimum distances for selected deciduous trees are as follows:
  - Building Foundations 7.5m
  - Sidewalks 1.5m
  - Public Streets 2.5m
  - Underground Infrastructure 2.0m
- All trees within 1m of underground utility trenches are to be excavated by hand.
- Remove all protective wrapping from tree trunks after installation.
- Staking of trees shall only be performed if necessary.
- Ensure that mulch is pulled back a min. distance of 75mm from base of tree trunk.
- Deciduous trees to be planted on private property 450mm inside of property line min.



2 DECIDUOUS TREE PLANTING  
SCALE: NTS



3 SHRUB/ PERENNIAL PLANTING  
SCALE: NTS

CLIENT: THE RGB GROUP  
277 Kitchener Avenue  
Ottawa, Ontario K2A 1Y1  
Cell: (613) 265-2700  
Fax: (613) 695-7700

LOCATION PLAN

CONSULTANTS

SURVEYORS: Farley, Smith & Denis Surveying Ltd.  
190 Colonnade Road South Unit #10  
Ottawa, Ontario K2E 1J5  
Tel: (613) 727-8226

LEGEND

- EXISTING TREES TO REMAIN
- EXISTING TREE TO BE REMOVED (REMOVE STUMP TO A DEPTH OF 600mm BELOW FINISH GRADE)
- PROPOSED DECIDUOUS TREE
- PROPOSED SHRUBS/PERENNIALS
- PROPOSED SOD
- PROPOSED 1.8m HL WOOD BOARD PRIVACY FENCE

No.	Issue	Date	DR	JK
1	ISSUED FOR DISCUSSION AND REVIEW	09/09/2015	ML	JL

JAMES B. LENNOX & ASSOCIATES INC.  
LANDSCAPE ARCHITECTS  
3332 CARLING AVE. OTTAWA, ONTARIO K2H 5A8  
Tel: (613) 722-5168 Fax: 1(866) 343-3942

PROJECT  
890 GREENBRIAR AVENUE  
OTTAWA, ONTARIO

DRAWING  
TREE CONSERVATION REPORT &  
LANDSCAPE PLAN

STAMP

SCALE  
1:250

START DATE  
SEPTEMBER 2015

PROJECT NO.

PROJECT NORTH

DRAWING NO.  
**L.1**

PLOT SIZE A.1