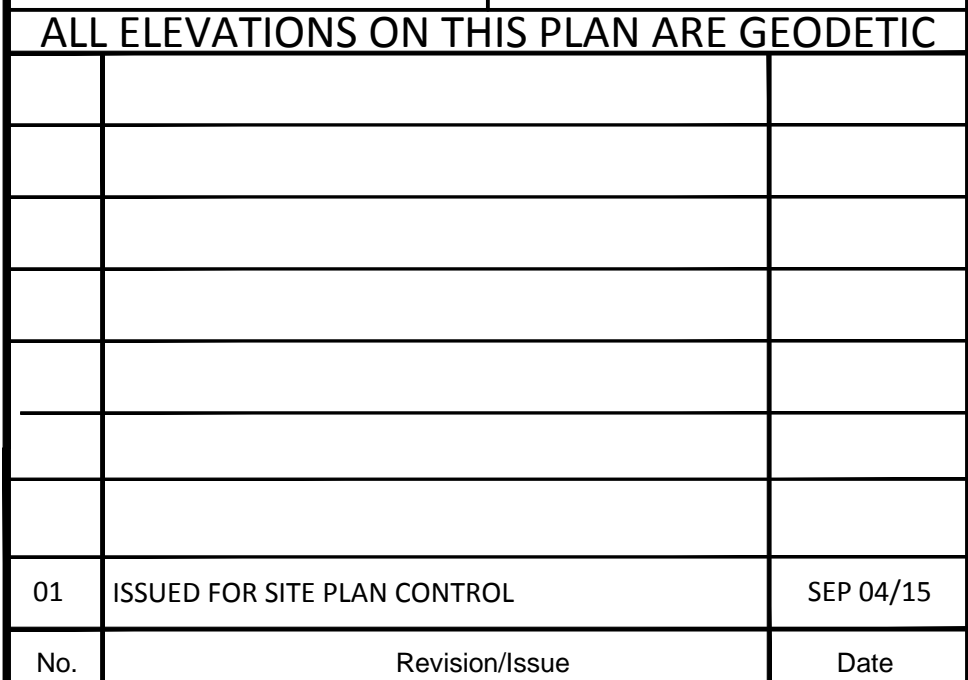


WATER SERVICE COVER TABLE				
LOCATION	STATION	FINISHED GRADE	TOP OF SERVICE	DEPTH
CONNECTION	1+00.00	87.55	85.35	2.40
10m INTERVAL	1+010.00	87.42	85.02	2.40
WW @ t	1+018.22	87.70	85.30	2.40
10m INTERVAL	1+030.00	87.68	85.28	2.40
10m INTERVAL	1+030.00	87.50	85.10	2.40
BUILDING	1+034.77	87.85	84.45	2.40

WATERMAIN NOTES

1. CONSTRUCT ALL WATERMAINS AND APPURTENANCES IN ACCORDANCE WITH OPSD STANDARDS AND SPECIFICATIONS AS WELL AS CITY STANDARDS AS INDICATED.
2. INDUSTRIAL/COMMERCIAL SERVICE CONNECTIONS TO BE 50mm COPPER PIPING AND SHALL CONFORM TO ASTM B88 TYPE K SOFT.
3. WATERMAINS AND/OR WATER SERVICES ARE TO HAVE A MINIMUM COVER OF 2.4m. OTHERWISE THERMAL INSULATION IS REQUIRED AS PER CITY DWG. No. W22.
4. IF THE WATERMAIN MUST BE DEFLECTED TO MEET ALIGNMENT, ENSURE THAT THE AMOUNT OF DEFLECTION USED IS EQUAL TO OR LESS THAN THAT WHICH IS RECOMMENDED BY THE MANUFACTURER.
5. USE APPROVED SADDLE CONNECTION WITH MAIN (CORPORATION) STOP AS PER STD DWG W26.
6. CONNECTION TO EXISTING BY CITY, EXCAVATION, BACKFILLING AND REINSTATEMENT BY CONTRACTOR.
7. THERMAL INSULATION OF WATERMAINS AT OPEN STRUCTURES AS PER STD DWG W22.
8. THERMAL INSULATION OF WATERMAINS UNDER ROAD SIDE DITCHES AS PER STD DWG W21



Scale:	1:200	Project Number:	CP-14-0214
Drawn by:	JMJ		
Checked By:	CJM/KRA	Drawing Number:	C103
Designed By:	JMJ		
Date:	AUGUST 03, 2015	SHEET	3 of 3