

Revision			
No	Description	Appr.	Date
1	Issued for coordination	S.G.	07/01/2015
2	Issued for coordination	S.G.	07/07/2015
3	Issued for coordination	S.G.	07/09/2015
4	Issued for coordination	S.G.	07/13/2015
5	Issued for site plan control	S.G.	07/16/2015
6	Issued for site plan control	S.G.	08/19/2015
7	Issued for site plan control	S.G.	08/26/2015

- Note :**
- It is the responsibility of the appropriate contractor or official to report any errors, omissions or discrepancies on this plan with actual site conditions to the Landscape Architect before proceeding with construction.
 - The Contractor must not cut down any existing vegetation without the approval of the Project Director.
 - Implantation of the works on site must be approved by the Project Director.
 - The Contractor must use the Cad file for implantation of all work.The contractor must verify the amounts specified in the schedule and notify the landscape architect of any errors, omissions or contradictions before the close of the bid.
 - Existing grades indicated on the plan come from the survey provided by the owner.
 - The contractor is to notify all utility companies and authorities prior to any excavation and ascertain locations of underground services.
 - The contractor is to reinstate all areas and items damaged as a result of construction activity.
 - The contractor is to comply with all pertinent codes and by-laws.
 - The contractor is to maintain a positive surface run-off throughout the entire construction period.
 - The Landscape Architect is not responsible for subsurface conditions.
 - The contractor is to stake the proposed location of all plant material in conjunction with the Landscape Architect prior to excavation.
 - All trees within 1m of underground utility trenches are to be excavated by hand.
 - Remove all protective wrapping from tree trunks after installation.
 - Staking of trees shall only be performed if necessary.
 - Ensure that mulch is pulled back a min. distance of 75mm from base of tree trunk.

PROJET | PAYSAGE

24 Mont-Royal W Suite 801 Montreal Quebec H2T 2S2
T: 514.849.7700 F: 514.849.2027 info@projetpaysage.com



Project name

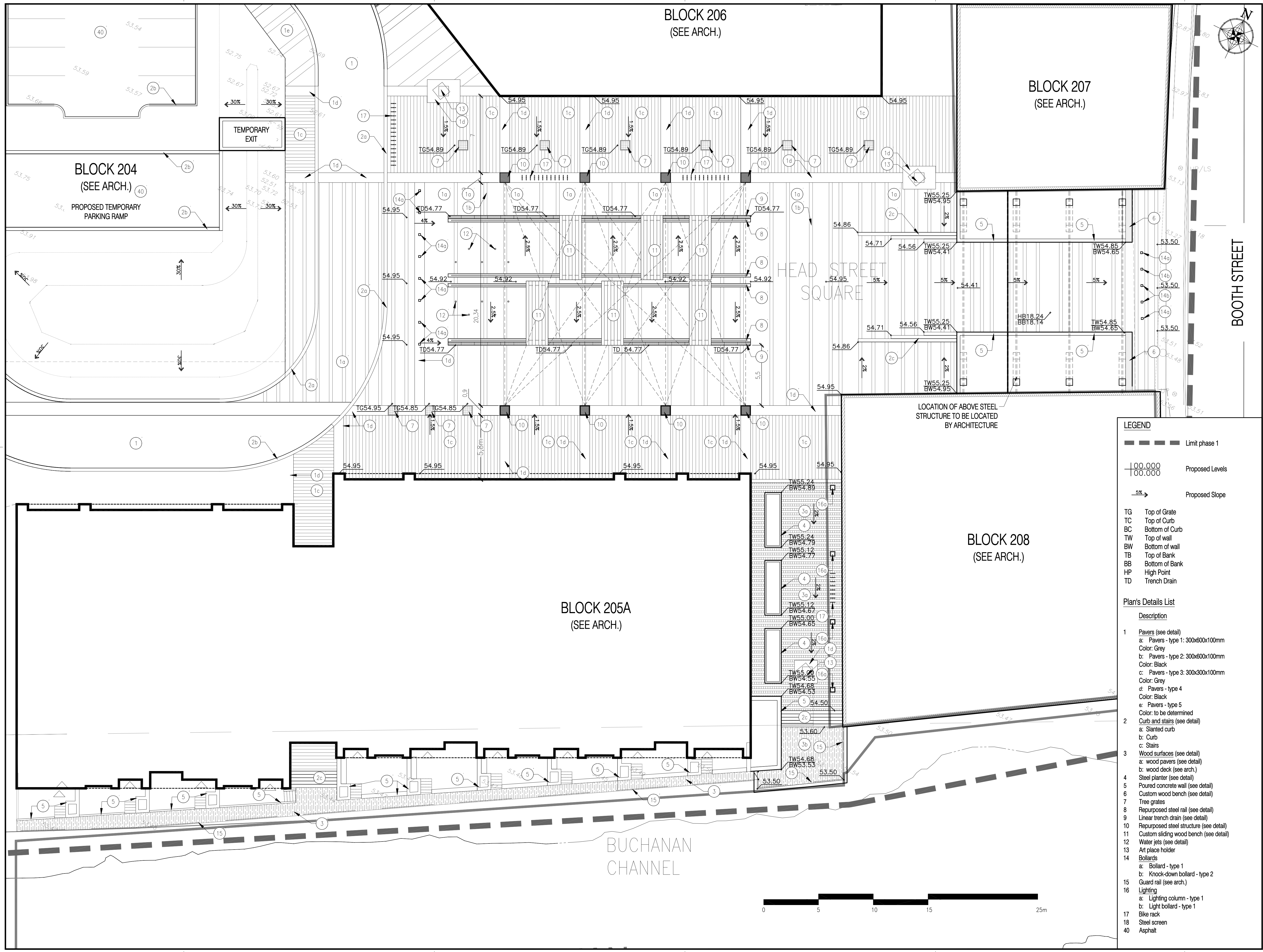
ZIBI
One Planet Community
Ottawa, Ontario



Drawing title

SITE PLAN
PHASE 1

SCALE 1:250

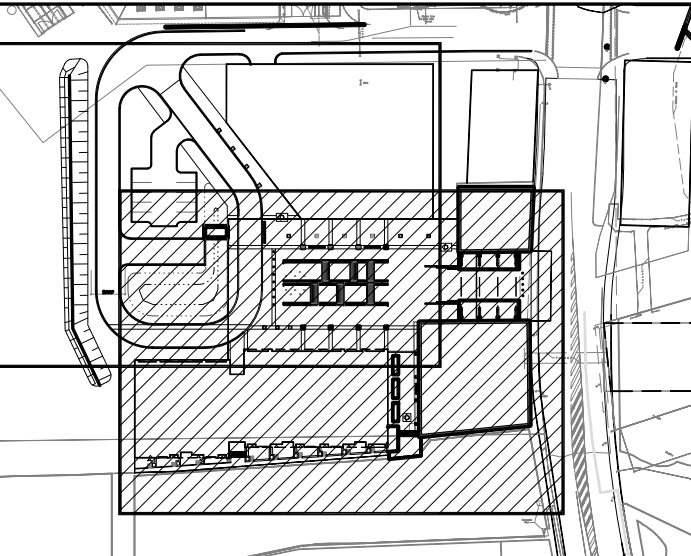
Drawn by: S.L./X.B/D.L	Sheet No. LA-01
Designed by : G.Cabanas	
Date : May 2015	
15-346	





Revision			
No	Description	Appr.	Date
1	Issued for coordination	S.G.	07/01/2015
2	Issued for coordination	S.G.	07/07/2015
3	Issued for coordination	S.G.	07/09/2015
4	Issued for coordination	S.G.	07/13/2015
5	Issued for site plan control	S.G.	07/16/2015
6	Issued for site plan control	S.G.	08/19/2015
7	Issued for site plan control	S.G.	08/26/2015

KEY PLAN




Note :

- It is the responsibility of the appropriate contractor or official to report any errors, omissions or discrepancies on this plan with actual site conditions to the Landscape Architect before proceeding with construction.
- The Contractor must not cut down any existing vegetation without the approval of the Project Director.
- Implantation of the works on site must be approved by the Project Director.
- The Contractor must use the Cad file for implantation of all work. The contractor must verify the amounts specified in the schedule and notify the landscape architect of any errors, omissions or contradictions before the close of the bid.
- Existing grades indicated on the plan come from the survey provided by the owner.
- The contractor is to notify all utility companies and authorities prior to any excavation and ascertain locations of underground services.
- The contractor is to reinstate all areas and items damaged as a result of construction activity.
- The contractor is to comply with all pertinent codes and by-laws.
- The contractor is to maintain a positive surface run-off throughout the entire construction period.
- The Landscape Architect is not responsible for subsurface conditions.
- The contractor is to stake the proposed location of all plant material in conjunction with the Landscape Architect prior to excavation.
- All trees within 1m of underground utility trenches are to be excavated by hand.
- Remove all protective wrapping from tree trunks after installation.
- Staking of trees shall only be performed if necessary.
- Ensure that mulch is pulled back a min. distance of 75mm from base of tree trunk.

PROJET | PAYSAGE

24 Mont-Royal W Suite 801 Montreal Quebec H2T 2S2
T: 514.849.7700 F: 514.849.2027 info@projetpaysage.com



Professional seal

Project name

ZABI
One Planet Community
Ottawa, Ontario

Drawing title

GRADING AND MATERIALS PLAN
HEAD STREET SQUARE

Drawn by:
S.L.X.B/D.L

Designed by:
G. Cabanas

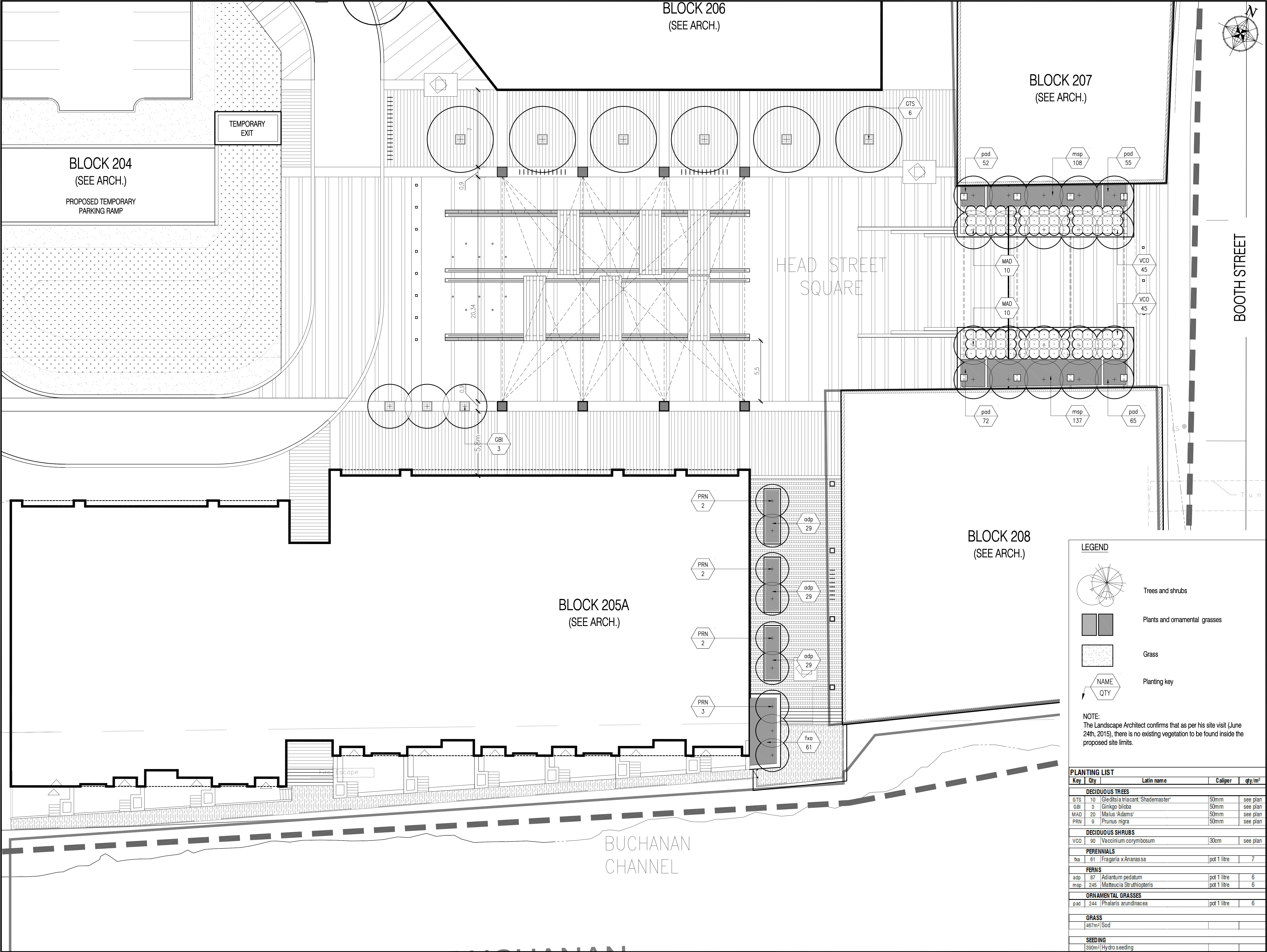
Date:
May 2015

Sheet No.

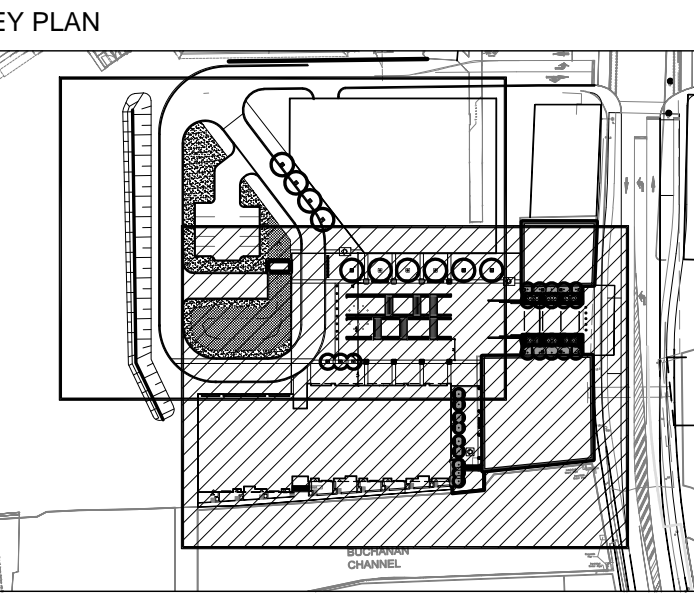
LA-02

Echelle 1:150

15-346



Revision			
No	Description	Appr.	Date
1	Issued for coordination	S.G.	07/01/2015
2	Issued for coordination	S.G.	07/07/2015
3	Issued for coordination	S.G.	07/09/2015
4	Issued for coordination	S.G.	07/13/2015
5	Issued for site plan control	S.G.	07/16/2015
6	Issued for site plan control	S.G.	08/19/2015
7	Issued for site plan control	S.G.	08/26/2015



- Note :**
- It is the responsibility of the appropriate contractor or official to report any errors, omissions or discrepancies on this plan with actual site conditions to the Landscape Architect before proceeding with construction.
 - The Contractor must not cut down any existing vegetation without the approval of the Project Director.
 - Implantation of the works on site must be approved by the Project Director.
 - The Contractor must use the Cad file for implantation of all work. The contractor must verify the amounts specified in the schedule and notify the landscape architect of any errors, omissions or contradictions before the close of the bid.
 - Existing grades indicated on the plan come from the survey provided by the owner.
 - The contractor is to notify all utility companies and authorities prior to any excavation and ascertain locations of underground services.
 - The contractor is to reinstate all areas and items damaged as a result of construction activity.
 - The contractor is to comply with all pertinent codes and by-laws.
 - The contractor is to maintain a positive surface run-off throughout the entire construction period.
 - The Landscape Architect is not responsible for subsurface conditions.
 - The contractor is to stake the proposed location of all plant material in conjunction with the Landscape Architect prior to excavation.
 - All trees within 1m of underground utility trenches are to be excavated by hand.
 - Remove all protective wrapping from tree trunks after installation.
 - Staking of trees shall only be performed if necessary.
 - Ensure that mulch is pulled back a min. distance of 75mm from base of tree trunk.

PROJET | PAYSAGE

24 Mont-Royal W Suite 801 Montreal Quebec H2T 2S2
T: 514.849.7700 F: 514.849.2027 info@projetpaysage.com



Project name

ZIBI
One Planet Community
Ottawa, Ontario

Drawing title

PLANTING PLAN
HEAD STREET SQUARE

Drawn by:
S.L.X.B/D.L.

Designed by:
G. Cabanas

Date:
May 2015

15-346

Sheet No.
LA-03

LEGEND

Trees and shrubs

Plants and ornamental grasses

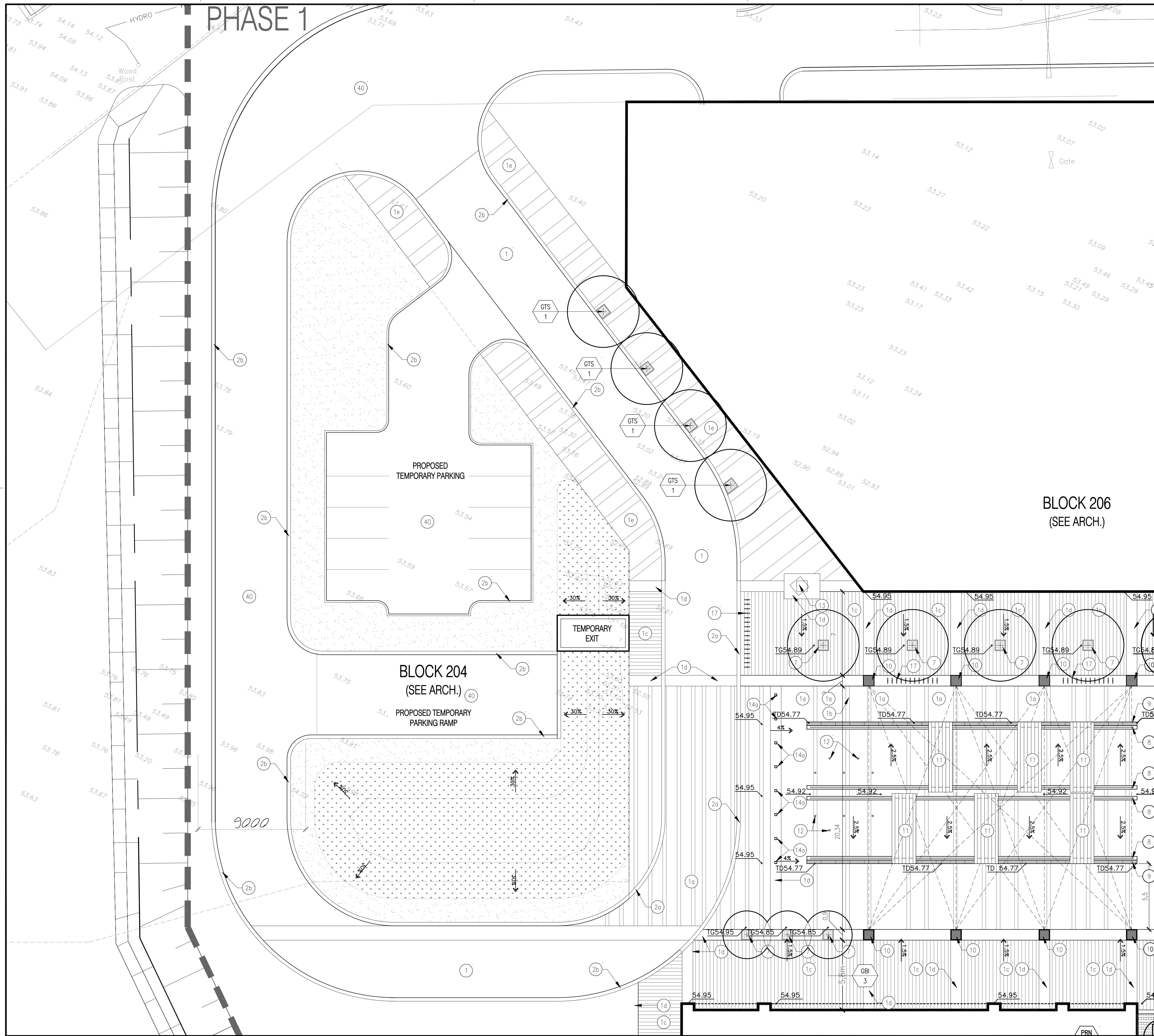
Grass

Planting key

NAME
QTY

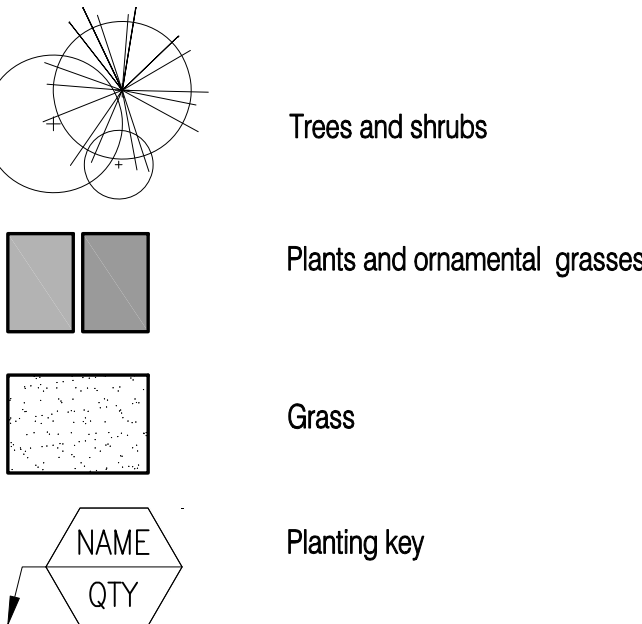
NOTE:
The Landscape Architect confirms that as per his site visit (June 24th, 2015), there is no existing vegetation to be found inside the proposed site limits.

PLANTING LIST				
Key	Qty	Latin name	Caliper	qty/m ²
DECIDUOUS TREES				
GTS 10	10	Gleditsia triacanth 'Shademaster'	50mm	see plan
GBI 3	3	Ginkgo biloba	50mm	see plan
MAD 20	20	Malus 'Adams'	50mm	see plan
PRN 9	9	Prunus nigra	50mm	see plan
DECIDUOUS SHRUBS				
VCO 90	90	Vaccinium corymbosum	30cm	see plan
PERENNIALS				
fxa 61	61	Fragaria x Ananassa	pot 1 litre	7
FERNS				
adp 87	87	Adiantum pedatum	pot 1 litre	6
msp 245	245	Matteucia Struthiopteris	pot 1 litre	6
ORNAMENTAL GRASSES				
pad 244	244	Phalaris arundinacea	pot 1 litre	6
GRASS				
467m ² Sod				
SEEDING				
1390m ² Hydro seeding				



LEGEND

- Limit phase 1
- Proposed Levels
- Proposed Slope
- TG Top of Grate
TC Top of Curb
BC Bottom of Curb
TW Top of wall
BW Bottom of wall
TB Top of Bank
BB Bottom of Bank
HP High Point
TD Trench Drain



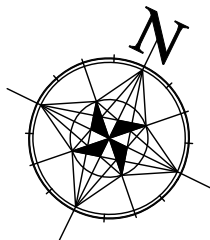
NOTE:
The Landscape Architect confirms that as per his site visit (June 24th, 2015), there is no existing vegetation to be found inside the proposed site limits.

Plan's Details List

- Description
- Pavers (see detail)
a: Pavers - type 1: 300x600x100mm
Color: Grey
b: Pavers - type 2: 300x600x100mm
Color: Black
c: Pavers - type 3: 300x300x100mm
Color: Grey
d: Pavers - type 4
Color: Black
e: Pavers - type 5
Color: to be determined
 - Curb and stairs (see detail)
a: Slanted curb
b: Curb
c: Stairs
 - Wood surfaces (see detail)
a: wood pavers (see detail)
b: wood deck (see arch.)
Steel planter (see detail)
 - Poured concrete wall (see detail)
 - Custom wood bench (see detail)
 - Tree grates
 - Repurposed steel rail (see detail)
 - Linear trench drain (see detail)
 - Repurposed steel structure (see detail)
 - Custom sliding wood bench (see detail)
 - Water jets (see detail)
 - Art place holder
 - Bollards
a: Bollard - type 1
b: Knock-down bollard - type 2
 - Guard rail (see arch.)
 - Lighting
a: Lighting column - type 1
b: Light bollard - type 1
 - Bike rack
 - Steel screen
 - Asphalt

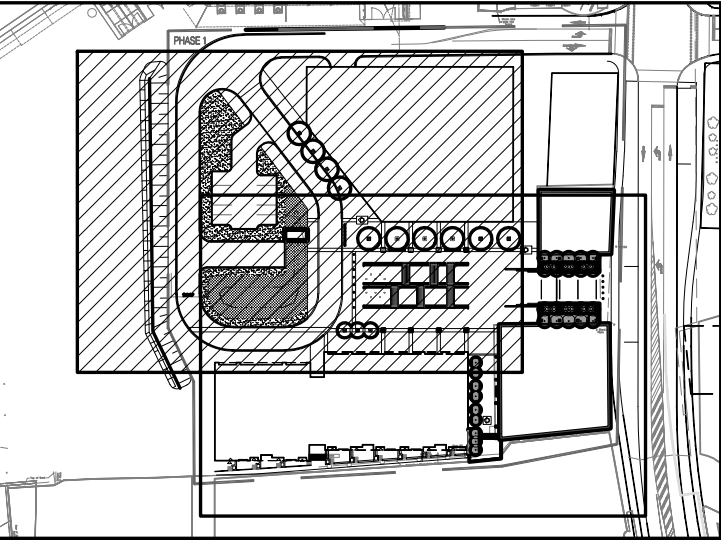
PLANTING LIST

Key	Qty	Latin name	Caliper	qty/m ²
DECIDUOUS TREES				
GTS	10	Gleditsia triacanth 'Shademaster'	50mm	see plan
CB	3	Malus bala	50mm	see plan
WAD	20	Malus 'Adams'	50mm	see plan
PRN	9	Prunus nigra	50mm	see plan
DECIDUOUS SHRUBS				
VCO	90	Vaccinium corymbosum	30cm	see plan
PERENNIALS				
fxa	61	Fragaria x Ananassa	pot 1 litre	7
FERNS				
adp	67	Adiantum pedatum	pot 1 litre	6
msp	245	Matteucia Struthiopteris	pot 1 litre	6
ORNAMENTAL GRASSES				
pad	244	Phalaris arundinacea	pot 1 litre	6
GRASS				
467m ² Sod				
SEEDING				
390m ² Hydro seeding				



Revision				
No	Description	Appr.	Date	
1	Issued for coordination	S.G.	07/01/2015	
2	Issued for coordination	S.G.	07/07/2015	
3	Issued for coordination	S.G.	07/09/2015	
4	Issued for coordination	S.G.	07/13/2015	
5	Issued for site plan control	S.G.	07/16/2015	
6	Issued for site plan control	S.G.	08/19/2015	
7	Issued for site plan control	S.G.	08/26/2015	

KEY PLAN



Note :

- It is the responsibility of the appropriate contractor or official to report any errors, omissions or discrepancies on this plan with actual site conditions to the Landscape Architect before proceeding with construction.
- The Contractor must not cut down any existing vegetation without the approval of the Project Director.
- Implantation of the works on site must be approved by the Project Director.
- The Contractor must use the Cad file for implantation of all work. The contractor must verify the amounts specified in the schedule and notify the landscape architect of any errors, omissions or contradictions before the close of the bid.
- Existing grades indicated on the plan come from the survey provided by the owner.
- The contractor is to notify all utility companies and authorities prior to any excavation and ascertain locations of underground services.
- The contractor is to reinstate all areas and items damaged as a result of construction activity.
- The contractor is to comply with all pertinent codes and by-laws.
- The contractor is to maintain a positive surface run-off throughout the entire construction period.
- The Landscape Architect is not responsible for subsurface conditions.
- The contractor is to stake the proposed location of all plant material in conjunction with the Landscape Architect prior to excavation.
- All trees within 1m of underground utility trenches are to be excavated by hand.
- Remove all protective wrapping from tree trunks after installation.
- Staking of trees shall only be performed if necessary.
- Ensure that mulch is pulled back a min. distance of 75mm from base of tree trunk.

PROJET | PAYSAGE

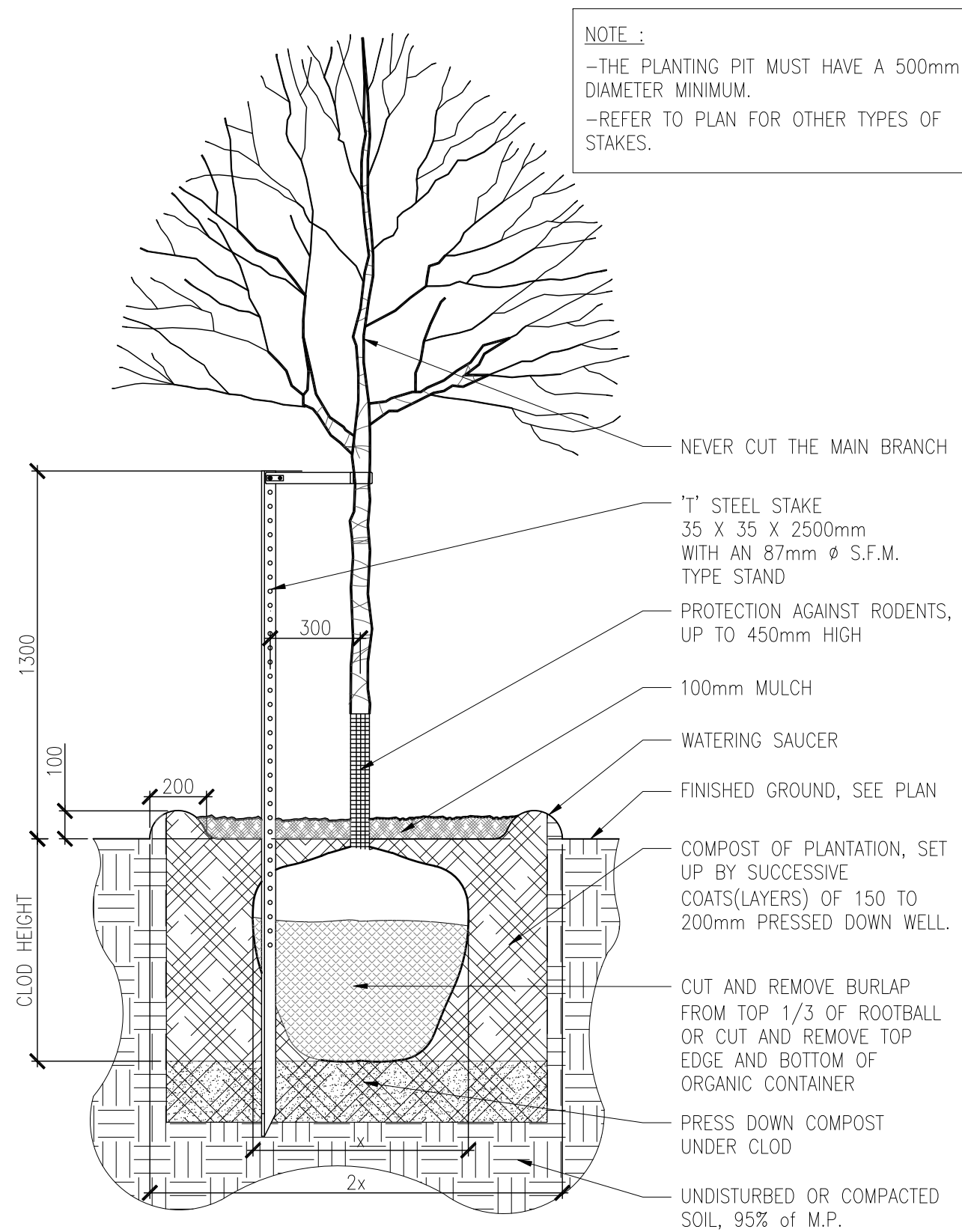
24 Mont-Royal W. Suite 801. Montreal Quebec H2T 2S2
T: 514.849.7700 F: 514.849.2027 info@projetpaysage.com



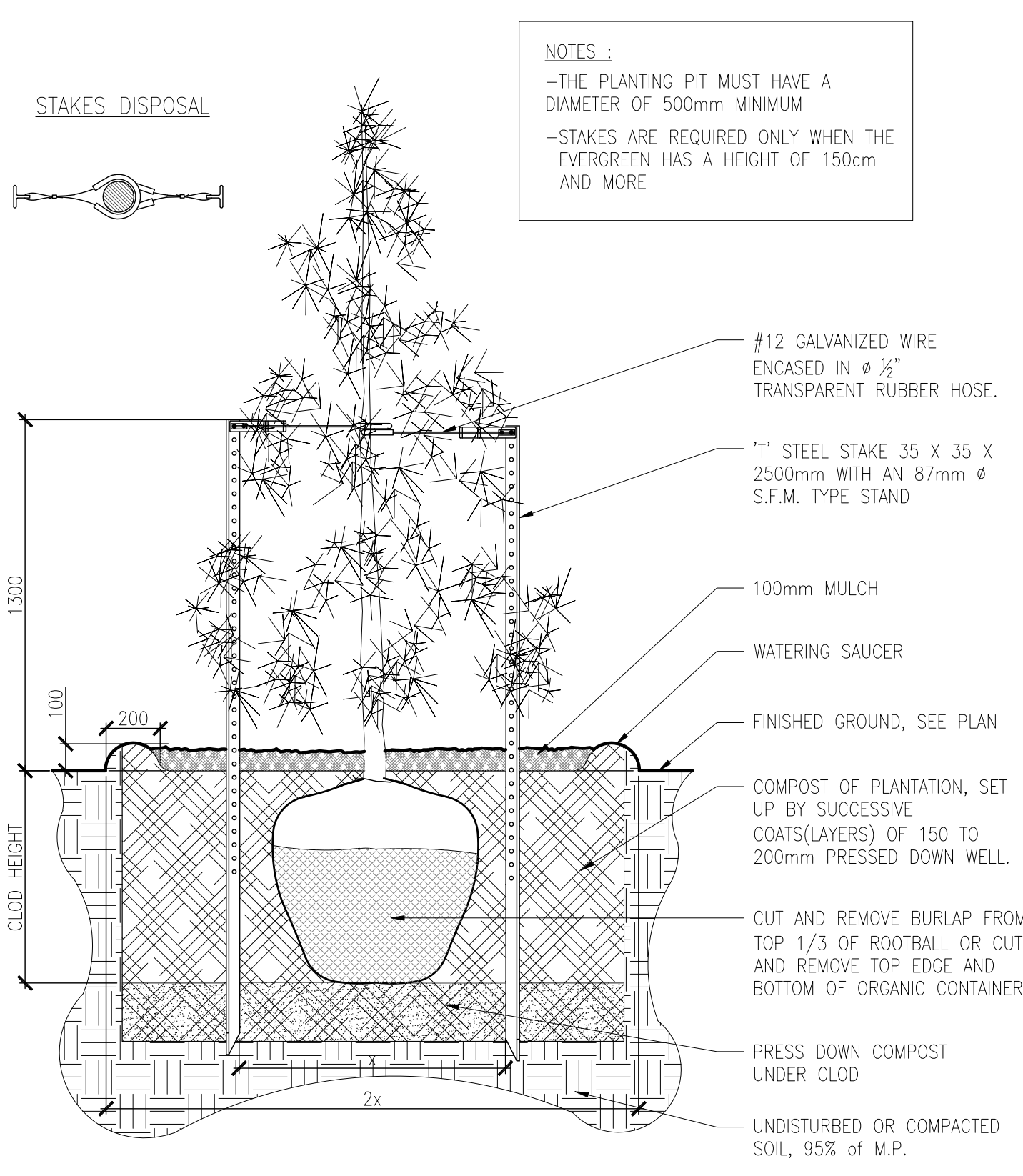
Project name
ZIBI
One Planet Community
Ottawa, Ontario

Drawing title
DESCRIPTION AND PLANTING PLAN
WOONERF AND TEMPORARY CONSTRUCTION

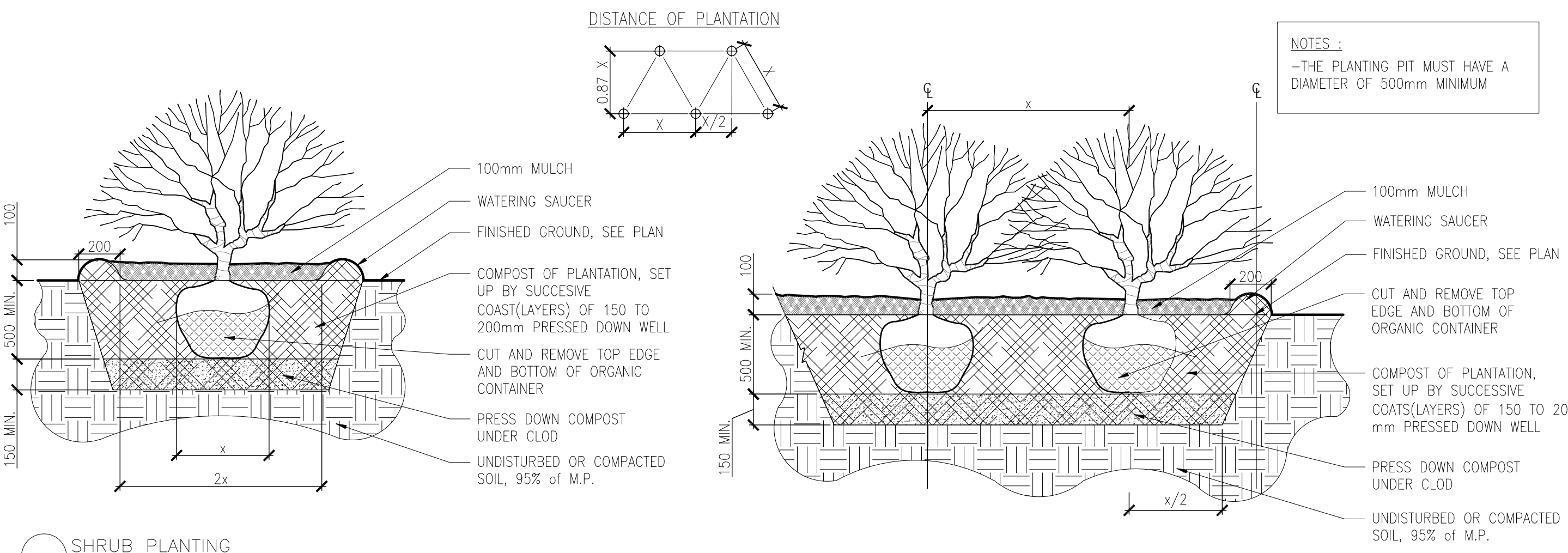
Drawn by:
S.L.X.B/D.L.
Designed by:
G. Cabanas
Date:
May 2015
Sheet No.
LA-04
15-346



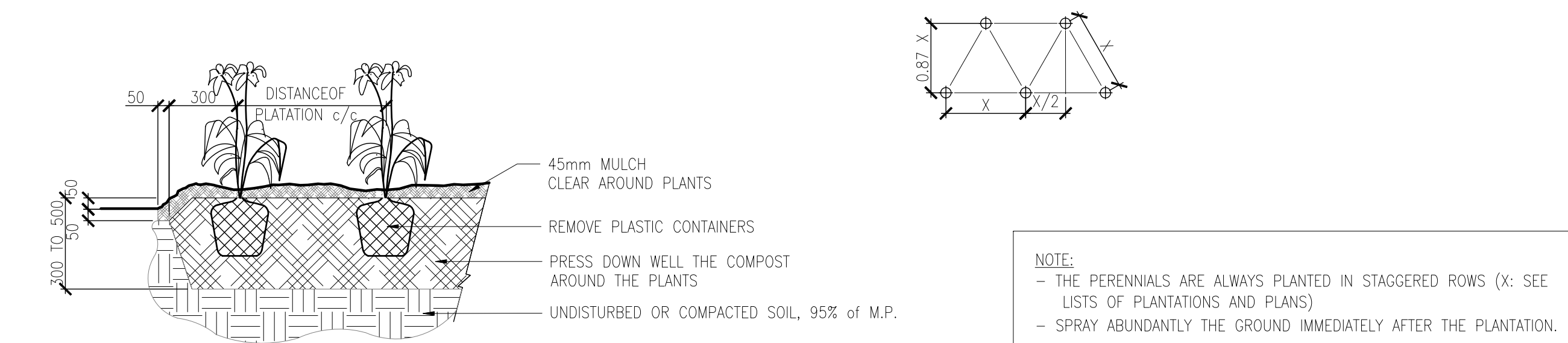
DECIDUOUS TREE PLANTING
Scale 1:20



EVERGREEN TREE PLANTING
Scale 1:20

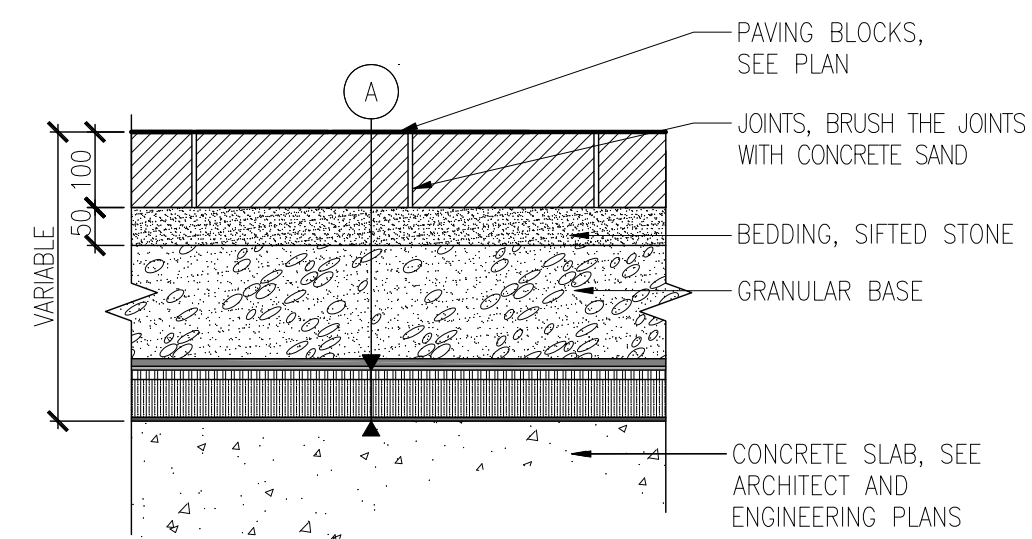


SHRUB PLANTING
Scale 1:20

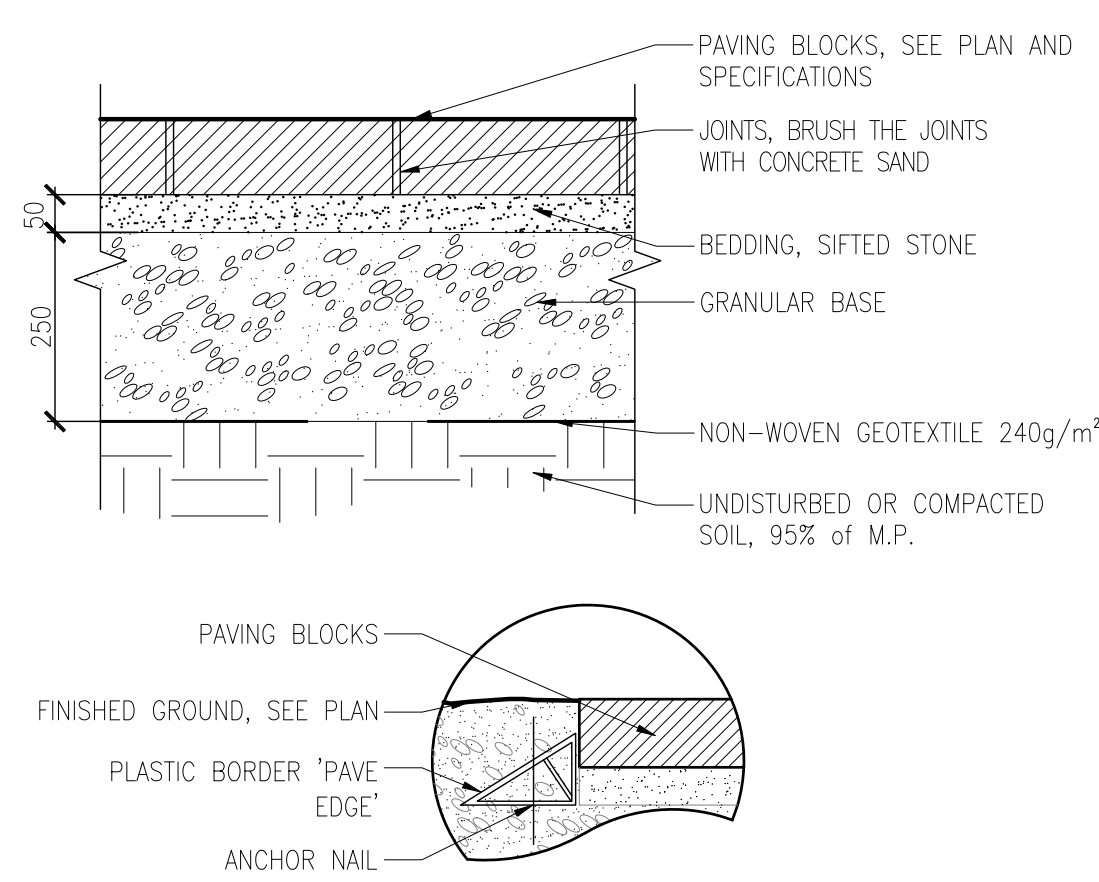


PERENNIAL PLANTATION
Scale 1:20

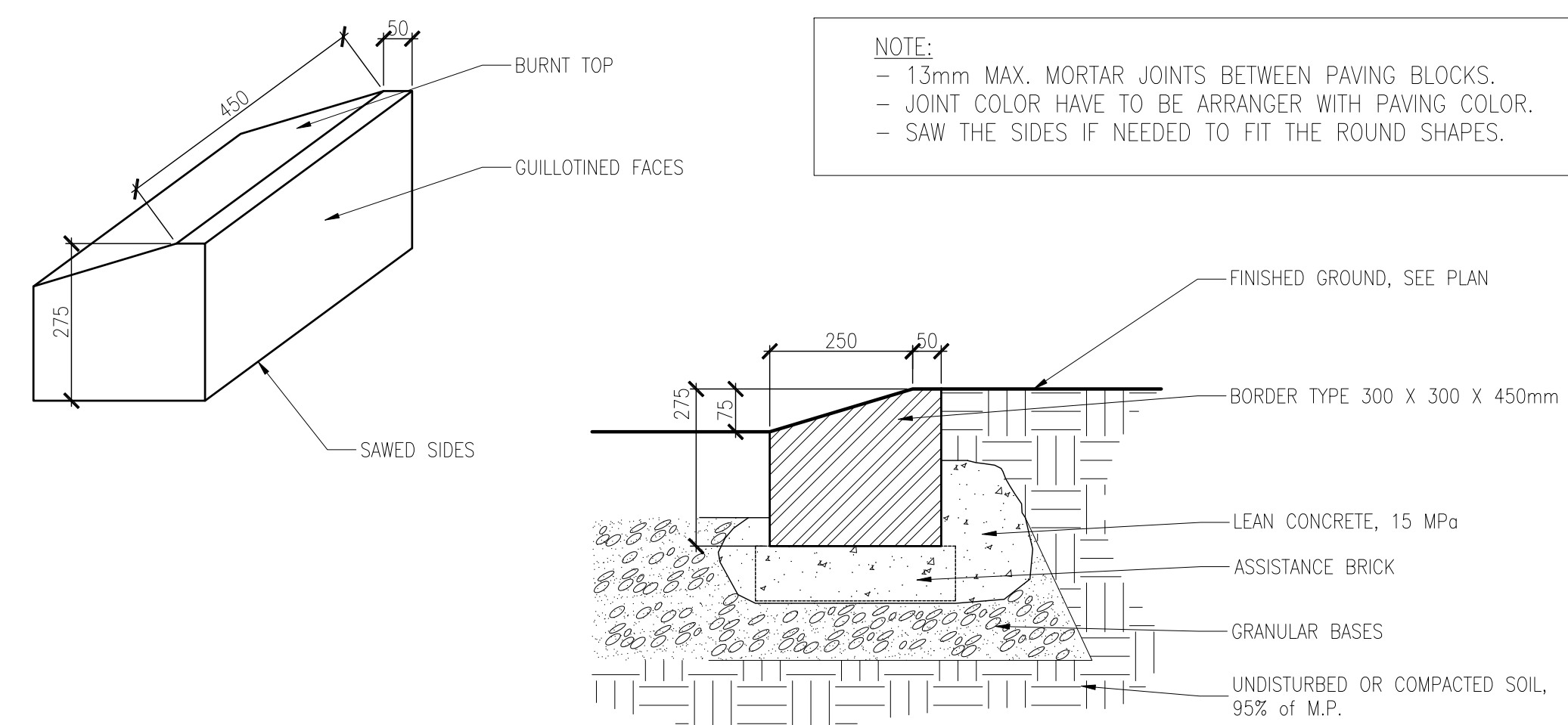
A INSULATION AND WATERPROOFING, SEE ARCHITECT'S PLAN



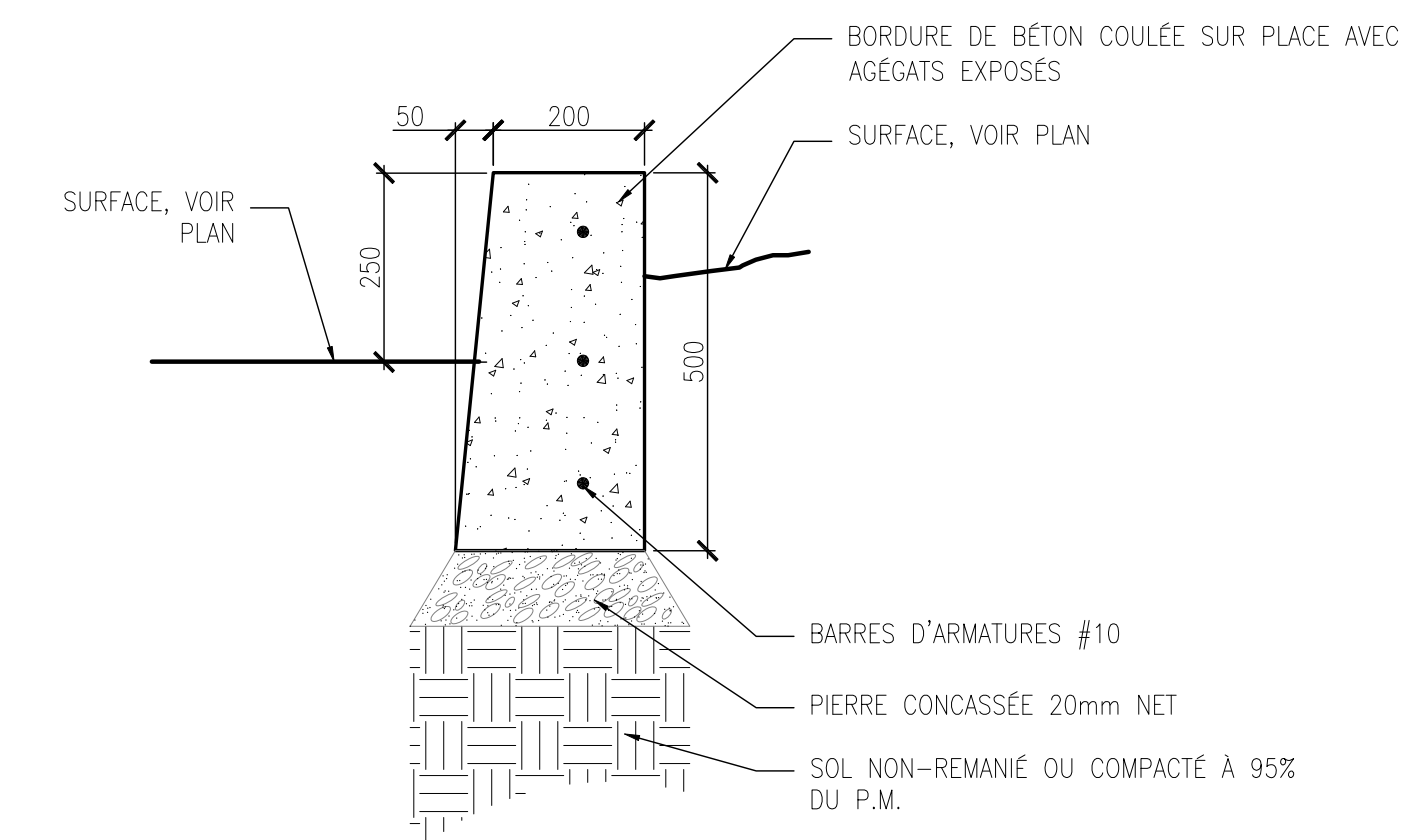
1 PAVERS ON CONCRETE SLAB
Scale 1:10



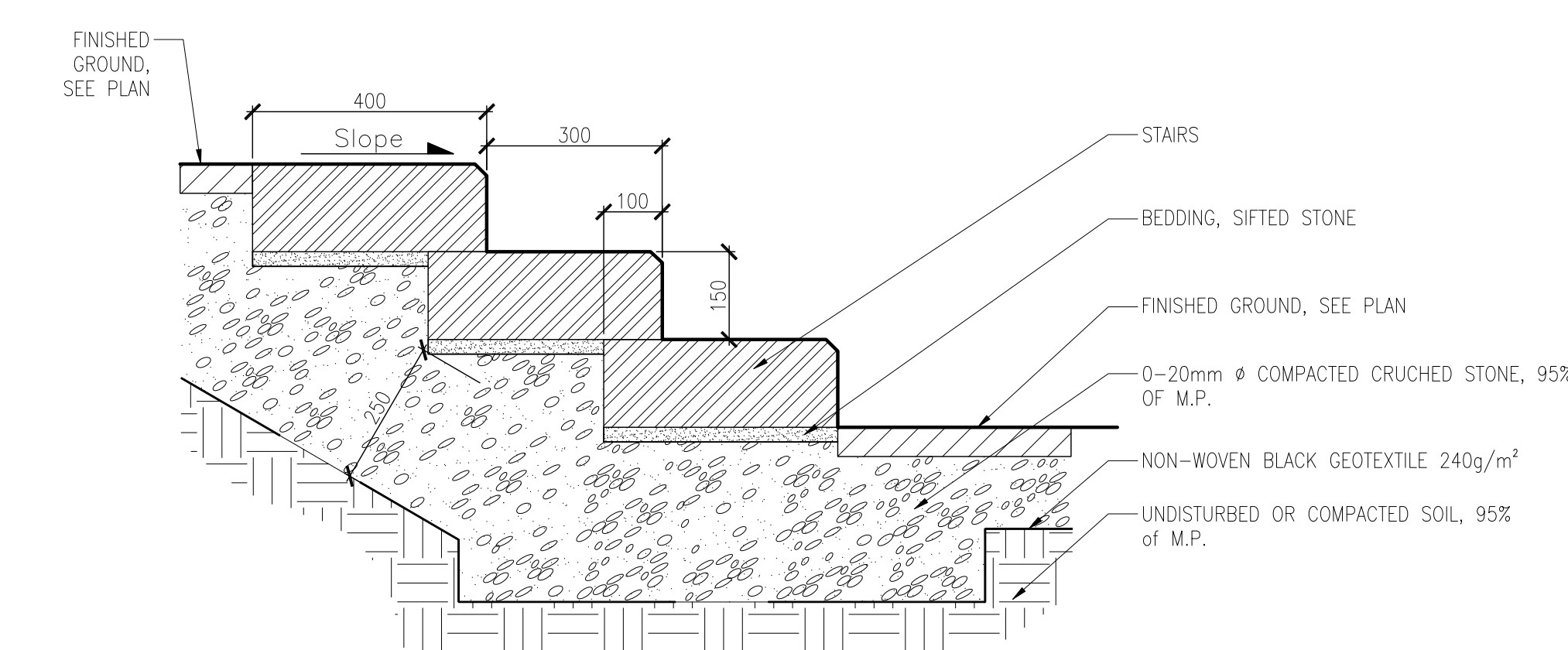
1* PAVERS ON GRANULAR BASE
Scale 1:10



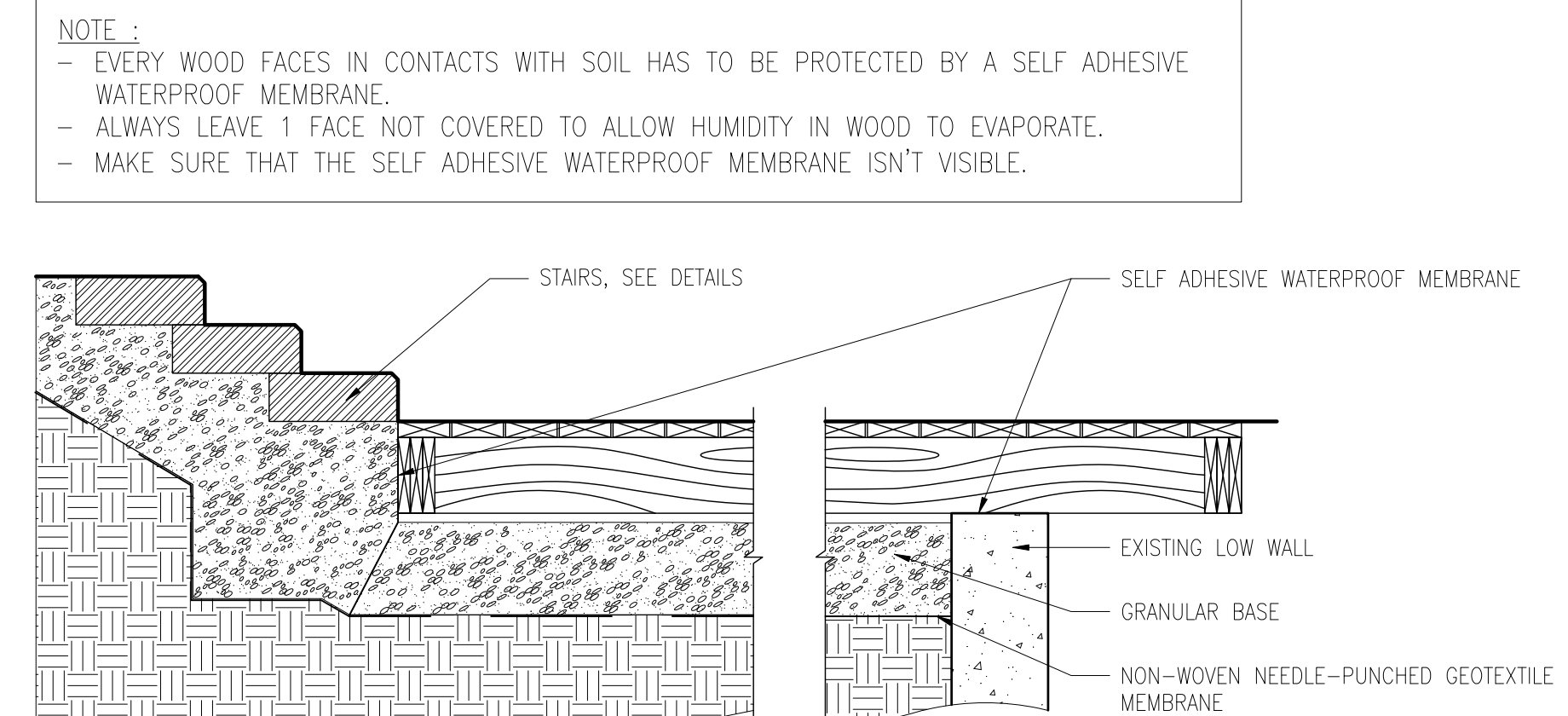
2a SLANTED CURB
Scale 1:10



2b BORDURE DE BÉTON COULÉ SUR PLACE
Echelle 1:10



2c STAIRS
Scale 1:10



3 WOOD SURFACES
Scale 1:20

Revision			
No	Description	Appr.	Date
1	Issued for coordination	S.G.	07/01/2015
2	Issued for coordination	S.G.	07/07/2015
3	Issued for coordination	S.G.	07/09/2015
4	Issued for coordination	S.G.	07/13/2015
5	Issued for site plan control	S.G.	07/16/2015
6	Issued for site plan control	S.G.	08/19/2015
7	Issued for site plan control	S.G.	08/26/2015

Note :

- It is the responsibility of the appropriate contractor or official to report any errors, omissions or discrepancies on this plan with actual site conditions to the Landscape Architect before proceeding with construction.
- The Contractor must not cut down any existing vegetation without the approval of the Project Director.
- Implantation of the works on site must be approved by the Project Director.
- The Contractor must use the Cad file for implantation of all work. The contractor must verify the amounts specified in the schedule and notify the landscape architect of any errors, omissions or contradictions before the close of the bid.
- Existing grades indicated on the plan come from the survey provided by the owner.
- The contractor is to notify all utility companies and authorities prior to any excavation and ascertain locations of underground services.
- The contractor is to reinstate all areas and items damaged as a result of construction activity.
- The contractor is to comply with all pertinent codes and by-laws.
- The contractor is to maintain a positive surface run-off throughout the entire construction period.
- The Landscape Architect is not responsible for subsurface conditions.
- The contractor is to stake the proposed location of all plant material in conjunction with the Landscape Architect prior to excavation.
- All trees within 1m of underground utility trenches are to be excavated by hand.
- Remove all protective wrapping from tree trunks after installation.
- Staking of trees shall only be performed if necessary.
- Ensure that mulch is pulled back a min. distance of 75mm from base of tree trunk.

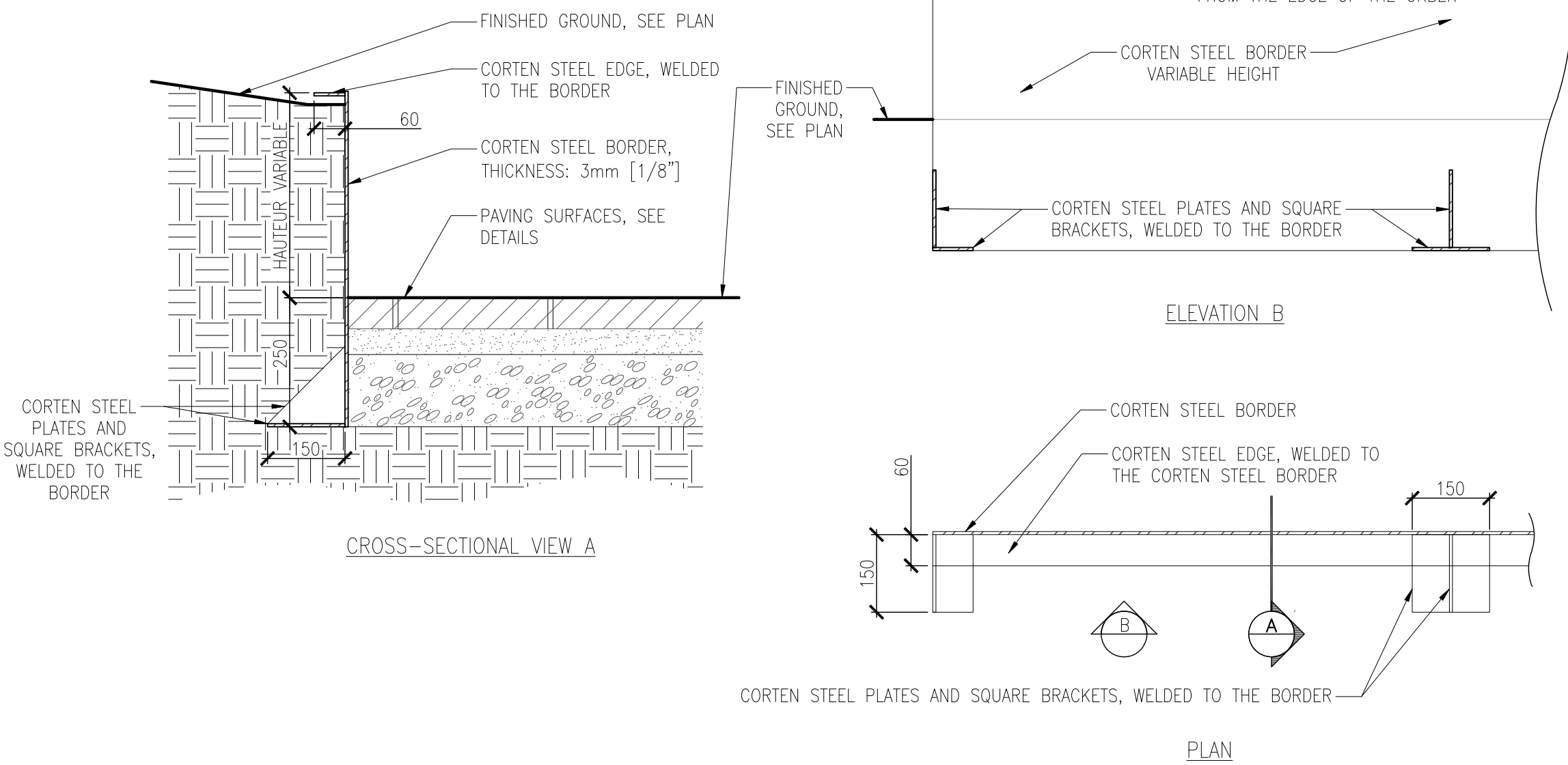
PROJET | PAYSAGE

24 Mont-Royal W Suite 801 Montreal Quebec H2T 2S2
T: 514.849.7700 F: 514.849.2027 info@projetpaysage.com

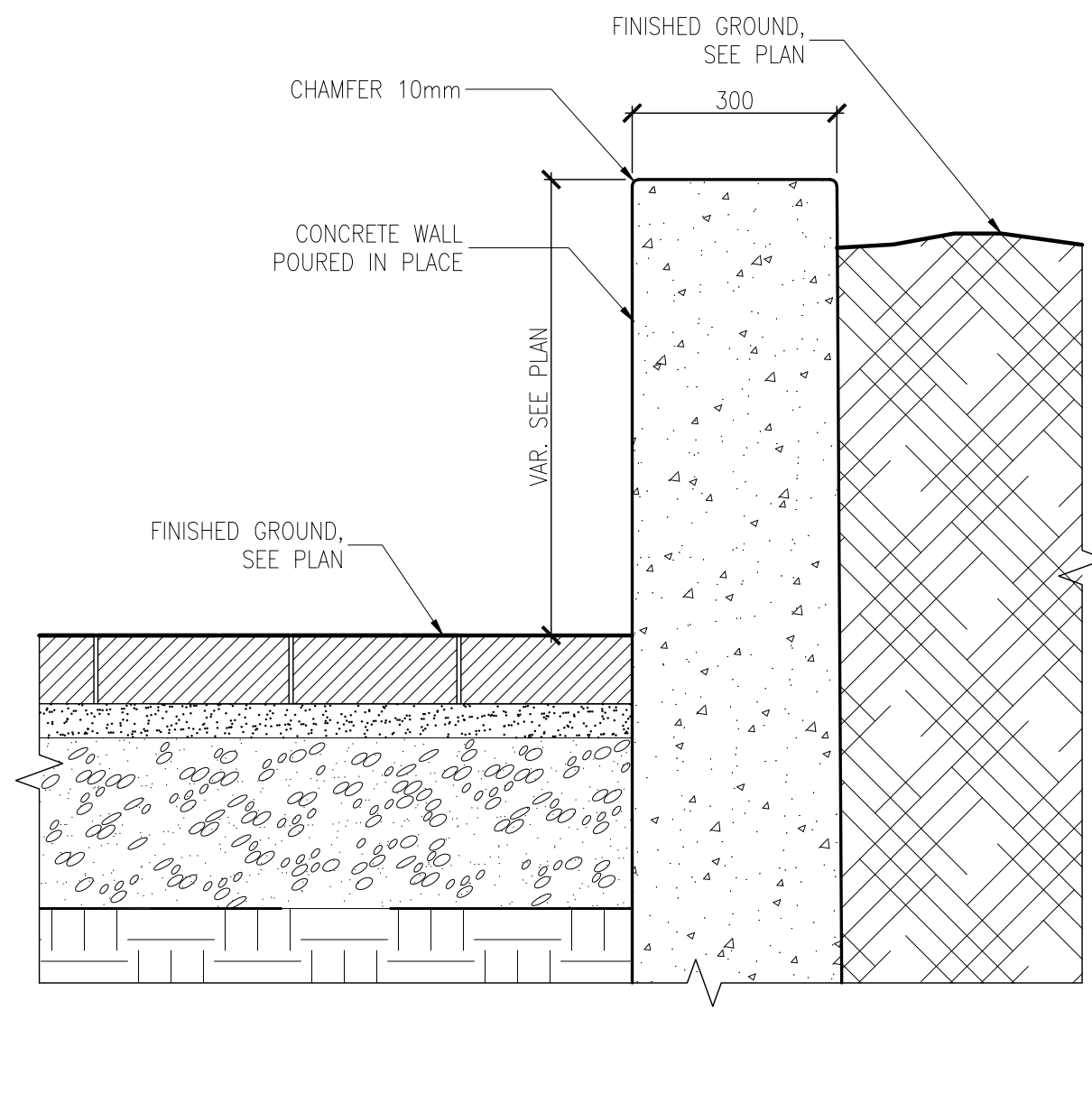
Professional seal	
Project name	
ZIBI One Planet Community Ottawa, Ontario	
Drawing title	
CONSTRUCTION DETAILS	
Scale INDICATED	
Drawn by:	Sheet No.
S.L.X.B/D.L	
Designed by:	
G.Cabanas	
Date:	
May 2015	
15-346	

LA-05

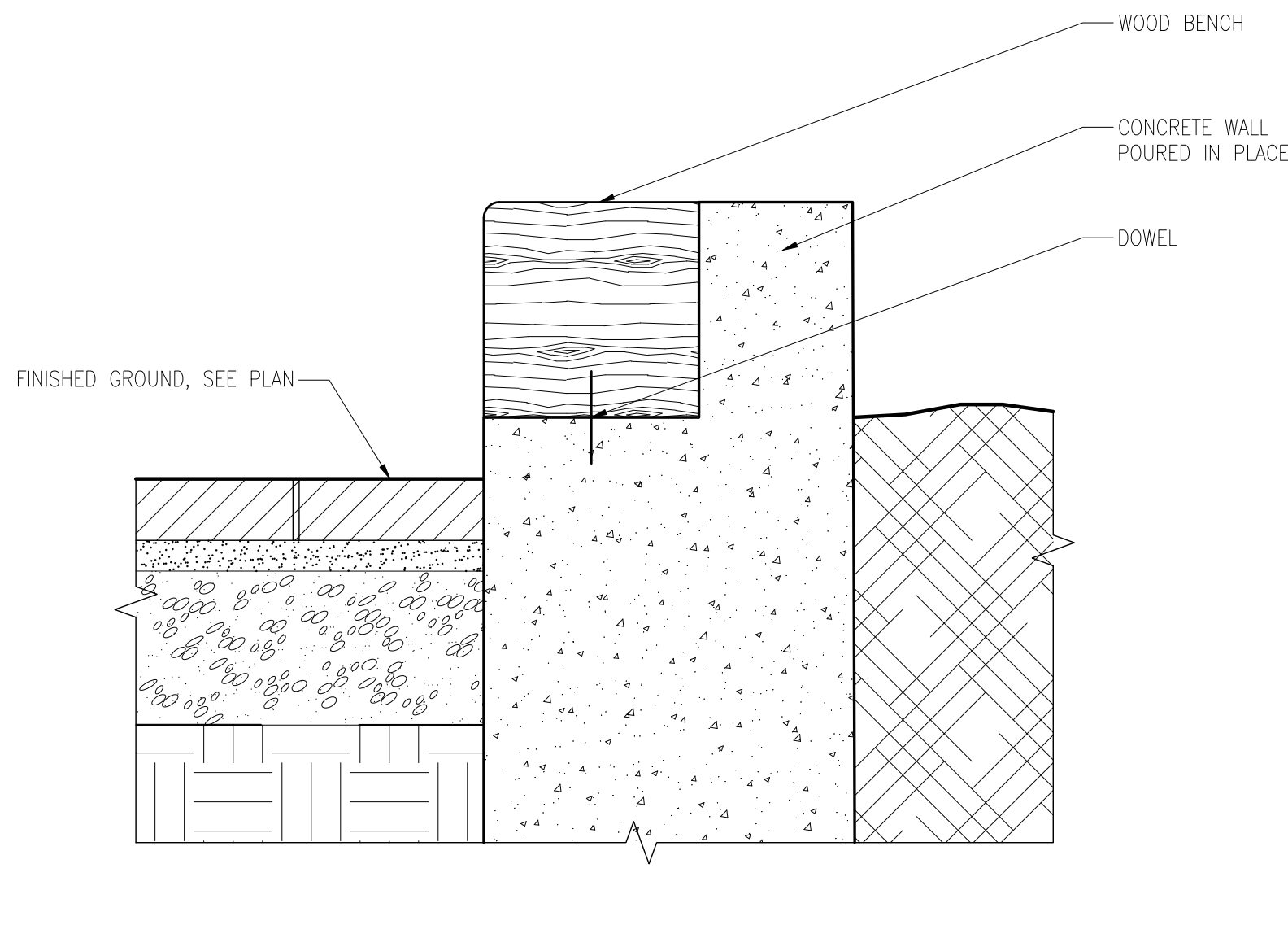
NOTE:
THE METAL CONSTRUCTION WORK HAS TO BE VALIDATED
BY LANDSCAPE ARCHITECT



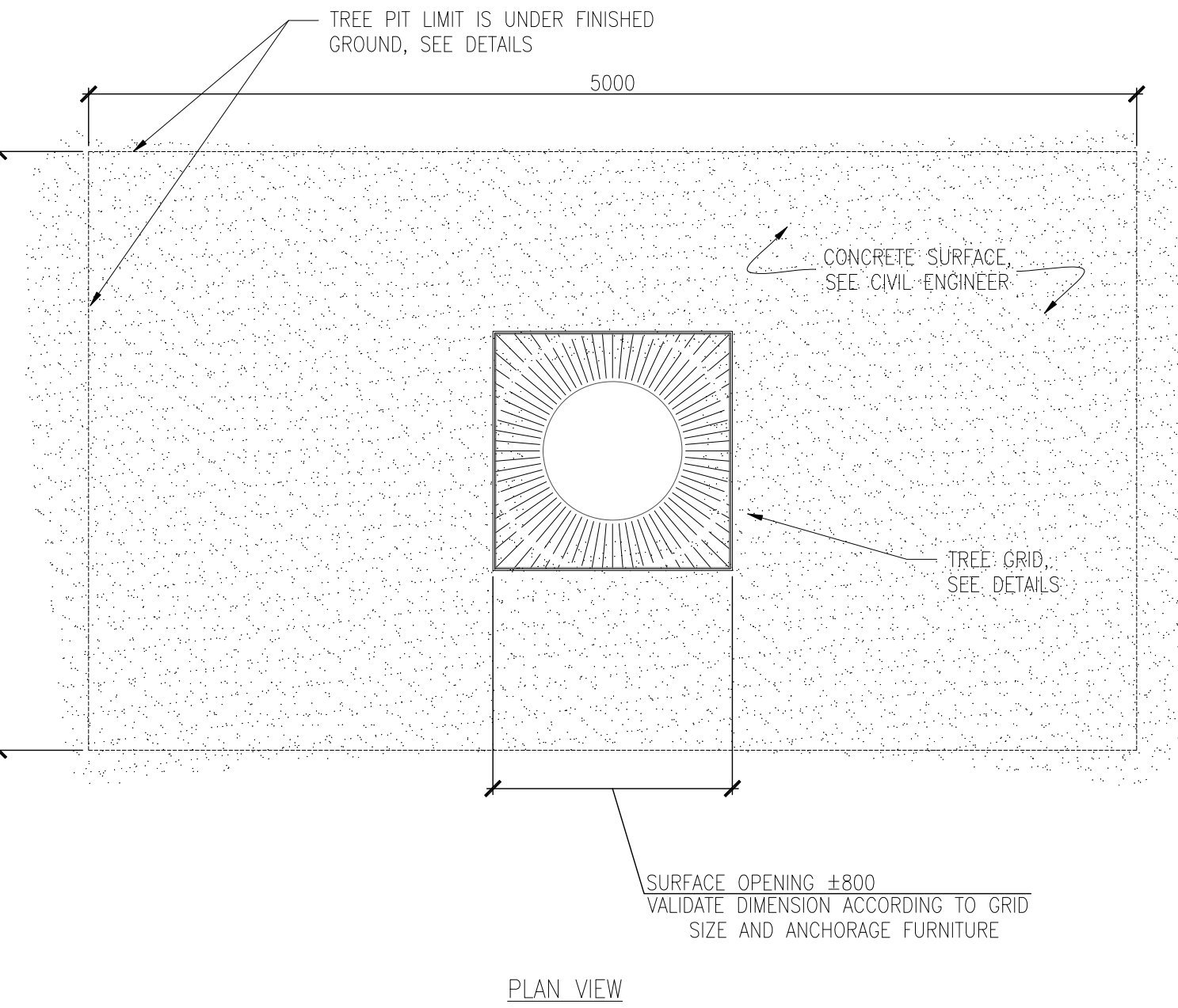
4 STEEL PLANTER
Échelle : aucune



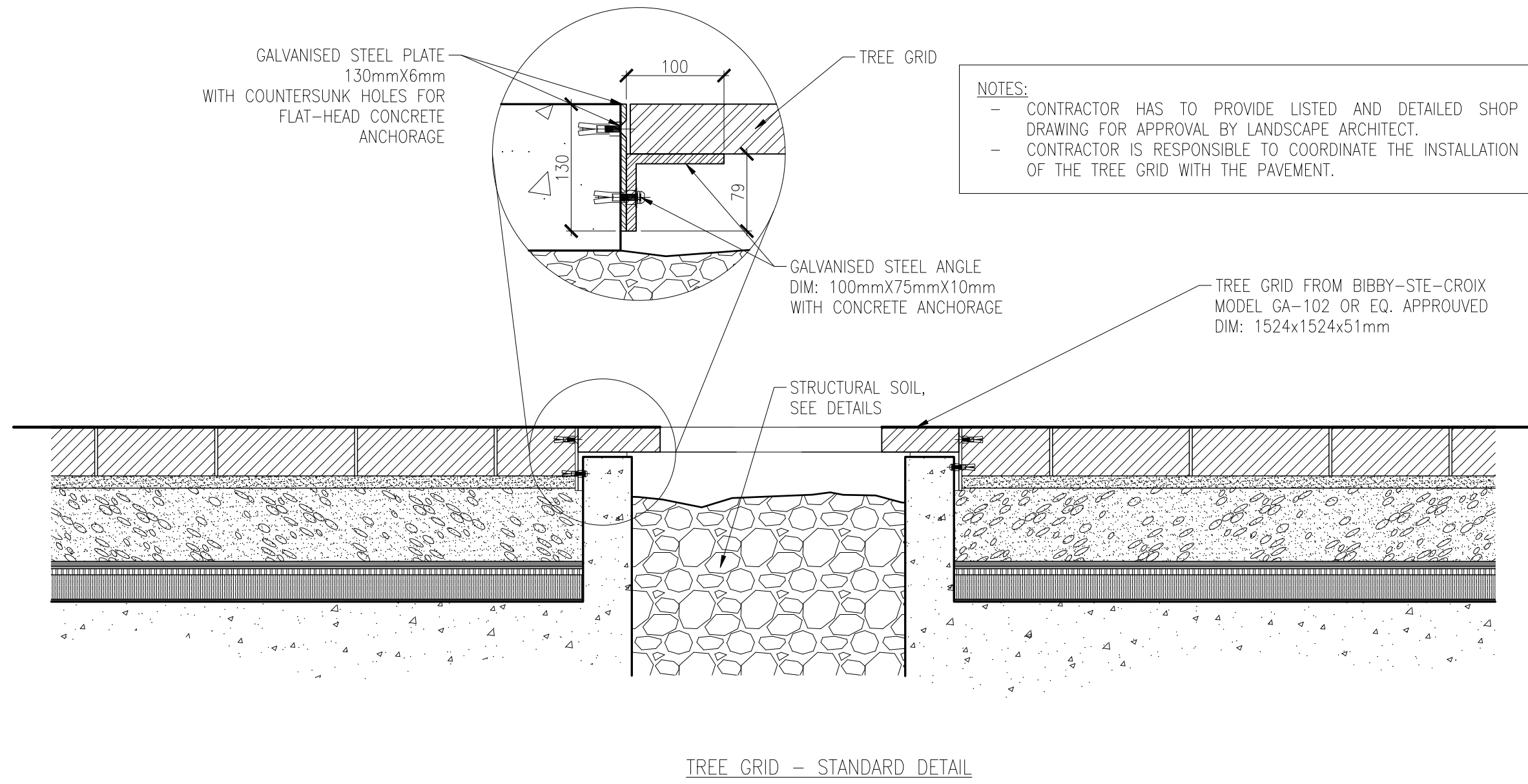
5 POURED CONCRETE WALL
Scale 1:10



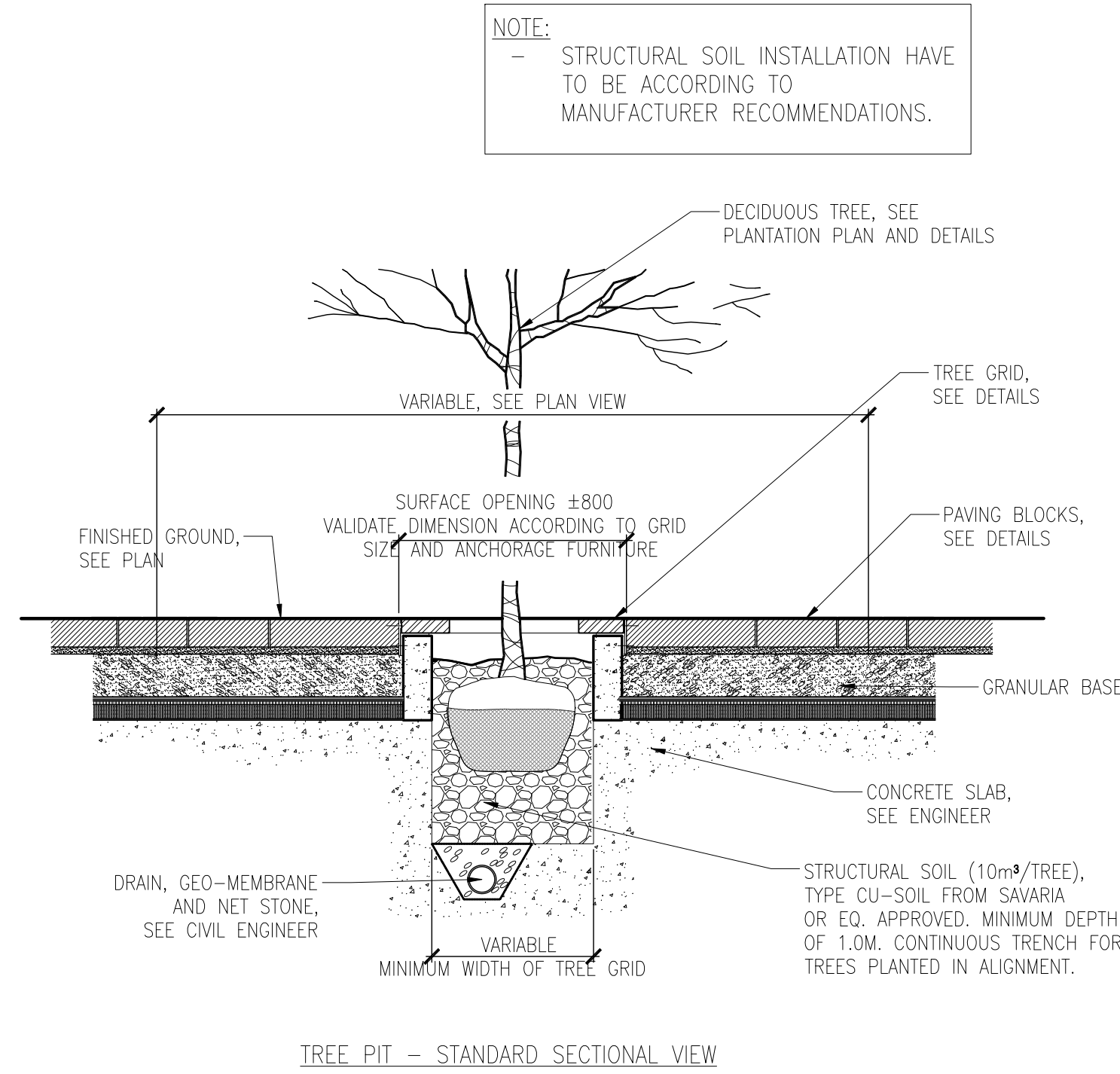
6 CUSTOM WOOD BENCH
Scale 1:10



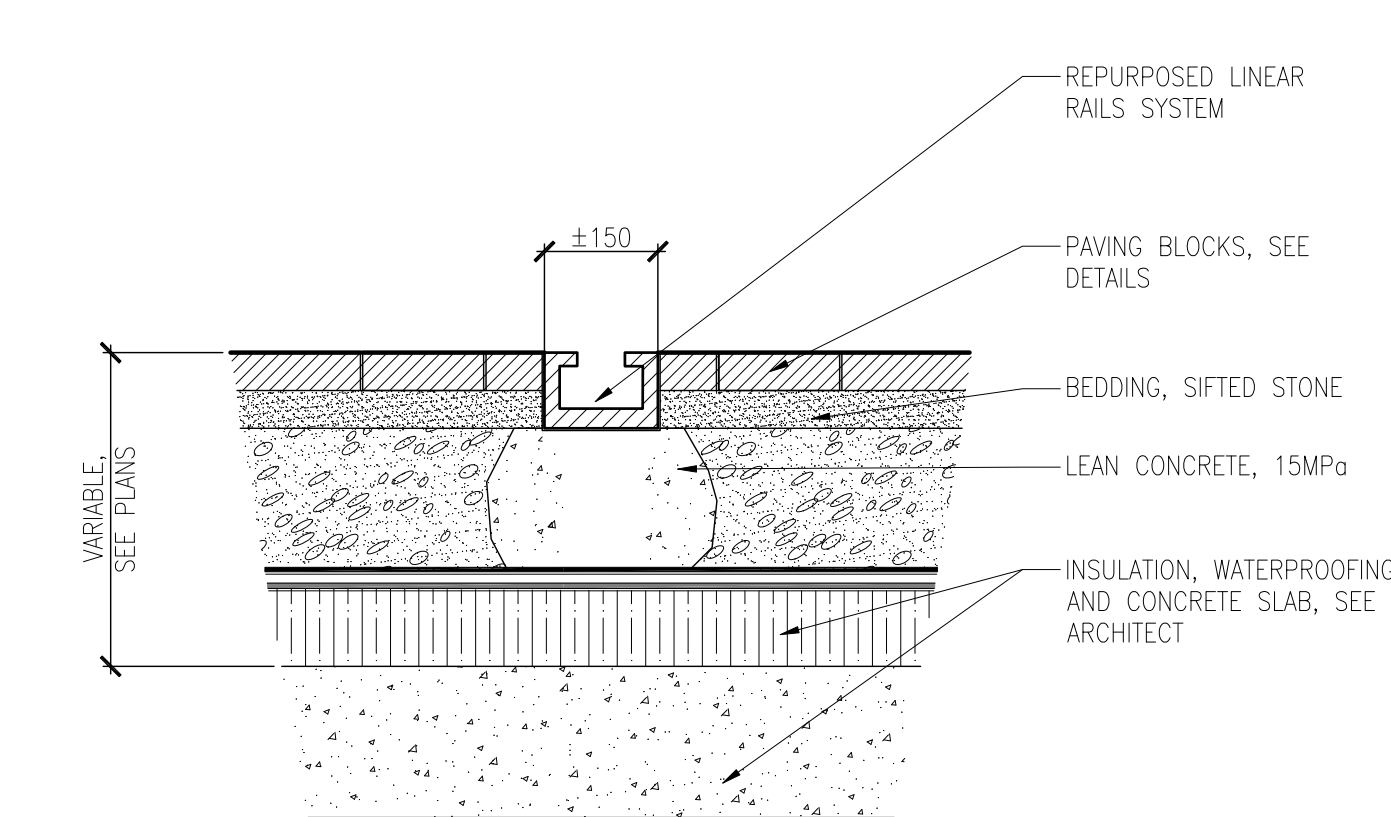
7 STEEL TREE GRATE
Échelle 1:10



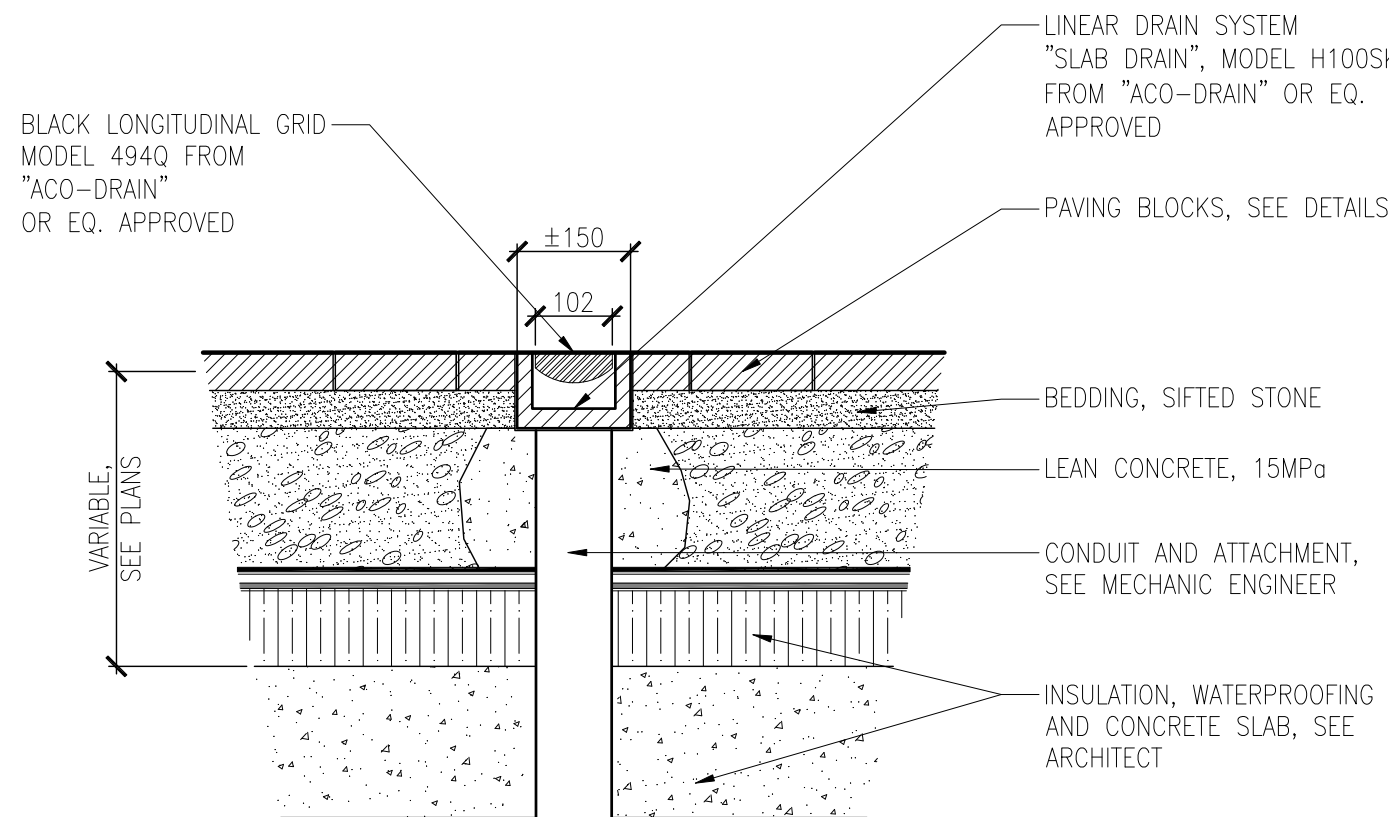
TREE GRID - STANDARD DETAIL



TREE PIT - STANDARD SECTIONAL VIEW



8 REPURPOSED STEEL RAIL
Scale 1:10



9 LINEAR TRENCH DRAIN
Scale 1:10

Revision			
No	Description	Appr.	Date
1	Issued for coordination	S.G.	07/01/2015
2	Issued for coordination	S.G.	07/07/2015
3	Issued for coordination	S.G.	07/09/2015
4	Issued for coordination	S.G.	07/13/2015
5	Issued for site plan control	S.G.	07/16/2015
6	Issued for site plan control	S.G.	08/19/2015
7	Issued for site plan control	S.G.	08/26/2015

Note :

- It is the responsibility of the appropriate contractor or official to report any errors, omissions or discrepancies on this plan with actual site conditions to the Landscape Architect before proceeding with construction.
- The Contractor must not cut down any existing vegetation without the approval of the Project Director.
- Implantation of the works on site must be approved by the Project Director.
- The Contractor must use the Cad file for implantation of all work. The contractor must verify the amounts specified in the schedule and notify the landscape architect of any errors, omissions or contradictions before the close of the bid.
- Existing grades indicated on the plan come from the survey provided by the owner.
- The contractor is to notify all utility companies and authorities prior to any excavation and ascertain locations of underground services.
- The contractor is to reinstate all areas and items damaged as a result of construction activity.
- The contractor is to comply with all pertinent codes and by-laws.
- The contractor is to maintain a positive surface run-off throughout the entire construction period.
- The Landscape Architect is not responsible for subsurface conditions.
- The contractor is to stake the proposed location of all plant material in conjunction with the Landscape Architect prior to excavation.
- All trees within 1m of underground utility trenches are to be excavated by hand.
- Remove all protective wrapping from tree trunks after installation.
- Staking of trees shall only be performed if necessary.
- Ensure that mulch is pulled back a min. distance of 75mm from base of tree trunk.

PROJET | PAYSAGE

24 Mont-Royal W Suite 801 Montreal Quebec H2T 2S2
T: 514.849.7700 F: 514.849.2027 info@projetpaysage.com



Project name

ZIBI
One Planet Community
Ottawa, Ontario

Drawing title

CONSTRUCTION DETAILS

Scale INDICATED

Drawn by:
S.L.X.B/D.L.

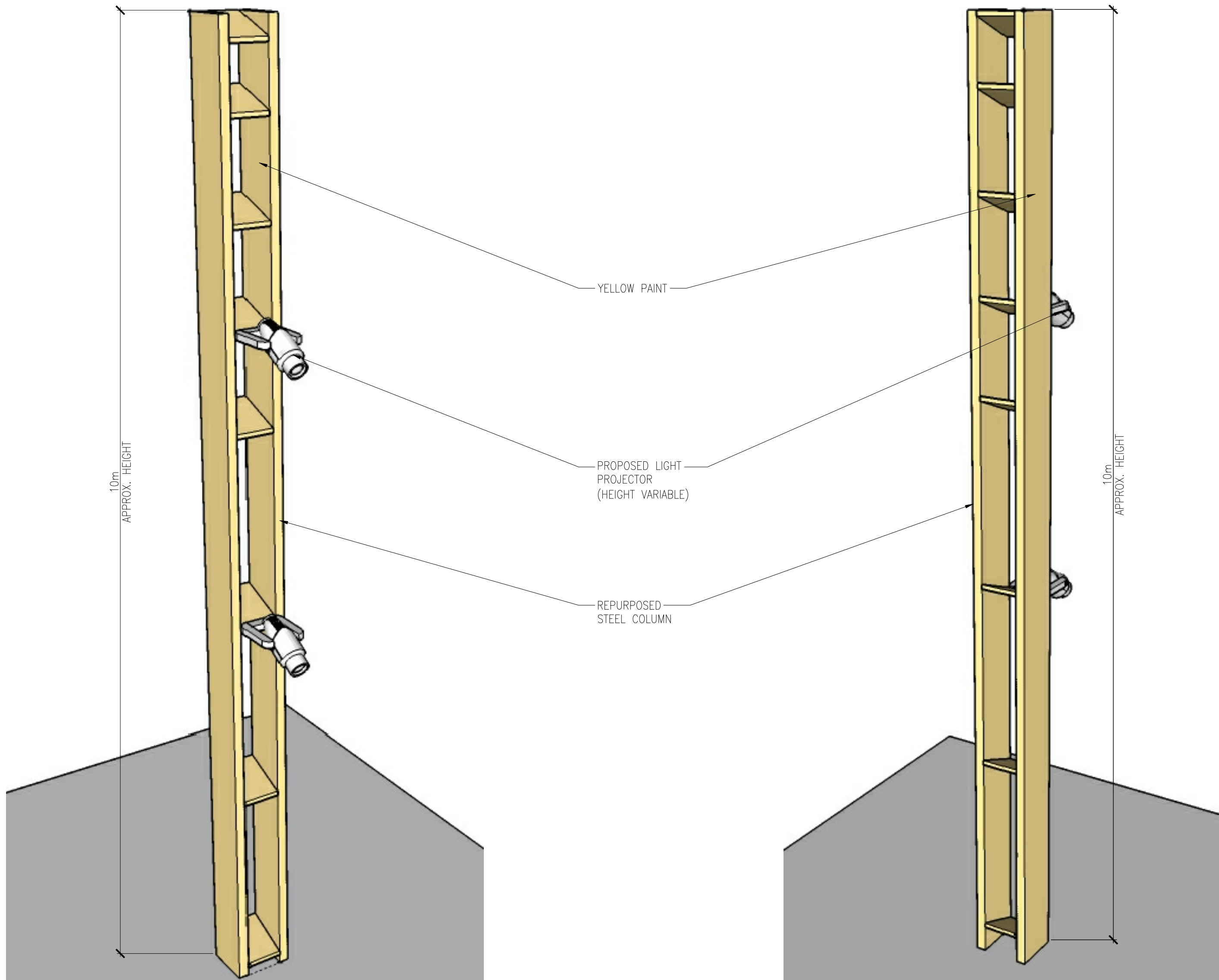
Designed by:
G. Cabanas

Date:
May 2015

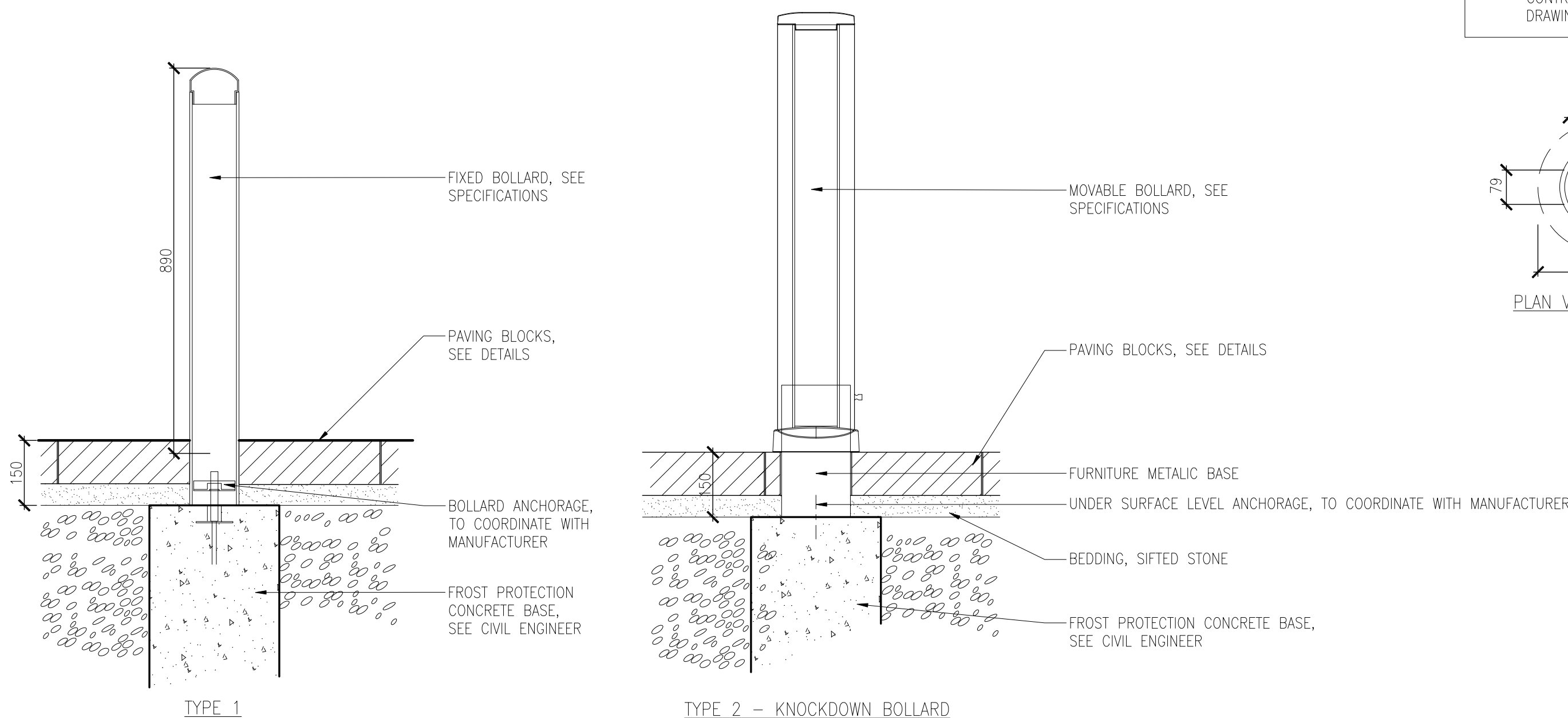
Sheet No.

LA-06

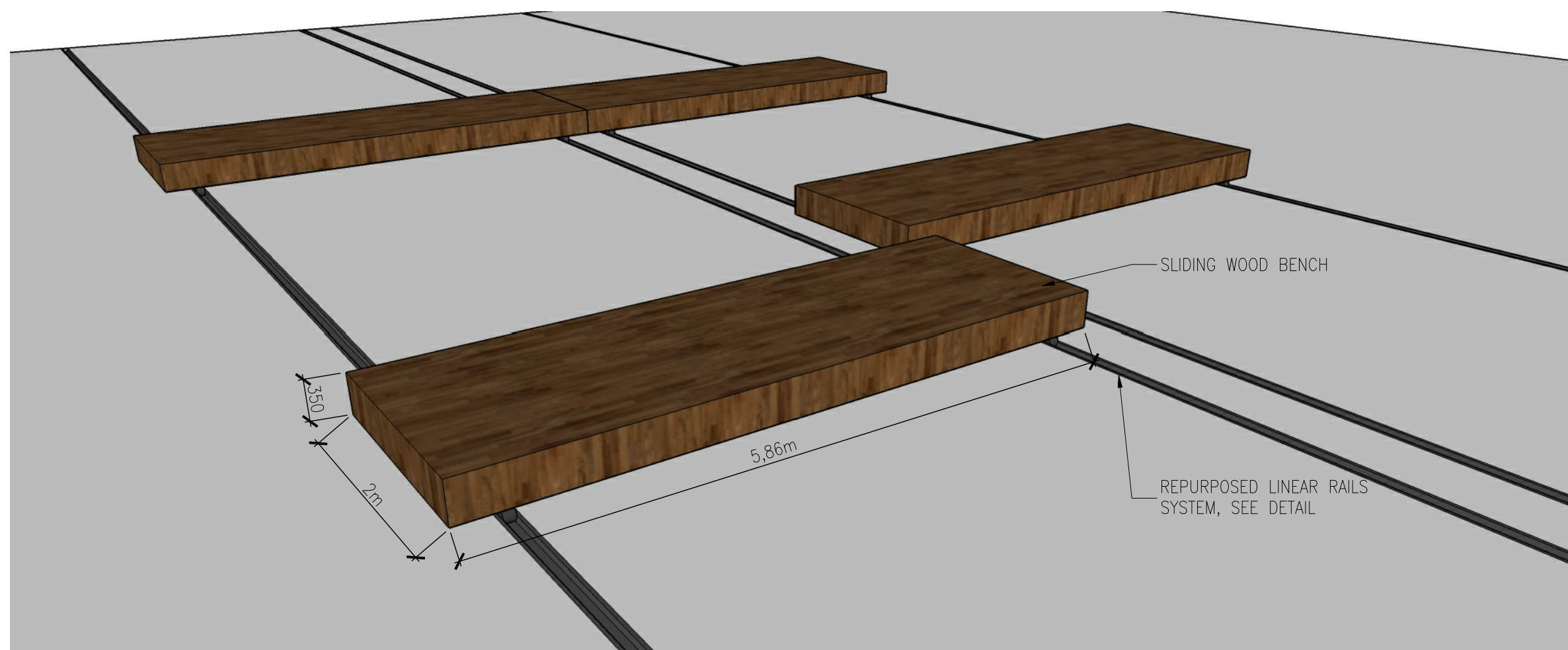
15-346



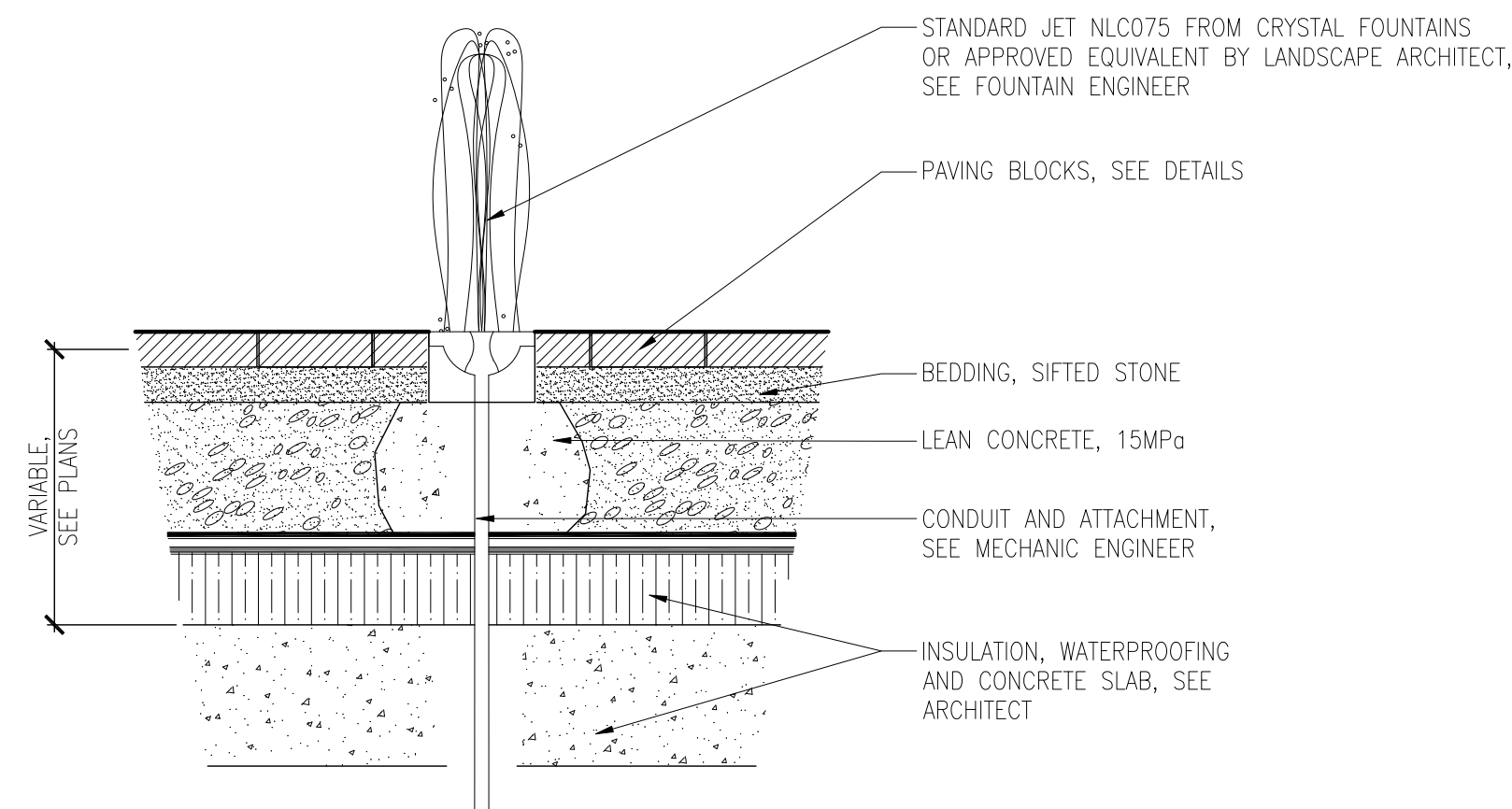
10 REPURPOSED STEEL STRUCTURE
No scale



14 BOLLARDS
Scale 1:10

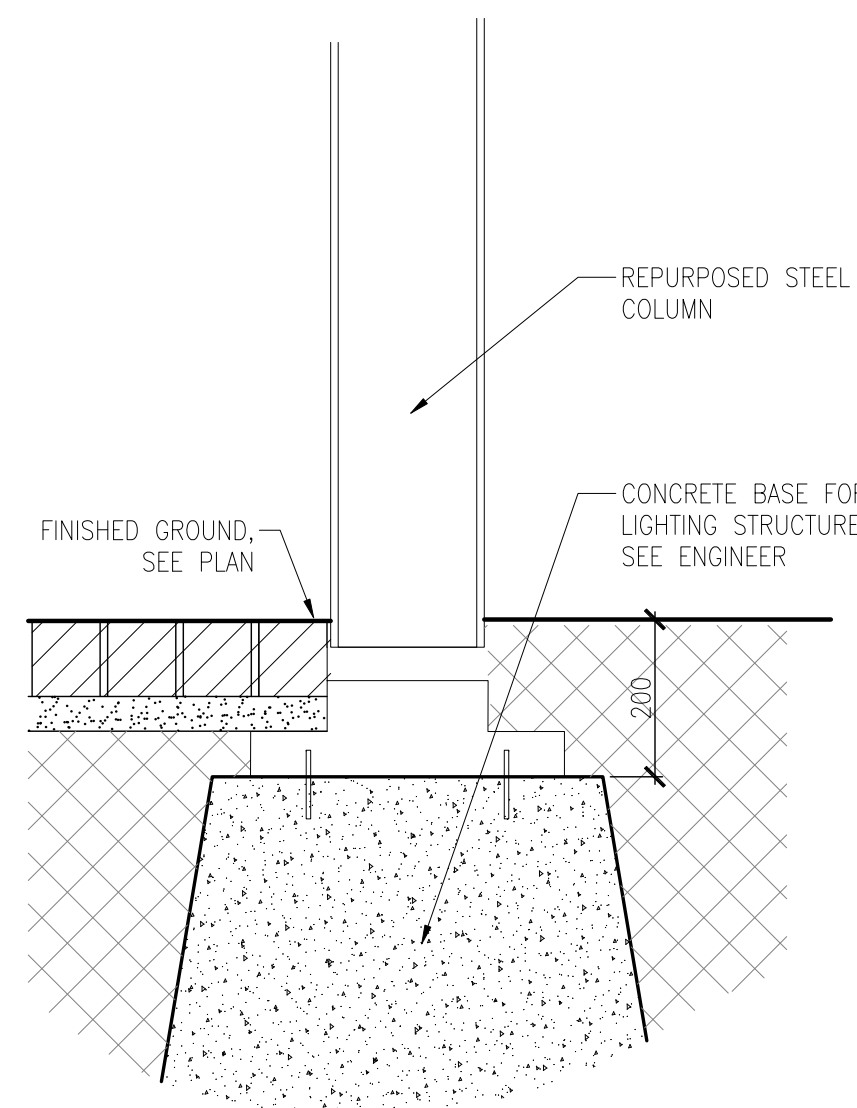


11 CUSTOM SLIDING WOOD BENCH
No Scale



12 WATER JETS
Scale 1:10

NOTE:
- CONCRETE BASE POSITIONING HAS TO BE COORDINATED WITH PAVEMENT INSTALLATION.
- CONTRACTOR IS RESPONSIBLE TO ALIGN EVERY BASE WITH PAVING UNIT, IN A WAY THAT RESPECTS THE PAVING PATTERN.
- LANDSCAPE ARCHITECT MUST APPROVE THE INSTALLATION.



16 LIGHTING
Scale 1:10

Revision			
No	Description	Appr.	Date
1	Issued for coordination	S.G.	07/01/2015
2	Issued for coordination	S.G.	07/07/2015
3	Issued for coordination	S.G.	07/09/2015
4	Issued for coordination	S.G.	07/13/2015
5	Issued for site plan control	S.G.	07/16/2015
6	Issued for site plan control	S.G.	08/19/2015
7	Issued for site plan control	S.G.	08/26/2015

Note :

- It is the responsibility of the appropriate contractor or official to report any errors, omissions or discrepancies on this plan with actual site conditions to the Landscape Architect before proceeding with construction.
- The Contractor must not cut down any existing vegetation without the approval of the Project Director.
- Implantation of the works on site must be approved by the Project Director.
- The Contractor must use the Cad file for implantation of all work. The contractor must verify the amounts specified in the schedule and notify the landscape architect of any errors, omissions or contradictions before the close of the bid.
- Existing grades indicated on the plan come from the survey provided by the owner.
- The contractor is to notify all utility companies and authorities prior to any excavation and ascertain locations of underground services.
- The contractor is to reinstate all areas and items damaged as a result of construction activity.
- The contractor is to comply with all pertinent codes and by-laws.
- The contractor is to maintain a positive surface run-off throughout the entire construction period.
- The Landscape Architect is not responsible for subsurface conditions.
- The contractor is to stake the proposed location of all plant material in conjunction with the Landscape Architect prior to excavation.
- All trees within 1m of underground utility trenches are to be excavated by hand.
- Remove all protective wrapping from tree trunks after installation.
- Staking of trees shall only be performed if necessary.
- Ensure that mulch is pulled back a min. distance of 75mm from base of tree trunk.

PROJET | PAYSAGE

24 Mont-Royal W Suite 801 Montreal Quebec H2T 2S2
T: 514.849.7700 F: 514.849.2027 info@projetpaysage.com



Project name
ZIBI
One Planet Community
Ottawa, Ontario

Drawing title
CONSTRUCTION DETAILS
Scale

Drawn by:
S.L.X.B/D.L.
Designed by:
G. Cabanas
Date:
May 2015
Sheet No.
LA-07
15-346