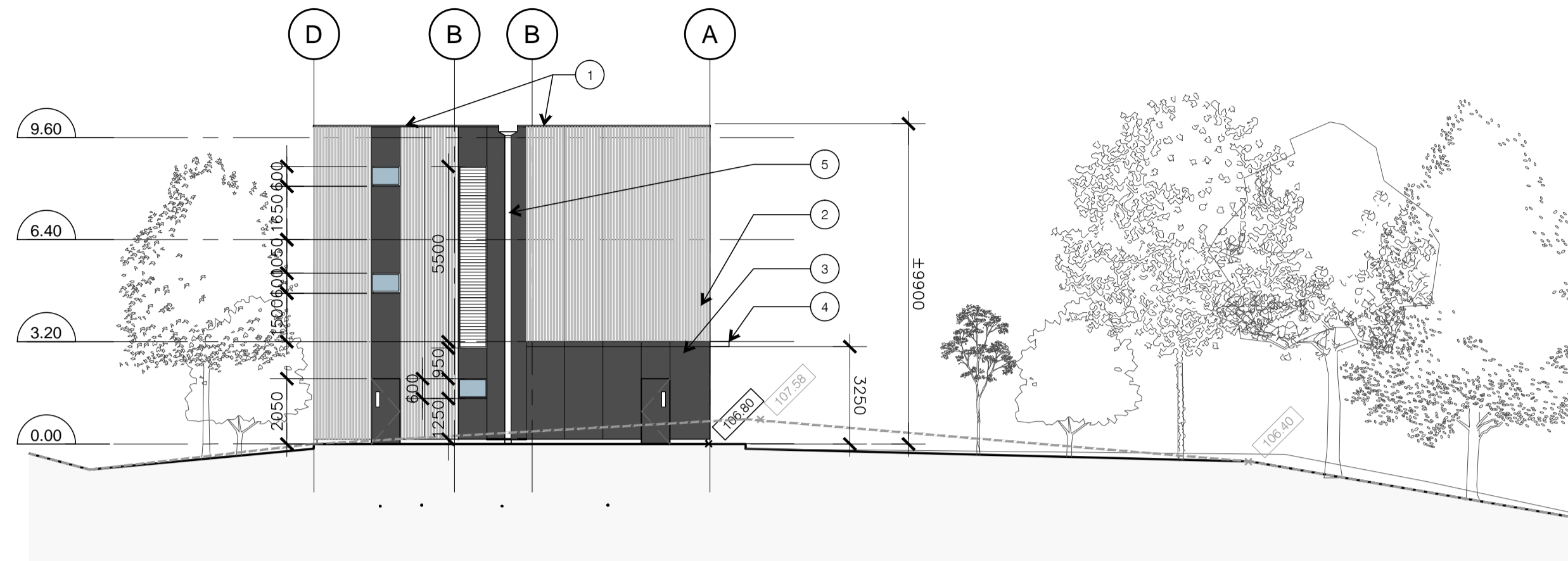


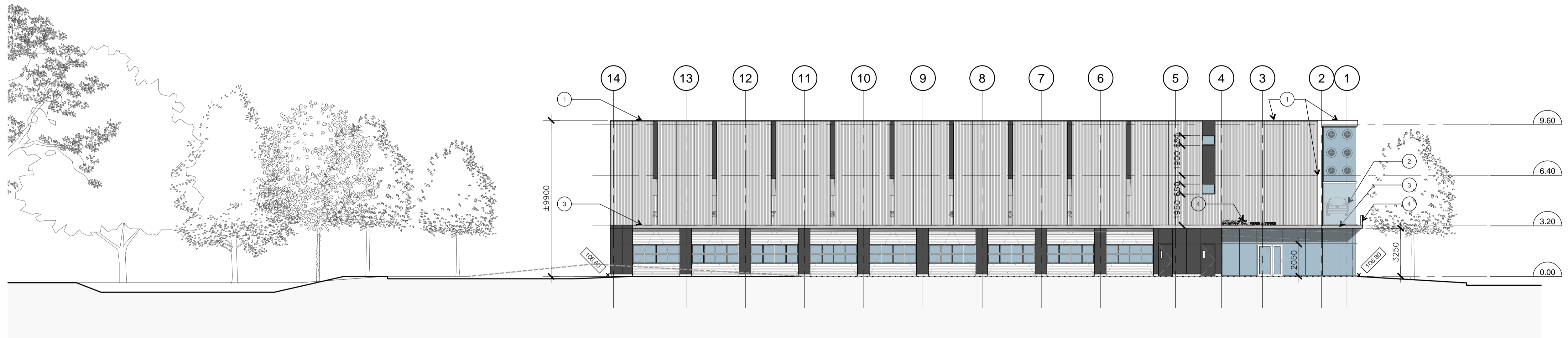
1 NORTH ELEVATION

SCALE 1 : 150



2 SOUTH ELEVATION

SCALE 1 : 150



3 EAST ELEVATION

SCALE 1 : 150



4 WEST ELEVATION

SCALE 1 : 150

NOTES:

Contractor shall check and verify all dimensions on site and report any discrepancies to the Architect before proceeding.

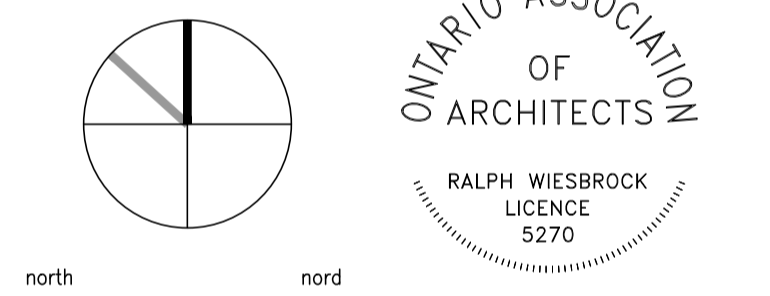
ELEVATION LEGEND:

- PANEL JOINT EXTERIOR PREFINISHED METAL CLADDING
- PANEL JOINT EXTERIOR CONCRETE/FIBRE COMPOSITE CLADDING
- GLAZING JOINT EXTERIOR GLAZED CURTAIN WALL
- TYPICAL WINDOW
- TYPICAL TIRE DECAL LAMINATED TO INTERIOR FACE OF GLAZING
- TYPICAL RIM AND TIRE DISPLAY SUSPENDED IN SPACE BEHIND GLASS
- INDICATES EXISTING GRADE
- INDICATES NEW GRADE
- INDICATES INSULATED PREFINISHED EXTERIOR MAN DOOR AND SWING DIRECTION
- INDICATES PREFINISHED EXTERIOR METAL LOUVER
- INDICATES INSULATED PREFINISHED EXTERIOR OVERHEAD SERVICE DOOR
- 1 INDICATES SERVICE DOOR NUMBER SIGNAGE
- INDICATES RECESSED FLASHING DETAIL IN CLADDING

ELEVATION CONSTRUCTION NOTES:

1. PRE-FINISHED METAL FLASHING
2. CAR DISPLAY BEHIND CURTAIN WALL GLAZING.
3. OVERHANG WITH PRE-FINISHED METAL CLAD FASCIA.
4. EXISTING BUILDING SIGNAGE (TBD).
5. SCUPPER AND ROOF DRAINAGE DOWNSPOUT.
6. INDICATES PROFILE OF FLOORS BEYOND.

1	SITE PLAN CONTROL	08 JUL 2015
no.	revision	date



383 Parkdale Avenue, Suite 201
Ottawa Ontario Canada K1Y 4R4

KWC ARCHITECTS INC.

PHONE (613) 238-2117
FAX (613) 238-6995
E MAIL kwc@kwc-arch.com

detail no.	1	détail no.
sheet no.	A1	feuille no.

project
projet

**KANATA RIMS & TIRES
NEW 3 STOREY BUILDING**

5830 HAZELDEAN RD.,
OTTAWA, ONTARIO

designed by conçu par	RW	approved by approuvé par	RW
drawn by dessiné par	CD	project no. no. du projet	1319
date	16 JUN 2015	scale	as noted

drawing / dessin

BUILDING ELEVATIONS

revision révision	sheet no. no. de la feuille	A300
----------------------	--------------------------------	------

plot scale 1:1