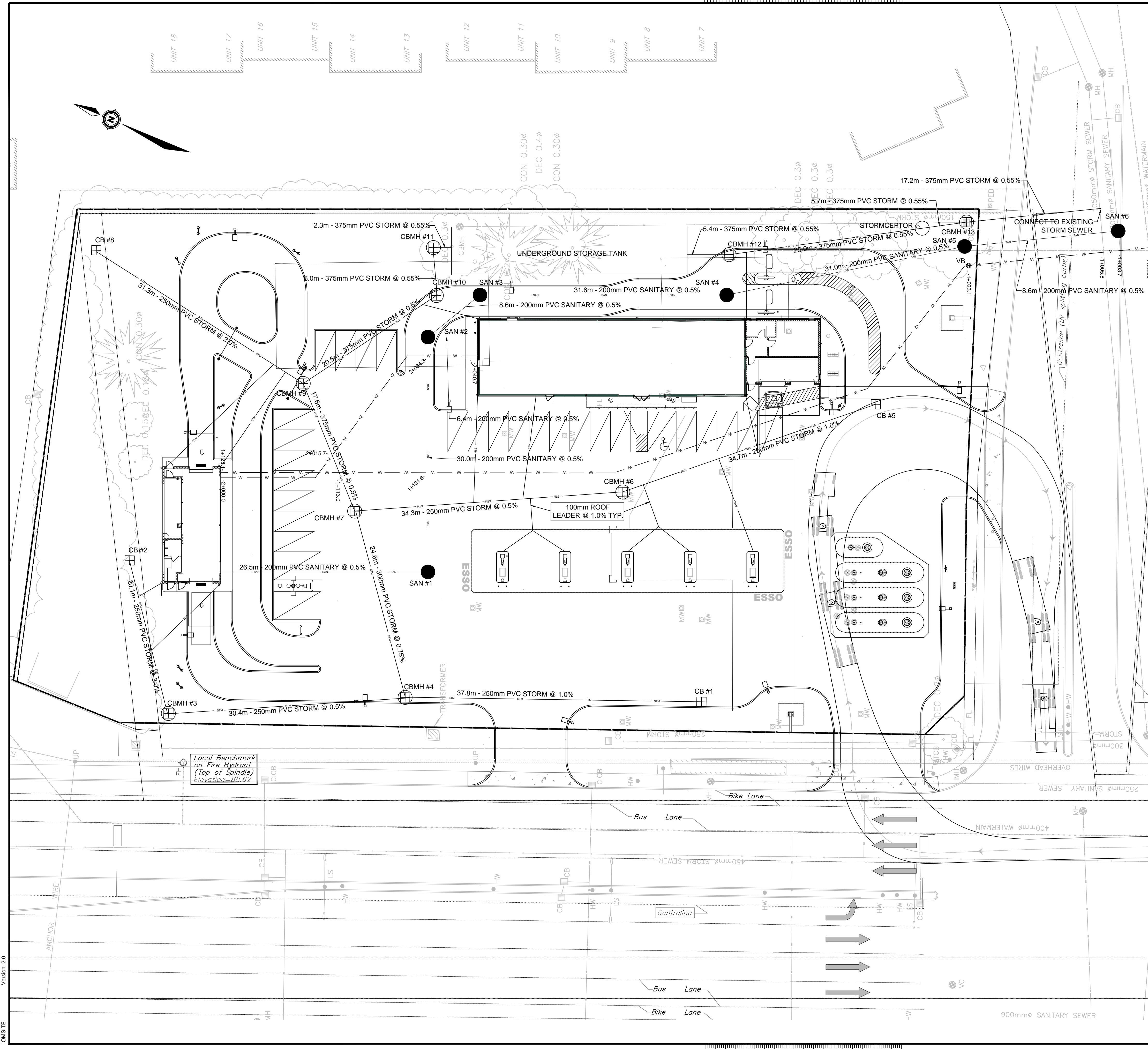


inches 1/8 1 2 3 4



STORM INVERT SCHEDULE

STRUCTURE	TOP	INVERT	COMMENTS
CB#1	88.05	N = 86.30	NEW 600mm x 600mm CATCHBASIN AS PER OPSD 705.010
CB#2	88.45	W = 86.70	NEW 600mm x 600mm CATCHBASIN AS PER OPSD 705.010
CBMH#3	87.85	E = 86.10 S = 86.04	NEW 1200mm DIAMETER MANHOLE WITH 300mm SUMP AS PER OPSD 701.010
CBMH#4	88.05	S = 85.92 N = 85.89 E = 85.83	NEW 1200mm DIAMETER MANHOLE WITH 300mm SUMP AS PER OPSD 701.010
CB#5	88.30	N = 86.55	NEW 600mm x 600mm CATCHBASIN AS PER OPSD 705.010
CBMH#6	88.53	S = 86.20 N = 86.14	NEW 1200mm DIAMETER MANHOLE WITH 300mm SUMP AS PER OPSD 701.010
CBMH#7	88.30	S = 85.97 W = 85.65 E = 85.57	NEW 1200mm DIAMETER MANHOLE WITH 300mm SUMP AS PER OPSD 701.010
CB#8	88.40	S = 86.65	NEW 600mm x 600mm CATCHBASIN AS PER OPSD 705.010
CBMH#9	88.50	N = 85.48 S = 86.02 E = 85.42	NEW 1200mm DIAMETER MANHOLE WITH 300mm SUMP AS PER OPSD 701.010
CBMH#10	88.63	NW = 85.32 S = 85.26	NEW 1200mm DIAMETER MANHOLE WITH 300mm SUMP AS PER OPSD 701.010
CBMH#11	88.40	W = 85.23	NEW 1200mm DIAMETER MANHOLE WITH 300mm SUMP AS PER OPSD 701.010
UNDERGROUND STORAGE	VARIABLES	N = 85.21 S = 84.91	UNDERGROUND STORAGE TANK USING ATLANTIS MATRIX PENTA TANK MODULES. CAPACITY = 380m3
CBMH#12	88.65	N = 85.88 E = 84.82	NEW 1200mm DIAMETER MANHOLE WITH 300mm SUMP AS PER OPSD 701.010
STORMCEPTOR	88.45	N = 84.68 S = 84.68	NEW STORMCEPTOR - MODEL STC 750
CBMH#13	88.15	N = 84.65 S = 84.58	NEW 1200mm DIAMETER MANHOLE WITH 300mm SUMP AS PER OPSD 701.010
EXISTING SEWER	87.96	N = 84.48 E = EXISTING	TIE INTO EXISTING SEWER AS PER S11

SANITARY INVERT SCHEDULE

STRUCTURE	TOP	INVERT	COMMENTS
CONNECTION TO CAR WASH	88.90	SEE MECHANICAL	CONNECT TO BUILDING SERVICES
SAN MH#1	88.50	N = 86.57 S = 86.51	NEW 1200mm DIAMETER MANHOLE AS PER OPSD 701.010
CONNECTION TO C-STORE	89.03	SEE MECHANICAL	CONNECT TO BUILDING SERVICES
SAN MH#2	88.75	W = 86.36 S = 86.80 SE = 86.30	NEW 1200mm DIAMETER MANHOLE AS PER OPSD 701.010
SAN MH#3	88.70	NW = 86.26 S = 86.20	NEW 1200mm DIAMETER MANHOLE AS PER OPSD 701.010
SAN MH#4	88.80	N = 86.04 S = 85.98	NEW 1200mm DIAMETER MANHOLE AS PER OPSD 701.010
SAN MH#5	88.20	N = 85.82 S = 85.76	NEW 1200mm DIAMETER MANHOLE AS PER OPSD 701.010
SAN MH#6	87.92	N = 85.72 E = EXISTING W = EXISTING	NEW 1200mm DIAMETER MANHOLE AS PER OPSD 701.010

PRIVATE WATERMAIN TABLE

STATION	DESCRIPTION	TOP OF PIPE ELEVATION	GROUND ELEVATION	COMMENTS
1+000.0	CONNECTION TO 300mm DIAMETER WATERMAIN	86.17	88.15	CONNECTION TO CITY SERVICES
1+003.7	SANITARY CROSSING	85.52	87.92	WATERMAIN CROSSES OVER SANITARY PER W25.2. CLEARANCE = 2.52m
1+005.8	STORM CROSSING	85.56	87.96	WATERMAIN CROSSES OVER STORM PER W25.2. CLEARANCE = 2.17m
1+023.1	VALVE BOX	85.88	88.28	NEW VALVE BOX PER W24
1+101.6	SANITARY CROSSING	87.00	88.60	WATERMAIN CROSSES OVER SANITARY PER W25.2. CLEARANCE = 0.25m
1+113.0	STORM CROSSING	86.27	88.34	WATERMAIN CROSSES OVER STORM PER W25.2. CLEARANCE = 0.25m
1+128.1	CONNECTION TO BUILDING	86.50	88.90	CONNECTION TO CARWASH BUILDING
2+000.0	CONNECTION TO BUILDING	86.50	88.90	CONNECTION TO CARWASH BUILDING
2+015.0	STORM CROSSING	86.25	88.35	WATERMAIN CROSSES OVER STORM PER W25.2. CLEARANCE = 0.25m
2+034.3	SANITARY CROSSING	86.87	88.77	WATERMAIN CROSSES OVER SANITARY PER W25.2. CLEARANCE = 0.25m
2+040.7	CONNECTION TO BUILDING	86.63	89.03	CONNECTION TO C-STORE BUILDING

LEGEND:

- EXISTING STORM SEWER
- EXISTING SANITARY SEWER
- EXISTING WATERMAIN
- PROPOSED WATERMAIN
- PROPOSED STORM SEWER
- PROPOSED SANITARY SEWER
- DRAINAGE AREA BOUNDARY
- DRAINAGE AREA BOUNDARY
- EXISTING FIRE HYDRANT
- EXISTING VALVE BOX
- EXISTING SAN MH
- EXISTING STM CB
- EXISTING STM MH
- PROPOSED SAN MH
- PROPOSED STM CBMH
- PROPOSED STM CB
- EXISTING ELEVATION
- PROPOSED ELEVATION

Imperial Oil
Esso
Imperial

FIELD MARKETING
ASSET MANAGEMENT - ENGINEERING SERVICES
MARKETING DES CALIBRANTS
GESTION DES ACTIFS - SERVICES D'INGENIERIE

90 WOODROFF DRIVE
TORONTO, ONTARIO
M8C 1K5

Date	#	Revision
15 03 02	01	ISSUED FOR SITE PLAN APPROVAL
15 04 09	02	REVISED FOR COMMENTS

Project/Project
1345 WOODROFF AVE. & MEDHURST DR
OTTAWA, ONTARIO

Title/Title
PROPOSED SITE SERVICES

Scale (227x347)
Echelle 1:250

Scale (117x171)
Echelle 1:500

Date
15 03 02

By/Par
RVA

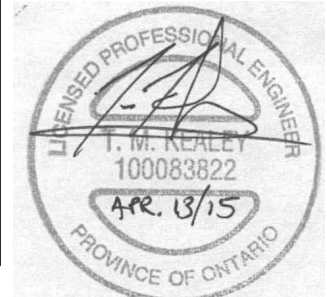
PM/Sup
TMK

Sheet/Feuille
001

PBL No. PBL 0000302287-03P
SAP No. SAP 88001626-03P

Estimate
Proposition: 01

Rev. No./Rev.
02



Version: 2.0
DWG SITE

mm 0 1 2 3 4 5 6 7 8 9 10

Do not explode, alter or rename titleblock