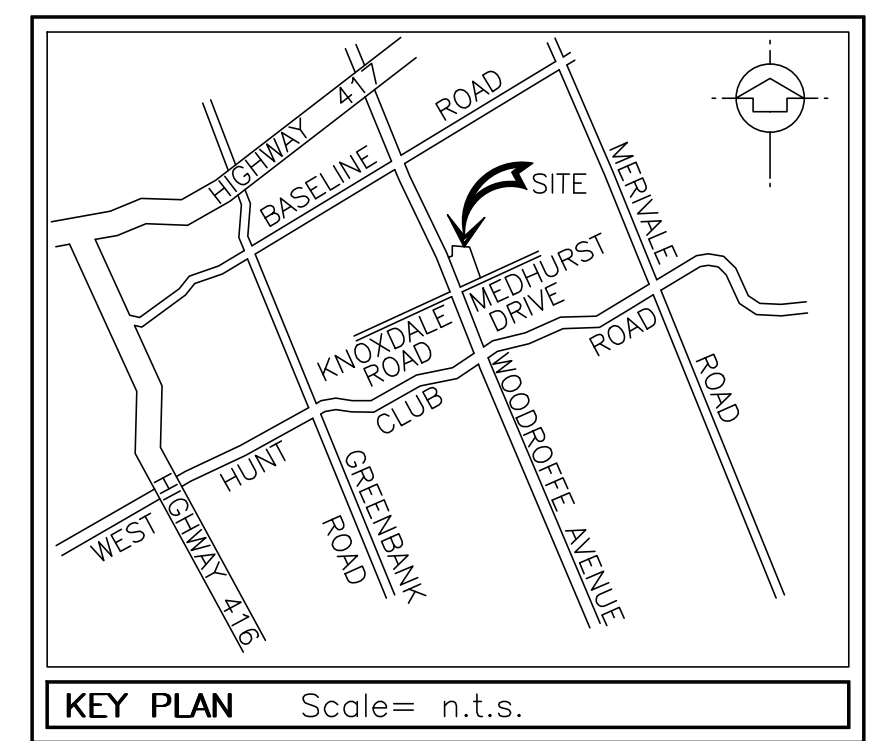


STANDARD No. -

Date	#	Revision
15 08 28	15	ADD PATTERNED STRIP AT DRIVEWAYS AND UPDATED LANDSCAPING AT BUS SHELTER AREA & SITE STATISTICS
15 09 03	16	MOVED AND SIGNS
15 09 16	17	MOVED C-STORE, UPDATED PARKING STAT, MODIFIED MEDHURST ENTRANCE WIDTH & LOCATION
15 11 12	18	UPDATED SOUND BARRIER WALL/BERM HEIGHTS
15 02 20	12	UPDATED MID CURB REMOVED PAY PHONE
15 03 30	13	ADDED SOUND BARRIERS, UPDATED TDL STACKING, PARKING AND SITE STATISTICS
15 07 16	14	UPDATED PER COMMENTS



LEGAL DESCRIPTION  
 PART OF LOT 30  
 PART OF THE ROAD ALLOWANCE  
 BETWEEN LOTS 30 & 31  
 CONCESSION 1 (RIDEAU FRONT)  
 CITY OF OTTAWA  
 (GEOGRAPHIC TOWNSHIP OF NEPEAN)

**SITE STATISTICS**

EXISTING SITE AREA	=	8213.9 sq.m
NEW LOT AREA AFTER PROPOSED ROAD WIDENINGS	=	7818.8 sq.m
C-STORE BUILDING AREA	=	344.0 sq.m
GARBAGE ENCLOSURE AREA	=	78.0 sq.m
CAR WASH BUILDING AREA	=	111.0 sq.m
CANOPY COVERAGE	=	320.0 sq.m
LANDSCAPE AREA	=	2788.7 sq.m
ASPHALT AREA	=	4177.1 sq.m

**PROPOSED PARKING SPACES** = 24 (INCLUDES 23 REGULAR WITH 1 ACCESSIBLE SPACE)  
 + 2 VACUUM AND 1 LOADING SPACE

**REQUIRED PARKING SPACES** = 15 (WITH 1 RESERVED FOR ACCESSIBLE)

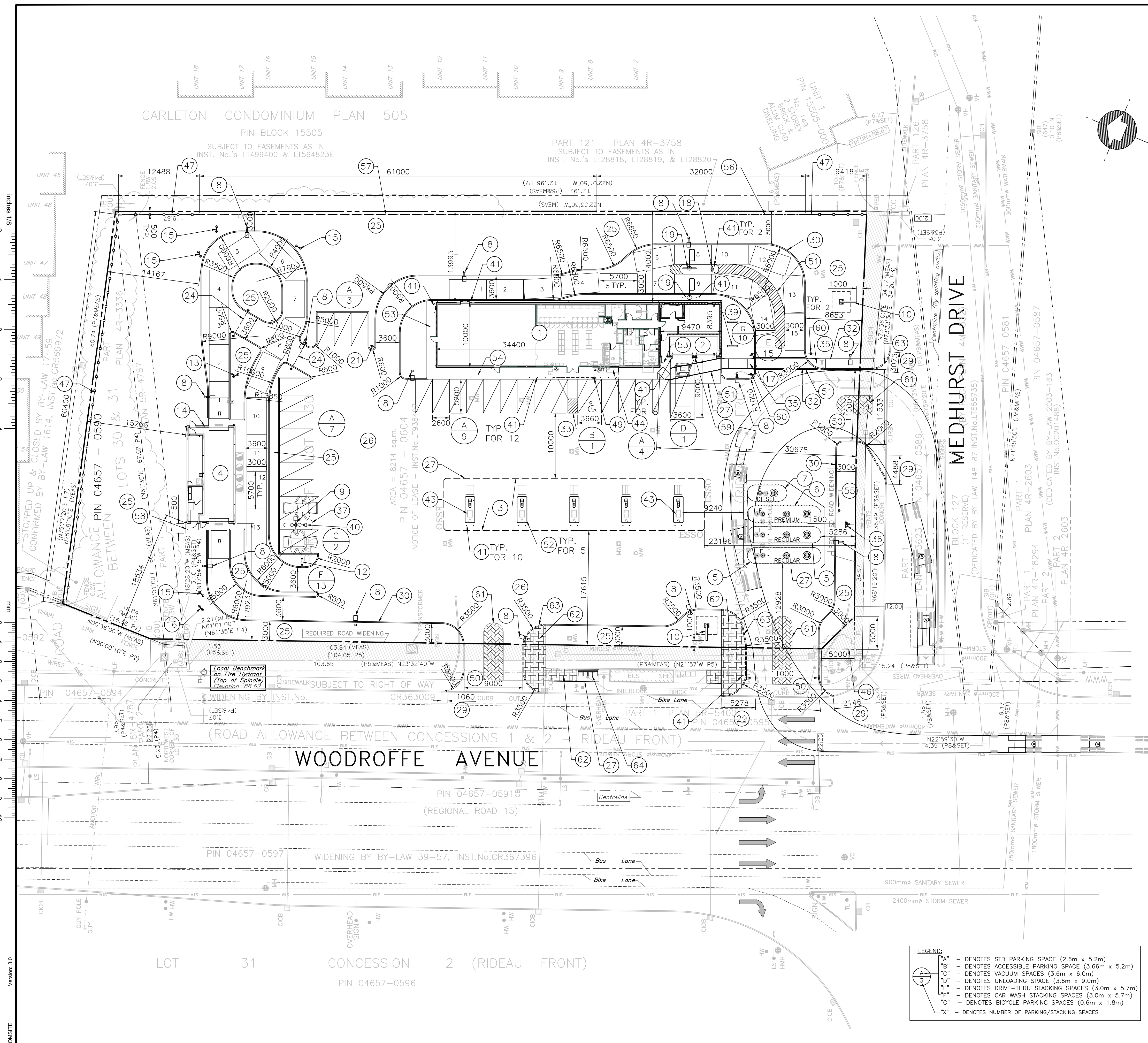
**CALCULATIONS:**  
 BUILDING GROSS FLOOR AREA (G.F.A.) = 268.7m<sup>2</sup> TOTAL = C-STORE  
 127.7m<sup>2</sup> G.F.A + DRIVE-THRU RESTAURANT 141m<sup>2</sup> G.F.A  
 C-STORE = 127.7m<sup>2</sup> x 3.4/100m<sup>2</sup> = 4.3  
 DRIVE-THRU RESTAURANT = 141m<sup>2</sup> x 10/100m<sup>2</sup> = 14.1 - 20% = 11  
 C-STORE STACKING SPACES REQUIRED 11  
 C-STORE STACKING SPACES PROPOSED 15

**LEGEND: No=Item Number T=Total N=New E=Existing R=Relocate**

No	T	N	E	R	Description
1	1	1			C-Store (10m x 34.4m)
2	1	1			Double Attached Garbage Enclosure
3	1	1			Canopy (8m x 40m)
4	1	1			Car Wash (7.4m x 15.0m)
5	2	2			Regular Tank (Double Wall Fiberglass, 50kL)
6	1	1			Premium Tank (Double Wall Fiberglass, 50kL)
7	1	1			Diesel Tank (Double Wall Fiberglass, 25kL)
8	13	13			Single LED Light Standard (TYP)
9	1	1			Double LED Light Standard (TYP)
10	2	2			M.I.D. (2500 series) - Major Identification Sign (8m Max Height)
11	-	-	-	-	CAR WASH SIGNS
11	-	-	-	-	Overhead Boom Sign
12	1	1			Hours of Operation
13	1	1			Instructional Sign
14	1	1			Disclaimer Sign
15	4	4			Promotional Sign
16	1	1			Exit Sign
17	-	-	-	-	TDL SIGNS
17	1	1			Entrance Sign
18	1	1			Pre-menu board
19	2	2			Integrated Speaker and Menu Board
20	1	1			Caution Pedestrian Crossing Sign
21	1	1			Exit Sign
22	-	-	-	-	Stop Sign
23	-	-	-	-	Painted Stop Line
24	2	2			Chain across Escape Lane
25	-	-	-	-	Landscape
26	-	-	-	-	Asphalt
27	3	3			Concrete Apron/Pad
28	-	-	-	-	Curb Fill/Close Existing Access
29	5	5			Curb Cut (New Access)
30	-	-	-	-	Concrete Curbing (Typical)
31	-	-	-	-	Existing Curb to be removed (typical)
32	1	1			1500 Wide Concrete Pedestrian Walkway connecting store to sidewalk
33	1	1			Barrier-Free Access Ramp
34	1	1			New Concrete Sidewalk
35	-	-	-	-	Depressed curb at sidewalk
36	1	1			Vent Rack
37	1	1			Vacuum Island c/w 2 vacuums
38	-	-	-	-	Payphone
39	2	2			Bike Rack (See Landscape dwg.)
40	1	1			Tireflator on concrete pad
41	-	-	-	-	Bollard
42	-	-	-	-	Hydro Transformer (Dimension)
43	2	2			3+1 Combo Gasoline/Diesel Dispenser
44	1	1			Propane Cage
45	-	-	-	-	1000mm Safety Hand Railing
46	1	1			5m Daylight Triangle
47	1	1			Board-on-board 1830 Privacy Fence
48	-	-	-	-	Retaining Wall
49	1	1			Rb-93 'BY PERMIT ONLY' Sign
50	2	2			Access
51	-	-	-	-	Painted Line
52	5	5			Concrete Pump Island
53	2	2			1500 wide Sidewalk
54	1	1			1800 wide Sidewalk
55	1	1			Rb-51 'NO PARKING' Sign
56	1	1			3.0m high Sound Barrier on 0.25m high berm x 32m Long (Total Height= 3.25m)
57	1	1			2.3m high Sound Barrier x 61m Long
58	1	1			3.0m high Sound Barrier x 1.5m Long
59	1	1			No Parking - Loading Zone Sign
60	2	2			Pedestrian Crossing Sign (Ra-4L/R)
61	3	3			3m Wide Patterned Concrete 'Flush Contrast Strip' Centered on Driveway
62	-	-	-	-	Interlocking paver stones
63	-	-	-	-	Depressed curb
64	1	1			Relocated transit stop bench

**LEGEND:**

"A"	- DENOTES STD PARKING SPACE (2.6m x 5.2m)
"B"	- DENOTES ACCESSIBLE PARKING SPACE (3.66m x 5.2m)
"C"	- DENOTES VACUUM SPACES (3.6m x 6.0m)
"D"	- DENOTES UNLOADING SPACE (3.6m x 9.0m)
"E"	- DENOTES DRIVE-THRU STACKING SPACES (3.0m x 5.7m)
"F"	- DENOTES CAR WASH STACKING SPACES (3.0m x 5.7m)
"G"	- DENOTES BICYCLE PARKING SPACES (0.6m x 1.8m)
"X"	- DENOTES NUMBER OF PARKING/STACKING SPACES



Project/Prop	145 WOODROFFE AVE. & MEDHURST DR OTTAWA, ONTARIO
Scale	1:300
Scale	1:600
Date	14 03 17
By/Rev	Ame/FTW 176071
PM/Rev	D.G.
Sheet/Feuille	000
Rev No./Rev	18
Proposition:	000
SAP No. - SAP	88001626-02P
PLN No. - PLN	0000302287-02P