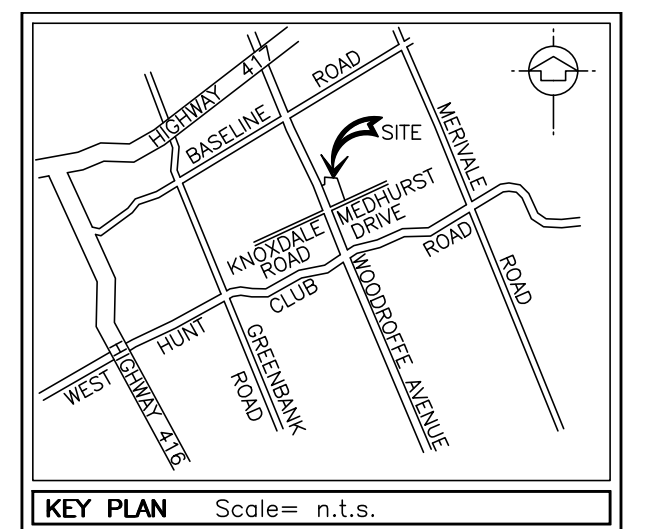
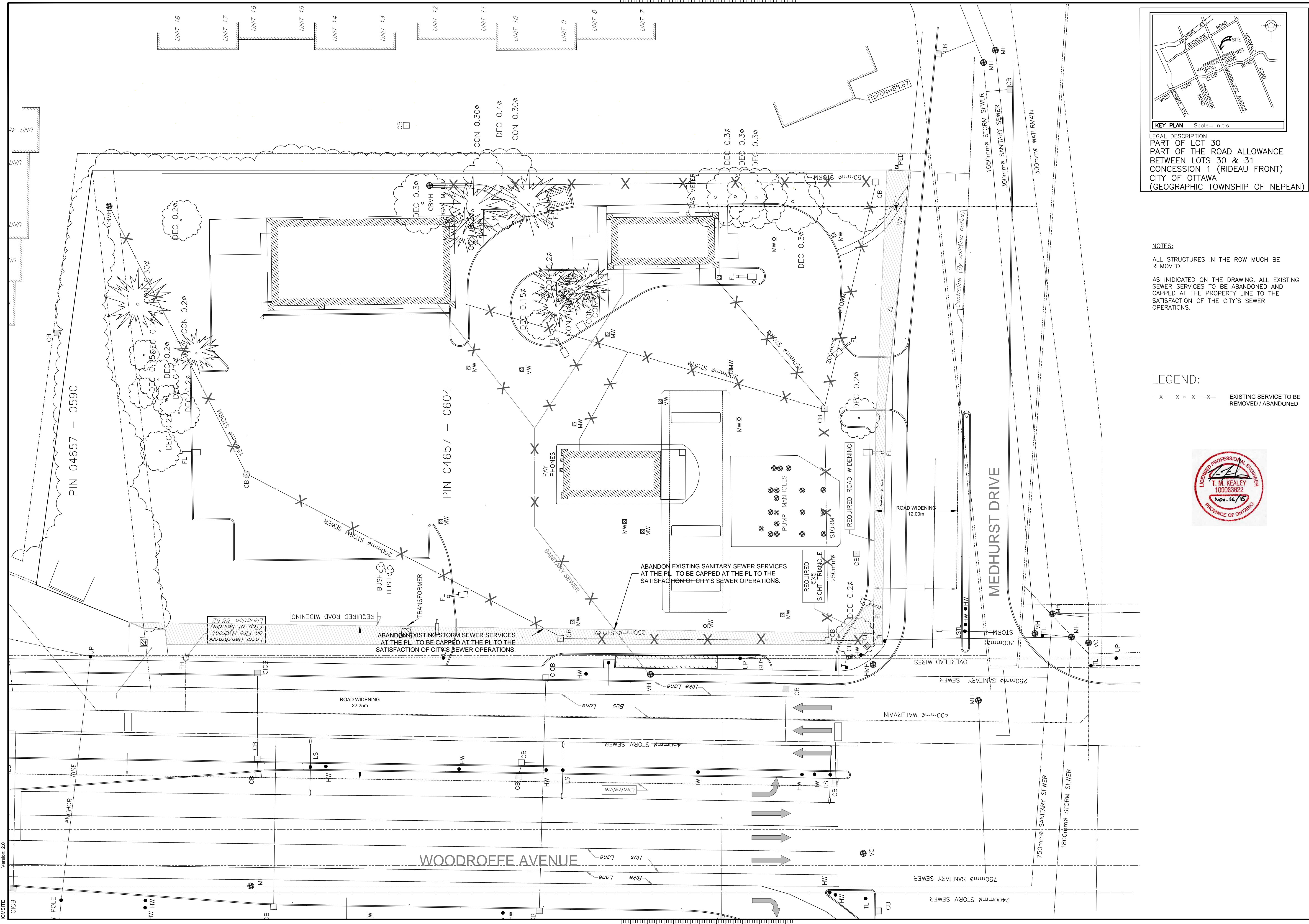


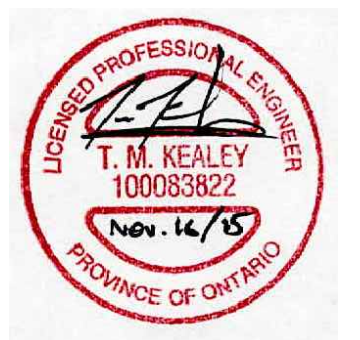
inches 1/8 0 1 2 3 4 5 6 7



LEGAL DESCRIPTION
 PART OF LOT 30
 PART OF THE ROAD ALLOWANCE
 BETWEEN LOTS 30 & 31
 CONCESSION 1 (RIDEAU FRONT)
 CITY OF OTTAWA
 (GEOGRAPHIC TOWNSHIP OF NEPEAN)

NOTES:
 ALL STRUCTURES IN THE ROW MUCH BE REMOVED.
 AS INDICATED ON THE DRAWING, ALL EXISTING SEWER SERVICES TO BE ABANDONED AND CAPPED AT THE PROPERTY LINE TO THE SATISFACTION OF THE CITY'S SEWER OPERATIONS.

LEGEND:
 X X X X X EXISTING SERVICE TO BE REMOVED / ABANDONED



Imperial Oil **Imperial**

FIELD'S MARKETING
 ASSET MANAGEMENT - ENGINEERING SERVICES
 MARKETING DIST. CABRIERANS
 GESTION DES ACTIFS - SERVICES D'INGENIERIE

90 WYNBORO DRIVE
 TORONTO, ONTARIO
 M6C 1K5

Date	#	Revision	By
15 02 06	08	ISSUED FOR SITE PLAN APPROVAL	TKK
15 04 09	02	REVISED FOR COMMENTS	TKK
15 10 21	03	REVISED FOR COMMENTS	TKK
15 11 16	04	REVISED FOR COMMENTS	TKK

Project/Project
 1345 WOODROFFE AVE. & MEDHURST DR
 OTTAWA, ONTARIO

PBL No. PBL 0000302287-03P
 SAP No. SAP 88001626-03P

Title/Title
 EXISTING CONDITIONS & REMOVAL PLAN

Scale (22.25m) Scale (11.117m) Date 15 03 02
 Echelle 1:250 Echelle 1:500

By/Par NR P.M./G.P. T.M.K.
 Rev/No./Rev 3

Sheet/Feuille: 003
 Schemata Proposition: 01
 Sheet/Feuille: 003