

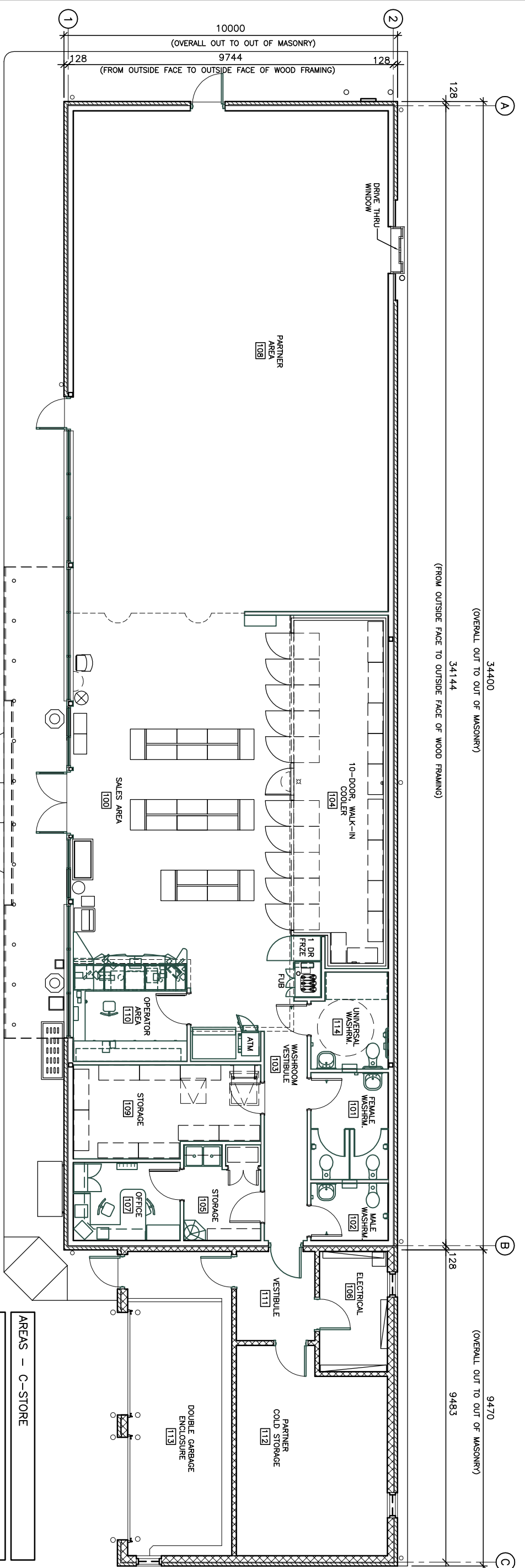


Date	#	Revision
14 03 14	0	ISSUED FOR REVIEW
15 02 10	1	ISSUED FOR REVIEW
15 02 20	2	REVISED WASHROOMS
15 03 04	3	REVISED WASHROOMS
15 03 30	4	DOWNSPROUT ADDED TO FRONT ELEVATION
15 04 06	5	REVISED AREA TABLES TO CITY INSTRUCTIONS

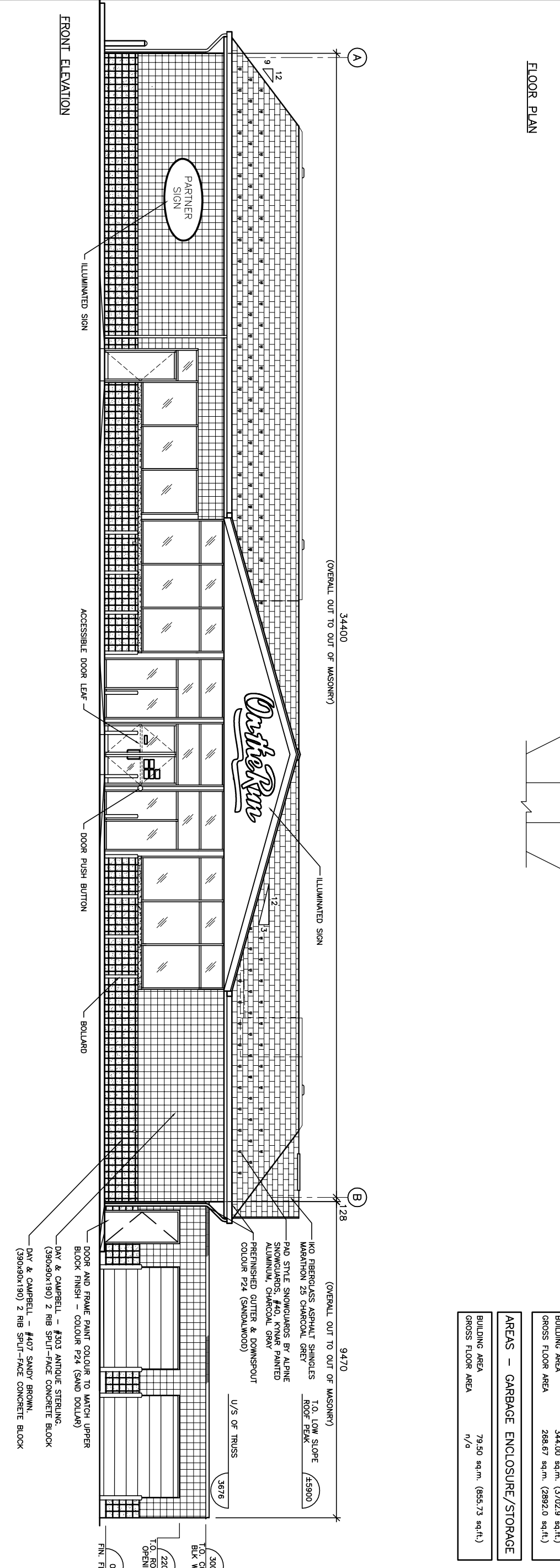
Project/Title	Scale	Scale	Date	By/Par
1545 WOODROFFE AVE. & MEDHURST DR OTTAWA, ONTARIO	1:125	1:125	14 03 14	AMEC (176071)
1545 WOODROFFE AVE. & MEDHURST DR OTTAWA, ONTARIO	n/a	n/a	14 03 14	AMEC (176071)
1545 WOODROFFE AVE. & MEDHURST DR OTTAWA, ONTARIO	n/a	n/a	14 03 14	AMEC (176071)

Project/Title	Scale	Scale	Date	By/Par
1545 WOODROFFE AVE. & MEDHURST DR OTTAWA, ONTARIO	1:125	1:125	14 03 14	AMEC (176071)
1545 WOODROFFE AVE. & MEDHURST DR OTTAWA, ONTARIO	n/a	n/a	14 03 14	AMEC (176071)
1545 WOODROFFE AVE. & MEDHURST DR OTTAWA, ONTARIO	n/a	n/a	14 03 14	AMEC (176071)

STANDARD No. XXXXXN



AREAS - C-STORE	BUILDING AREA	GROSS FLOOR AREA
	344.00 sq.m. (3702.9 sq.ft.)	268.67 sq.m. (2892.0 sq.ft.)
AREAS - GARBAGE ENCLOSURE/STORAGE		
	79.50 sq.m. (855.73 sq.ft.)	n/a



Version: 3.0
10MSITE