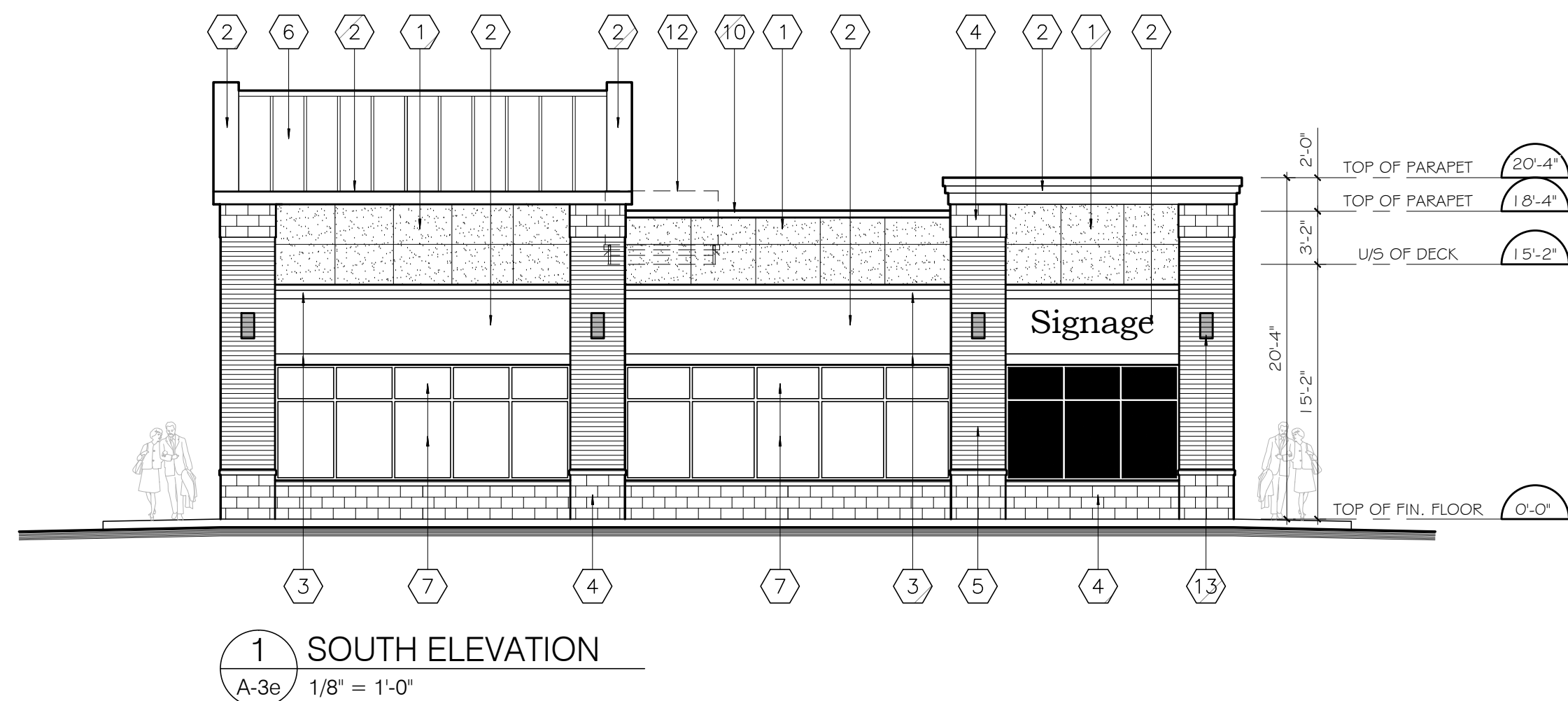
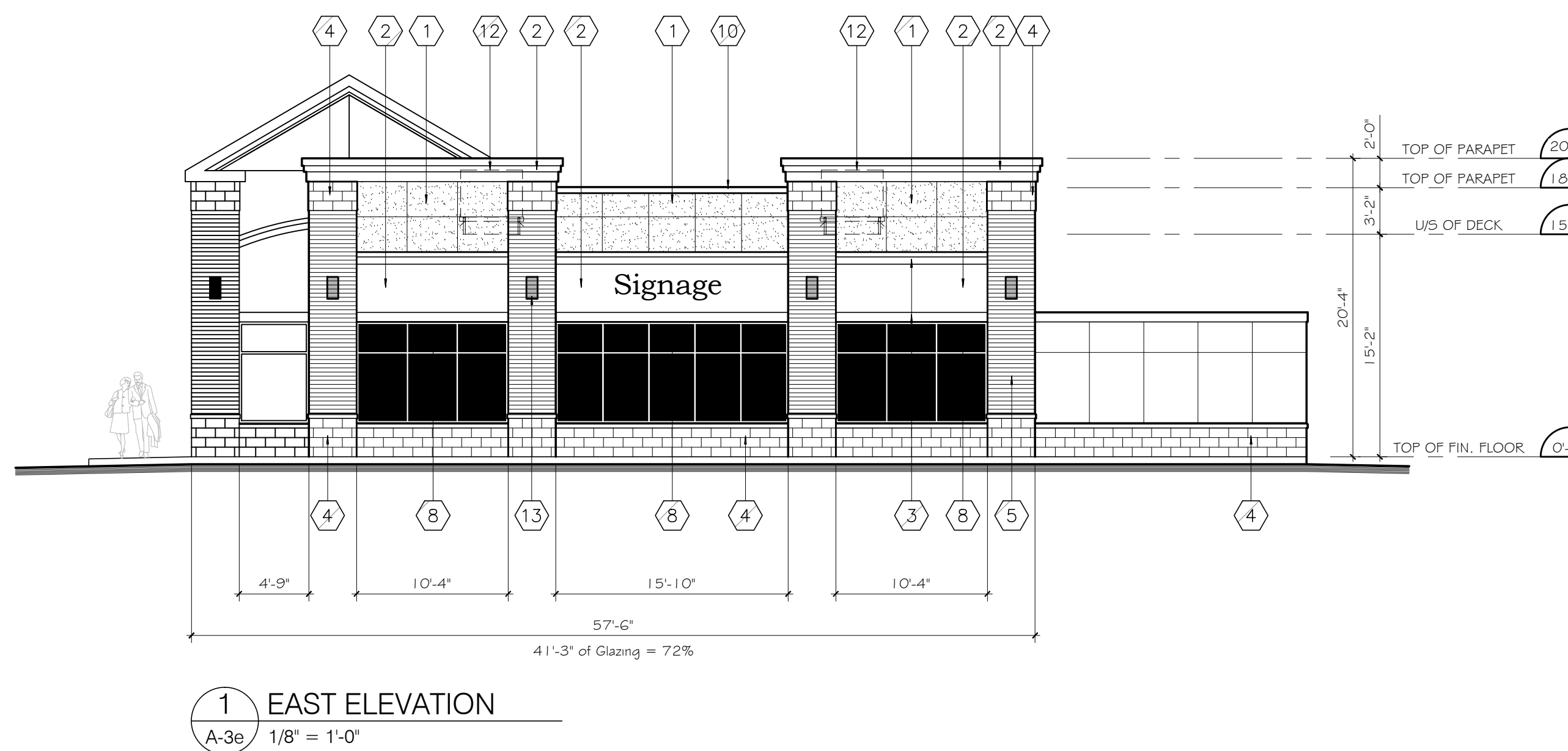
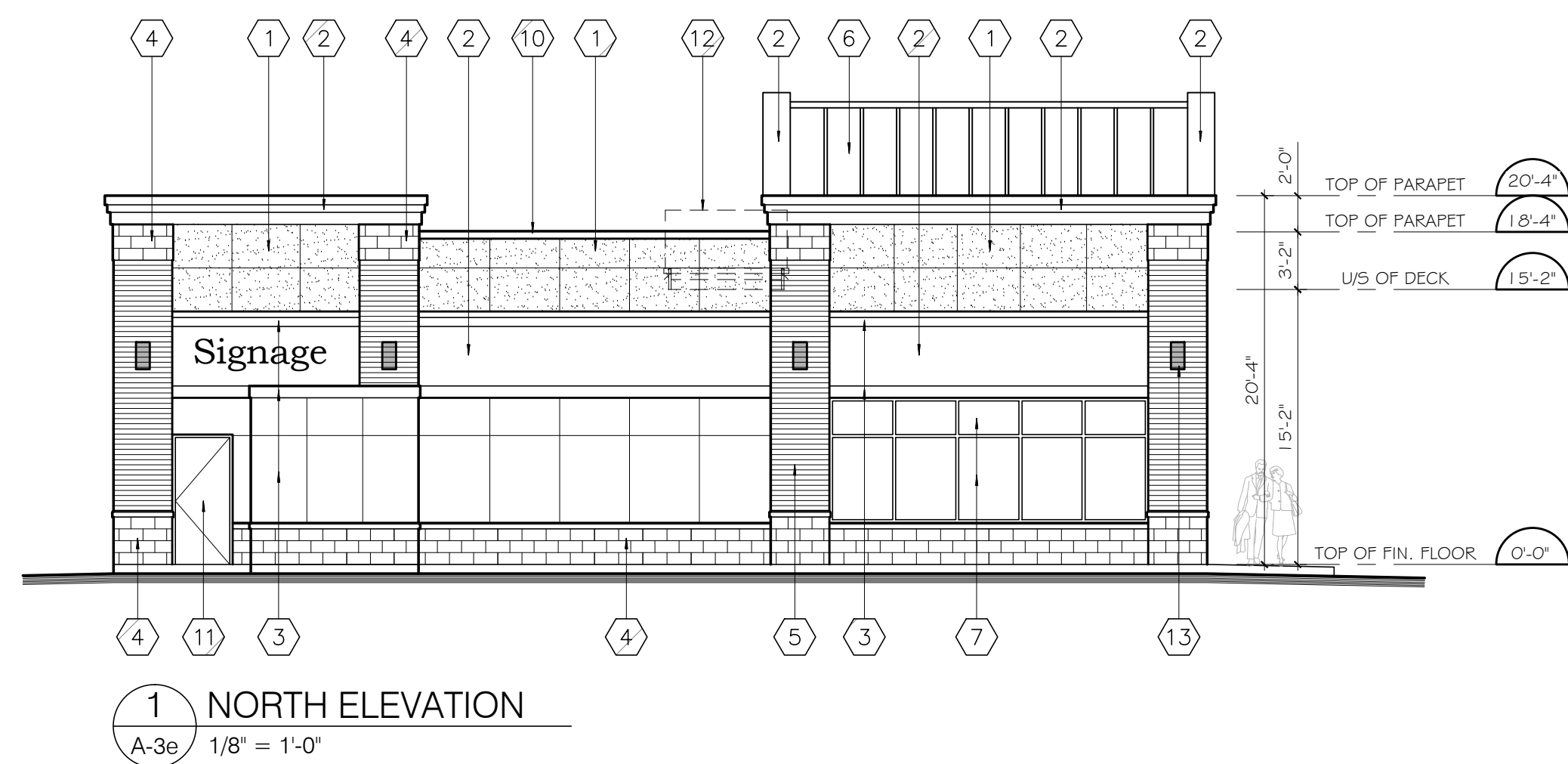


### MATERIAL SPECIFICATION

- ① UPPER WALL PANELS  
DUREX EXTERIOR INSULATION AND FINISH SYSTEM (EIFS)  
FINISH: MARBLE COAT 1.5  
GREY COLOUR: 1018-2M 'RIVER SAND'
- ② SIGN BAND, CORNICE & ROOF FASCIA  
DUREX EXTERIOR INSULATION AND FINISH SYSTEM (EIFS)  
FINISH: MARBLE COAT 1.5  
LIGHT COLOUR: 1005-1L 'ALMOND BISQUE'
- ③ LOWER WALL PANELS & ACCENT TRIM  
DUREX EXTERIOR INSULATION AND FINISH SYSTEM (EIFS)  
FINISH: MARBLE COAT 1.5  
MEDIUM COLOUR: 1005-2M 'CREME BRULE'
- ④ STONE BASE & COLUMN CAPITAL  
BRAMPTON BRICK 'STONEWORKS'  
'FINESSE SERIES', COLOUR: 'MINERAL GREY'  
FINISH: 'QUARTZ'
- ⑤ FACE BRICK  
BRAMPTON BRICK  
COLOUR: 'MADISON COUNTY' DARK BROWN  
SIZE: PREMIER PLUS
- ⑥ METAL ROOFING  
AGWAY METALS STANDING SEAM ROOFING  
PROFILE: AR25, 90° SEAMING 'T' STYLE  
PANEL WIDTH: 24"  
COLOUR: AGWAY METALS QC 7500 'SILVER'
- ⑦ STOREFRONT GLAZING  
THERMAL GLAZING UNITS IN CLEAR ANODIZED ALUMINUM FRAMES
- ⑧ SPANDREL GLAZING  
THERMAL GLAZING UNITS IN CLEAR ANODIZED ALUMINUM FRAMES C/W SPANDREL COATING
- ⑨ GLAZED DOORS  
TEMPERED GLAZING UNITS IN CLEAR ANODIZED ALUMINUM DOOR FRAMES C/W H/C OPERATOR
- ⑩ PREFINISHED METAL CAP FLASHING  
COLOUR: AGWAY METALS QC 18326 'COFFEE BROWN'
- ⑪ HOLLOW METAL DOORS & FRAMES  
COLOUR: BROWN TO MATCH 'COFFEE BROWN'
- ⑫ ROOFTOP MECHANICAL UNITS
- ⑬ DECORATIVE LIGHTING  
WALL SCONCE ACCENT DOWNLIGHTING



DATE	REV.	DESCRIPTION	DRN BY
02/27/15	4	ISSUED FOR SPA	
02/24/15	3	General Revisions	G.B.
08/26/10	2	Revised as per City comments	G.B.
07/15/10	1	Revised as per City comments	G.B.

REVISION RECORD	
SEAL:	NORTH ARROW



**RAI Architect Inc.**  
841 Brock Road  
Pickering, Ontario  
L1W 3J2  
tel: 905.492.8500 fax: 905.492.3650  
e-mail: rai@raiaarchitect.com

CONTRACTOR MUST CHECK AND VERIFY ALL DIMENSIONS AND BE RESPONSIBLE FOR SAME REPORTING ANY DISCREPANCIES BEFORE COMMENCING WORK.  
LATEST APPROVED DRAWING ONLY TO BE USED FOR CONSTRUCTION. PRINTS ARE NOT TO BE SCALED.



**Kitchener**  
100 Conestoga College Blvd, Unit 1116  
Kitchener, Ontario N2P 2N6  
(519) 896-1010 ext.100  
info@greystoneinc.ca  
www.greystoneinc.ca

**Toronto**  
2999 Lakeshore Blvd West  
Toronto, Ontario M8V 1J8  
(416) 901-6446



PROJECT STITT'S CORNERS  
6303 Hazeldean Road  
STITTVILLE, ONTARIO

DRAWING TITLE	DRAWING No.
BUILDING 'E' EXTERIOR ELEVATIONS	A-3e
SCALE 1/8" = 1'-0"	JOB No. 18-15
FILE NAME 18-15 A3e	PLOT DATE 02/24/2015