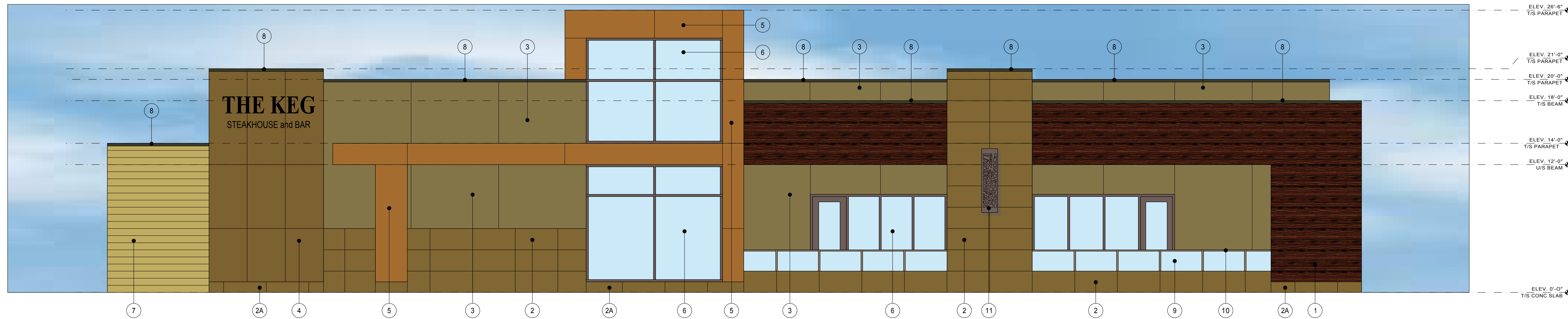


MATERIALS LEGEND

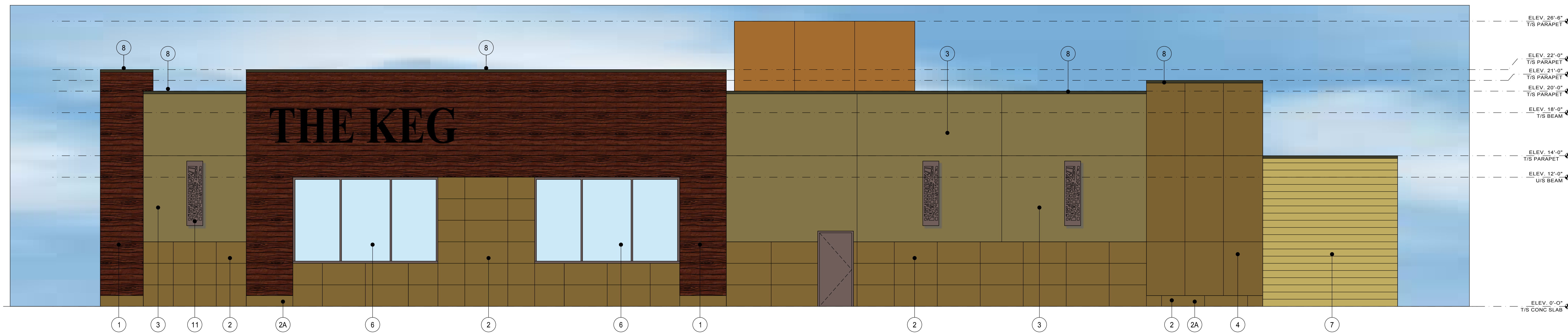
- 1 LONGBOARD SIDING - 6" WIDE PLANKS, COLOUR: DARK NATIONAL WALNUT 1806/02-733
 - 2 PORCELAIN TILE - CONCRETE PRODUCT SERIES 24"x48", COLOUR: EARTH CPRPE2448, LAPPATO FINISH
 - 2A PORCELAIN TILE - CONCRETE PRODUCT SERIES 12"x48" (CUT FROM 24"x48"), COLOUR: EARTH CPRPE2448, LAPPATO FINISH
 - 3 ACRYLIC STUCCO TO MATCH BENJAMIN MOORE HC-76 DAVENPORT TAN
 - 4 ACRYLIC STUCCO TO MATCH BENJAMIN MOORE HC-74 VALLEY FORGE BROWN
 - 5 ALUCOBOND PANEL SYSTEM TO MATCH LONGBOARD COLOUR: AZURITE COPPER YW210Q
 - 6 SOLARBAN 80 SOLAR CONTROL LOW-E GLASS WITH ANODIZED #40 DARK BRONZE FRAMES WINDOWS & DOORS
 - 7 EXPOSED CONCRETE BLOCK RICHVALE FACE CAMBRIDGE SERIES STIPPLED FACE CONCRETE YORK, SIZE STANDARD, COLOUR: EXECUTIVE BROWN WITH RAKED MOTOR JOINTS, COLOUR: Q-SERIES #BO-5148 COFFEE
 - 8 PREFINISHED METAL FLASHING COLOUR TO MATCH BENJAMIN MOORE #2108-30 BROWN HORSE
 - 9 CLEAR GLASS SCREEN AND FRAMED GATE, GLASS CLIPS AND GATE FRAMES TO MATCH BENJAMIN MOORE #2108-30 BROWN HORSE
 - 10 STEEL HANDRAIL - POWDER COATED TO MATCH BENJAMIN MOORE #2108-30 BROWN HORSE
 - 11 METAL LIGHT FIXTURE C/W CNC CUT DESIGN PAINTED TO MATCH BENJAMIN MOORE #2108-30 BROWN HORSE
- ALL STEEL DOORS, FRAMES AND GARBAGE STEEL FRAMING TO BE PAINTED TO MATCH BENJAMIN MOORE #2108-30 BROWN HORSE



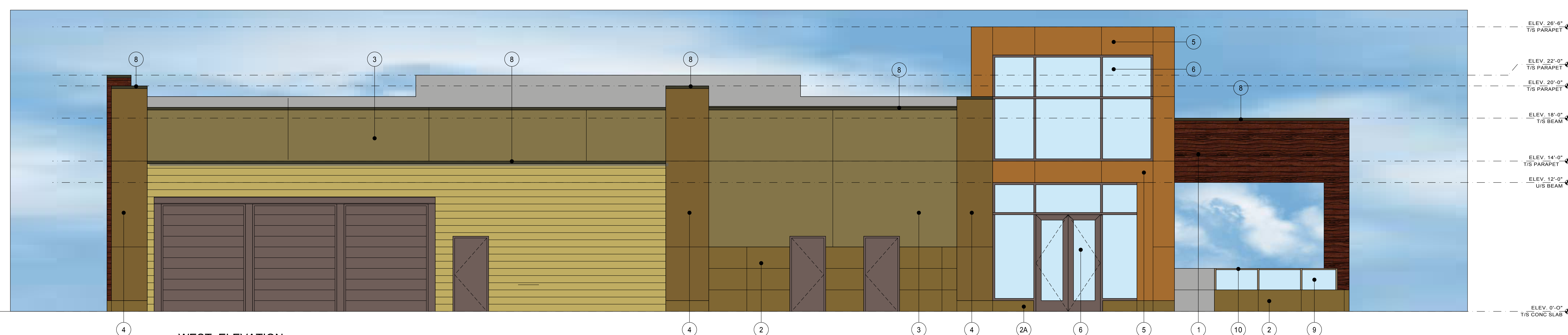
1 SOUTH ELEVATION
SCALE: 1/4"=1'-0"



2 EAST ELEVATION
SCALE: 1/4"=1'-0"



3 NORTH ELEVATION
SCALE: 1/4"=1'-0"



4 WEST ELEVATION
SCALE: 1/4"=1'-0"

DRAWING NOTES

ELEVATION DESIGNATIONS ARE BASED ON PLAN NORTH AS INDICATED ON THE SITE PLAN DRAWINGS.

No	Date	Description	By
3	10 DEC/14	ISSUED FOR REVIEW	BA
2	09 DEC/14	ISSUED FOR REVIEW	BA
1	18 MAR/13	ISSUED FOR REVIEW	BA

REVISIONS	
	This drawing is not to be used for construction until signed by the Architect.
Date	MARCH 2013
Drawn	BA
Checked	
Approved	
CAD Version	AUTOCAD 2013

These drawings shall not be scaled. The Contractor shall verify all dimensions, materials, and levels prior to beginning the Work. All errors and omissions to be reported immediately to the Architect. Variations and modifications to work shown on this drawing shall not be carried out without the written consent of the Architect. This drawing is the exclusive property of the Architect and shall not be reproduced without the Architect's permission.

Brian Awde Architect
628 Cummer Avenue North York
Ontario M2K 2N8
Tel: (416) 226-5183 Fax: (416) 226-3266
e-mail: brianawde@sympatico.ca

Project
KEG RESTAURANT
HUNTMAR ROAD
KANATA, ONTARIO

Drawing Name:
PRELIMINARY ELEVATIONS

Scale	Revision No
1/4" = 1'-0"	
Project No	Drawing No
11.04	SK-1